

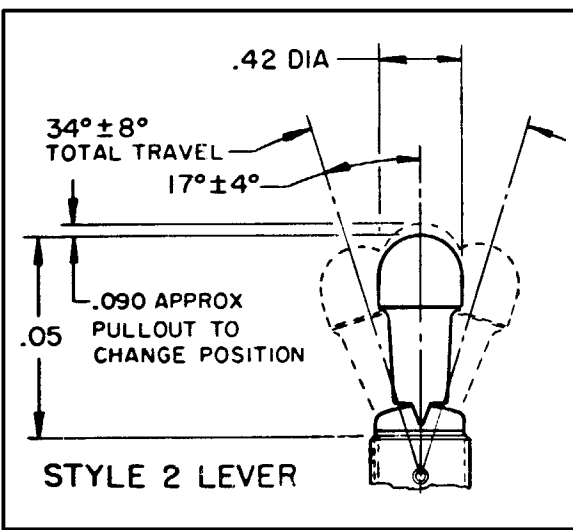
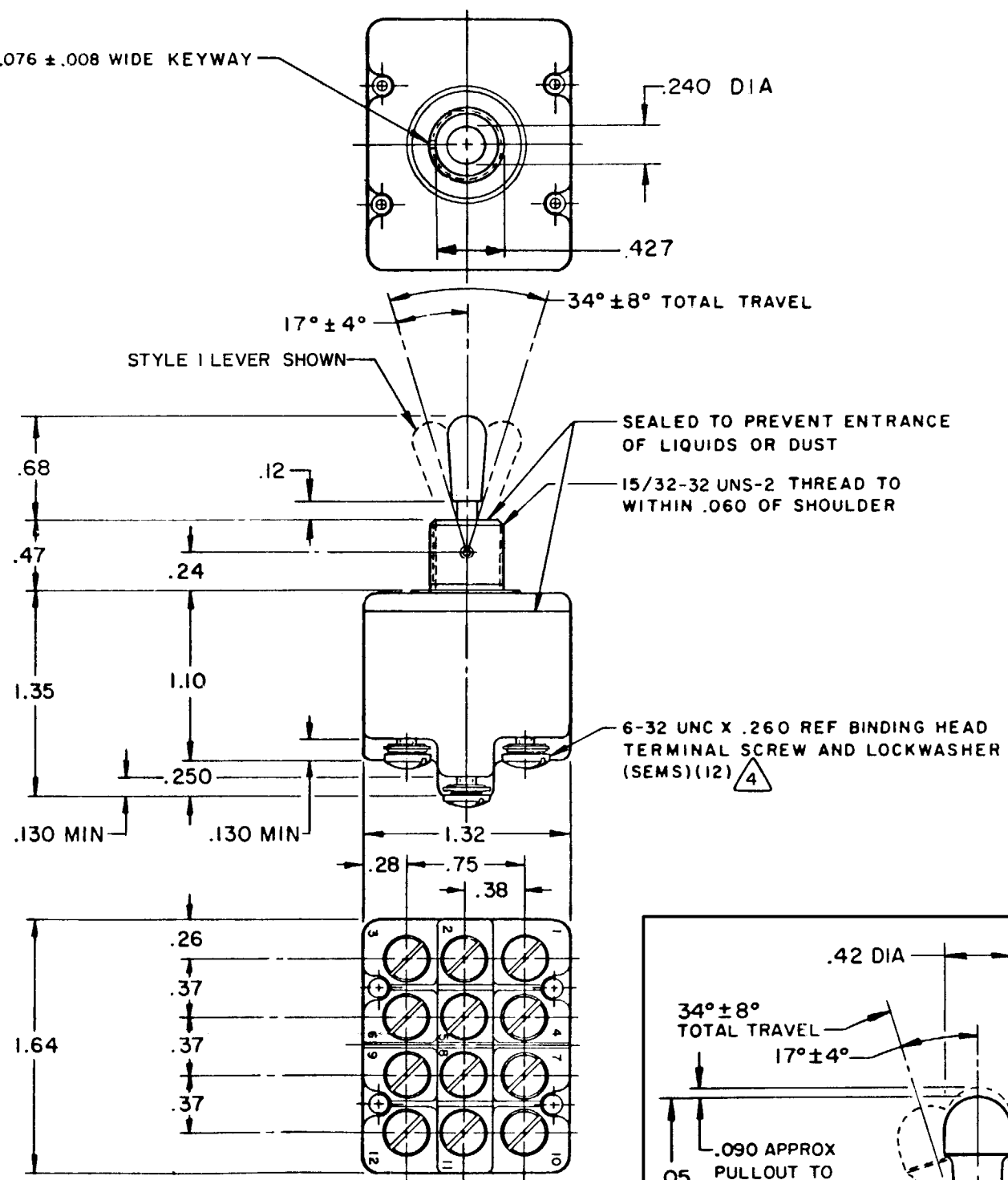
MICRO SWITCH
FREEPORT ILLINOIS U S A
A DIVISION OF HONEYWELL
FED. MFG. CODE 91929

SWITCH - BASIC

CATALOG LISTING
4 TL1-10 SERIES
CHART 1

THIS DRAWING COVERS A PROPRIETARY ITEM AND IS THE PROPERTY OF MICRO SWITCH, A DIVISION OF MINNEAPOLIS-HONEYWELL REGULATOR CO. THIS DRAWING IS NOT TO BE COPIED OR USED WITHOUT THE APPROVAL OF MICRO SWITCH.

CAT. LIST.	AVAILABLE LOCKING COMBINATIONS FOR CONFIGURATION SEE LETTERED DETAILS	STYLE NO.	MILITARY RATING (AMPS)										MS NUMBER
			RESISTIVE LOAD					LAMP LOAD		INDUCTIVE LOAD		CONTIN- UOUS	
			DC VOLTS		ACVOLTS			28 VDC		125 VAC			
4TLI-10	NONE	1	28	125	250	125	250	28 VDC	125 VAC	28 VDC	125 VAC		
4TLI-10/6	A,B,E,L,M,P,D,F,G,H,J,K,N	2	20	.75	.5	15	6	7	4	12	15		



L191 15A 125, 250, 277 VAC
1/2HP 125 VAC
1HP 250, 277 VAC
5A 125 VAC "L"

CE
UL

"A" 3 LOCKED IN THREE POSITIONS	"B" 3 LOCKED IN CENTER AND EXTREME POSITION (KEYWAY SIDE)	"D" 3 LOCKED OUT OF CENTER POSITION	"E" 3 LOCKED IN CENTER POSITION	"F" 3 LOCKED IN EXTREME POSITION (OPPOSITE KEYWAY)	"G" 3 LOCKED IN EXTREME POSITION (KEYWAY SIDE)
"H" 3 LOCKED OUT OF CENTER AND EXTREME POSITION (KEYWAY SIDE)	"J" 3 LOCKED OUT OF CENTER AND EXTREME POSITION (OPPOSITE KEYWAY)	"K" 3 LOCKED IN CENTER AND EXTREME POSITION (OPPOSITE KEYWAY)	"L" 3 LOCKED OUT OF EXTREME POSITION (KEYWAY SIDE)	"M" 3 LOCKED OUT OF AND INTO EXTREME POSITION (OPPOSITE KEYWAY)	"N" 3 LOCKED OUT OF EXTREME POSITION (OPPOSITE KEYWAY)
"P" 3 LOCKED OUT OF AND INTO EXTREME POSITION (KEYWAY SIDE)	DIMENSIONS TO FIT KEYWAY IN BUSHING LOCKWASHER: .47 DIA, .018 REF, .60 DIA LOCKING RING: .05, .110, .392, .040, .72 DIA HEX NUT: 15/32-32 UNS-2 THREAD, .078, .56				

LEVER ON KEYWAY SIDE	LEVER IN CENTER	LEVER OPPOSITE KEYWAY
 3 2 1 6 5 4 9 8 7 12 11 10 MAINTAINED POSITION	 3 2 1 6 5 4 9 8 7 12 11 10 MAINTAINED POSITION	 3 2 1 6 5 4 9 8 7 12 11 10 MAINTAINED POSITION

NOTES

- SWITCHES ARE CAPABLE OF WITHSTANDING A TEMPERATURE OF 160°F CONTINUOUSLY AT FULL RATED LOAD
- CIRCUIT DESIGNATION AND MICRO SWITCH CATALOG LISTING MARKED ON SIDE OF SWITCH
- KEYWAY SHOWN ON LEFT SIDE
- FURNISHED UNASSEMBLED
- FOR TERMINAL COVER SEE MICRO SWITCH CATALOG LISTING 5PA9
- SUFFIX LETTER MUST BE ADDED FOR DESIRED TYPE TOGGLE LOCKING. SEE CHART FOR AVAILABLE LOCKING COMBINATIONS