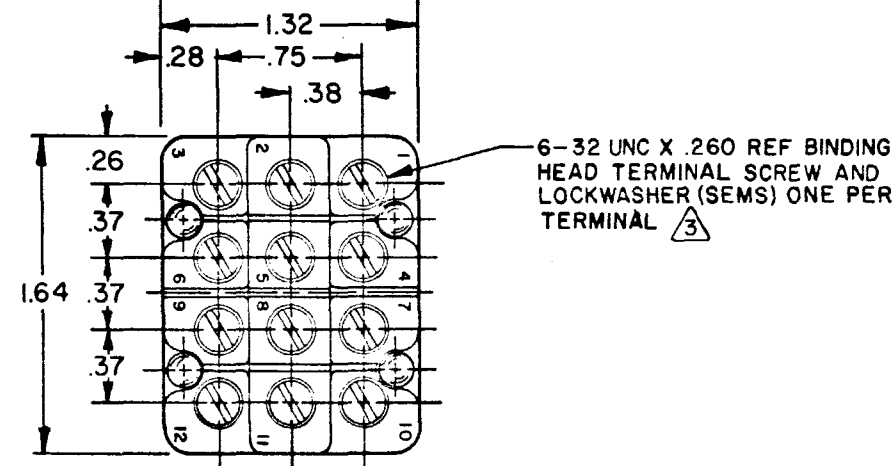
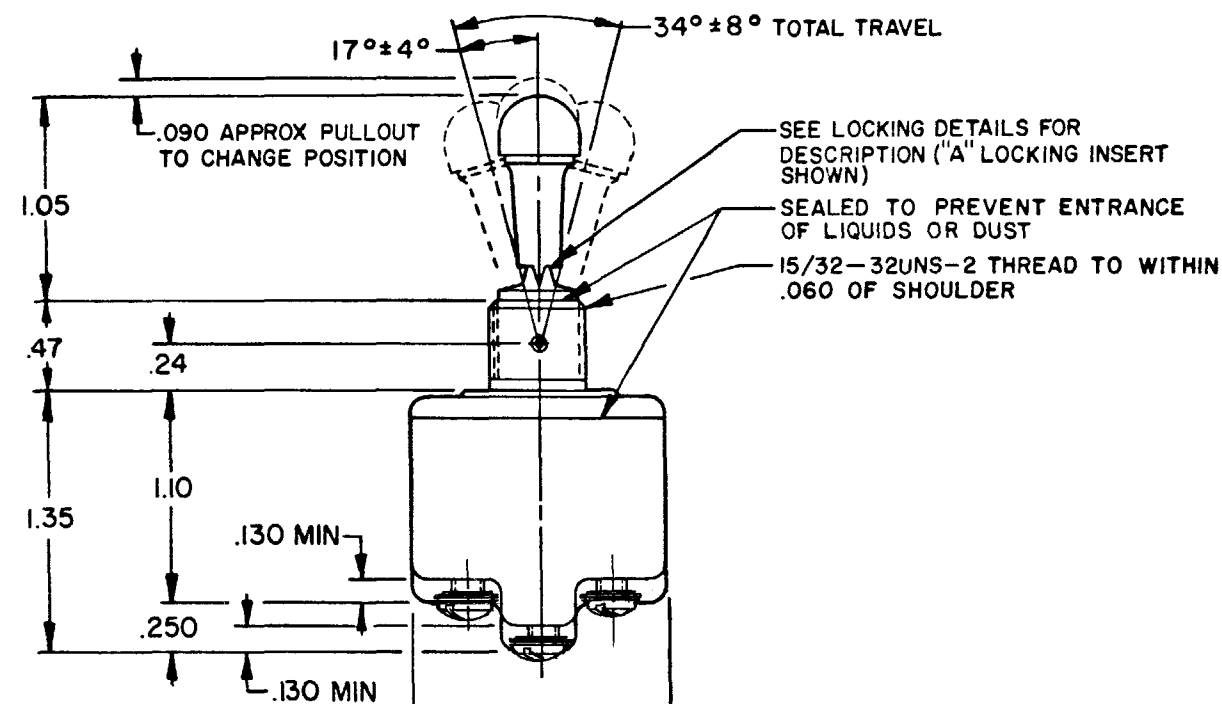
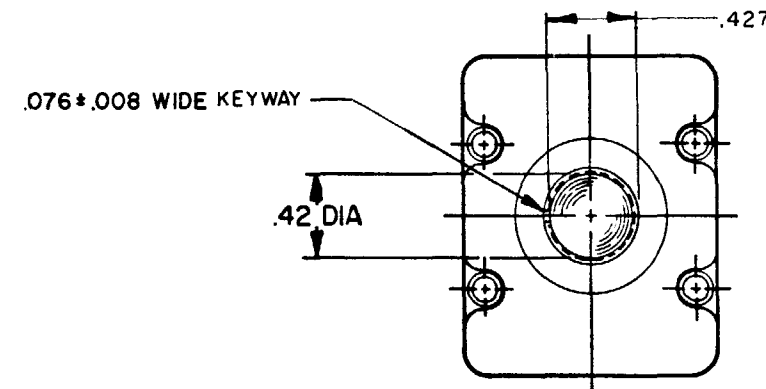


FREEPORT, ILLINOIS, U.S.A
A DIVISION OF HONEYWELL
FED. MFG. CODE 91929

CATALOG LISTING
4TL5 SERIES
CHART 2

THIS DRAWING COVERS A PROPRIETARY ITEM AND IS THE PROPERTY OF MICRO SWITCH, A DIVISION OF HONEYWELL. THIS DRAWING IS NOT TO BE COPIED OR USED WITHOUT THE APPROVAL OF MICRO SWITCH.

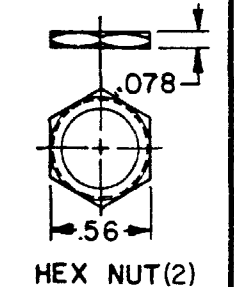
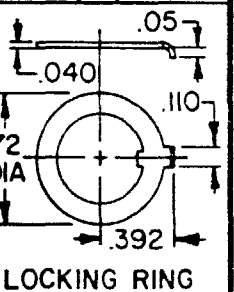
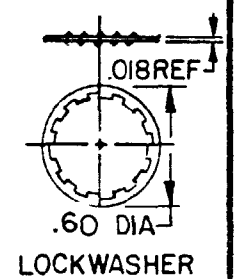
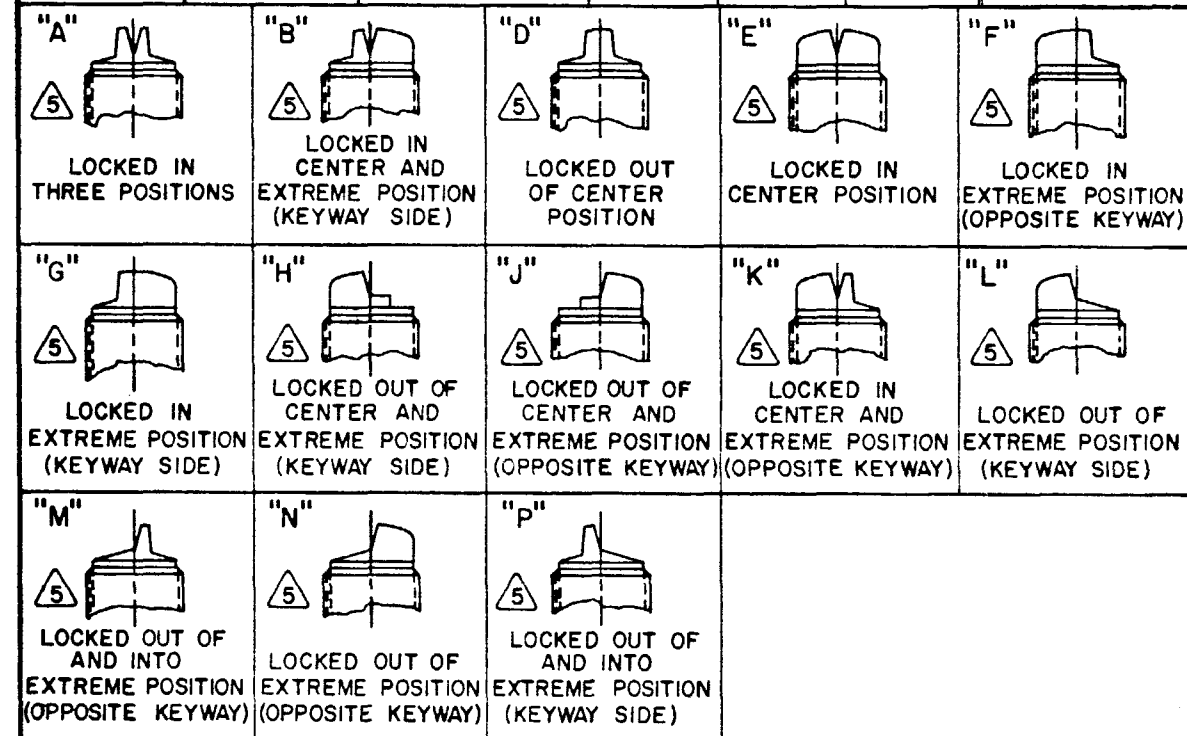


SCALE FULL		
DO NOT SCALE PRINT		
UNLESS OTHERWISE NOTED		
DIMENSIONS ARE IN INCHES		
TOLERANCES ARE:		
ONE PLACE	(.0)	± .030
TWO PLACE	(.00)	± .015
THREE PLACE	(.000)	± .005
ANGLES		
WEIGHT		

CATALOG LISTING	AVAILABLE LOCKING COMBINATIONS FOR CONFIGURATION SEE LETTERED DETAILS	CIRCUIT MADE WITH TOGGLE LEVER IN		
		KEYWAY SIDE (1-2, 4-5 7-8, 10-11)	CENTER (1-2, 4-5 7-8, 10-11)	OPPOSITE KEYWAY (2-3, 5-6 8-9, 11-12)
6 4TL5 - 1	A,B,D,E,F,G,H,J,K,L,M,NP	ON	OFF	ON
4TL5 - 2	D, F, G	OFF	NONE	ON
4TL5 - 3	D, F, G	ON	NONE	ON
4TL5 - 2I	E, F, K, M	NONE	OFF	ON
4TL5 - 3I	E, F, K, M	NONE	ON	ON
4TL5 - 4	F	MOM OFF	NONE	ON
4TL5 - 5	E, F, K, L, M, N	MOM ON	OFF	ON
4TL5 - 6	F	MOM ON	NONE	OFF
4TL5 - 7	E, L, N	MOM ON	OFF	MOM ON
4TL5 - 8	F	MOM ON	NONE	ON
4TL5 - 5I	E	NONE	ON	MOM ON
4TL5 - 6I	E	MOM ON	OFF	NONE

L191 15A 125, 250, 277 VAC
1/2HP 125 VAC
1HP 250, 277 VAC
5A 125 VAC "L"

L192 10A 125, 250, 277 VAC
1/4HP 125 VAC,
1/2HP 250, 277 VAC
3A 125 VAC "L"



- 1 - SWITCHES ARE CAPABLE OF WITHSTANDING A TEMPERATURE OF 160°F CONTINUOUSLY AT FULL RATED LOAD
- 2 - CIRCUIT DESIGNATION AND MICRO SWITCH CATALOG LISTING MARKED ON SIDE OF SWITCH
- 3 - FURNISHED UNASSEMBLED
- 4 - FOR TERMINAL COVER SEE MICRO SWITCH CATALOG LISTING 5PA9
- 5 - KEYWAY SHOWN ON LEFT SIDE
- 6 - SUFFIX LETTER MUST BE ADDED FOR DESIRED TYPE OF TOGGLE LOCKING. SEE CHART FOR AVAILABLE LOCKING COMBINATIONS
- 7 - APPLIES ONLY TO "ON" AND "MOMENTARY ON" POSITIONS
- 8 - BRIGHT FINISH TOGGLE LEVER AND MOUNTING NUTS

ISSUE	M	DRAWING	NUMBER	4TL5 SERIES CHART 2	PAGE 1 OF 1	RELEASE NO.	PR	67	50	REPLACES

REVISIONS	
A	CO-81150
J A K 19 JUN 95	
B	CO-94444
J J A 23 NOV 99	

FORMTEK
DRAWN