

REVISIONS				
REV.	ECO. NO	DESCRIPTION	DATE	BY
A	1516	INITIAL RELEASE	11/12/2007	JH
B	1810	ADD HB TERMINATION, UPDATE LAYOUT	9/25/2008	ASK
C	2130	UPDATE WITHSTADING VLOTAGE, PCB & DAUGHTER CARD LAYOUTS, CORRECT S621, BOARD LOCK 3.200" (WAS 3.191"), .150" (WAS .140"), REMOVE E & H MTL	4/15/2010	JH

PART NUMBER CODING

-- B60D -- -S621

MATERIAL (INSULATOR/CONTACT)

R = BLACK, PPS/PHOSPHOR BRONZE

OPERATING TEMP: -65°C TO +125°C

PROCESSING TEMP: 260°C FOR 120 SECS MAX

G = BLACK, PA9T/PHOSPHOR BRONZE

OPERATING TEMP: -65°C TO +125°C

PROCESSING TEMP: 260°C FOR 120 SECS MAX

A = BLACK, PPS/BERYLLIUM COPPER

OPERATING TEMP: -65°C TO +150°C

PROCESSING TEMP: 260°C FOR 120 SECS MAX

J = BLACK, PA9T/BERYLLIUM COPPER

OPERATING TEMP: -65°C TO +150°C

PROCESSING TEMP: 260°C FOR 120 SECS MAX

(CONSULT FACTORY FOR OTHER MATERIALS)

MOUNTING STYLE

S = ø.125 SIDE MOUNTING (PAGE 2)

D = FLUSH MOUNTING (PAGE 2)

N = NO MOUNTING EARS (PAGE 2)

T = #4-40 THREADED INSERTS (PAGE 2)

R = METAL BOARD LOCK (PAGE 2)

TERMINATION TYPE

HA = .100" [2.54 mm] STAGGERED DIP SOLDER, .050" CENTERS

HB = .170" [4.32 mm] STAGGERED DIP SOLDER, .050" CENTERS

PLATING

ALL PLATINGS ARE LEAD FREE AND HAVE .000050" NICKEL UNDERPLATE

CONTACT SURFACE

B = .000010" GOLD

C = .000030" GOLD

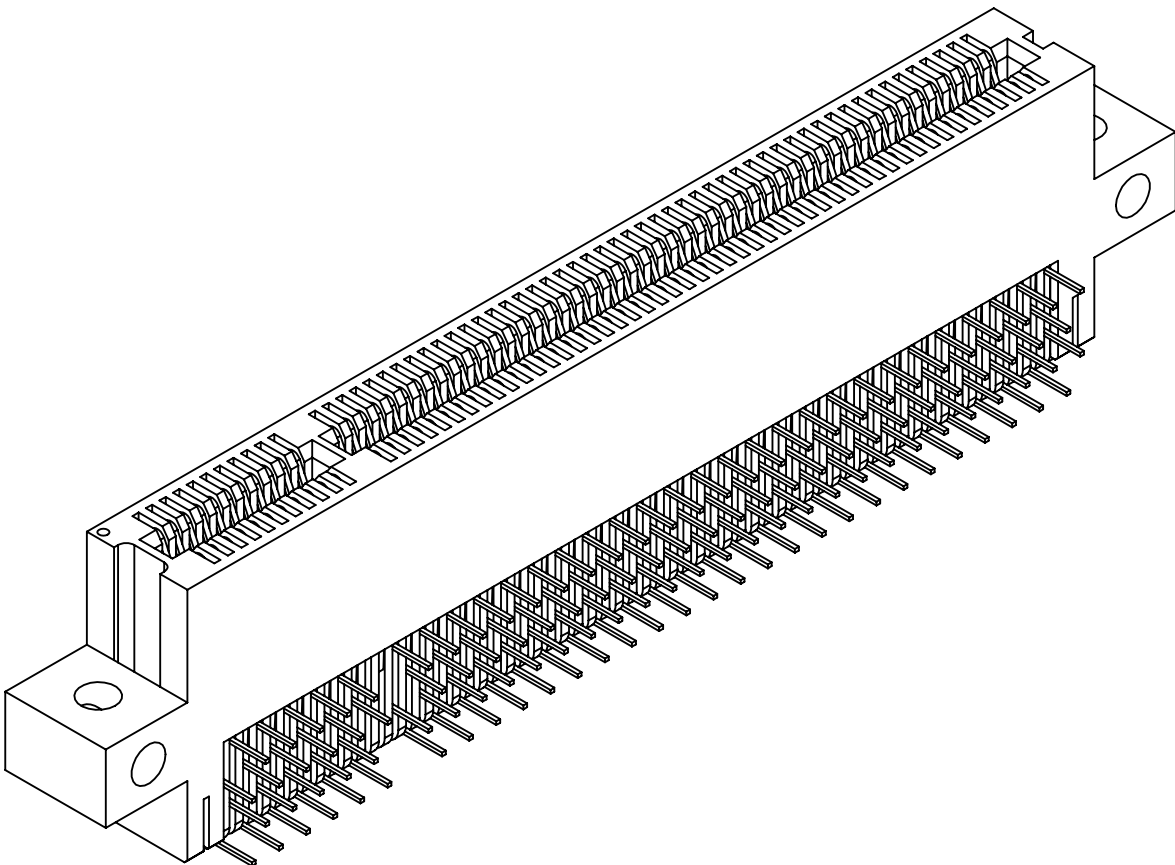
TERMINATION

.000100" PURE TIN, MATTE

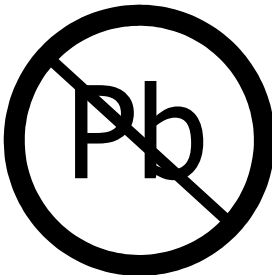
.000100" PURE TIN, MATTE

NOTES:


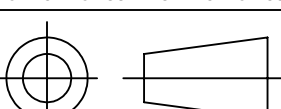
- MATERIALS:
 - INSULATOR: SEE PART NUMBER CODING.
 - CONTACT: SEE PART NUMBER CODING.
 - PLATING: SEE PART NUMBER CODING.
- THERMAL:
 - OPERATING TEMPERATURE: SEE PART NUMBER CODING.
 - PROCESSING TEMP: SEE PART NUMBER CODING.
 - UL FLAMMABILITY RATING: 94V-0.
- ELECTRICAL:
 - DIELECTRIC WITHSTANDING VOLTAGE: MATED CONNECTOR MUST EXHIBIT NO EVIDENCE OF BREAKDOWN, FLASHOVER, OR DETERIORATION FROM AN APPLIED VOLTAGE OF 300 VAC (VALUE HAS BEEN DE-RATED), RMS 60 Hz WHEN TESTED IN ACCORDANCE WITH MIL-STD-1344, METHOD 3001. DURATION OF APPLICATION SHALL BE 5 SECS MIN.
 - INSULATION RESISTANCE (IR): 5,000 MEGOHMS @ 500 VOLTS ±10% WHEN TESTED IN ACCORDANCE WITH MIL-STD-1344, METHOD 3003 @ 25°C.
 - CONTACT RESISTANCE: 30 MILLIOHM MAX .
 - CURRENT RATING: 1 AMP PER CONTACT.
- MECHANICAL:
 - CONNECTOR IDENTIFICATION: THE PART SHALL BE MARKED WITH A LOT CODE AS A MINIMUM. IF SPACE PERMITS ALSO MARK PART WITH SULLINS WEBSITE, AND PART NUMBER.
 - DURABILITY: 500 CYCLES MINIMUM.
 - BOARD THICKNESS ACCOMMODATED: .062 ±.008"
 - BOARD INSERTION FORCE: 16 OZ MAX PER CONTACT PAIR WHEN USING A .062" TEST BLADE. INTERNAL INSPECTION TO BE PER SULLIN'S WORK INSTRUCTION W17.3-01.
 - BOARD WITHDRAWAL FORCE: 1 OUNCE MINIMUM PER CONTACT PAIR USING .062" PCB.
- MODIFICATION:
 - CARDSLOT BARRIERS WITHOUT GUIDEPOSTS, FOR PCI 32 BIT 5 VOLT 60 (11/49) POSITION CONNECTOR.

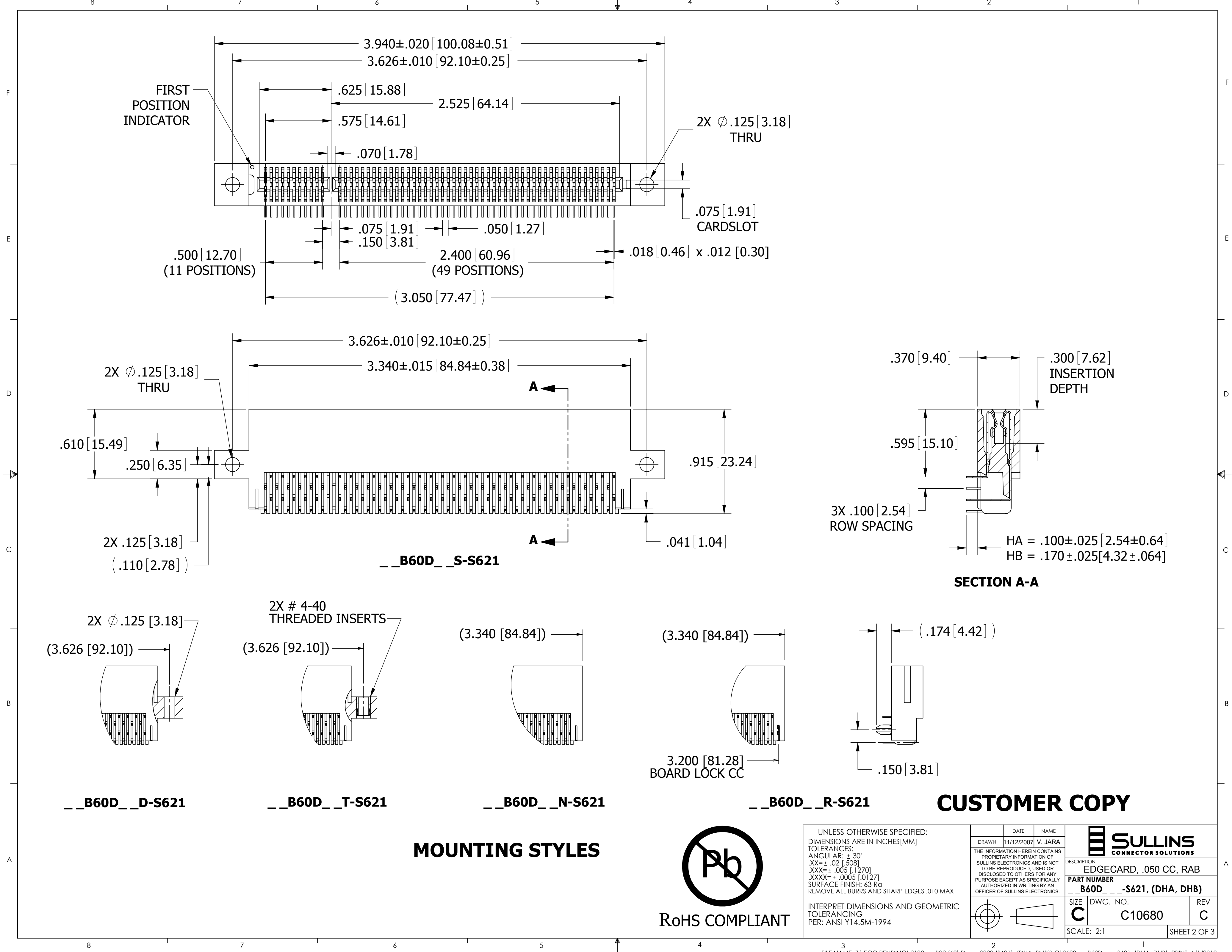


CUSTOMER COPY



RoHS COMPLIANT

UNLESS OTHERWISE SPECIFIED: DIMENSIONS ARE IN INCHES[MM] TOLERANCES: ANGULAR: ± 30' .XX=± .02 [.508] .XXX=± .005 [.1270] .XXXX=± .0005 [.0127] SURFACE FINISH: 63 Ra REMOVE ALL BURRS AND SHARP EDGES .010 MAX INTERPRET DIMENSIONS AND GEOMETRIC TOLERANCING PER: ANSI Y14.5M-1994		DATE 11/12/2007	NAME V. JARA	 SULLINS CONNECTOR SOLUTIONS	
	DRAWN				
	THE INFORMATION HEREIN CONTAINS PROPRIETARY INFORMATION OF SULLINS ELECTRONICS AND IS NOT TO BE REPRODUCED, USED OR DISCLOSED TO OTHERS FOR ANY PURPOSE EXCEPT AS SPECIFICALLY AUTHORIZED IN WRITING BY AN OFFICER OF SULLINS ELECTRONICS.				DESCRIPTION EDGE CARD, .050 CC, RAB
					PART NUMBER __ B60D __ -S621, (DHA, DHB)
	SIZE C	DWG. NO. C10680		REV C	
SCALE: 2:1				SHEET 1 OF 3	



MOUNTING STYLES



UNLESS OTHERWISE SPECIFIED: DIMENSIONS ARE IN INCHES[MM] TOLERANCES: ANGULAR: ± 30' .XX=± .02 [.508] .XXX=± .005 [.1270] .XXXX=± .0005 [.0127] SURFACE FINISH: 63 Rc REMOVE ALL BURRS AND SHARP EDGES .010 MAX			DRAWN 11/12/2007 V. JARA	DATE 11/12/2007 V. JARA	NAME V. JARA
THE INFORMATION HEREIN CONTAINS PROPRIETARY INFORMATION OF SULLINS ELECTRONICS AND IS NOT TO BE REPRODUCED, USED OR DISCLOSED TO OTHERS FOR ANY PURPOSE EXCEPT AS SPECIFICALLY AUTHORIZED IN WRITING BY AN OFFICER OF SULLINS ELECTRONICS.					
INTERPRET DIMENSIONS AND GEOMETRIC TOLERANCING PER: ANSI Y14.5M-1994			DESCRIPTION EDGE CARD, .050 CC, RAB PART NUMBER B60D-S621, (DHA, DHB)		
			SIZE C	DWG. NO. C10680	REV C
SCALE: 2:1			SHEET 2 OF 3		

