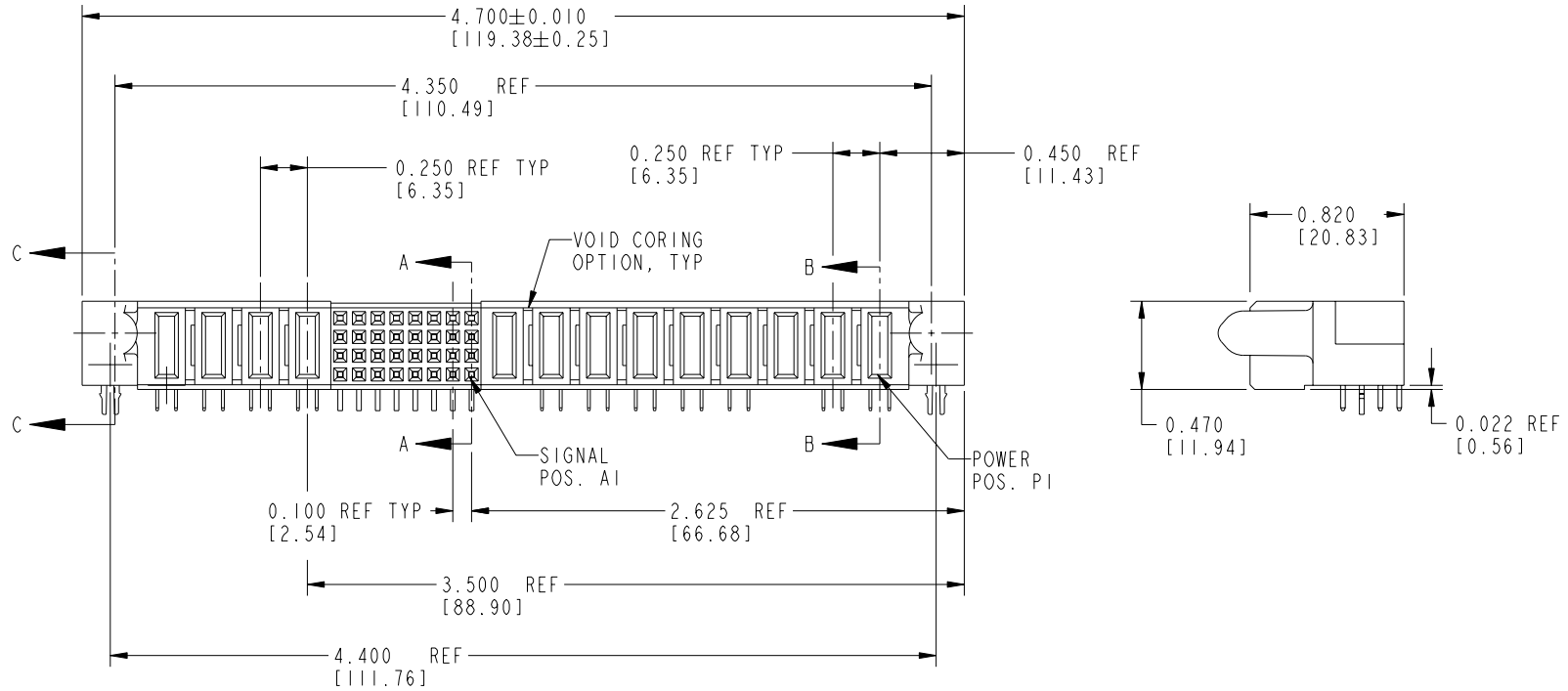


Tous droits strictement réservés. Reproduction ou communication o des tiers interdite sous quelque forme que ce soit sans autorisation écrite du propriétaire. Propriete de c FCI. Droits de reproduction FCI.

All rights strictly reserved. Reproduction or issue to third parties in any form whenever is not permitted without written authority from the proprietor. Property of FCI. Copyright FCI.



PRODUCT No.	ROWS	POWER				SIGNAL								POWER										
		E2	P13	P12	P11	P10	8	7	6	5	4	3	2	1	P9	P8	P7	P6	P5	P4	P3	P2	P1	E1
51770-002-- NOTE: (2)	D C B A	HA	PC	PC	PA	PC	H	H	H	H	H	H	H	H	H	H	H	H	H	H	H	H	H	HA
						G	G	G	G	G	G	G	G	G	G	G	G	G	G	G	G	G	G	
						F	F	F	F	F	F	F	F	F	F	F	F	F	F	F	F	F	F	
						E	E	E	E	E	E	E	E	E	E	E	E	E	E	E	E	E	E	



CODE	DIM "M" ±0.010 [0.25]		CONTACT TYPE
E	N/A	[N/A]	SIGNAL
F	N/A	[N/A]	SIGNAL
G	N/A	[N/A]	SIGNAL
H	N/A	[N/A]	SIGNAL
PA	0.042	[1.07]	POWER
PC	0.092	[2.34]	POWER
HA	N/A	[N/A]	HOLD-DOWN

mat'l code				NOTE 1		tolerances unless otherwise specified		CUSTOMER	
ltr	ecn no.	dr	date	linear	.XX ± .01/0.X ± 0.3	projection	COPY		
A	V10108	JRW	1/8/01	angles	.XXX ± .005/0.XX ± 0.13		title 9P + 32S + 4P		
B	DG05-0238	SJ	07/22/05	dr	.XXX ± .0020/.XXX ± 0.051		RIGHT ANGLE RECEPTACLE		
				engr	J. WITMER 1/9/01		product family PwrBlade		code 213
				chr	J. DODDS 10/24/00		size dwg no		sheet 1 of 4
				appd	J. DODDS 1/9/01		A 51770-002		
sheet index	revision sheet	B 1	B 2	B 3					

Pro/E

cage code 22526

PDM: Rev:B

STATUS: Released

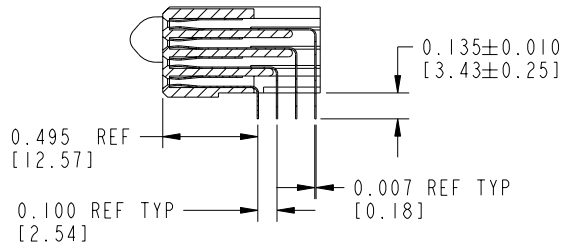
Printed: Oct 08, 2006

Tous droits strictement réservés. Reproduction ou communication a des tiers interdite sous quelque forme que ce soit sans autorisation écrite du propriétaire. Propriété de c FCI. Droits de reproduction FCI.

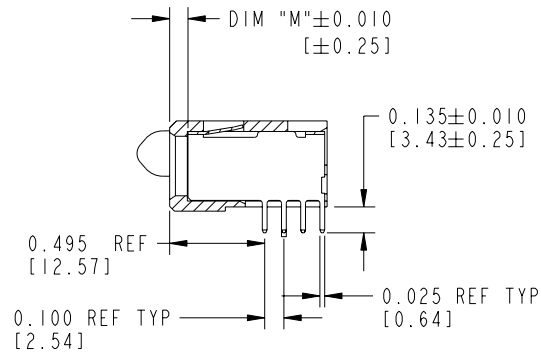
All rights strictly reserved. Reproduction or issue to third parties in any form whatever is not permitted without written authority from the proprietor. Property of FCI. Copyright FCI.

FCI

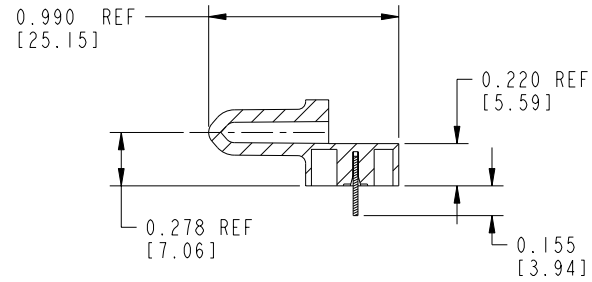
PRODUCT NUMBER
51770-002--
NOTE: ②



SECTION A-A



SECTION B-B



SECTION C-C

mat'l code		NOTE 1		tolerances unless otherwise specified		CUSTOMER		FCI www.fciconnect.com	
ltr	ecn no.	dr	date	linear	.XX±.01/0.X±0.3	COPY		title 9P + 32S + 4P	
B				linear	.XXX±.005/0.XX±0.13	projection		RIGHT ANGLE RECEPTACLE	
				angles	.XXX±.0020/.XXX±0.051	INCH/MM		product family PwrBlade code 213	
				dr	J. WITMER 1/9/01	scale 1:1		size dwg no 51770-002 sheet 2	
				enr	J. DODDS 10/24/00				
				chr	J. DODDS 1/9/01				
				appd	J. DODDS 1/9/01				
sheet index	revision sheet							cage code 22526	

Pro/E

cage code 22526

PDM: Rev:B

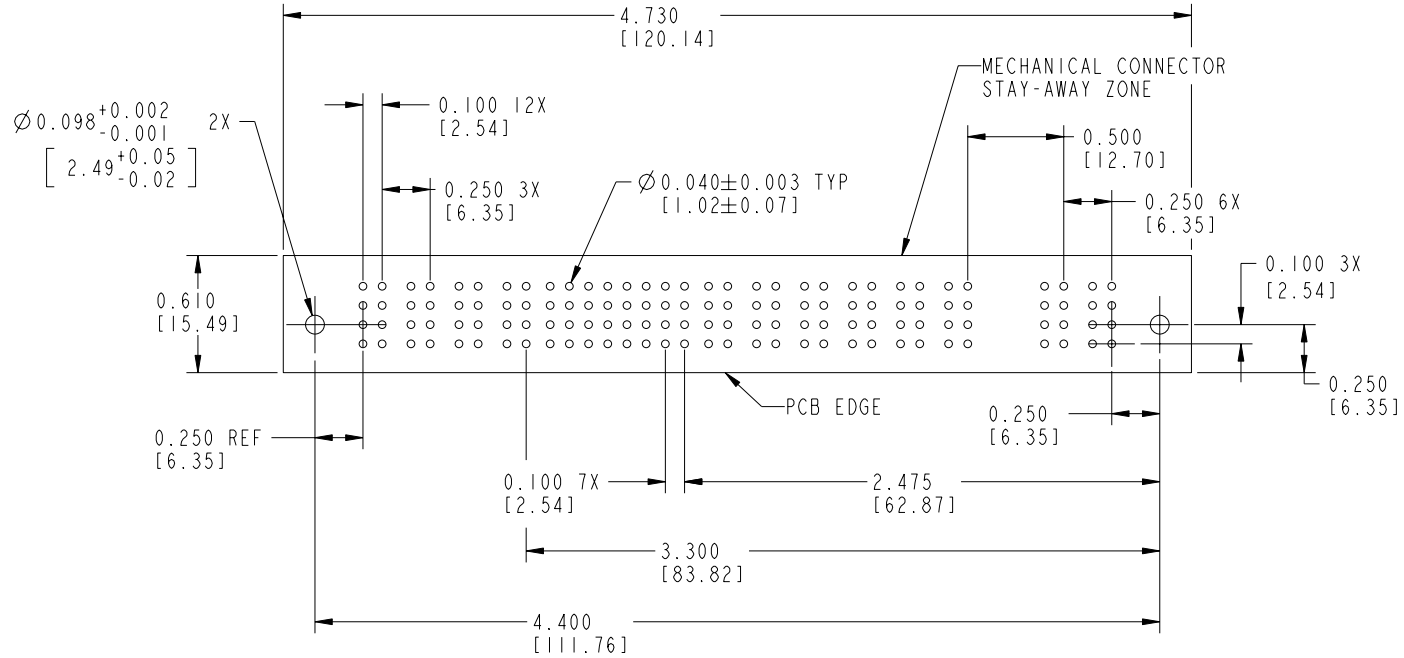
STATUS: Released

Printed: Oct 08, 2006


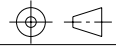
Tous droits strictement réservés. Reproduction ou communication a des tiers interdite sous quelque forme que ce soit sans autorisation écrite du propriétaire. Propriété de c FCI. Droits de reproduction FCI.

All rights strictly reserved. Reproduction or issue to third parties in any form whatever is not permitted without written authority from the proprietor. Property of FCI. Copyright FCI.

PRODUCT NUMBER
51770-002--
NOTE: (2)



RECOMMENDED PCB LAYOUT

mat'l code				tolerances unless otherwise specified		CUSTOMER		 www.fciconnect.com	
ltr	ecn no.	dr	date	linear	.XX ± .01/0.X ± 0.3	COPY		title	
B					.XXX ± .005/0.XX ± 0.13	projection		9P + 32S + 4P	
					.XXX ± .002/0.XXX ± 0.051			RIGHT ANGLE RECEPTACLE	
				angles	0 ± 2°	INCH/MM		product family	
				dr	J. WITMER 1/9/01	scale		PwrBlade	
				enr	J. DODDS 10/24/00	1:1		code	
				chr	J. DODDS 1/9/01			size	
				appd	J. DODDS 1/9/01			dwg no	
sheet index		revision sheet						A 51770-002	
								sheet 3	

cage code 22526

Pro/E

PDM: Rev:B

STATUS: Released

Printed: Oct 08, 2006

Tous droits strictement réservés. Reproduction ou communication a des tiers interdite sous quelque forme que ce soit sans autorisation écrite du propriétaire. Propriété de c FCI. Droits de reproduction FCI.



All rights strictly reserved. Reproduction or issue to third parties in any form whatever is not permitted without written authority from the proprietor. Property of FCI. Copyright FCI.

PRODUCT NUMBER
51770-002--
NOTE: (2)

CONNECTOR NOTES:

1. FOR ADDITIONAL INFORMATION, REFER TO DRAWING NUMBER 51770.

2. PLATING:

51770-002 Singal Pin:30u"/0.76um Au OVER 50u"/1.27um Ni ON THE CONTACT AREA,
AND 100u"/2.54um SnPb PLATING OVER 50u"/1.27um Ni ON THE TERMINATION SECTION.
Power Pin:30u"/0.76um Au OVER 50u"/1.27um Ni ON THE CONTACT AREA,
AND 100u"/2.54um SnPb PLATING OVER 50u"/1.27um Ni ON THE TERMINATION SECTION.

51770-002LF Singal Pin:30u"/0.76um Au OVER 50u"/1.27um Ni ON THE CONTACT AREA,
AND 78u"/2.00um Sn PLATING OVER 50u"/1.27um Ni ON THE TERMINATION SECTION.
Power Pin:30u"/0.76um Au OVER 50u"/1.27um Ni ON THE CONTACT AREA,
AND 78u"/2.00um Sn PLATING OVER 50u"/1.27um Ni ON THE TERMINATION SECTION.

PART NUMBER 51770-002LF MEETS EUROPEAN UNION DIRECTIVE AND OTHER COUNTRY REGULATIONS AS DESCRIBED IN GS-22-008.

THE HOUSING WILL WITHSTAND EXPOSURE TO 260° PEAK TEMPERATURE FOR 10 SECONDS IN A WAVE SOLDER APPLICATION WITH A CIRCUIT BOARD.

PCB NOTES:

- ALL DIMENSIONS ARE BASIC UNLESS OTHERWISE SPECIFIED.
- ALL THROUGH HOLES ARE LOCATED WITH A TRUE POSITION OF 0.004 [0.10]
- ALL HOLE DIAMETERS ARE FINISHED HOLE SIZE.
- Ø0.098 [2.49] THROUGH HOLES ARE UNPLATED
- Ø0.0453±0.00010 [1.151±0.025] DRILLED HOLES PLATED WITH 0.0003 [0.008] MIN SnPb OVER 0.001 [0.03] TO 0.003 [0.08] Cu PLATING TO ACHIEVE A Ø0.040±0.003 [1.02±0.07] HOLE.

CONFIDENTIAL

mat'l code				tolerances unless otherwise specified		CUSTOMER	FCI www.fciconnect.com				
ltr	ecn no.	dr	date	linear	.XX±.01/0.X±0.3	projection	COPY		title	9P + 32S + 4P	
B					.XXX±.005/0.XX±0.13		INCH/MM	RIGHT ANGLE RECEPTACLE		product family	PwrBlade
				angles	.XXX±.0020/.XXX±0.051	scale		product family	PwrBlade		code
				dr	0°±2°		1:1			size	
				enr	J. WITMER 1/9/01	A		51770-002			
				chr	J. DODDS 10/24/00						
				appd	J. DODDS 1/9/01						
sheet index	revision sheet										

Pro/E

cage code 22526

PDM: Rev:B

STATUS: Released

Printed: Oct 08, 2006