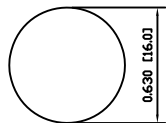
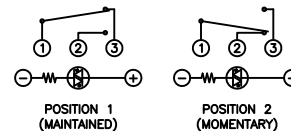


SUGGESTED PANEL CUTOUT



MAXIMUM PANEL THICKNESS: 0.551 [14.0mm]

SCHEMATIC



SPECIFICATIONS

FUNCTION:
1P2T ON-(ON)

RATING:
NOM-003-SCFI-2000 (200901C07839):
2A 48VDC [NOM]

ILLUMINATION VOLTAGE:
12V 20mA

CONTACT RESISTANCE:
Initial: 50mΩ; Max. at 1A 12VDC

INSULATION RESISTANCE:
1,000MΩ Min. at 500VDC

DIELECTRIC STRENGTH:
2,000VAC Min. for 1 Minute

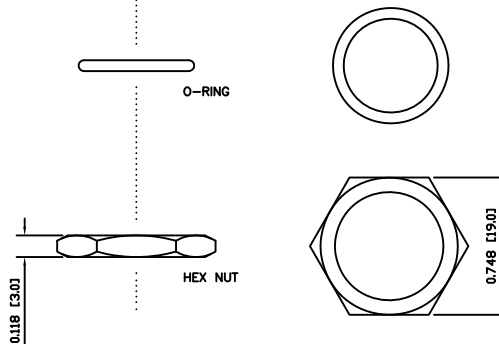
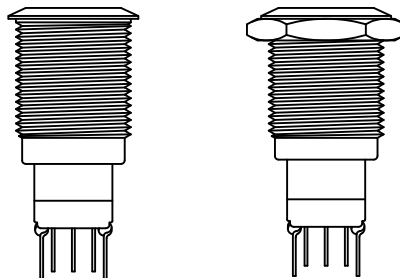
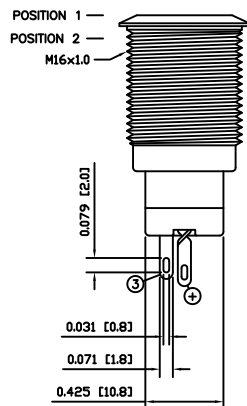
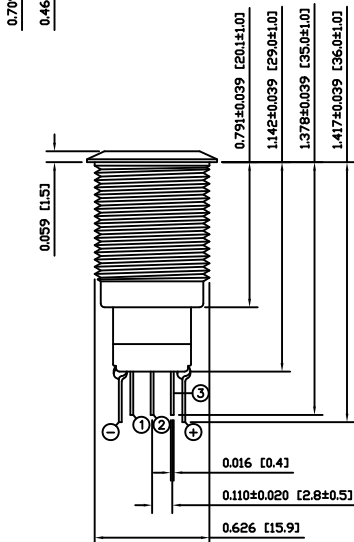
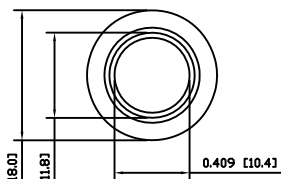
ELECTRICAL LIFE:
50,000 Cycles

MECHANICAL LIFE:
200,000 Cycles

TEMPERATURE:
Operating: -20°C to 55°C

INGRESS PROTECTION:
IP65

APPROVALS:
NOM **RoHS**
COMPLIANT



EXPLODED VIEW

ASSEMBLED VIEW

COLORS AND FINISH

BEZEL:
Stainless Steel
Polished Finish

ACTUATOR:
Stainless Steel
Polished Finish

ILLUMINATION:
Green (Forward)
Blue (Reverse)

LENS:
Transparent White

MARKING:
None

MATERIALS

BUSHING:
Stainless Steel (304)

BASE:
Polybutylene Terephthalate (PBT)
Polycarbonate (PC)

ACTUATOR:
Stainless Steel (304)

ILLUMINATION LENS:
Polycarbonate (PC)

HARDWARE:
Nickel Plated Brass (H59)

SEAL:
Silicone Rubber

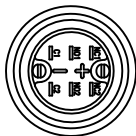
INNER ASSEMBLY:
Polyoxymethylene (POM)
Polycarbonate (PC)
Polybutylene Terephthalate (PBT)
Silver Plated Brass (H62)
Beryllium Copper

SPRING:
Stainless Steel (304)

CONTACTS:
Silver/Cadmium Oxide (AgCdO)

TERMINALS:
Silver Plated Brass (H62)

O-RING:
Silicone Rubber



BODY	A	10/02/05	CAB
COLORS	A	09/07/10	CAB
MATERIALS	B	10/01/11	CAB
SPECIFICATIONS	B	09/09/28	CAB
REFERENCE	REV.	DATE	BY

THE INFORMATION CONTAINED IN THIS DOCUMENT IS PROPRIETARY TO E-SWITCH AND IS NOT TO BE COPIED OR TRANSFERRED

A	INITIAL RELEASE	18940	10/03/23	CAB
REV.	DESCRIPTION	PCR	DATE	DRAWN BY

DIMENSIONS	INCHES [MILLIMETERS]
GENERAL TOLERANCES	±0.008 [±0.2] / ±1'
SCALE	DRAWING NOT TO SCALE

E-SWITCH **LAMB INDUSTRIES**

PV3WF2B0SS-3N4

DRAWING NUMBER: 52-PV3WF2B0SS3N4
DATE: MARCH 23, 2010
REVISION: A