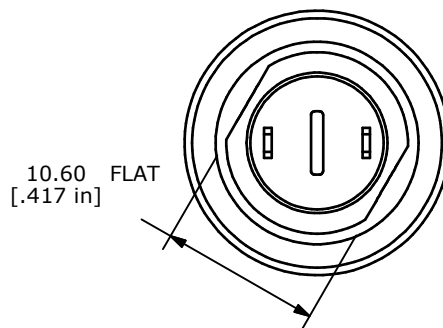
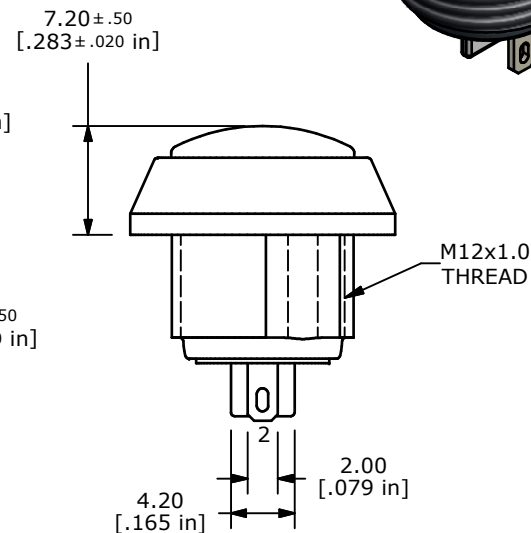
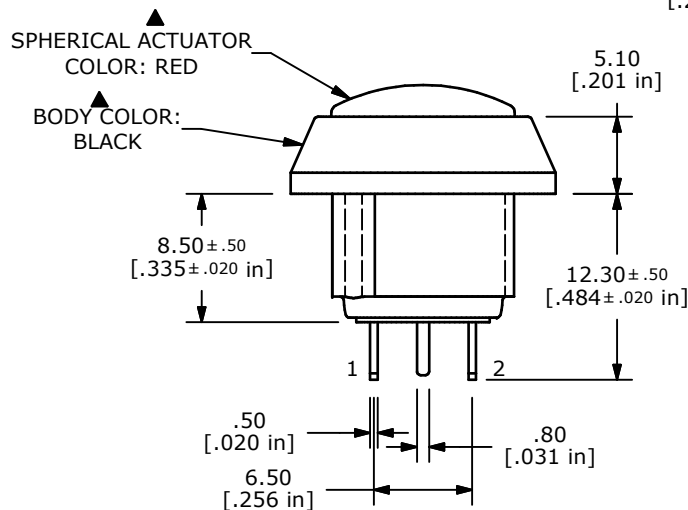
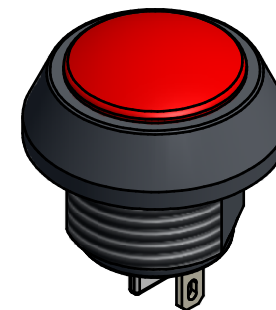
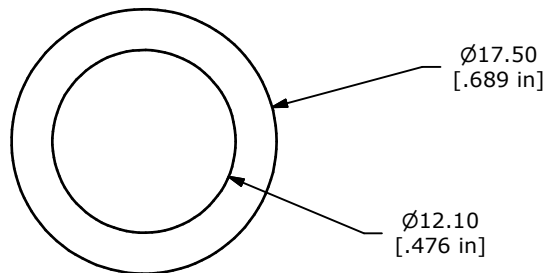
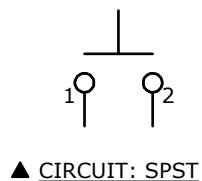


PANEL MOUNTING
MAX. PANEL THICKNESS 4mm

| SWITCH FUNCTION | |
|-----------------|--------|
| POS. 1 | POS. 2 |
| | |
| OFF | (ON) |
| OPEN | 1-2 |

(ON) = MOMENTARY

- NOTE:
- ALL DIMENSIONS IN MM [INCH]
 - GENERAL TOLERANCE: X.X=±0.4
X.XX=±0.25
 - TERMINAL NUMBERS FOR REF ONLY
 - CIRCUIT: SPST, OFF- (ON)
 - CONTACT MATERIAL: SILVER
 - RATING: 2A @ 48 VDC
 - ELECTRICAL LIFE: 200,000 CYCLES
 - CONTACT RESISTANCE: 50 mΩ MAX. @ 1A 12VDC (INITIAL)
 - INSULATION RESISTANCE: 1,000 MΩ MIN. @ 500VDC.
 - DIELECTRIC STRENGTH: 2,000 VAC rms.
 - OPERATING TEMPERATURE: -20°C TO +70°C.
 - INGRESS PROTECTION: IP65
 - ▲ DENOTES CRITICAL PARAMETER.
 - 2002/95/EC (ROHS) COMPLIANT
 - HARDWARE INCLUDED, 1 O-RING & 1 HEX NUT.(NOT SHOWN)



TITLE PV5S24019

| | | | | |
|-----|--------|------------------------|---------|-----|
| A | 20901 | RELEASE FOR PRODUCTION | 12/3/12 | EBP |
| REV | PCR NO | DESCRIPTION | DATE | BY |

THE INFORMATION CONTAINED IN THIS DOCUMENT IS PROPRIETARY TO E-SWITCH AND IS NOT TO BE COPIED OR TRANSFERRED

| | | | | |
|-------|-------------------|-----------|---------------------|----------|
| SCALE | DATE 12/3/2012 | DR EBP | DWG 52-PV5S24019 | REV A |
|-------|-------------------|-----------|---------------------|----------|