

5HM11

M

DRAWING NUMBER

28

ISSUE

4

REVISIONS

A PR-9527

J M J
28 OCT 80

B CO59465

J A P
4 FEB 87

C CO71228

DAW
1 NOV 91

REPLACES

RELEASE NO. PR-9527

CHECK

CHECK

28 OCT 80

C E B

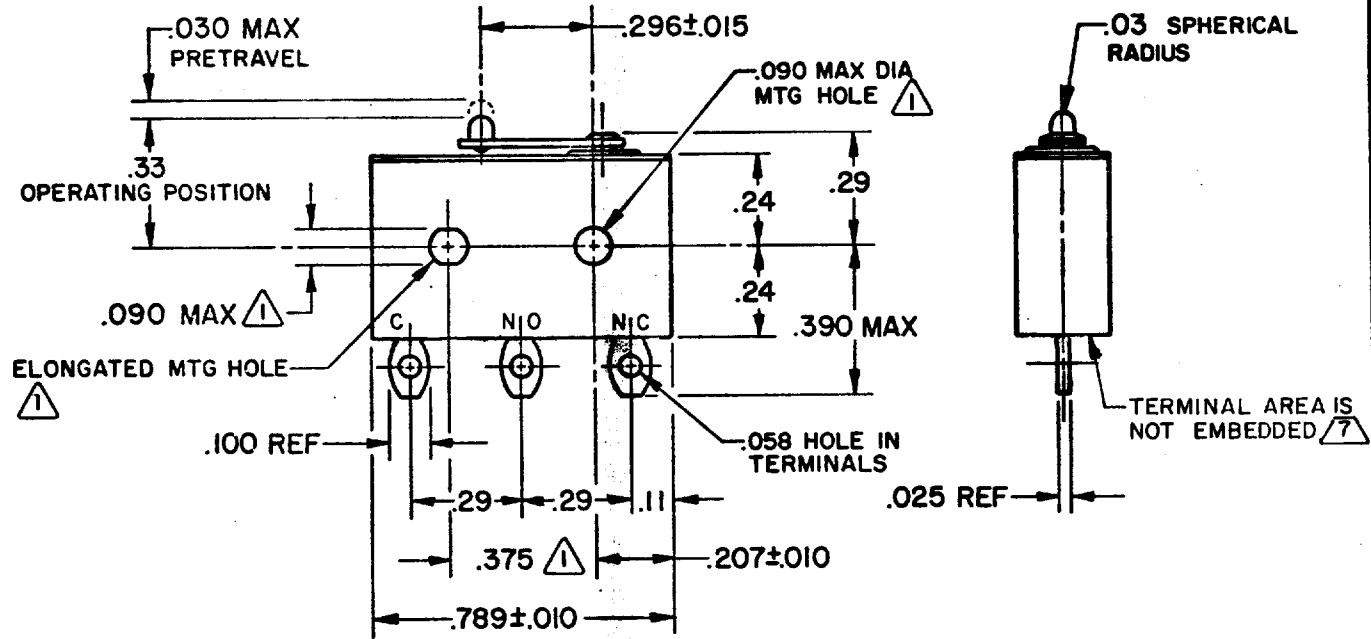
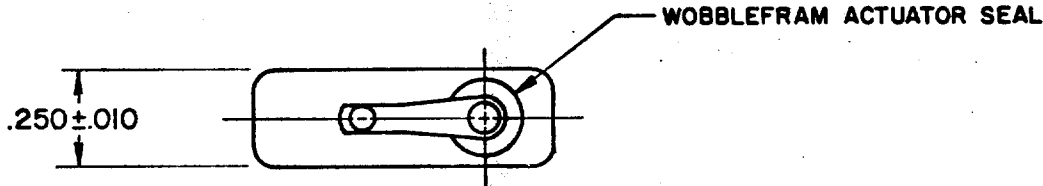
28 OCT 80

C E B

28 OCT 80

C E B

J M J



- NOTE -**
- 1 MOUNTING HOLES WILL ACCEPT PINS OR SCREWS OF .087 MAX DIA ON .375 ± .002 CENTERS
 - 2 - FOR USE IN TEMPERATURE RANGE -300°F TO +327°F
 - 3 - HERMETICALLY SEALED (METAL-TO-METAL, GLASS-TO-METAL)
 - 4 - ALL EXPOSED PARTS ARE OF CORROSION RESISTANT MATERIALS
 - 5 - TERMINALS ARE TINNED FOR SOLDERING
 - 6 - DO NOT APPLY MORE THAN 1 1/2 INCH-LBS OF TORQUE WHEN TIGHTENING MOUNTING SCREWS
 - 7 POTTING OF TERMINAL AREA IS RECOMMENDED

THIS DRAWING COVERS A PROPRIETARY ITEM AND IS THE PROPERTY OF MICRO SWITCH, A DIVISION OF HONEYWELL. THIS DRAWING IS NOT TO BE COPIED OR USED WITHOUT THE APPROVAL OF MICRO SWITCH.

THIRD ANGLE PROJECTION

CHARACTERISTICS	ELECTRICAL DATA			SCALE 2 TO 1	
	LINE VOLTAGE	INDUCTIVE LOAD	RESISTIVE LOAD	DO NOT SCALE PRINT	
OPERATING FORCE ----- 7 OZ MAX	CONTACT ARRANGEMENT SPDT			TOLERANCES APPLY TO DESIGN LIMITS. CONVERSIONS ARE ONLY FOR REFERENCE. UNLESS NOTED TOLERANCES ARE ±	
RELEASE FORCE ----- 1 OZ MIN	28 VDC	2 AMP	4 AMP	NO PLACES ONE PLACE TWO PLACES THREE PLACES ANGLES	DIM. mm TOL. mm/± 1/64 0.4/018 0.15/008
DIFFERENTIAL TRAVEL. --- .006 MAX	115 VAC (400 CYCLE)	2 1/2 AMP	2 1/2 AMP	DESIGN UNITS <input type="checkbox"/> METRIC <input checked="" type="checkbox"/> US CUSTOMARY	
OVERTRAVEL ----- .003 MIN				WEIGHT .014 LB MAX	

FD-52848-A