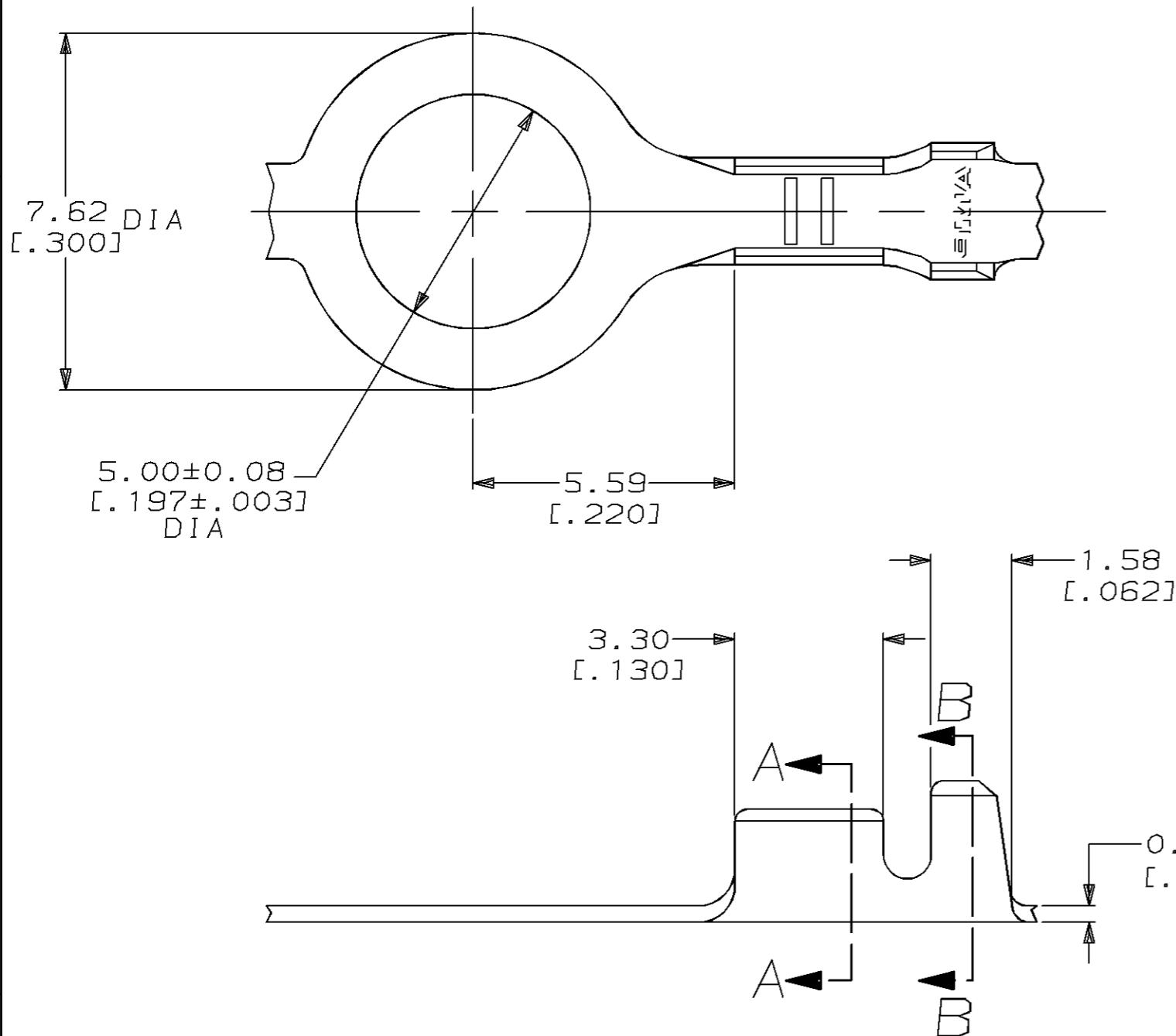
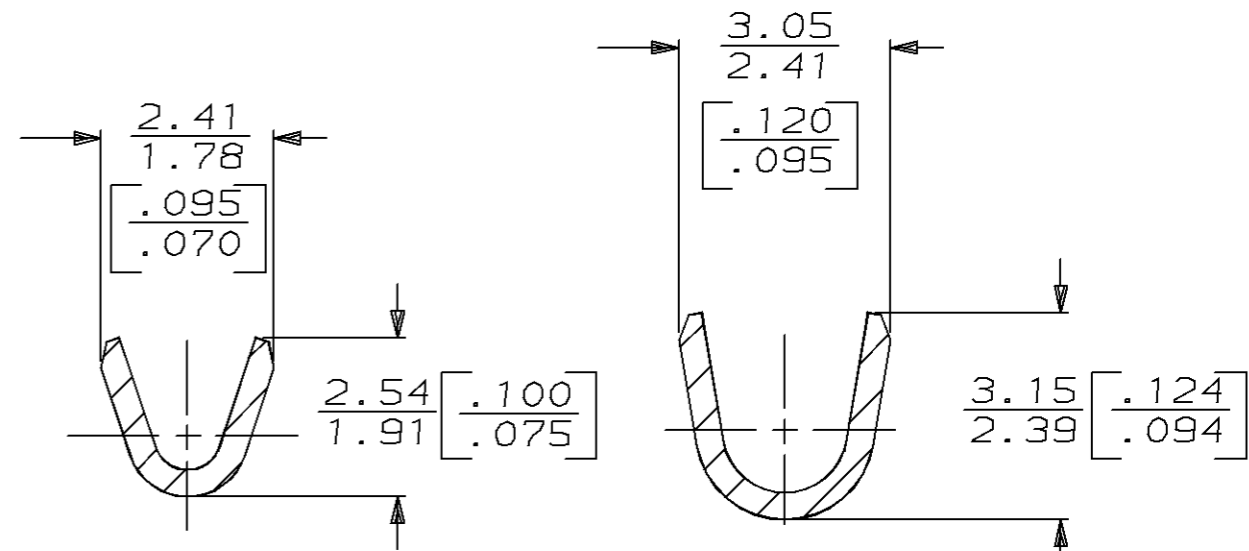


THIS DRAWING IS UNPUBLISHED. RELEASED FOR PUBLICATION, 19 .
 © COPYRIGHT 19 BY AMP INCORPORATED. ALL INTERNATIONAL RIGHTS RESERVED.

| LOC | DIST | P | F | ZONE | LTR | REVISIONS | DATE | APPD |
|-----|------|---|---|------|-----|-------------------------------|--------|-------|
| AF | 50 | | | | E | REDRAWN & REACTIVATED 60555-1 | 6/9/94 | PF/GY |



- 1 CONTINUOUS STRIP ON REEL.
- 2 0.002032 [±.000080] MIN TIN PLATE PER MIL-T-10727.



SECTION A-A
SCALE 10:1

SECTION B-B
SCALE 10:1

THIS DRAWING IS A CONTROLLED DOCUMENT FOR AMP INCORPORATED. IT IS SUBJECT TO CHANGE AND THE CONTROLLING ENGINEERING ORGANIZATION SHOULD BE CONTACTED FOR THE LATEST REVISION.

| | | | |
|--|--|---|--------------------|
| | 1.22-1.98 DIA [±.048-.078] | [24-20] AWG | 60555-2 |
| | | | 60555-1 |
| FINISH | INSULATION RANGE | WIRE RANGE | PART NO |
| DO NOT SCALE PRINT. UNLESS SPECIFIED DIMENSIONS IN mm [INCHES] TOLERANCES ON: 2 PLC DEC ± 0.25 [±.010] 3 PLC DEC ± - ANGLES ± - | DR 6/9/94 PHILLIP M FORTNEY CHK 6/9/94 JEFF RUTH APPD 6/9/94 GARY YETTER APPD 6/9/94 RON KUZO PRODUCT SPEC - | AMP AMP Incorporated Harrisburg, PA 17105-3608 | |
| MATERIAL 082 BRASS | APPLICATION SPEC - WEIGHT - | NAME RING | |
| FINISH SEE TABLE | | SIZE B | CAGE CODE 00779 |
| | | DRAWING NO C-60555 | |
| | | SCALE 8:1 | SHEET 1 OF 1 |