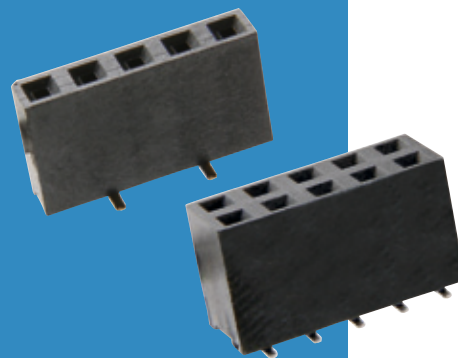


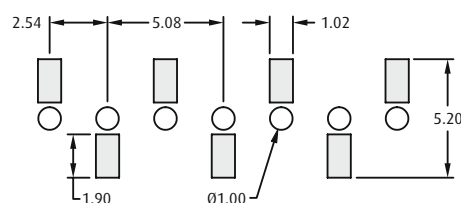
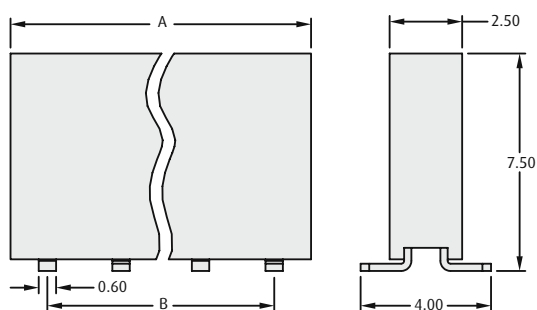
M20 Connectors

Female Vertical Surface Mount

- ❖ Suitable for use with male connectors shown on pages 146 to 152.
- ❖ Twin beam contact for cost-effective reliability.
- ❖ Tape and reel option available – contact technical@harwin.com.
- ❖ Dual Entry – connectors can be used for both top and bottom entry.

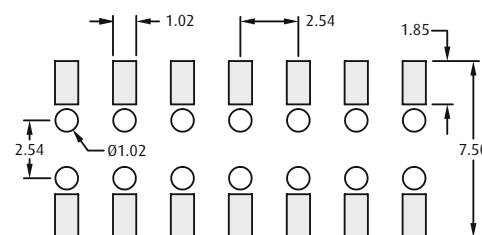
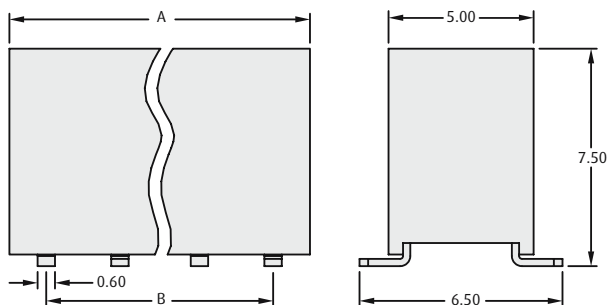


SINGLE ROW



Recommended PC Board Pattern

DOUBLE ROW



Recommended PC Board Pattern

CALCULATION

A	$B + 2.84$
B	$2.54 \times (\text{No. of contacts per row} - 1)$

HOW TO ORDER

M20 - 78 X XX XX

SERIES CODE

TYPE

6	Single Row
7	Double Row

FINISH

42	Gold + Tin	PG
46	Tin	PG

NO. OF CONTACTS PER ROW

02 to 40

All dimensions in mm.