

MICRO SWITCH
FREEPORT, ILLINOIS, U.S.A.
A DIVISION OF HONEYWELL
FED. MFG. CODE 91929

SWITCH-ENCLOSED

CATALOG LISTING
624EN222-6
MILITARY STDS PART NO.
MS27240-8

624EN222-6

M

DRAWING
NUMBER

ISSUE

3

RELEASE NO. PR-17591

CHECK

REVISIONS

A	PR17591
15	AUG 89
B	75787-7
16	MAY 94

CHECK

25 AUG 89

CHECK

25 AUG 89

CHECK

25 AUG 89

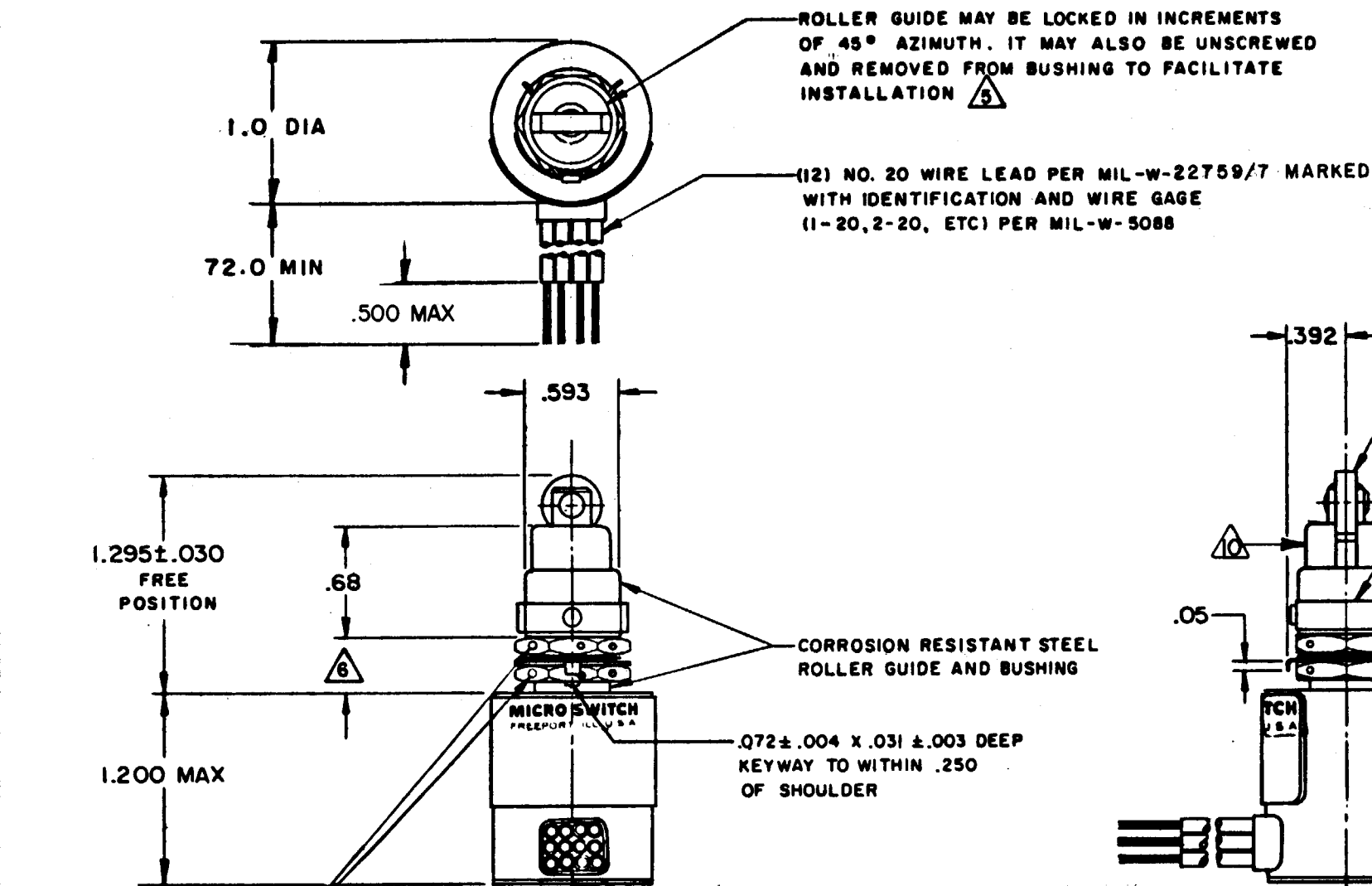
CHECK

25 AUG 89

CHECK

25 AUG 89

CHECK



ELECTRICAL RATINGS, GOLD CONTACTS

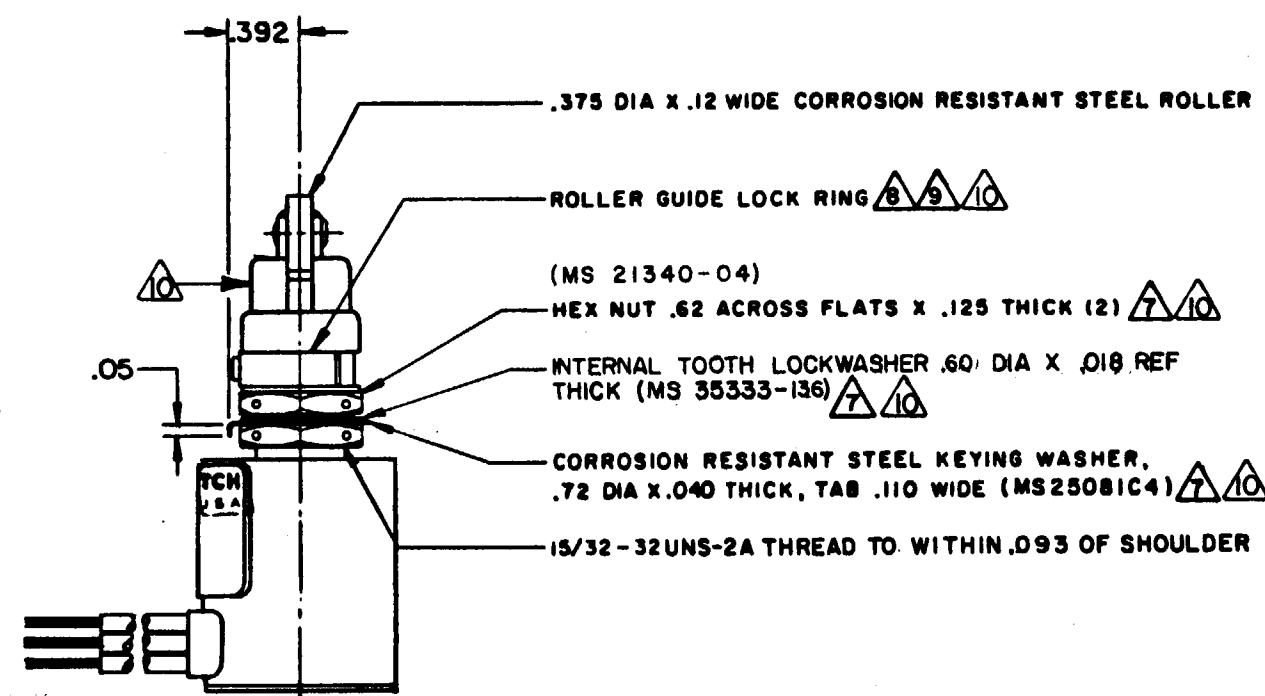
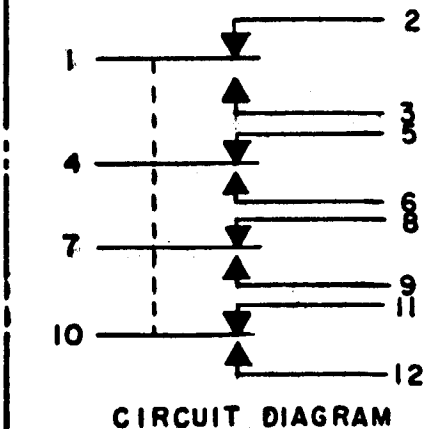
LOAD	SEA LEVEL			50,000 FEET	
	POWER CIRCUIT 28 V DC	ELECTRONIC LOGIC 5 V DC	LOW LEVEL 30mV DC OR PEAK AC	POWER CIRCUIT 28 V DC	ELECTRONIC LOGIC 5 V DC
RES	(A)	(A)		(A)	(A)
IND	1.0	0.01	0.01	1.0	0.01
	0.5	---	---	0.5	---

THIS DRAWING COVERS A PROPRIETARY ITEM AND IS THE PROPERTY OF MICRO SWITCH, A DIVISION OF HONEYWELL. THIS DRAWING IS NOT TO BE COPIED OR USED WITHOUT THE APPROVAL OF MICRO SWITCH.

CHARACTERISTICS	
OPERATING FORCE	6-12 LB
FULL OVERTRAVEL FORCE	30 LB MAX
RELEASE FORCE	4 LB MIN
PRETRAVEL	.040 MAX
DIFFERENTIAL TRAVEL	.020 MAX
OVERTRAVEL	.125 MIN

ELECTRICAL DATA	
CONTACT ARRANGEMENT	
S. P. D. T. (4)	

SCALE FULL	
DO NOT SCALE PRINT	
UNLESS OTHERWISE SPECIFIED TOLERANCES ARE	
ONE PLACE	(.0) ± .030
TWO PLACE	(.00) ± .015
THREE PLACE	(.000) ± .005
ANGLES	±
THIRD ANGLE PROJECTION	
WEIGHT .85 LB	



NOTES

- 1 - CORROSION RESISTANT STEEL ENCLOSURE
- 2 - SWITCH SEALED PER MIL-S-8805 SYMBOL 4
- 3 - CIRCUIT DIAGRAM, CATALOG LISTING, AND MILITARY STANDARDS PART NO. MS27240-8 ARE SHOWN ON NAMEPLATE
- 4 - COINCIDENCE OF OPERATING AND RELEASING POINTS: .010 INCH OF PLUNGER TRAVEL
- 5 - TO ADJUST ROLLER DIRECTION REMOVE ROLLER GUIDE LOCK RING SCREW ROLLER GUIDE TO DESIRED DIRECTION, SECURE BY REPLACING ROLLER GUIDE LOCK RING
- 6 - ROLLER GUIDE LOCATION CAN VARY BETWEEN .292 AND .450 WHILE MAINTAINING .125 MIN OVERTRAVEL
- 7 - REPLACEMENT MOUNTING HARDWARE - PACKET 19PA9
- 8 - REPLACEMENT ROLLER GUIDE AND LOCK RING - PACKET 15PA105
- 9 - REPLACEMENT LOCK RING - PACKET 15PA107
- 10 - HARDWARE MAY BE PACKAGED UNASSEMBLED PER MIL-S-8805