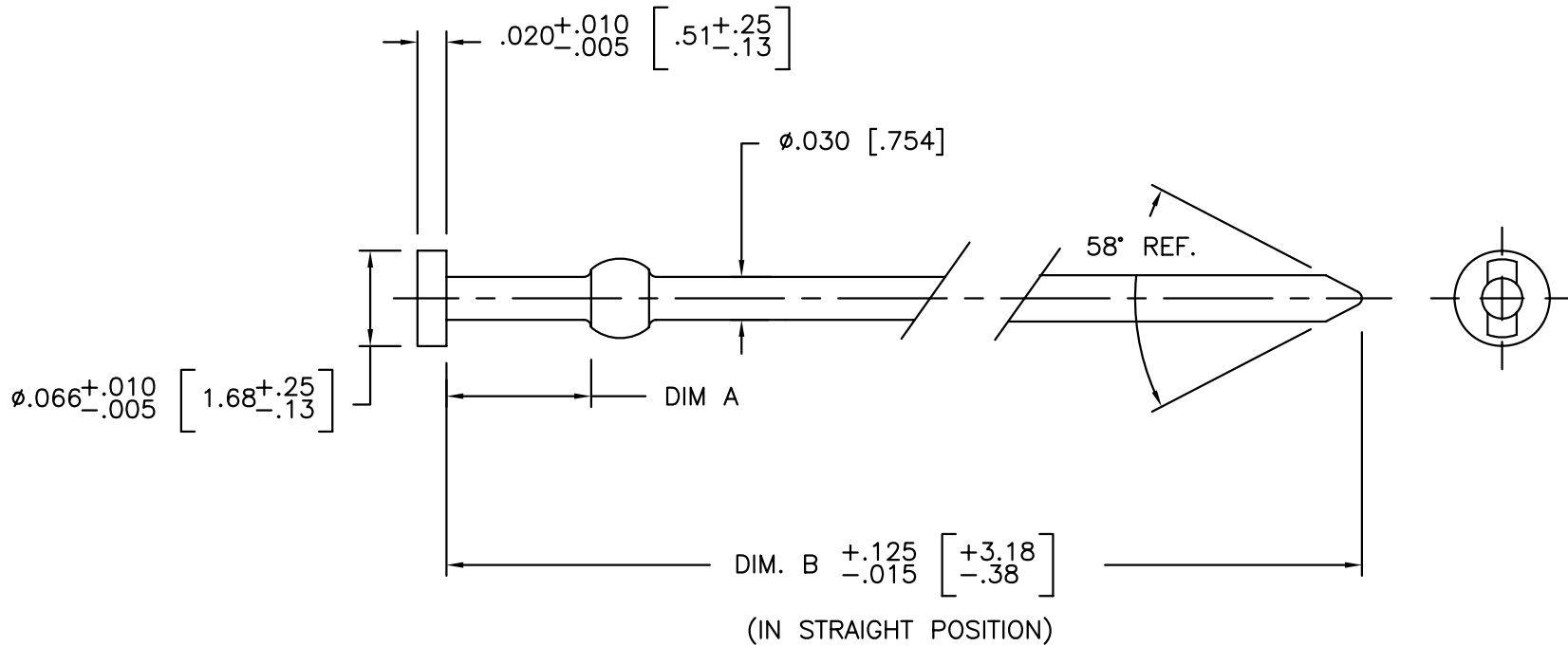


PRODUCT NUMBER  
SEE TABLE



NOTES:

1. NYLON MONOFILAMENT, COLOR: CLEAR OR GOLD.
2. ADD AN LF SUFFIX TO PART NUMBERS FOR PRODUCT THAT MEETS EUROPEAN UNION DIRECTIVES AND OTHER COUNTRY REGULATIONS AS DESCRIBED IN GS-22-008.
3. THIS PRODUCT IS NOT INTENDED TO BE EXPOSED TO MANUFACTURING SOLDER PROCESSES.
4. STANDARD TOLERANCES:  
 .XX±.01/.X±.3  
 .XXX±.005/.XX±.13  
 .XXXX±.0020/.XXX±.051

mat'l. code SEE NOTE 1				surface <input checked="" type="checkbox"/> tolerance		projection		product family PV HOUSINGS	
ltr	ecn no	dr	date	tolerances unless otherwise specified		title		MINI ROD HOUSING RETENTION ROD	
K	v00840	JWB	9/10/90	angles	linear	SEE NOTE 4		INCH/MM	
L	v11443	MRC	6/18/91	0°±2°		scale 1:1		dwg no 65048	
M	v23052	HTB	7/27/92	J. SHREINER		12/21/89		sheet 1 of 2	
N	v51438	SAR	2/2/96	H. SUNDY		12/21/89		A3	
P	v01024	RGD	7/21/00	H. SUNDY		12/21/89		type Product Customer Drawing	
R	v05-0712	DAI	7/27/05	H. SUNDY		12/21/89			
S	v06-0514	HTB	6/1/06	H. SUNDY		12/21/89			
sheet	revision	S	S						
index	sheet	1	2						

PRODUCT NUMBER NOTE 2	DIM A	DIM. B
65048-001	DISCONTINUED	
65048-002	DISCONTINUED	
65048-003	DISCONTINUED	
65048-004	DISCONTINUED	
65048-005	.100/2.54	4.650/118.11
65048-006	.100/2.54	4.500/114.30
65048-007	.100/2.54	4.350/110.49
65048-008	.100/2.54	4.200/106.68
65048-009	.100/2.54	4.050/102.87
65048-010	.100/2.54	3.900/99.06
65048-011	.100/2.54	3.750/95.25
65048-012	.100/2.54	3.600/91.44
65048-013	.100/2.54	3.450/87.63
65048-014	.100/2.54	3.300/83.82
65048-015	.100/2.54	3.150/80.01
65048-016	.100/2.54	3.100/78.74
65048-017	.100/2.54	3.000/76.20
65048-018	.100/2.54	2.900/73.66
65048-019	.100/2.54	2.850/72.39
65048-020	.100/2.54	2.800/71.12
65048-021	.100/2.54	2.700/68.58
65048-022	.100/2.54	2.600/66.04
65048-023	.100/2.54	2.550/64.77
65048-024	.100/2.54	2.500/63.50
65048-025	.100/2.54	2.400/60.96
65048-026	.100/2.54	2.300/58.42
65048-027	.100/2.54	2.250/57.17
65048-028	.100/2.54	2.200/55.88
65048-029	.100/2.54	2.100/53.34
65048-030	.100/2.54	2.000/50.80
65048-031	.100/2.54	1.950/49.53
65048-032	.100/2.54	1.900/48.26
65048-033	.100/2.54	1.800/45.72
65048-034	.100/2.54	1.700/43.18
65048-035	.100/2.54	1.650/41.91
65048-036	.100/2.54	1.600/40.64
65048-037	.100/2.54	1.500/38.10

PRODUCT NUMBER NOTE 2	DIM A	DIM. B
65048-038	.100/2.54	1.400/35.56
65048-039	.100/2.54	1.350/34.29
65048-040	.100/2.54	1.300/33.02
65048-041	.100/2.54	1.200/30.48
65048-042	.100/2.54	1.100/27.94
65048-043	.100/2.54	1.050/26.67
65048-044	.100/2.54	1.000/25.40
65048-045	.100/2.54	.900/22.86
65048-046	.100/2.54	.800/20.32
65048-047	DISCONTINUED	
65048-048	DISCONTINUED	
65048-049	DISCONTINUED	
65048-050	DISCONTINUED	
65048-051	DISCONTINUED	
65048-052	DISCONTINUED	
65048-053	DISCONTINUED	
65048-054	DISCONTINUED	
65048-055	DISCONTINUED	
65048-056	.100/2.54	5.500/139.70
65048-057	DISCONTINUED	
65048-058	DISCONTINUED	



FCJconnect.com

Copyright FCJ

mat'l. code SEE NOTE 1				surface <input checked="" type="checkbox"/> tolerance		projection		product family PV HOUSINGS		
lfr	ecn no	dr	date	tolerances unless otherwise specified		title		MINI ROD HOUSING RETENTION ROD		
s				angles	linear	SEE NOTE 4		INCH/MM		
				0±2'		scale 1:1		sheet 2 of 2		
				dr	J. SHREINER	12/21/89			size	
				enr	H. SUNDY	12/21/89			dwg no	65048
				chr	H. SUNDY	12/21/89			type	Product Customer Drawing
				appd	H. SUNDY	12/21/89				
sheet index	revision sheet									