

SPECIFICATIONS:


<b>ELECTRICAL:</b>	
INSULATOR RESISTANCE:	5,000 MegOHMS Min.
DIELECTRIC WITHSTANDING:	1,000VAC r.m.s.
OPERATING TEMPERATURE:	-55° C ~ +125° C
CONTACT RESISTANCE:	30 MillioHMS Max.
POWER PINS:	SEE PART No. BELOW
SIGNAL PINS:	3 AMPS
<b>MECHANICAL:</b>	
CONTACT INSERTION FORCE:	4.5 Kg Max.
CONTACT SEPARATOR FORCE:	0.3Kg Min.
<b>MATERIALS:</b>	
CONTACTS:	BRASS
INSULATOR:	PBT UL94V-0 RATED, 230°C PROCESS TEMP.
SHELL:	STEEL
SEAL:	F04 FLEXIBLE MATERIAL
<b>FINISH:</b>	
SHELL:	NICKEL

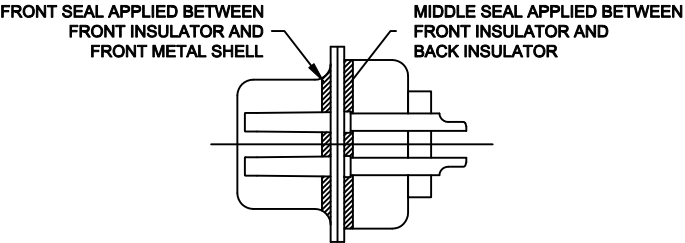
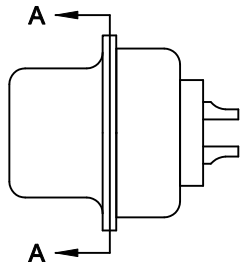
680S21WA4SLYY1

20 = 20 AMPS  
40 = 40 AMPS

MEETS IP67 STANDARDS  
(SEE PAGE 2 FOR SEALING DETAILS)

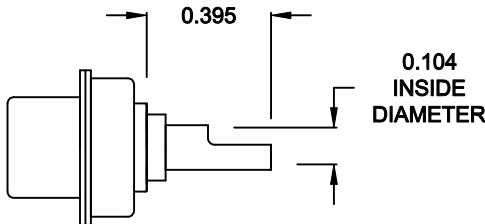
RoHS COMPLIANT

	THESE DRAWINGS AND SPECIFICATIONS ARE THE PROPERTY OF NorComp AND SHALL NOT BE REPRODUCED, COPIED OR USED AS THE BASIS FOR THE MANUFACTURE OF SALE OF APPARATUS WITHOUT WRITTEN PERMISSION.	DRAWN: <b>M. SIGMON</b>		DATE: <b>06-10-13</b>	
		CHECKED: <b>X</b>		DATE: <b>X</b>	
<b>NorComp</b>		SCALE: <b>N.T.S.</b>	SHEET <b>1</b> OF <b>2</b>		REV <b>0</b>
		DWG NO. <b>680S21WA4SLYY1</b>			

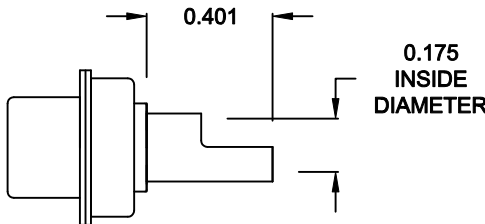


DETAIL A-A  
SHOWN FOR REFERENCE ONLY

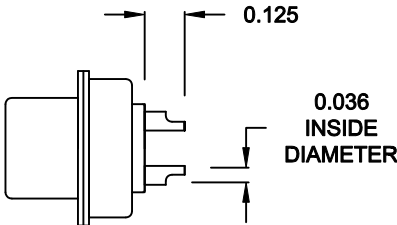
NOTE:  
SIGNAL AND POWER CONTACTS  
COME PRE-LOADED INTO INSULATORS



20 AMP POWER CONTACTS  
ACCEPTS UP TO 12 AWG WIRE



40 AMP POWER CONTACTS  
ACCEPTS UP TO 8 AWG WIRE



SIGNAL CONTACTS  
ACCEPTS UP TO 20 AWG WIRE

RoHS COMPLIANT



THESE DRAWINGS AND SPECIFICATIONS ARE THE PROPERTY OF NorComp AND SHALL NOT BE REPRODUCED, COPIED OR USED AS THE BASIS FOR THE MANUFACTURE OR SALE OF APPARATUS WITHOUT WRITTEN PERMISSION.

DRAWN:  
M. SIGMON

DATE:  
06-10-13

CHECKED:

DATE:

NorComp

SCALE: 1.5 = 1      SHEET 2 OF 2      REV 0

DWG NO. 680S21WA4S3LYY1