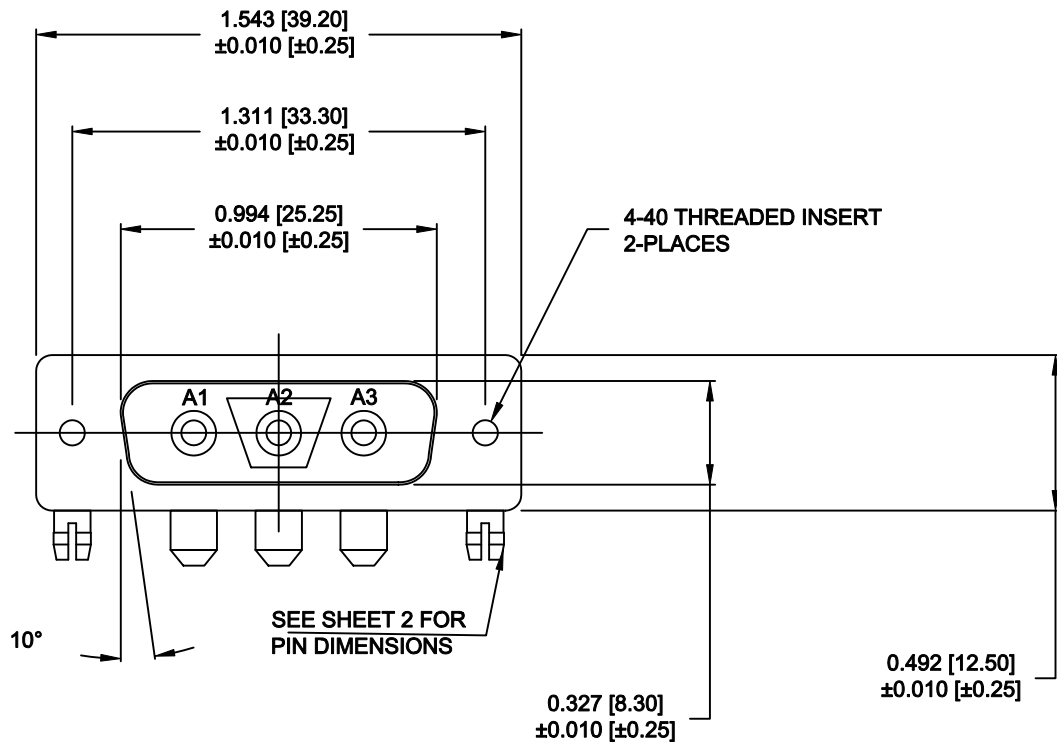


DESCRIPTION: POWER - RIGHT ANGLE - MALE - MACHINED



SPECIFICATIONS:

- ELECTRICAL:**

INSULATOR RESISTANCE: 5G OHMS Min.

DIELECTRIC WITHSTANDING: 1,000VAC r.m.s.

OPERATING TEMPERATURE: -55° C ~ +125° C

POWER CONTACT RESISTANCE: 1.0 Milliohms Max.

POWER PINS: 40 AMPS
- MECHANICAL:**

CONTACT INSERTION FORCE: 4.5 Kg Max.

CONTACT SEPARATOR FORCE: 0.3Kg Min.
- MATERIALS:**

CONTACTS: COPPER ALLOY

INSULATOR: PBT UL94V-0 RATED, 230°C PROCESS TEMP.

SHELL: STEEL

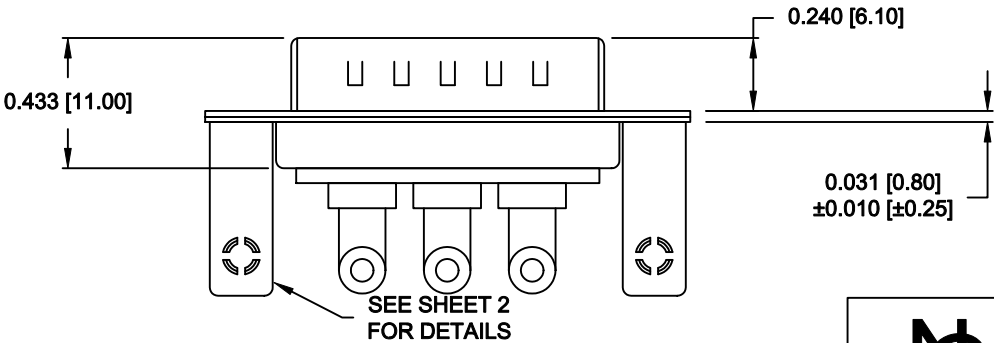
BOARD LOCK: BRASS, NICKEL PLATED

CINCHNUT: BRASS, NICKEL PLATED

BRACKET: STEEL, NICKEL PLATED
- FINISH:**

SHELL: NICKEL



CONTACTS: FULL GOLD PLATED



684M3W3K103L461

46 = 4-40 INSERTS / BOARD LOCKS

RoHS COMPLIANT

	THESE DRAWINGS AND SPECIFICATIONS ARE THE PROPERTY OF NorComp AND SHALL NOT BE REPRODUCED, COPIED OR USED AS THE BASIS FOR THE MANUFACTURE OR SALE OF APPARATUS WITHOUT WRITTEN PERMISSION.	DRAWN: M. SIGMON		DATE: 07-22-13	
		CHECKED:		DATE:	
		SCALE: 1.5 = 1	SHEET 1 OF 2		REV 0
		DWG NO. 684M3W3K103L461			

