

TECHNICAL CHARACTERISTICS

MATERIAL  
 INSULATOR MATERIAL: PET (WHITE)  
 SUPPORT TAPE: PET (BLUE)  
 CONTACT MATERIAL: COPPER  
 CONTACT PLATING: TIN  
 QUALITY CLASS: 20 MATING CYCLES MIN.  
 PITCH: 1.00 MM

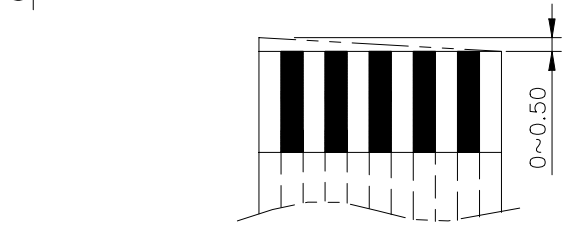
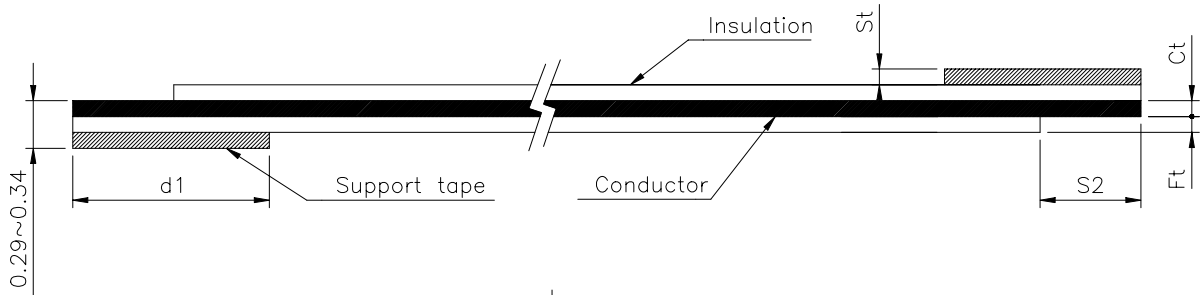
ENVIRONMENTAL  
 OPERATING TEMPERATURE: -30°C UP TO 105°C  
 HEAT RESISTANCE: 85°C x 95 HRS  
 FLAMMABILITY RATING UL SUB.758  
 MOISTURE RESISTANCE: 40°C, 95% RH x 96 HRS  
 COMPLIANCE: LEAD FREE AND ROHS

ELECTRICAL  
 CURRENT RATING: 1A MAX  
 WORKING VOLTAGE: 60V  
 INSULATION RESISTANCE: > 1000 MOHM/M (500 VDC)  
 DIELECTRIC STRENGTH: 500 VAC/MN NO BREAKDOWN  
 CONDUCTOR RESISTANCE: < 0.33 OHM/M  
 CONTACT RESISTANCE: < 20 mA

MECHANICAL  
 ELONGATION OF INSULATOR: > 60 %  
 TENSIL STRENGTH OF INSULATION: > 3.5KG/MM<sup>2</sup>  
 FLEXING TEST: 180° > 20 TIMES  
 ABRASION: > 10000 TIMES  
 PULL/OUT: > 20 TIMES

PACKAGING  
 BAG

DIMENSION & TOLERANCE  
 W = (N+1) x P  
 Pt = (N-1) x P



Tolerance of Cutting Tilt

ABBR.	P	L	M	Ct	Cw	S1	S2	D1	D2
VALUE	1.00	50	1.0	0.10	0.7	5.0	5.0	10.0	10.0
TOLER.	±0.08	±3	±0.12	±0.01	±0.03	±1.0	±1.0	±2.0	±2.0

RoHS Compliant			
G			
F			
E			
D			
C			
B	07-FEB-08	INSULATOR ELONG.	CH
A	11-DEC-07	PDF	EC
REV	DATE	FILE	BY

PROJECTION:			
APPROVAL: RJ			

GENERAL TOLERANCE	
.X = +/- 0.2	
.XX = +/- 0.15	
UNIT: MM	DESCRIPTION: 1.00MM FLAT FLEXIBLE CABLE TYPE 2 L=50MM
SCALE:	WERI PART NO: 6867 xx 050 001
SHEET: 1/1	
DRAW: CH	

SIZE

A4

A  
B  
C  
D