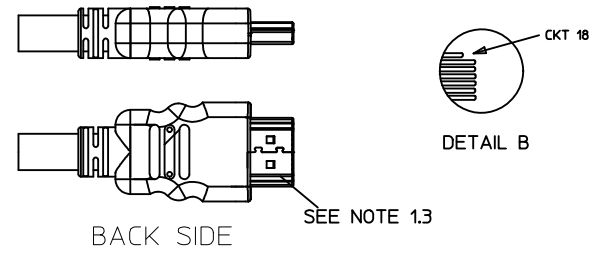
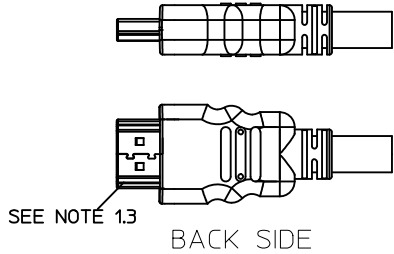
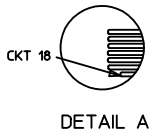
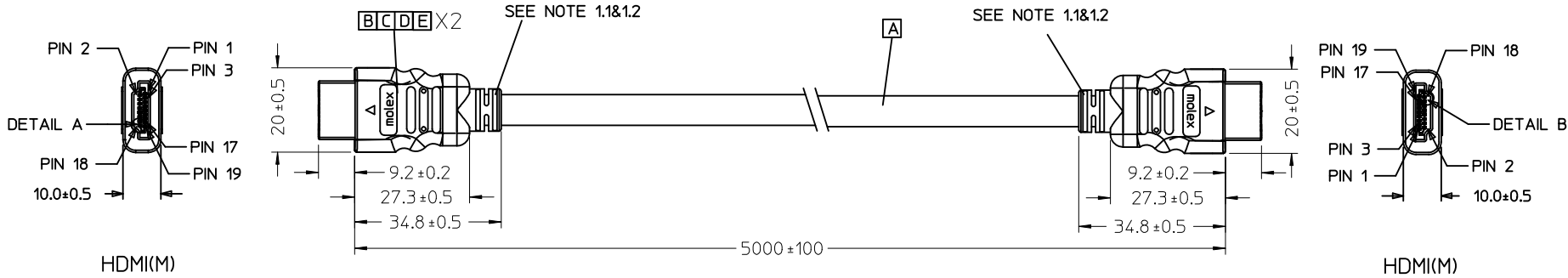


7 6 5 4 3 2 1



ENTER DESCRIPTION EC NO: DG2011-0440 DRWN:FZHANG01 CHKD:JLJU13 APPR:ZXDENG	DESCRIPTION 2011/05/04 2011/05/04 2011/05/11	QUALITY SYMBOLS ▽=0 ◻=0	GENERAL TOLERANCES (UNLESS SPECIFIED)		DIMENSION STYLE MM ONLY		SCALE ---	DESIGN UNITS METRIC	THIRD ANGLE PROJECTION		
				mm	INCH	DRAWN BY FZHANG01	DATE 2011/05/03	TITLE HDMI(M) TO HDMI(M) CABLE ASS'Y			
			4 PLACES	± ---	± ---	CHECKED BY JFZHENG	DATE 2011/05/03				
			3 PLACES	± ---	± ---	APPROVED BY ZXDENG	DATE 2011/05/11	MOLEX INCORPORATED			
			2 PLACES	± 0.25	± ---	MATERIAL NO. 687670022	DOCUMENT NO. SD-68767-0022				
1 PLACE	± 0.5	± ---	DRAFT WHERE APPLICABLE MUST REMAIN WITHIN DIMENSIONS		THIS DRAWING CONTAINS INFORMATION THAT IS PROPRIETARY TO MOLEX INCORPORATED AND SHOULD NOT BE USED WITHOUT WRITTEN PERMISSION						

6 5 4 3 2 1

7

6

5

4

3

2

1

## WIRE DIAGRAM:

SHIELD	SHIELD	OVERALL SHIELD	GROUND
PIN 19	PIN 19	PINK	HOT PLUG DETECT
PIN 18	PIN 18	ORANGE	+5V POWER
PIN 17	PIN 17	YELLOW	DDC/CEC GROUND
PIN 16	PIN 16	WHITE	SDA
PIN 15	PIN 15	RED	SCL
PIN 14	PIN 14	VIOLET	RESERVED
PIN 13	PIN 13	GRAY	CEC
PIN 12	PIN 12	WHITE	TMDS CLOCK-
PIN 11	PIN 11	BRAID	TMDS CLOCK SHIELD
PIN 10	PIN 10	BLACK	TMDS CLOCK+
PIN 9	PIN 9	WHITE	TMDS DATA 0-
PIN 8	PIN 8	BRAID	TMDS DATA 0 SHIELD
PIN 7	PIN 7	BLUE	TMDS DATA 0+
PIN 6	PIN 6	WHITE	TMDS DATA 1-
PIN 5	PIN 5	BRAID	TMDS DATA 1 SHIELD
PIN 4	PIN 4	GREEN	TMDS DATA 1+
PIN 3	PIN 3	WHITE	TMDS DATA 2-
PIN 2	PIN 2	BRAID	TMDS DATA 2 SHIELD
PIN 1	PIN 1	RED	TMDS DATA 2+
HDMI	HDMI	COLOR	CABLE FUNCTION

## NOTE:

1. OVERMOLD SPECIFICATION:
  - 1.1 HDMI INNERMOLD WITH BK PVC
  - 1.2 HDMI OVERMOLD WITH PVC
  - 1.3 HDMI DUST COVER WITH PE
2. PRODUCT ELECTRICAL SPECIFICATION:  
REFER TO HDMI SPECIFICATION FOR DETAILS.
3. THIS PRODUCT MUST MEET ROHS COMPLIANCE.

E	PRE-CUT C.Foil 47X23mm T=25U		2																																																						
D	COPPER FOIL		2																																																						
C	HDMI 19P MALE,30U" Au Solder Type		2																																																						
B	Metal Shell For HDMI 19P Male,Gold flash		2																																																						
A	(4P+1P)X28+5CX28,ALSH,PVC,BK,7.3,UL20276	5000 ref.	1																																																						
ITEM	DESCRIPTION	LENGTH	QTY.																																																						
<table border="1"> <thead> <tr> <th colspan="2">DIMENSION STYLE</th> <th>SCALE</th> <th>DESIGN UNITS</th> <th rowspan="2">THIRD ANGLE PROJECTION</th> </tr> <tr> <th colspan="2">MM ONLY</th> <th>---</th> <th>METRIC</th> </tr> </thead> <tbody> <tr> <td>DRAWN BY</td> <td>DATE</td> <td colspan="3">TITLE</td> </tr> <tr> <td>FZHANG01</td> <td>2011/05/03</td> <td colspan="3">HDMI(M) TO HDMI(M) CABLE ASS'Y</td> </tr> <tr> <td>CHECKED BY</td> <td>DATE</td> <td colspan="3">MOLEX INCORPORATED</td> </tr> <tr> <td>JFZHENG</td> <td>2011/05/03</td> <td colspan="3">SD-68767-0022</td> </tr> <tr> <td>APPROVED BY</td> <td>DATE</td> <td colspan="3">SHEET NO.</td> </tr> <tr> <td>ZXDENG</td> <td>2011/05/11</td> <td colspan="3">2 OF 2</td> </tr> <tr> <td colspan="2">MATERIAL NO.</td> <td colspan="2">DOCUMENT NO.</td> <td></td> </tr> <tr> <td colspan="2">687670022</td> <td colspan="2">SD-68767-0022</td> <td></td> </tr> <tr> <td colspan="5">           THIS DRAWING CONTAINS INFORMATION THAT IS PROPRIETARY TO MOLEX INCORPORATED AND SHOULD NOT BE USED WITHOUT WRITTEN PERMISSION         </td> </tr> </tbody> </table>				DIMENSION STYLE		SCALE	DESIGN UNITS	THIRD ANGLE PROJECTION	MM ONLY		---	METRIC	DRAWN BY	DATE	TITLE			FZHANG01	2011/05/03	HDMI(M) TO HDMI(M) CABLE ASS'Y			CHECKED BY	DATE	MOLEX INCORPORATED			JFZHENG	2011/05/03	SD-68767-0022			APPROVED BY	DATE	SHEET NO.			ZXDENG	2011/05/11	2 OF 2			MATERIAL NO.		DOCUMENT NO.			687670022		SD-68767-0022			THIS DRAWING CONTAINS INFORMATION THAT IS PROPRIETARY TO MOLEX INCORPORATED AND SHOULD NOT BE USED WITHOUT WRITTEN PERMISSION				
DIMENSION STYLE		SCALE	DESIGN UNITS	THIRD ANGLE PROJECTION																																																					
MM ONLY		---	METRIC																																																						
DRAWN BY	DATE	TITLE																																																							
FZHANG01	2011/05/03	HDMI(M) TO HDMI(M) CABLE ASS'Y																																																							
CHECKED BY	DATE	MOLEX INCORPORATED																																																							
JFZHENG	2011/05/03	SD-68767-0022																																																							
APPROVED BY	DATE	SHEET NO.																																																							
ZXDENG	2011/05/11	2 OF 2																																																							
MATERIAL NO.		DOCUMENT NO.																																																							
687670022		SD-68767-0022																																																							
THIS DRAWING CONTAINS INFORMATION THAT IS PROPRIETARY TO MOLEX INCORPORATED AND SHOULD NOT BE USED WITHOUT WRITTEN PERMISSION																																																									

ENTER DESCRIPTION EC NO: DG2011-0440 DRWN:FZHANG01 CHKD:JL1U13 APPR:ZXDENG	2011/05/04 2011/05/04 2011/05/11	QUALITY SYMBOLS ▽=0 ▽=0	GENERAL TOLERANCES (UNLESS SPECIFIED)		
				mm	INCH
			4 PLACES	± ---	± ---
			3 PLACES	± ---	± ---
			2 PLACES	± 0.25	± ---
1 PLACE	± 0.5	± ---			
ANGULAR ± ---°					
DRAFT WHERE APPLICABLE MUST REMAIN WITHIN DIMENSIONS					
A	REV				

6

5

4

3

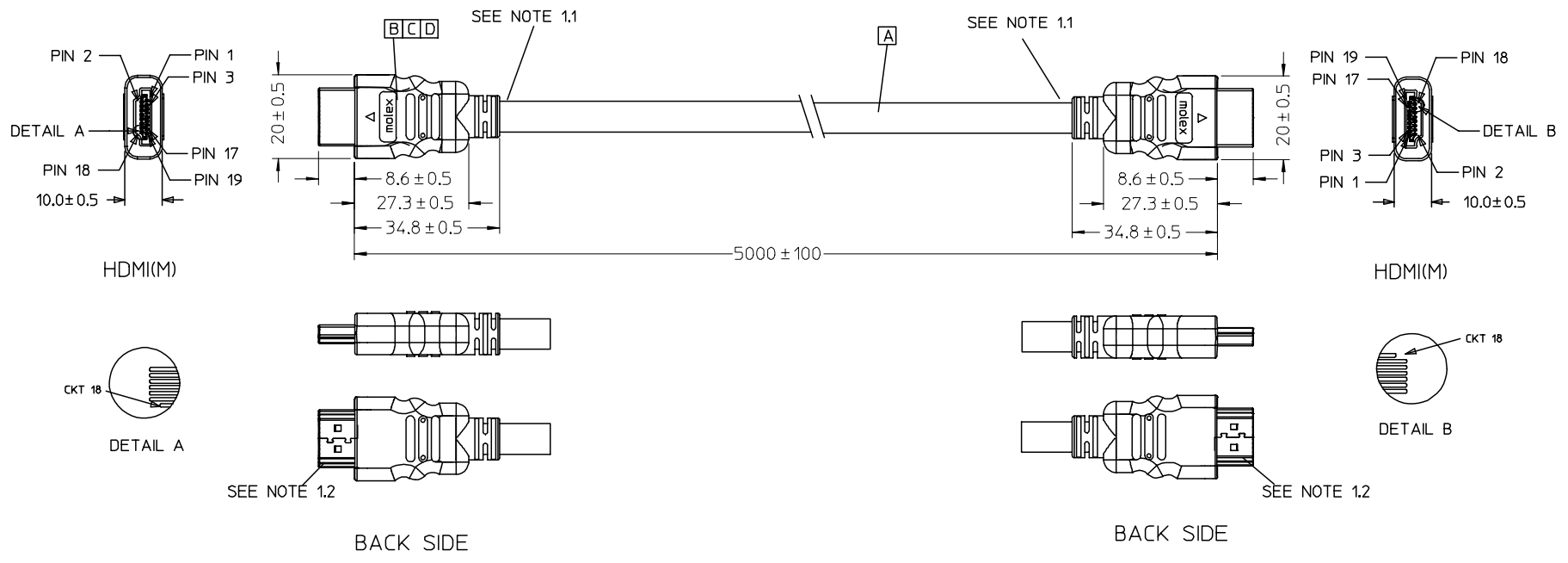
2

1

7 6 5 4 3 2 1

E  
D  
C  
B  
A

E  
D  
C  
B  
A



Released EC NO: DG2007-0027 DRWN: JF ZHENG 2006/09/02 CHKD: JF ZHENG 2006/09/04 APPR: DQ LUO 2006/09/04	QUALITY SYMBOLS ▼ = 0 ▽ = 0	GENERAL TOLERANCES (UNLESS SPECIFIED) <table border="1"> <thead> <tr> <th></th> <th>mm</th> <th>INCH</th> </tr> </thead> <tbody> <tr> <td>4 PLACES</td> <td>± ---</td> <td>± ---</td> </tr> <tr> <td>3 PLACES</td> <td>± ---</td> <td>± ---</td> </tr> <tr> <td>2 PLACES</td> <td>± ---</td> <td>± ---</td> </tr> <tr> <td>1 PLACE</td> <td>± ---</td> <td>± ---</td> </tr> </tbody> </table>		mm	INCH	4 PLACES	± ---	± ---	3 PLACES	± ---	± ---	2 PLACES	± ---	± ---	1 PLACE	± ---	± ---	DIMENSION STYLE MM ONLY	SCALE ---	DESIGN UNITS METRIC	THIRD ANGLE PROJECTION
		mm	INCH																		
	4 PLACES	± ---	± ---																		
	3 PLACES	± ---	± ---																		
	2 PLACES	± ---	± ---																		
1 PLACE	± ---	± ---																			
DESCRIPTION 1	DRAFT WHERE APPLICABLE MUST REMAIN WITHIN DIMENSIONS	DRAWN BY JF ZHENG	DATE 2006/08/26	TITLE HDMI(M) TO HDMI(M) GOLD 5M CABLE, 28#AWG																	
		CHECKED BY JF ZHENG	DATE 2006/08/26	MOLEX INCORPORATED																	
		APPROVED BY DQ LUO	DATE 2006/08/26	MATERIAL NO. 687670022	DOCUMENT NO. SD-68767-022	SHEET NO. 1 OF 2															
			SIZE A4	THIS DRAWING CONTAINS INFORMATION THAT IS PROPRIETARY TO MOLEX INCORPORATED AND SHOULD NOT BE USED WITHOUT WRITTEN PERMISSION																	

6 5 4 3 2 1

7 6 5 4 3 2 1

WIRE DIAGRAM:

SHIELD	SHIELD	OVERALL SHIELD	GROUND
PIN 19	PIN 19	PINK	HOT PLUG DETECT
PIN 18	PIN 18	ORANGE	+5V POWER
PIN 17	PIN 17	YELLOW	DDC/CEC GROUND
PIN 16	PIN 16	WHITE	SDA
PIN 15	PIN 15	RED	SCL
PIN 14	PIN 14	VIOLET	RESERVED
PIN 13	PIN 13	GRAY	CEC
PIN 12	PIN 12	WHITE	TMDS CLOCK-
PIN 11	PIN 11	BRAID	TMDS CLOCK SHIELD
PIN 10	PIN 10	WHITE/BLACK	TMDS CLOCK+
PIN 9	PIN 9	WHITE	TMDS DATA 0-
PIN 8	PIN 8	BRAID	TMDS DATA 0 SHIELD
PIN 7	PIN 7	WHITE/BLUE	TMDS DATA 0+
PIN 6	PIN 6	WHITE	TMDS DATA 1-
PIN 5	PIN 5	BRAID	TMDS DATA 1 SHIELD
PIN 4	PIN 4	WHITE/GREEN	TMDS DATA 1+
PIN 3	PIN 3	WHITE	TMDS DATA 2-
PIN 2	PIN 2	BRAID	TMDS DATA 2 SHIELD
PIN 1	PIN 1	WHITE/RED	TMDS DATA 2+
HDMI	HDMI	COLOR	CABLE FUNCTION

NOTE:

- OVEMROLD SPECIFICATION:
  - HDMI INNERMOLD WITH BK PVC 887800019.
  - HDMI OVERMOLD WITH PVC 887800150.
  - HDMI DUST COVER WITH PE 887800008.
- MECHANICAL SPECIFICATION:
 

CABLE SHOULD STAND THE PULL FORCE 89-111N FOR 30 SECONDS WITH NO VISIBLE TERMINATION DAMAGE.
- PRODUCT ELECTRICAL SPECIFICATION:
  - DIELECTRIC STRENGTH.
  - INSULATION RESISTANCE.
  - CONDUCTIVE RESISTANCE.
  - TMDS Signals Time Domain Impedence
  - TMDS Signals Time Domain Crosstalk:FEXT
  - TMDS Signals Skew
  - Attenuation

REFER TO ES-002 ELECTRICAL SPECIFICATION FOR DETAILS.
- CABLE CONSTRUCTION:
 

(4P+1P+5)\*28AWG;SHLD;PVC;BK;7.30MM;HDMI
- THIS PRODUCT MUST MEET ROHS COMPLIANCE.

D	HDMI METAL PLATE 47152-6009		2
C	HDMI METAL CAN GOLD FLASH 47152-4002		2
B	HDMI HOUSING ASSY BLACK 47152-1000		2
A	HDMI SINGLE LINK CABLE 172000455	5000 ref.	1
ITEM	DESCRIPTION	LENGTH	QTY.

Released EC NO: DG2007-0027 DRWN: JF ZHENG 2006/09/02 CHKD: JF ZHENG 2006/09/04 APPR: DQ LUO 2006/09/04	DESCRIPTION 1	QUALITY SYMBOLS	GENERAL TOLERANCES (UNLESS SPECIFIED)	DIMENSION STYLE	SCALE	DESIGN UNITS	THIRD ANGLE PROJECTION																		
		=0 =0	<table border="1"> <thead> <tr> <th></th> <th>mm</th> <th>INCH</th> </tr> </thead> <tbody> <tr> <td>4 PLACES</td> <td>± ---</td> <td>± ---</td> </tr> <tr> <td>3 PLACES</td> <td>± ---</td> <td>± ---</td> </tr> <tr> <td>2 PLACES</td> <td>± ---</td> <td>± ---</td> </tr> <tr> <td>1 PLACE</td> <td>± ---</td> <td>± ---</td> </tr> <tr> <td colspan="3">ANGULAR ± ---°</td> </tr> </tbody> </table>		mm	INCH	4 PLACES	± ---	± ---	3 PLACES	± ---	± ---	2 PLACES	± ---	± ---	1 PLACE	± ---	± ---	ANGULAR ± ---°			MM ONLY	---	METRIC	
			mm	INCH																					
		4 PLACES	± ---	± ---																					
3 PLACES	± ---	± ---																							
2 PLACES	± ---	± ---																							
1 PLACE	± ---	± ---																							
ANGULAR ± ---°																									
	DRAWN BY	DATE	TITLE	HDMI(M) TO HDMI(M) GOLD 5M CABLE, 28#AWG																					
	JF ZHENG	2006/08/26																							
	CHECKED BY	DATE		MOLEX INCORPORATED																					
	JF ZHENG	2006/08/26																							
	APPROVED BY	DATE		MATERIAL NO.	DOCUMENT NO.	SHEET NO.																			
	DQ LUO	2006/08/26		687670022	SD-68767-022	2 OF 2																			
			DRAFT WHERE APPLICABLE MUST REMAIN WITHIN DIMENSIONS	THIS DRAWING CONTAINS INFORMATION THAT IS PROPRIETARY TO MOLEX INCORPORATED AND SHOULD NOT BE USED WITHOUT WRITTEN PERMISSION																					

6 5 4 3 2 1