

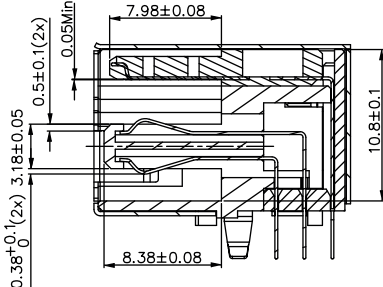
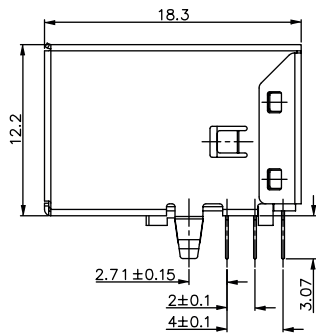
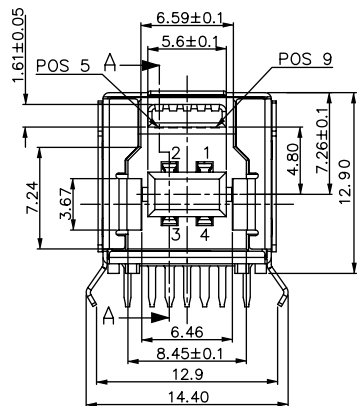
1

2

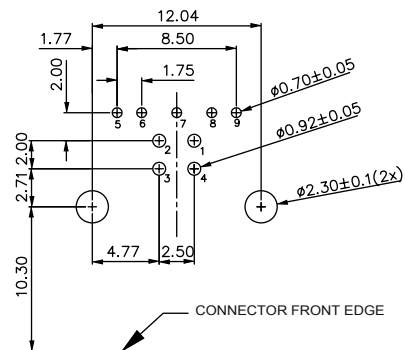
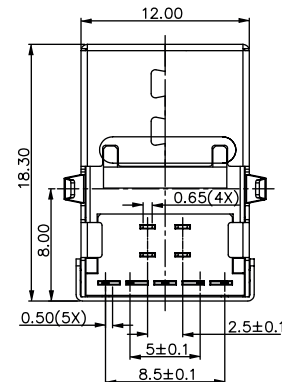
3

4

5



SECTION A - A



PCB LAYOUT * - COMPONENT VIEW

Pin NUMBER	SIGNAL NAME
1	VBUS
2	D-
3	D+
4	GND
5	StdB_SSTX-
6	StdB_SSTX+
7	GND_DRAIN
8	StdB_SSRX-
9	StdB_SSRX+
Shell	Shield

TECHNICAL CHARACTERISTICS

MATERIAL
 INSULATOR: LCP
 FLAMABILITY RATING: UL94-V0
 COLOR: BLUE
 CONTACT MATERIAL: PHOSPHORE BRONZE
 CONTACT TYPE: STAMPED
 CONTACT PLATING: UNDERPLATE 1.27 to 2.54 μm Ni
 CONTACT AREA 0.76 μm Gold
 SOLDER TAIL AREA 2.54 to 5.08 μm Matt Tin
 SHIELDING: BRASS Ni PLATED

ENVIRONMENTAL
 OPERATING TEMPERATURE: -20 up to +85°C
 COMPLIANCE: RoHS & LEAD FREE AS PER DIRECTIVE 2002/95/EC
 HALOGEN FREE COMPLIANT AS PER IEC 61249-2-21

ELECTRICAL
 CURRENT RATING:
 - PIN 1 & PIN 4 (Vbus & corresponding ground PIN) 1.8A Max
 - OTHER PINS 0.25 A Max
 WORKING VOLTAGE: 30Vac
 DIELECTRIC WITHSTANDING VOLTAGE: 100Vac/min
 INSULATION RESISTANCE: > 100MΩ
 CONTACT RESISTANCE:
 - PIN 1 & PIN 4: 30mΩ Max
 - OTHER PINS: 50mΩ Max

QUALITY CLASS: 5000 MATING CYCLES

STANDARD
 CERTIFIED: E323964 / MODEL NUMBER 692221030100

MECHANICAL
 INSERTION FORCE: 35.0N Max
 EXTRACTION FORCE: 10.0N min
 QUALITY CLASS: 5000 MATING CYCLES

SOLDERING
 WAVE SOLDERING ONLY AS PER JEDEC J-STD-020D

PACKAGING
 TRAY

* NOTE: THE RECOMMENDED PCB LAYOUT IS FOR AN OPTIMIZED RETENTION FORCE OF CONNECTOR ON PCB BUT IT IMPLIES INSERTION FORCE THAT A LOT OF PICK AND PLACE MACHINES ARE NOT ABLE TO HANDLE. THEREFORE IT MIGHT BE NECESSARY TO DRILL BIGGER HOLES FOR THE CLIPS. PLEASE CHECK THIS CAREFULLY.

RoHS Compliant			
G			
F	12-AUG-13	DWG	QL
E	19-JUL-13	INSULATOR	QL
D	04-NOV-11	INSULATOR	GG
C	21-SEP-11	NOTE	GG
B	10-MAY-11	UL	GG
A	30-SEP-10	PDF	JP
REV	DATE	FILE	BY

PROJECTION:	
APPROVAL: RJ	

GENERAL TOLERANCE	.X = +/- 0.2
	.XX = +/- 0.15
UNIT: MM	
SCALE:	
SHEET: 1/1	
DRAW: JOE	

DESCRIPTION: USB 3.0 HORIZONTAL TYPE B
WERI PART NO: 692 221 030 100



SIZE
A4