

FED. MFG. CODE 91929

702PB793

## CATALOG LISTING

PAGE 1 OF 1

REPLACES

PR-11647

RELEASE NO.

Year	Number of cases
2010	10
2011	15
2012	20
2013	25
2014	30
2015	35
2016	40
2017	45
2018	50
2019	55
2020	60
2021	65
2022	70
2023	75
2024	80
2025	85
2026	90
2027	95
2028	100
2029	105
2030	110
2031	115
2032	120
2033	125
2034	130
2035	135
2036	140
2037	145
2038	150
2039	155
2040	160
2041	165
2042	170
2043	175
2044	180
2045	185
2046	190
2047	195
2048	200
2049	205
2050	210
2051	215
2052	220
2053	225
2054	230
2055	235
2056	240
2057	245
2058	250
2059	255
2060	260
2061	265
2062	270
2063	275
2064	280
2065	285
2066	290
2067	295
2068	300
2069	305
2070	310
2071	315
2072	320
2073	325
2074	330
2075	335
2076	340
2077	345
2078	350
2079	355
2080	360
2081	365
2082	370
2083	375
2084	380
2085	385
2086	390
2087	395
2088	400
2089	405
2090	410
2091	415
2092	420
2093	425
2094	430
2095	435
2096	440
2097	445
2098	450
2099	455
2100	460

--	--

1888

CHECK

--	--

Journal Pre-proof

--	--

CHECK

13. III 98

<div style="display: flex; justify-content: space-between;"> <div> <p> <b>1</b>  <b>2</b>  <b>3</b>  <b>4</b>  <b>5</b>  <b>6</b>  <b>7</b>  <b>8</b>  <b>9</b>  <b>10</b>  <b>11</b>  <b>12</b>  <b>13</b>  <b>14</b>  <b>15</b>  <b>16</b>  <b>17</b>  <b>18</b>  <b>19</b>  <b>20</b>  <b>21</b>  <b>22</b>  <b>23</b>  <b>24</b>  <b>25</b>  <b>26</b>  <b>27</b>  <b>28</b>  <b>29</b>  <b>30</b>  <b>31</b>  <b>32</b>  <b>33</b>  <b>34</b>  <b>35</b>  <b>36</b>  <b>37</b>  <b>38</b>  <b>39</b>  <b>40</b>  <b>41</b>  <b>42</b>  <b>43</b>  <b>44</b>  <b>45</b>  <b>46</b>  <b>47</b>  <b>48</b>  <b>49</b>  <b>50</b>  <b>51</b>  <b>52</b>  <b>53</b>  <b>54</b>  <b>55</b>  <b>56</b>  <b>57</b>  <b>58</b>  <b>59</b>  <b>60</b>  <b>61</b>  <b>62</b>  <b>63</b>  <b>64</b>  <b>65</b>  <b>66</b>  <b>67</b>  <b>68</b>  <b>69</b>  <b>70</b>  <b>71</b>  <b>72</b>  <b>73</b>  <b>74</b>  <b>75</b>  <b>76</b>  <b>77</b>  <b>78</b>  <b>79</b>  <b>80</b>  <b>81</b>  <b>82</b>  <b>83</b>  <b>84</b>  <b>85</b>  <b>86</b>  <b>87</b>  <b>88</b>  <b>89</b>  <b>90</b>  <b>91</b>  <b>92</b>  <b>93</b>  <b>94</b>  <b>95</b>  <b>96</b>  <b>97</b>  <b>98</b>  <b>99</b>  <b>100</b> </p> </div> <div> <p> <b>101</b>  <b>102</b>  <b>103</b>  <b>104</b>  <b>105</b>  <b>106</b>  <b>107</b>  <b>108</b>  <b>109</b>  <b>110</b>  <b>111</b>  <b>112</b>  <b>113</b>  <b>114</b>  <b>115</b>  <b>116</b>  <b>117</b>  <b>118</b>  <b>119</b>  <b>120</b>  <b>121</b>  <b>122</b>  <b>123</b>  <b>124</b>  <b>125</b>  <b>126</b>  <b>127</b>  <b>128</b>  <b>129</b>  <b>130</b>  <b>131</b>  <b>132</b>  <b>133</b>  <b>134</b>  <b>135</b>  <b>136</b>  <b>137</b>  <b>138</b>  <b>139</b>  <b>140</b>  <b>141</b>  <b>142</b>  <b>143</b>  <b>144</b>  <b>145</b>  <b>146</b>  <b>147</b>  <b>148</b>  <b>149</b>  <b>150</b>  <b>151</b>  <b>152</b>  <b>153</b>  <b>154</b>  <b>155</b>  <b>156</b>  <b>157</b>  <b>158</b>  <b>159</b>  <b>160</b>  <b>161</b>  <b>162</b>  <b>163</b>  <b>164</b>  <b>165</b>  <b>166</b>  <b>167</b>  <b>168</b>  <b>169</b>  <b>170</b>  <b>171</b>  <b>172</b>  <b>173</b>  <b>174</b>  <b>175</b>  <b>176</b>  <b>177</b>  <b>178</b>  <b>179</b>  <b>180</b>  <b>181</b>  <b>182</b>  <b>183</b>  <b>184</b>  <b>185</b>  <b>186</b>  <b>187</b>  <b>188</b>  <b>189</b>  <b>190</b>  <b>191</b>  <b>192</b>  <b>193</b>  <b>194</b>  <b>195</b>  <b>196</b>  <b>197</b>  <b>198</b>  <b>199</b>  <b>200</b> </p> </div> </div>	<div style="display: flex; justify-content: space-between;"> <div> <p> <b>1</b>  <b>2</b>  <b>3</b>  <b>4</b>  <b>5</b>  <b>6</b>  <b>7</b>  <b>8</b>  <b>9</b>  <b>10</b>  <b>11</b>  <b>12</b>  <b>13</b>  <b>14</b>  <b>15</b>  <b>16</b>  <b>17</b>  <b>18</b>  <b>19</b>  <b>20</b>  <b>21</b>  <b>22</b>  <b>23</b>  <b>24</b>  <b>25</b>  <b>26</b>  <b>27</b>  <b>28</b>  <b>29</b>  <b>30</b>  <b>31</b>  <b>32</b>  <b>33</b>  <b>34</b>  <b>35</b>  <b>36</b>  <b>37</b>  <b>38</b>  <b>39</b>  <b>40</b>  <b>41</b>  <b>42</b>  <b>43</b>  <b>44</b>  <b>45</b>  <b>46</b>  <b>47</b>  <b>48</b>  <b>49</b>  <b>50</b>  <b>51</b>  <b>52</b>  <b>53</b>  <b>54</b>  <b>55</b>  <b>56</b>  <b>57</b>  <b>58</b>  <b>59</b>  <b>60</b>  <b>61</b>  <b>62</b>  <b>63</b>  <b>64</b>  <b>65</b>  <b>66</b>  <b>67</b>  <b>68</b>  <b>69</b>  <b>70</b>  <b>71</b>  <b>72</b>  <b>73</b>  <b>74</b>  <b>75</b>  <b>76</b>  <b>77</b>  <b>78</b>  <b>79</b>  <b>80</b>  <b>81</b>  <b>82</b>  <b>83</b>  <b>84</b>  <b>85</b>  <b>86</b>  <b>87</b>  <b>88</b>  <b>89</b>  <b>90</b>  <b>91</b>  <b>92</b>  <b>93</b>  <b>94</b>  <b>95</b>  <b>96</b>  <b>97</b>  <b>98</b>  <b>99</b>  <b>100</b> </p> </div> <div> <p> <b>101</b>  <b>102</b>  <b>103</b>  <b>104</b>  <b>105</b>  <b>106</b>  <b>107</b>  <b>108</b>  <b>109</b>  <b>110</b>  <b>111</b>  <b>112</b>  <b>113</b>  <b>114</b>  <b>115</b>  <b>116</b>  <b>117</b>  <b>118</b>  <b>119</b>  <b>120</b>  <b>121</b>  <b>122</b>  <b>123</b>  <b>124</b>  <b>125</b>  <b>126</b>  <b>127</b>  <b>128</b>  <b>129</b>  <b>130</b>  <b>131</b>  <b>132</b>  <b>133</b>  <b>134</b>  <b>135</b>  <b>136</b>  <b>137</b>  <b>138</b>  <b>139</b>  <b>140</b>  <b>141</b>  <b>142</b>  <b>143</b>  <b>144</b>  <b>145</b>  <b>146</b>  <b>147</b>  <b>148</b>  <b>149</b>  <b>150</b>  <b>151</b>  <b>152</b>  <b>153</b>  <b>154</b>  <b>155</b>  <b>156</b>  <b>157</b>  <b>158</b>  <b>159</b>  <b>160</b>  <b>161</b>  <b>162</b>  <b>163</b>  <b>164</b>  <b>165</b>  <b>166</b>  <b>167</b>  <b>168</b>  <b>169</b>  <b>170</b>  <b>171</b>  <b>172</b>  <b>173</b>  <b>174</b>  <b>175</b>  <b>176</b>  <b>177</b>  <b>178</b>  <b>179</b>  <b>180</b>  <b>181</b>  <b>182</b>  <b>183</b>  <b>184&lt;/</b></p></div></div>
---	---

✓

CHEC

36 1711

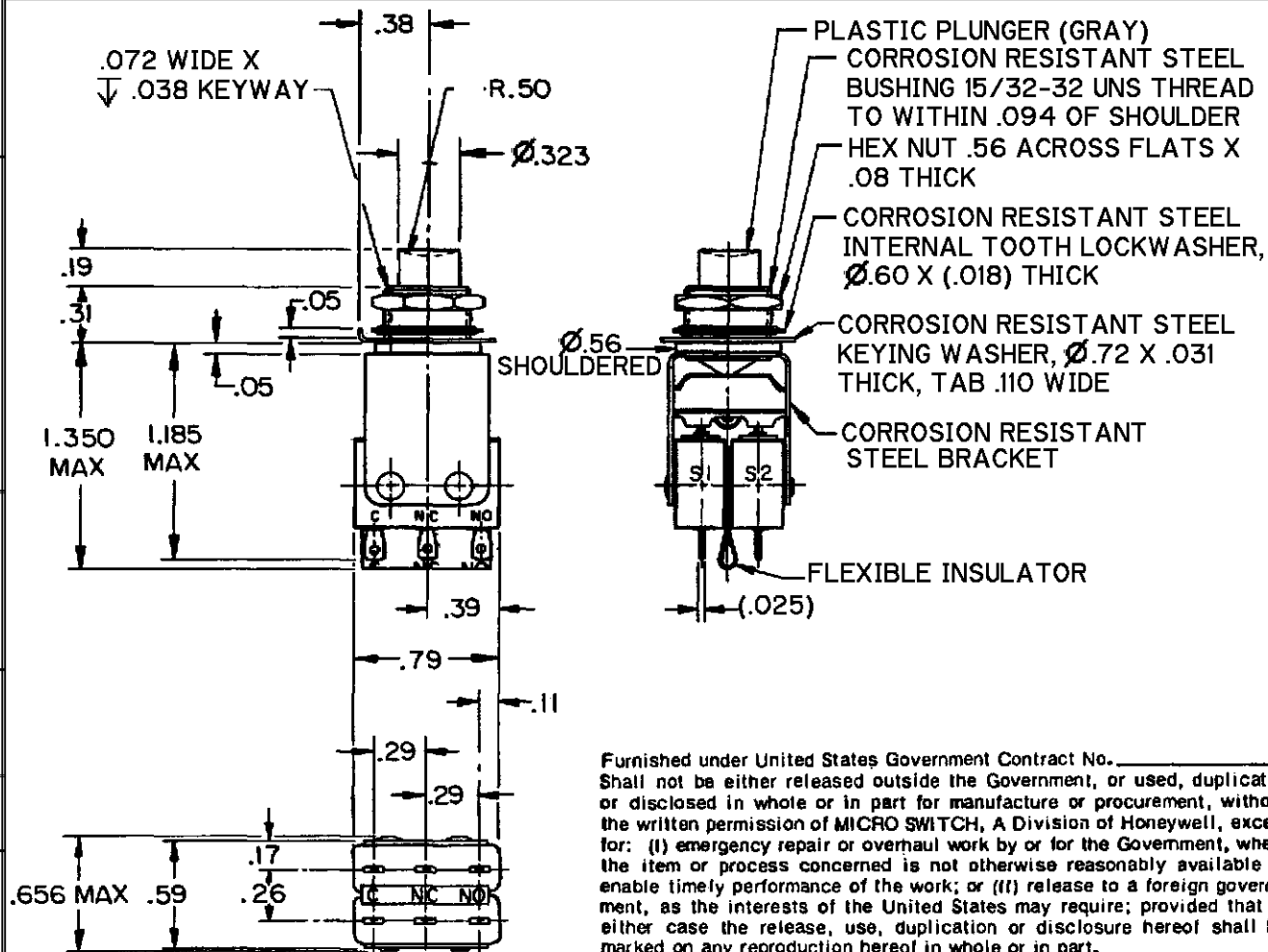
13.

A-11

—

FORMTEK

DRAWN



Furnished under United States Government Contract No. \_\_\_\_\_ .  
Shall not be either released outside the Government, or used, duplicated  
or disclosed in whole or in part for manufacture or procurement, without  
the written permission of MICRO SWITCH, A Division of Honeywell, except  
for: (i) emergency repair or overhaul work by or for the Government, where  
the item or process concerned is not otherwise reasonably available to  
enable timely performance of the work; or (ii) release to a foreign govern-  
ment, as the interests of the United States may require; provided that in  
either case the release, use, duplication or disclosure hereof shall be  
marked on any reproduction hereof in whole or in part.

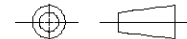
## NOTES

- 1 - UNIT INCLUDES 2X "HM TYPE" BASIC SWITCH  
2 - TERMINALS ARE PLATED FOR SOLDERING  
3 - SWITCHES DO NOT NECESSARILY OPERATE SIMULTANEOUSLY

## ANSI Y14.5M-1982 APPLIES

THIS DRAWING COVERS A PROPRIETARY ITEM AND IS THE PROPERTY OF MICRO SWITCH, A DIVISION OF HONEYWELL. THIS DRAWING IS NOT TO BE COPIED OR USED WITHOUT THE APPROVAL OF MICRO SWITCH.

### THIRD ANGLE PROJECTION



CHARACTERISTICS	ELECTRICAL DATA	SCALE	FULL	DO NOT SCALE PRINT
OPERATING FORCE - - - - - 2.0 LB APPROX	CONTACT ARRANGEMENT 2X S P D T	UNLESS OTHERWISE SPECIFIED TOLERANCES ARE		
TOTAL TRAVEL - - - - - .08 MIN	115 VOLTS AC RATING 400 CPS	ONE PLACE	(.0)	±.030
	INDUCTIVE-----2 AMPS	TWO PLACE	(.00)	±.015
	RESISTIVE-----4 AMPS	THREE PLACE	(.000)	±.005
	28 VOLTS DC RATING	ANGLES		±
	INDUCTIVE-----2 AMPS	WEIGHT	.063 LB APPROX	
	RESISTIVE-----4 AMPS			