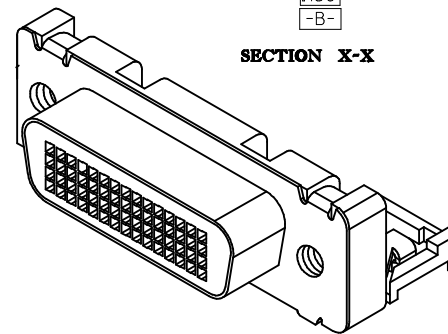
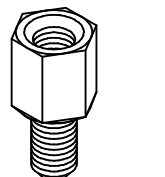
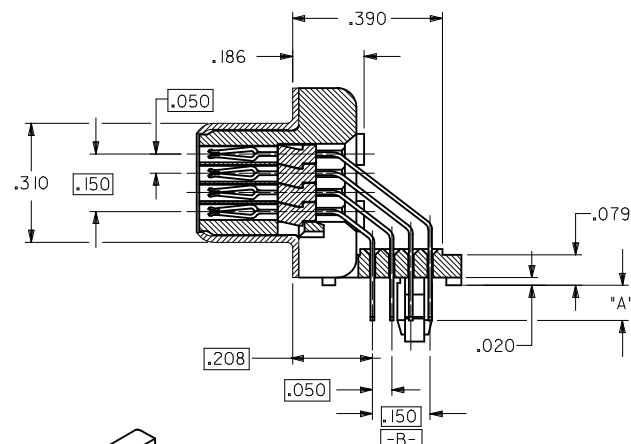
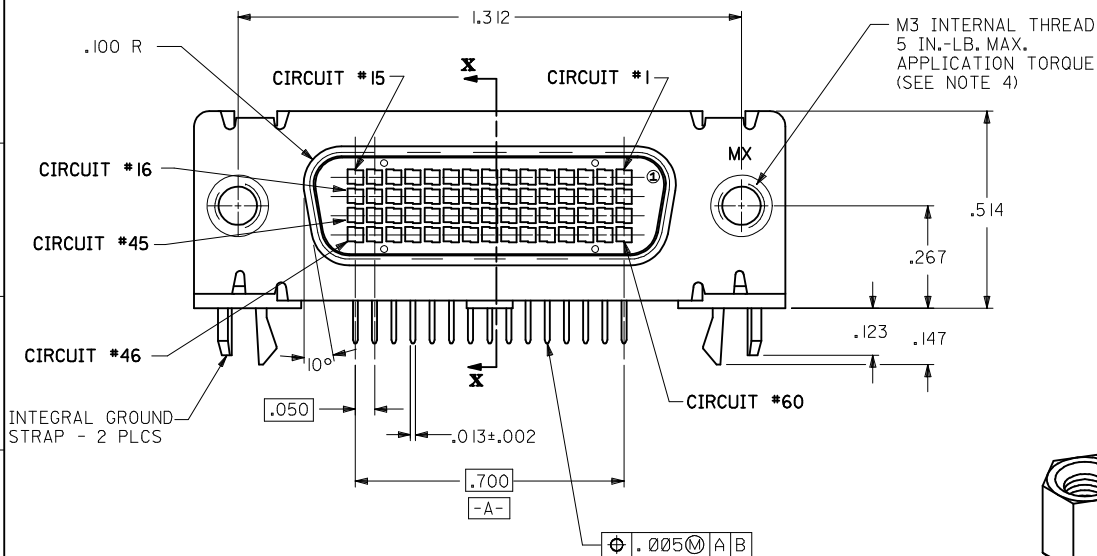


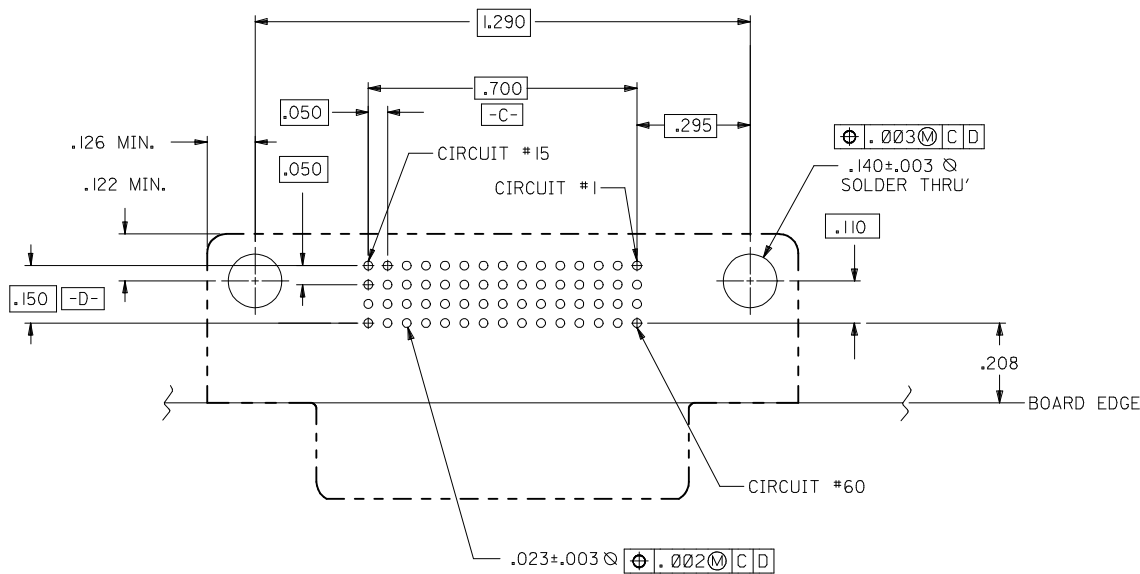
ITEM NUMBER	DIMENSION "A"	PLATING (SEE NOTE 2)	HEXAGONAL SCREWLOCKS PACKAGED WITH CONNECTORS	SCREWLOCK ITEM NUMBER (SEE SD-70982-****)	PACKAGING PER PACKAGING SPECIFICATION
70928-2000	.079±.010	30 GOLD	NO	_____	PK-70873-0291
70928-2001	.092±.010	30 GOLD	NO	_____	PK-70873-0291
70928-2002	.104±.010	30 GOLD	NO	_____	PK-70873-0291
70928-2003	.079±.010	30 GOLD	YES	70982-1003; 4-40 INTERNAL THD	PK-70873-0686
70928-2005	.079±.010	30 GOLD	YES	70982-1004; M-3 INTERNAL THD	PK-70873-0686
70928-2007	.125±.010	30 GOLD	NO	_____	PK-70873-0291
70928-2008	.092±.010	30 GOLD	YES	70982-1003; 4-40 INTERNAL THD	PK-70873-0686
70928-2009	.092±.010	GOLD FLASH	NO	_____	PK-70873-0291
70928-2010	.092±.010	GOLD FLASH	YES	70982-1003; 4-40 INTERNAL THD	PK-70873-0686



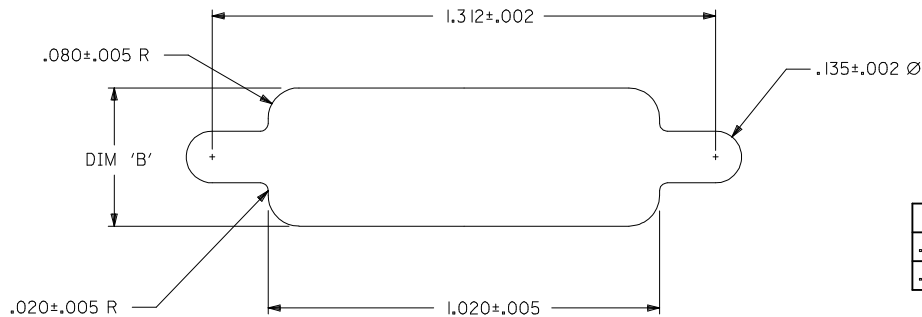
NOTES:

- MATERIALS:
HOUSING AND MOLDED STICK: GLASS FILLED POLYMER, 94V-0, COLOR BLACK.
TERMINALS: COPPER ALLOY .010±.0005 THICK.
OUTER SHELL: DEEP DRAWN STEEL, .016/(0.40) THICK.
HEXAGONAL SCREWLOCK: STEEL.
- PLATING:
TERMINALS (SEE CHART TO DETERMINE WHICH PART NUMBER HAS WHICH PLATING):
30 GOLD -- 30 MICRONS/(0.76 MICROMETERS) MINIMUM SELECTIVE GOLD (Au) IN THE CONTACT AREA,
100 MICRONS/(2.54 MICROMETERS) MINIMUM SELECTIVE TIN (Sn) IN PC TAIL AREA,
OVER NICKEL (Ni) UNDERPLATE OVERALL.
GOLD FLASH -- SELECTIVE GOLD (Au) FLASH IN THE CONTACT AREA,
100 MICRONS/(2.54 MICROMETERS) MINIMUM SELECTIVE TIN (Sn) IN PC TAIL AREA,
OVER NICKEL (Ni) UNDERPLATE OVERALL.
OUTERSHELL: 150 MICRONS/(3.81 MICROMETERS) MINIMUM TIN (Sn) OVER 50 MICRONS/(1.27 MICROMETERS) MINIMUM NICKEL (Ni) OVERALL.
- CONFORMS TO PRODUCT SPECIFICATION PS-70928.
- THREAD GAGE MAY REQUIRE UP TO 1 IN.-LB. OF TORQUE DURING GAGING PROCESS.
- PART COMPLIES WITH CLASS B OF COSMETIC SPECIFICATION PS-45499-002

MODIFY T/A GEO. EC NO: UCP2009-2635 DRWINGMORGAN 2009/04/29 CHKD:SDANNELLEY 2009/04/30 APPR:SMILLER 2009/04/30	QUALITY SYMBOLS ▽=0 ▽=0	GENERAL TOLERANCES (UNLESS SPECIFIED)		DIMENSION STYLE IN/MM		SCALE	DESIGN UNITS INCH	THIRD ANGLE PROJECTION		
		mm	INCH	DRAWN BY	DATE	TITLE	.050" PITCH LFH 60 CKT RIGHT ANGLE I/O RECEPTACLE			
		4 PLACES ± --- ± ---	3 PLACES ± --- ± .010	MOS	1993/02/08	CHECKED BY				
		2 PLACES ± 0.25 ± .015	1 PLACE ± 0.38 ± ---	CAB	1993/02/08	APPROVED BY	DATE	MOLEX INCORPORATED		MATERIAL NO. SEE TABLE DOCUMENT NO. SDA-70928-20** SHEET NO. 1 OF 2
ANGULAR ±1/2°		DRAFT WHERE APPLICABLE MUST REMAIN WITHIN DIMENSIONS		THIS DRAWING CONTAINS INFORMATION THAT IS PROPRIETARY TO MOLEX INCORPORATED AND SHOULD NOT BE USED WITHOUT WRITTEN PERMISSION						



COMPONENT SIDE
RECOMMENDED P.C.B. LAYOUT



RECOMMENDED PANEL CUT-OUT

DIM. 'B'	PANEL THICKNESS
.380±.005	.039
.420±.005	.064

SEE SHEET 1 EC NO: UCP2009-2635 DRWING: MORGAN 2009/04/29 CHKD: SPANIELLY 2009/04/30 APPR: MILLER 2009/04/30	QUALITY SYMBOLS ▽=0 ▽=0	GENERAL TOLERANCES (UNLESS SPECIFIED) <table border="1"> <thead> <tr> <th></th> <th>mm</th> <th>INCH</th> </tr> </thead> <tbody> <tr> <td>4 PLACES</td> <td>± .005</td> <td>± .0004</td> </tr> <tr> <td>3 PLACES</td> <td>± .004</td> <td>± .0003</td> </tr> <tr> <td>2 PLACES</td> <td>± 0.25</td> <td>± .010</td> </tr> <tr> <td>1 PLACE</td> <td>± 0.38</td> <td>± .015</td> </tr> </tbody> </table>		mm	INCH	4 PLACES	± .005	± .0004	3 PLACES	± .004	± .0003	2 PLACES	± 0.25	± .010	1 PLACE	± 0.38	± .015	DIMENSION STYLE IN/MM DRAWN BY: MOS DATE: 1993/02/08 CHECKED BY: CAB DATE: 1993/02/08 APPROVED BY: CAB DATE: 1993/02/08	SCALE: 4:1 DESIGN UNITS: INCH THIRD ANGLE PROJECTION	TITLE: .050" PITCH LFH 60 CKT RIGHT ANGLE I/O RECEPTACLE
		mm	INCH																	
	4 PLACES	± .005	± .0004																	
	3 PLACES	± .004	± .0003																	
2 PLACES	± 0.25	± .010																		
1 PLACE	± 0.38	± .015																		
MATERIAL NO. DOCUMENT NO.	SEE TABLE	MOLEX INCORPORATED	SHEET NO. 2 OF 2																	
DRAFT WHERE APPLICABLE MUST REMAIN WITHIN DIMENSIONS	THIS DRAWING CONTAINS INFORMATION THAT IS PROPRIETARY TO MOLEX INCORPORATED AND SHOULD NOT BE USED WITHOUT WRITTEN PERMISSION	SDA-70928-20**																		