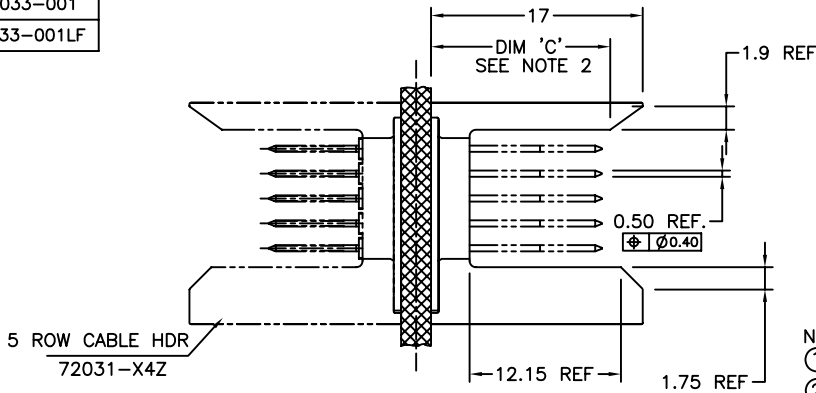
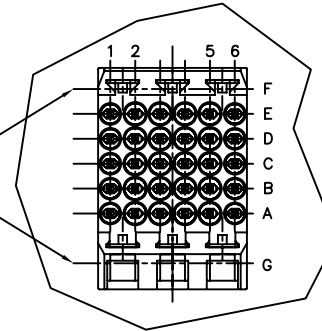


PRODUCT NO.
72033-001
72033-001LF



CENTERLINE OF GROUND PINS AT POSITIONS F2, F4, F6, G1, G3, AND G5

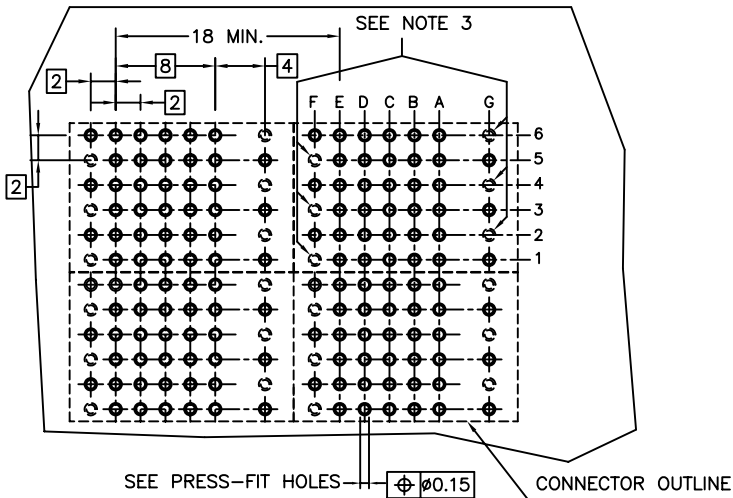


NOTES:

1. BODY MAT'L: ZINC ALLOY
2. WHEN USING 72031-X01 AND PCB THICKNESS IS:
2.4mm, DIM "C" IS 7.8±0.20
3.2mm, DIM "C" IS 7.2±0.20
4.0mm, DIM "C" IS 6.2±0.20
3. THESE HOLES ARE FOR GROUND PINS ON SHROUD POSITIONS F2, F4, F6, G1, G3, AND G5. OTHERS ARE USED WITH EE HEADER ON OPPOSITE SIDE OF BACKPLANE.
4. PRODUCT SHIPPED WITH WAFER NOT FULLY INSERTED.
5. PLATING ON TAIL:
PRESS-FIT TYPE
72033-001 IS SnPb
72033-001LF IS Sn (LEAD FREE)
6. PRODUCT SPECIFICATION:
GS-12-074
7. PRODUCT MARKING: (PART NUMBER & LOT CODE).
8. THESE PRODUCTS WHERE THE PART NUMBER ENDS IN "LF" MEET THE EUROPEAN UNION DIRECTIVES AND OTHER COUNTRY REGULATIONS AS DESCRIBED IN GS-22-008.

ALL PRODUCTS WILL WITHSTAND EXPOSURE TO 260°C FOR 60 SECONDS IN A CONVECTION, INFAR-RED OR VAPOR PHASE REFLOW OVEN.

9. FOR LEAD FREE PART NUMBERS ADD "LF" SUFFIX. EXAMPLE: 72033-001LF.



HOLE DIAMETER AFTER PLATING	0.65-0.80
DRILLED HOLE	0.81-0.86 (0.85 DRILL)
COPPER PLATING	0.025 - 0.05
SnPb PLATING	0.005-0.015

SEE DRAWING 58351 FOR OTHER OPTIONS

A	V70116	SAR	970127
B	V70751	MDF	5/29/97
C	V94035	MDF	10/20/99
D	V06-0106	JRV	3/20/06
-	-	-	-
-	-	-	-

mat'l. code				surface		tolerance		projection		product family	
NOTE 1				ASME Y14.5		ASME Y14.5		MM		METRAL (tm)	
ltr	ec'n no	dr	date	tolerances unless otherwise specified						title	
B	C70751	MDF	1997-05-29	angles	XXx3					CABLE HEADER SHROUD	
C	V94035	MDF	1999-10-20	flat	XXx3					5 ROW, WITH GROUND PINS	
D	V06-0106	JRV	2006-03-20	0° ±2'	XXX:051			scale 2:1		dwg no	
E	V06-0606	JRV	2006-06-21	dr	S. ROYER	1997-01-27					sheet 1 of 1
				engr	R. DOUTRICH	1997-01-27					size
				chr	R. DOUTRICH	1997-01-27					A4
				appd	R. DOUTRICH	1997-01-27					type
sheet index		revision sheet	E							CUSTOMER Drawing	
		1									