

MATERIALS AND FINISHES

COUPLING SLEEVE: BRASS
PLATED NICKEL

BODY: BRASS
PLATED TRI-M3

RETENTION CAP: BRASS
PLATED TRI-M3

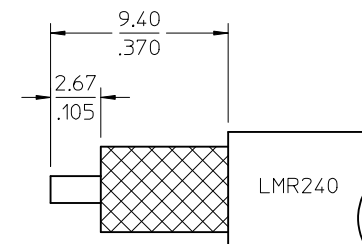
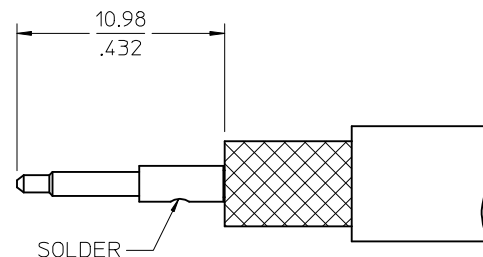
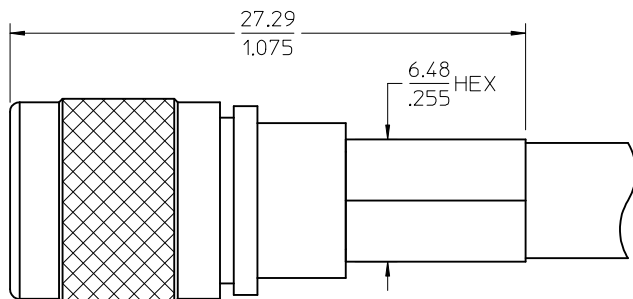
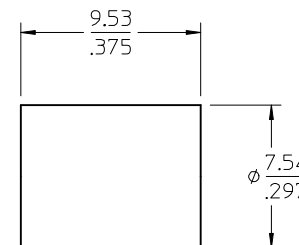
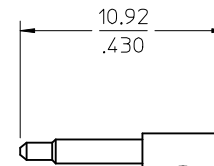
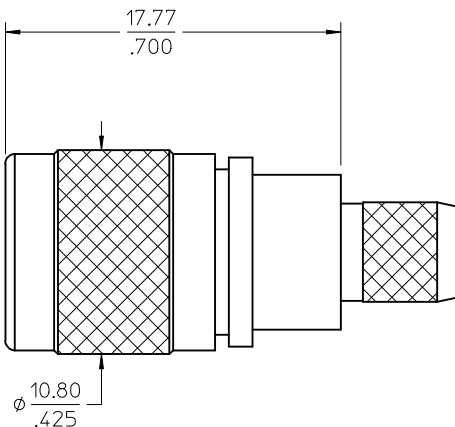
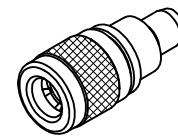
INSULATORS: TEFLON

RETENTION SPRING: STAINLESS STEEL
PASSIVATED

GROUND SPRING: BERYLLIUM COPPER
PLATED GOLD

CONTACT: BRASS
PLATED GOLD

CRIMP TUBE: BRASS
PLATED NICKEL



| | |
|------------|-------------|
| 73254-0071 | ONE PER BAG |
| 73254-0070 | BULK |
| PART NO | PACKAGING |

CHG:
UPDATED PLATING
FOR GROUND SPRING
PER RF13-E042

EC NO: URF2013-0196
DRWN:RYEH
CHKD:
APPR:MHUANG

2012/09/27
2012/10/15
DESCRIPTION
REV

QUALITY
SYMBOLS
▽=0
▽=0
▽=0

GENERAL TOLERANCES
(UNLESS SPECIFIED)
mm INCH
4 PLACES ± --- ± ---
3 PLACES ± --- ± ---
2 PLACES ± --- ± ---
1 PLACE ± --- ± ---
0 PLACE ± ±
ANGULAR ± 2 °
DRAFT WHERE APPLICABLE
MUST REMAIN
WITHIN DIMENSIONS

DIMENSION STYLE
MM/IN
DRAWN BY DATE
SSS 2003/10/01
CHECKED BY DATE
TEF 2003/10/01
APPROVED BY DATE
GMH 2003/10/01
MATERIAL NO.
SEE TABLE
SIZE C

SCALE
5:1
DESIGN UNITS
INCH
THIRD ANGLE
PROJECTION
TITLE
QMA PLUG STRAIGHT
LMR240 50 OHM
QMA-PC, EWR-4121
molex
DOCUMENT NO.
SD-73254-007
SHEET NO.
1 OF 1