

PRODUCT NUMBER

73304-XXXLF

## PLATING OPTION

1= GXT 0.76  $\mu\text{m}$   
 3= GOLD 0.76  $\mu\text{m}$   
 5= GOLD 1.27  $\mu\text{m}$

## PACKAGE OPTION

1= TAPE ON REEL  
 2= TUBE  
 3= TAPE ON REEL  
 IN PLASTIC BAG

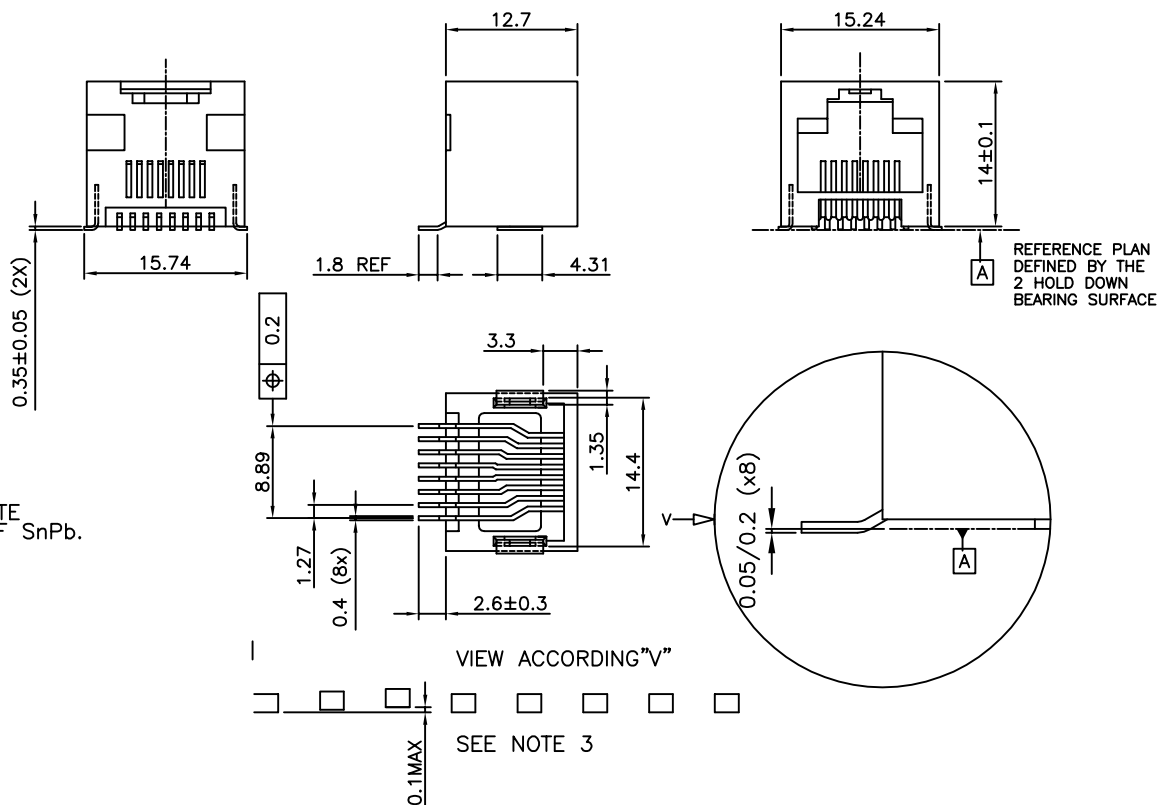
## TERMINAL LOADING

1= FULLY LOADED  
 2= POS 1,2,7,8  
 3= POS 3,4,5,6




WHEN NEEDED, SUFFIX LETTER "LF"  
 INDICATES THE PRODUCT IS RoHS  
 COMPATIBLE, SEE NOTE 4.

## NOTES:

- 1- MATERIAL: HOUSING: HIGH TEMP. NYLON, COLOUR BLACK.  
 TERMINAL: PHOSPHOR BRONZE.  
 2 - PLATING: CONTACT AREA: SEE TABLE.  
 SOLDER TAIL : 90/10 SnPb 2 $\mu\text{m}$  MIN.  
 WHEN SUFFIX "LF" IS REQUIRED, 2 $\mu\text{m}$  MIN MATTE  
 TIN OVER 1.27 MIN Ni IS SUPPLIED INSTEAD OF SnPb.  
 NO RAW EDGES EXCEPT SOLDER TAIL TIPS  
 3 - SOLDER TAILS COPLANARITY : 0.1 mm  
 4 - RoHS COMPATIBLE PRODUCT SPECIFICATIONS  
 a - PLATING:  
 - "LF" MEANS THE PRODUCT IS LEAD-FREE,  
 2 $\mu\text{m}$  MINIMUM MATTE TIN OVER 1.27 $\mu\text{m}$   
 MINIMUM NICKEL UNDERPLATE.  
 b - MANUFACTURING PROCESS COMPATIBILITY  
 - THE HOUSING WILL WITHSTAND EXPOSURE TO  
 245°C PEAK TEMPERATURE FOR 30 SECONDS  
 MAX IN A CONVECTION, INFRA-RED OR VAPOR  
 PHASE OR REFLOW OVEN.  
 c - LABELING:  
 - MEETS PACKAGING SPECS AS PER GS-14-920  
 d - LEGAL STATEMENT: SEE GS-22-008  
 5 - PACKAGING FOR OPTION 3 : EACH REEL IS WRAPPED INTO A PLASTIC BAG  
 TO PROTECT FROM MOISTURE DURING STACKING TIME.

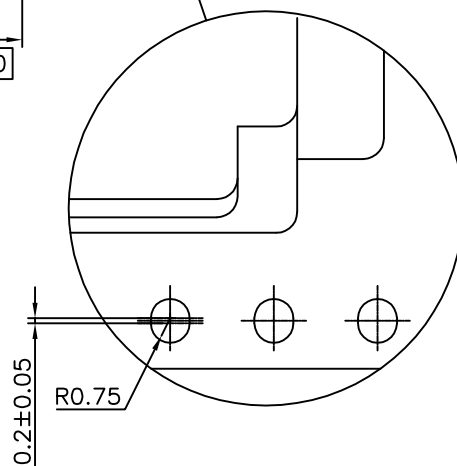
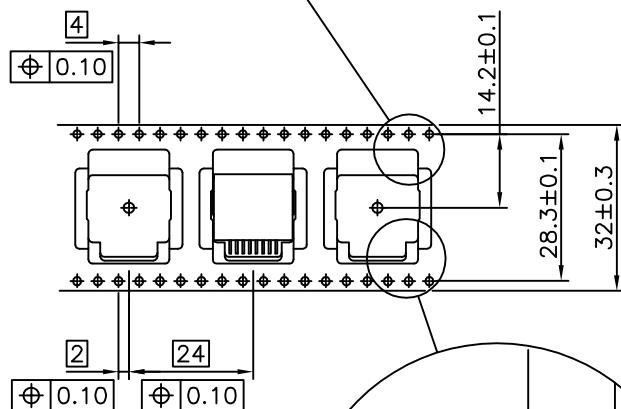
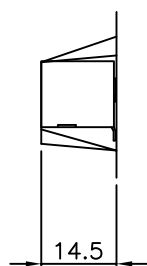
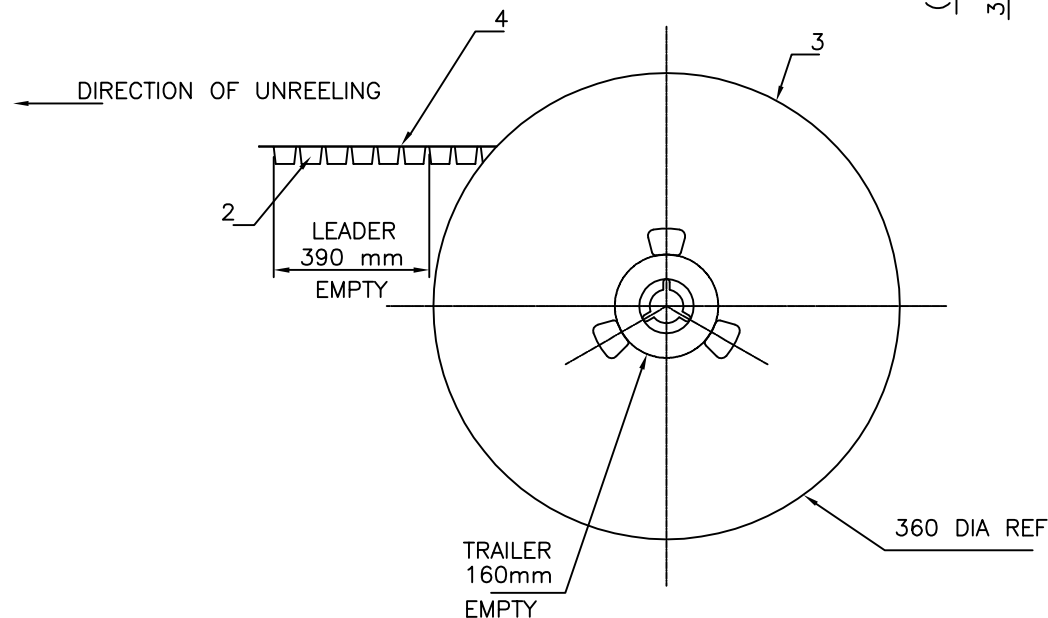
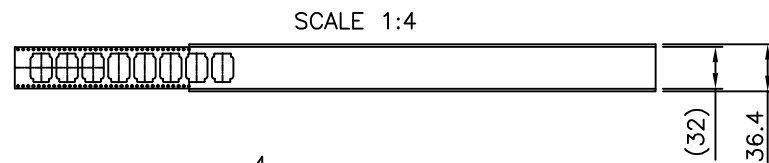
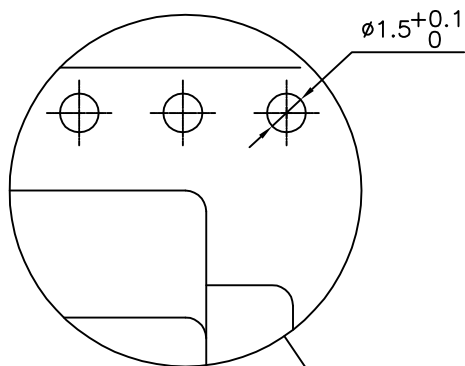


## CUSTOMER COPY FOR REFERENCE ONLY

mat'l. code				surface ISO 1302		tolerance ISO 406 ISO 1101		projection 		product family MOD JACK				
ltr	ecn no	dr	date	tolerances unless otherwise specified					title					
H	F06-0240	DLE	06.07.18	angles	linear	±0.13			SMT RA JACK 8 POS OUTSIDE					
J	F09-0070	LSA	02.07.23											
K	B-15798	JFA	13.09.09			±2'								
				dr	D LEGRAND	03.01.27				dwg no		sheet 1 of 3		size
E	F03020	DLE	03.01.27	engr	F TISSERAND	03.01.27				73304		A3		
F	F04-0363	DLE	04.10.18	chr	JF NOTTEAU	03.01.27								
G	F05-0247	DLE	05.09.12	appd	F.TI	03.01.27				type		CUSTOMER Drawing		
sheet	revision	K	E	B										
index	sheet	1	2	3										

PRODUCT NUMBER  
SEE SHEET 1

LTR	PART NAME	QTY
1	PRODUCT	230
2	TAPE	1
3	REEL	1
4	COVER TAPE	1



1- IN ACCORDANCE WITH EIA-481 AND IEC 296-3

### CUSTOMER COPY FOR REFERENCE ONLY

mat'l. code				surface ISO 1302	tolerance ISO 406 ISO 1101	projection	product family MOD-JACK
ltr	ecn no	dr	date	tolerances unless otherwise specified			title
D	D80620	DLE	98.11.26	angles	linear	mm	SMT RA JACK
E	F06-0240	DLE	06.07.18			scale 2:1	8 POS. OUTSIDE
				dr	D LEGRAND	04.10.18	dwg no
				enr	P NIZZI	04.10.18	sheet 2 of 3
				chr	D LEGRAND	04.10.18	size
				app	P NIZZI	04.10.18	A3
sheet index	revision sheet						type
							CUSTOMER Drawing



A

B

C

D

A

B

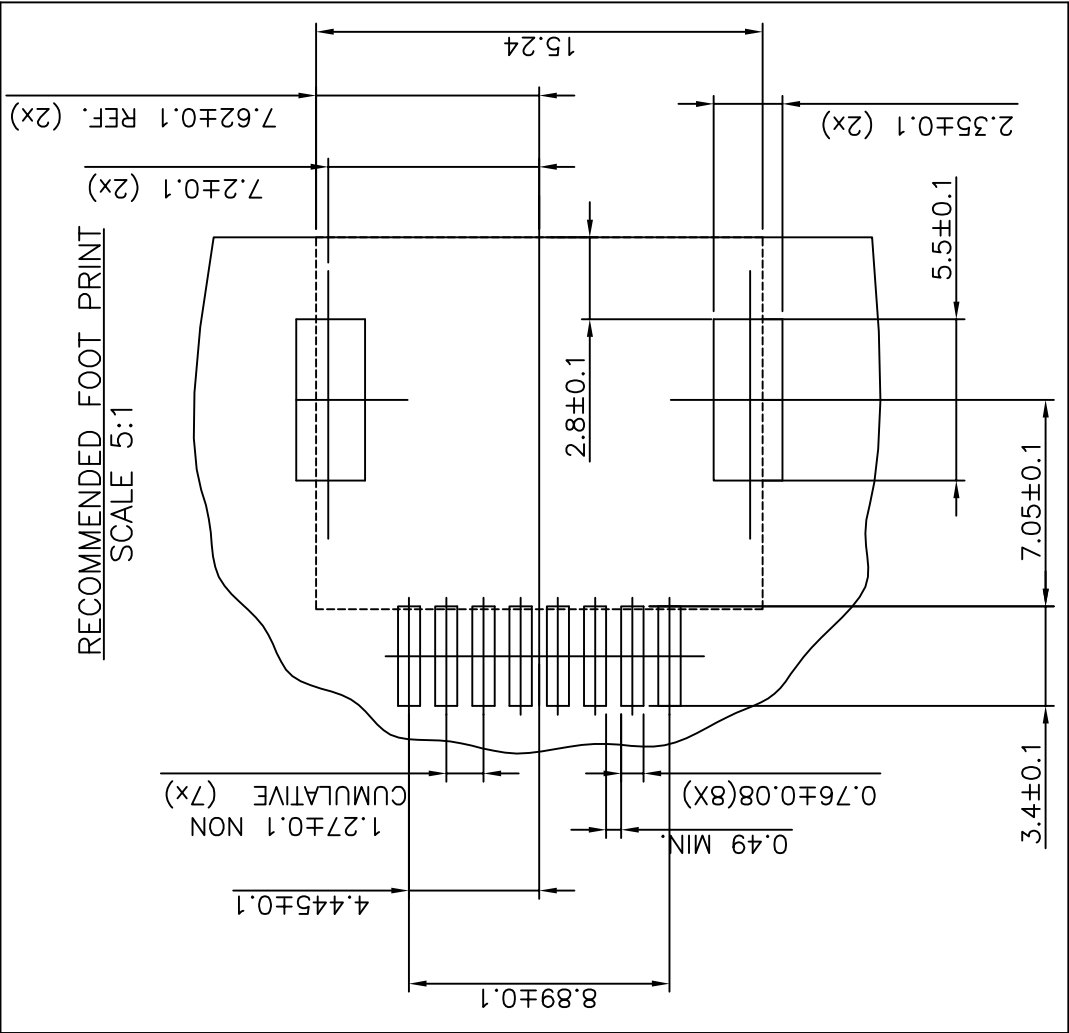
C

D



CUSTOMER COPY FOR REFERENCE ONLY

mat'l. code				surface	tolerance		projection	product family	title	
				ISO 1302	ISO 406	ISO 1101		MOD JACK	SMT RA JACK	
ltr	ecn no	dr	date	tolerances unless otherwise specified			mm	8 POS OUTSIDE		
A	F04-0363	DLE	04.10.18	linear	±0.13					
B	F06-0240	DLE	06.07.18							
				±2°			scale 2:1			
				dr	D	LEGRAND	04.10.18	dwg no	sheet 3 of -	size
				engr	P	NIZZI	04.10.18	73304		A4
				chr	D	LEGRAND	04.10.18			
				appd	P.NZ		04.10.18			
sheet index	revision	sheet						CUSTOMER Drawing		



4.445±0.1  
1.27±0.1 NON  
CUMULATIVE (7x)  
0.49 MIN.  
0.76±0.08(8X)

7.22±0.1 (2x)  
7.62±0.1 REF. (2x)

2.8±0.1

5.5±0.1

7.05±0.1

3.4±0.1

15.24

8.89±0.1