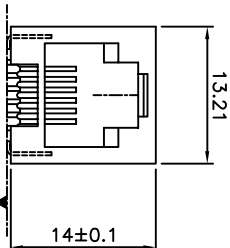
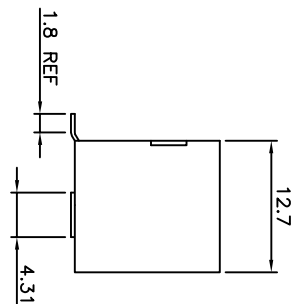
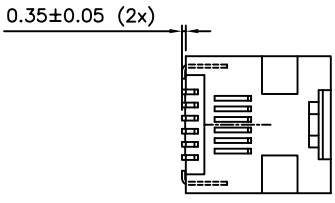


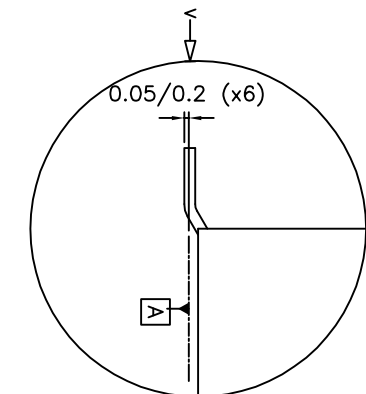
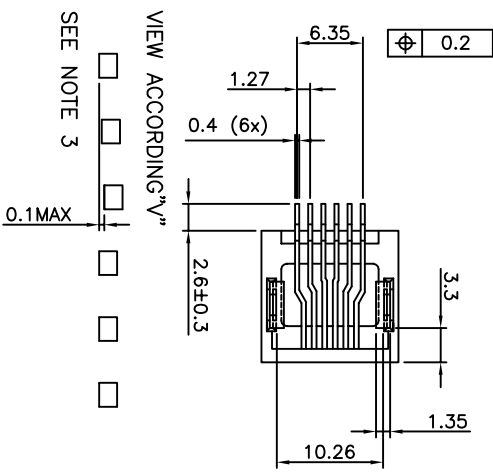
PRODUCT NUMBER  
73326-XXXXLF

PLATING OPTION	PACKAGE OPTION	TERMINAL LOADING
1 = GXT 0.76 µm	1 = TAPE ON REEL	1 = FULLY LOADED
3 = GOLD 0.76 µm	2 = TUBE	2 = POS 2,3,4,5
5 = GOLD 1.27 µm	3 = TAPE ON REEL IN PLASTIC BAG	3 = POS 1,2,5,6

WHEN NEEDED, SUFFIX LETTER "LF" INDICATES THE PRODUCT IS ROHS COMPATIBLE, SEE NOTE 4.



REFERENCE PLAN  
DEFINED BY THE  
2 HOLD DOWN  
BEARING SURFACE



NOTES:  
1 - MATERIAL: HOUSING: HIGH TEMP. NYLON, COLOUR BLACK.  
TERMINAL: PHOSPHOR BRONZE.

2 - PLATING: CONTACT AREA: SEE TABLE.  
SOLDER TAIL : 90/10 SnPb 2µm MIN.  
WHEN SUFFIX "LF" IS REQUIRED, 2µm MIN MATTE TIN OVER 1.27 MIN Ni IS SUPPLIED INSTEAD OF SnPb.  
NO RAW EDGES EXCEPT SOLDER TAIL TIPS

3 - SOLDER TAILS COPLANARITY : 0.1 mm

4 - ROHS COMPATIBLE PRODUCT SPECIFICATIONS

5 - PLATING:  
- "LF" MEANS THE PRODUCT IS LEAD-FREE, 2µm MINIMUM MATTE TIN OVER 1.27µm MINIMUM NICKEL UNDERPLATE.

6 - MANUFACTURING PROCESS COMPATIBILITY  
- THE HOUSING WILL WITHSTAND EXPOSURE TO 245°C PEAK TEMPERATURE FOR 30 SECONDS MAX IN A CONVECTION, INFRA-RED OR VAPOR PHASE OR REFLOW OVEN.

7 - LABELING:  
- MEETS PACKAGING SPECS AS PER GS-14-920

8 - LEGAL STATEMENT: SEE GS-22-008

9 - PACKAGING FOR OPTION 3 : EACH REEL IS WRAPPED INTO A PLASTIC BAG TO PROTECT FROM MOISTURE DURING STACKING TIME.

CUSTOMER COPY FOR REFERENCE ONLY

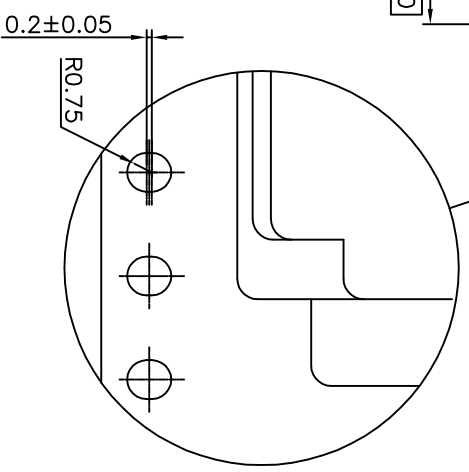
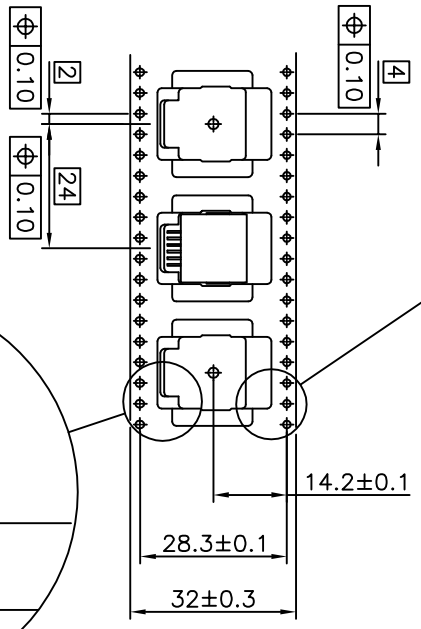
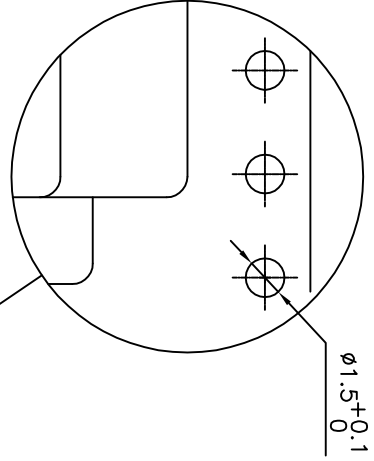
mat'l. code	ISO 1302	tolerance	ISO 406	ISO 1001	projection	mm	scale	2:1
tr	ecn no	dr	date	ISO 1302	tolerance unless otherwise specified	±0.13		
H	F06-0244	DLE	06.07.18		linear			
J	F09-0070	LSA	09.07.23		linear			
K	B-15798	JFA	13.09.09		linear			
E	F03020	DLE	03.01.27	engr	P NIZZI	04.10.18		
F	F04-0363	DLE	04.10.18	chr	D LEGRAND	04.10.18		
G	F05-0247	DLE	05.09.12	qppd	P NZ	04.10.18		
sheet	revision	K	E	B				
index	sheet	1	2	3				

title  
SMT RA JACK  
product family  
MOD JACK  
6 POS INSIDE

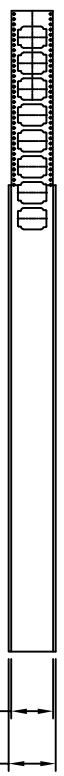
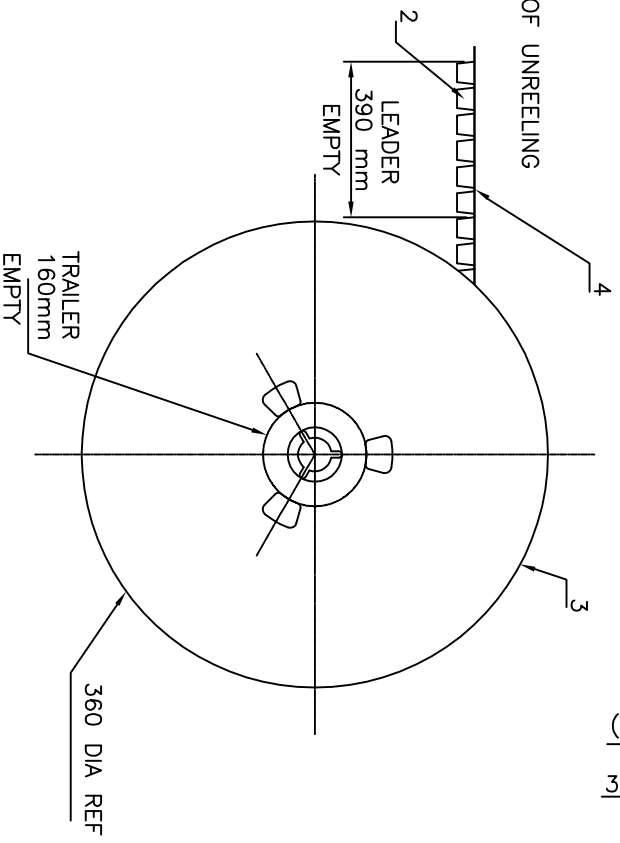
dwg no  
73326  
sheet 1 of 3  
size  
A3  
CUSTOMER Drawing

PRODUCT NUMBER  
SEE SHEET 1

LTR	PART NAME	QTY
1	PRODUCT	230
2	TAPE	1
3	REEL	1
4	COVER TAPE	1



DIRECTION OF UNREELING

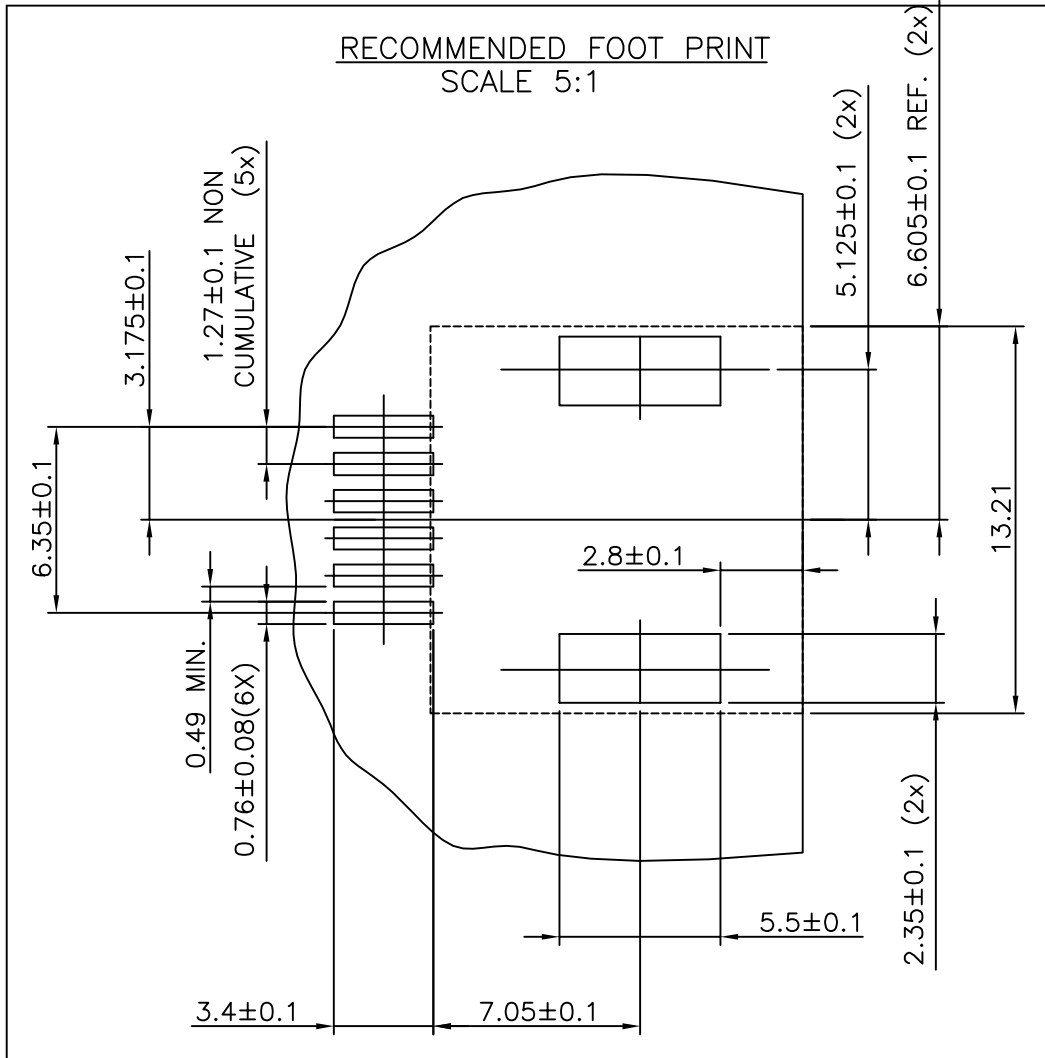


SCALE 1:4

1 - IN ACCORDANCE WITH EIA-481 AND IEC 296-3

CUSTOMER COPY FOR REFERENCE ONLY

mat'l. code	surface	tolerance	projection	product family
	ISO 1302	ISO 406 ISO 1101	mm	MOD-JACK
thr ecn no	dr date	tolerances unless otherwise specified	scale 1:1	title
D F80620	DLE 98.11.26			SMT RA JACK
E F06-0240	DLE 06.07.18	linear		6 POS. INSIDE
				dwg no
				73326
				sheet 2 of 3
				A3
				CUSTOMER Drawing
sheet	revision			
index	sheet			



FCIconnect.com

CUSTOMER COPY FOR REFERENCE ONLY

mat'l. code				surface ISO 1302 <input checked="" type="checkbox"/>		tolerance ISO 406 ISO 1101		projection 		product family MOD JACK			
ltr	ecn no	dr	date	tolerances unless otherwise specified		±0.13		mm 		title SMT RA JACK 6 POS INSIDE			
A	F04-0363	DLE	04.10.18	angles				scale 2:1		dwg no		sheet 3 of -	size
B	F06-0240	DLE	06.07.18	linear		±2°				73326			A4
				dr	D LEGRAND	04.10.18				type		CUSTOMER Drawing	
				engr	P NIZZI	04.10.18							
				chr	D LEGRAND	04.10.18							
				appd	P NZ	04.10.18							
sheet index	revision sheet												