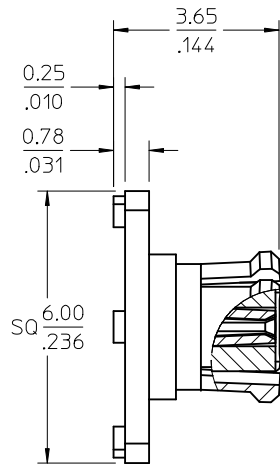


MATERIALS AND FINISHES

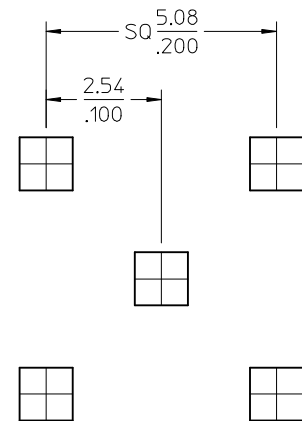
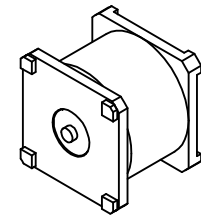
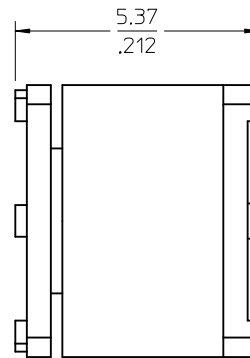
BODY BRASS
PLATED GOLD

CENTER CONTACT BRASS
PLATED GOLD

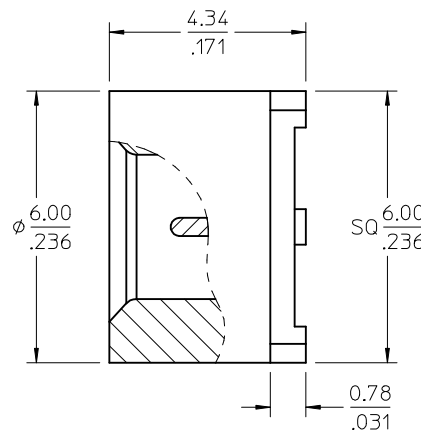
INSULATOR TEFLON



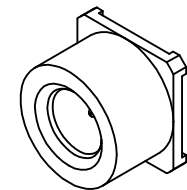
MOD SMP JACK
(MOLEX 73415-5300)



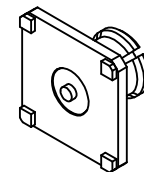
RECOMMENDED PCB LAYOUT



MOD SMP PLUG
(MOLEX 73415-5590)



MOD SMP PLUG
(MOLEX 73415-5590)



MOD SMP JACK
(MOLEX 73415-5300)

73415-5592	TAPE AND REEL PACKAGING WITH KAPTON TAPE
73415-5591	TAPE & REEL PACKAGING
73415-5590	INDIVIDUAL PACKAGING
PART NO.	DESCRIPTION

CHG: ADDED VIEWS TO DIFFERENTIATE BETWEEN -5590 & -5300 PER RF14-E050	EC NO: URF2014-0232	2013/10/15
	DRWNR:YEH	2013/10/15
CHKD:	APPR:MHUANG	2013/10/23
REV	DESCRIPTION	QUALITY SYMBOLS
A3		▽=0 ▽=0 ▽=0

GENERAL TOLERANCES (UNLESS SPECIFIED)	
	mm INCH
4 PLACES	± .005 ± .002
3 PLACES	± .005 ± .002
2 PLACES	± .005 ± .002
1 PLACE	± .005 ± .002
0 PLACE	± .005 ± .002
ANGULAR ± 2°	
DRAFT WHERE APPLICABLE MUST REMAIN WITHIN DIMENSIONS	

DIMENSION STYLE	
MM/IN	
DRAWN BY	DATE
JM	2005/10/06
CHECKED BY	DATE
JM	2005/10/06
APPROVED BY	DATE
JDW	2005/10/06
MATERIAL NO.	DOCUMENT NO.
SEE TABLE	SD-73415-559

SCALE	DESIGN UNITS	THIRD ANGLE PROJECTION
12:1	METRIC	☉
TITLE		
MOD SMP PLUG, PCB, SMT		
50 OHMS, EWR-2926		
SMP-P/PCB/SMT		
molex		
DOCUMENT NO.		SHEET NO.
SD-73415-559		1 OF 1
THIS DRAWING CONTAINS INFORMATION THAT IS PROPRIETARY TO MOLEX INCORPORATED AND SHOULD NOT BE USED WITHOUT WRITTEN PERMISSION		