

NOTES:

1. MATERIAL:
 HOUSING -LIQUID CRYSTAL POLYMER (LCP),
 GLASS-FILLED, UL 94V-0, COLOR BLACK.
 SIGNAL PIN & SHIELD -HIGH PERFORMANCE COPPER ALLOY.
2. FINISHES:
 CONTACT AREA: SELECTIVE GOLD (Au)
 PCB TAILS: SELECTIVE MATTE TIN (Sn)
 NICKEL (Ni) OVERALL.
3. THIS PART CONFORMS TO MOLEX PRODUCT SPECIFICATION PS-74031-999.
4. FOR MIXED CONTACT MATING LENGTHS CONSULT MOLEX FOR AVAILABILITY.
5. FOR SPECIFIC PART NUMBERS AND MATING INFORMATION REFER TO SHEET 2.
6. PACKAGE PER PK-74060-003.
7. EITHER MARK PART NUMBER AND DATE CODE APPROXIMATELY WHERE SHOWN OR PLACE LABEL ON THE TUBE.
8. MAPS (MOLEX ADVANCED PLATING SYSTEM).

THE PRIMARY CARTON WITH A LABEL STATING "ELV AND RoHS COMPLIANT" IS LEAD FREE. CARTONS WITHOUT THIS LABEL MAY CONTAIN LEAD.

LEAD FREE CONVERSION EC NO: UCP2013-0687 DRAWINGS 2012/08/24 CHKD:MWLF 2012/11/27 APPR:SMILLER 2012/12/14	QUALITY SYMBOLS 	GENERAL TOLERANCES (UNLESS SPECIFIED)		DIMENSION STYLE MM ONLY	SCALE 2.5:1	DESIGN UNITS METRIC	THIRD ANGLE PROJECTION	
		mm INCH	DRAWN BY MOWANG	DATE 2001/01/22	TITLE HSD SALES ASSEMBLY 8 ROW OPEN END BACKPLANE			
		4 PLACES ± --- ± --- 3 PLACES ± --- ± --- 2 PLACES ± --- ± --- 1 PLACE ± --- ± --- 0 PLACE ± ±	CHECKED BY JLAURX	DATE 2001/01/23				
		ANGULAR ±1/2° DRAFT WHERE APPLICABLE MUST REMAIN WITHIN DIMENSIONS	APPROVED BY CBI XLER	DATE 2001/01/24	MATERIAL NO. SEE SHEET 2	DOCUMENT NO. SD-74649-002	SHEET NO. 1 OF 2	

THIS DRAWING CONTAINS INFORMATION THAT IS PROPRIETARY TO MOLEX. INCORPORATED AND SHOULD NOT BE USED WITHOUT WRITTEN PERMISSION

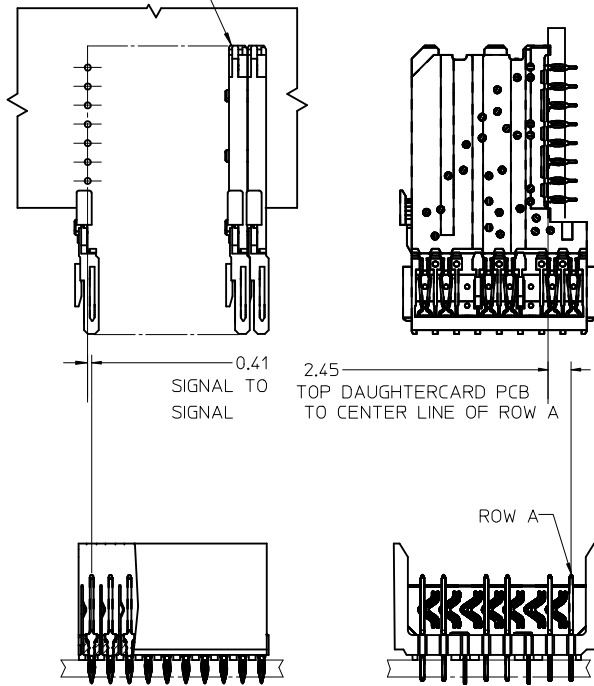
MATERIAL NUMBER ASSIGNMENT

74649-**-0*

SEE TABLE

- 10 = 10 COLUMN MATTE TIN (FORMERLY TIN/LEAD)
- 25 = 25 COLUMN MATTE TIN (FORMERLY TIN/LEAD)
- 60 = 10 COLUMN MATTE TIN (MAPS)
- 75 = 25 COLUMN MATTE TIN (MAPS)
- 90 = 10 COLUMN MATTE TIN
- 85 = 25 COLUMN MATTE TIN

DAUGHTERCARD
CONNECTOR SIDE



PART NUMBER	COLUMN	NUMBER OF SIGNAL PIN	NUMBER OF SHIELD	A	B	M	GOLD THICKNESS MICROMETER	TIN THICKNESS MICROMETER
74649-6001							0.25 MAPS	0.76-1.52
74649-*001	10	60	10	20.00	18.00	4.75	0.76	
74649-*006							1.27	
74649-7501							0.25 MAPS	
74649-*501	25	150	25	50.00	48.00	6.25	0.76	
74649-*506							1.27	
74649-6002							0.25 MAPS	
74649-*002	10	60	10	20.00	18.00	4.25	0.76	
74649-*007							1.27	
74649-7502							0.25 MAPS	
74649-*502	25	150	25	50.00	48.00	5.15	0.76	
74649-*507							1.27	
74649-6003							0.25 MAPS	
74649-*003	10	60	10	20.00	18.00	4.25	0.76	
74649-*008							1.27	
74649-7503							0.25 MAPS	
74649-*503	25	150	25	50.00	48.00	5.15	0.76	
74649-*508							1.27	
74649-6004							0.25 MAPS	
74649-*004	10	60	10	20.00	18.00	4.25	0.76	
74649-*009							1.27	
74649-7504							0.25 MAPS	
74649-*504	25	150	25	50.00	48.00	4.25	0.76	
74649-*509							1.27	

SEE SHEET 1 EC NO: UCP2013-0687 DRAWINGS 2012/08/24 CHKD:MMWLF 2012/11/27 APPR:SMILLER 2012/12/14 REV DESCRIPTION	QUALITY SYMBOLS	GENERAL TOLERANCES (UNLESS SPECIFIED)	DIMENSION STYLE	SCALE	DESIGN UNITS	THIRD ANGLE PROJECTION
	▽=0	mm INCH	MM ONLY	2.5:1	METRIC	
	▽=0	4 PLACES ± --- ± ---	DRAWN BY DATE	TITLE		
	▽=0	3 PLACES ± --- ± ---	MOWANG 2001/01/22	HSD SALES ASSEMBLY		
	2 PLACES ± --- ± ---	CHECKED BY DATE	8 ROW OPEN END			
	1 PLACE ± --- ± ---	JLAURX 2001/01/23	BACKPLANE			
	0 PLACE ± ±	APPROVED BY DATE	molex			
	ANGULAR ±1/2°	CBIXLER 2001/01/24	DOCUMENT NO. SD-74649-002			
	DRAFT WHERE APPLICABLE MUST REMAIN WITHIN DIMENSIONS	MATERIAL NO.	SHEET NO. 2 OF 2			
		SEE TABLE	THIS DRAWING CONTAINS INFORMATION THAT IS PROPRIETARY TO MOLEX INCORPORATED AND SHOULD NOT BE USED WITHOUT WRITTEN PERMISSION			