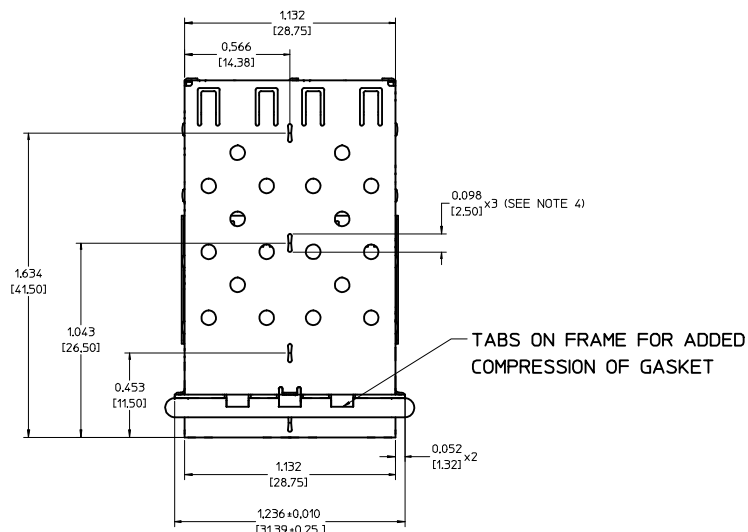
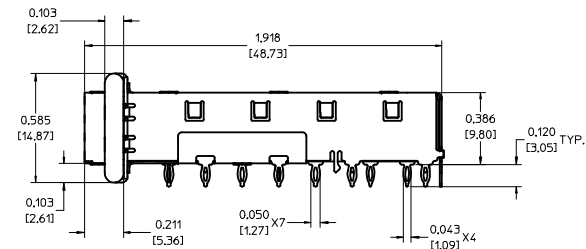
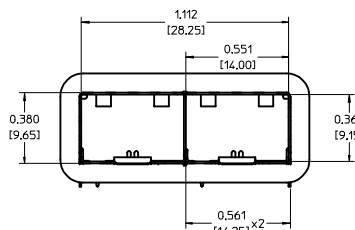


NOTES:

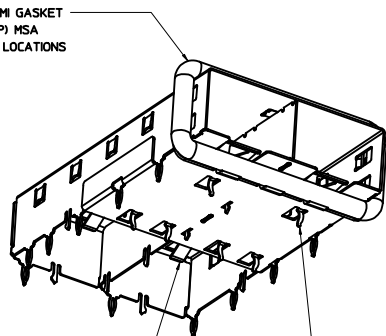
1. PRESS FIT LEGS 0.120" LONG-  
0.062 [1.57] MINIMUM PCB THICKNESS FOR SINGLE SIDED USE.  
THIS CAGE IS NOT DESIGNED FOR USE IN BELLY-TO-BELLY APPLICATIONS.
2. MATERIAL: COPPER ALLOY  
PLATING: PRE-PLATED NICKEL
3. REFERENCE DOCUMENTS:  
PRODUCT SPECIFICATION: PS-74728-000  
COSMETIC SPECIFICATIONS: WI-HP-2774 AND WI-HPA-7-0093  
TEST SUMMARY: TS-74722-0001.
4. MATES WITH SERIES 74727, LIGHT PIPE COVER ASSEMBLY.
5. THIS PART MEETS THE RESTRICTION OF HAZARDOUS SUBSTANCES IN ELECTRICAL AND ELECTRONIC EQUIPMENT (ROHS) DIRECTIVE (2002/95/EC).



TABS ON FRAME FOR ADDED COMPRESSION OF GASKET



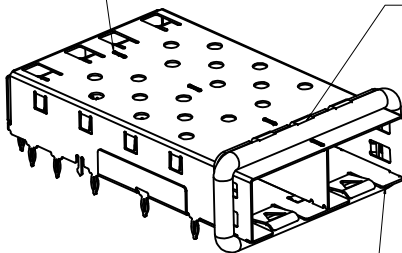
360° ELASTOMER EMI GASKET COMPLIES WITH (SFP) MSA BOARD AND BEZEL LOCATIONS



EMI FINGERS CONTACT ADAPTER

6 UNDER BELLY EMI PINS

INNER WALL TABS ARE COINED OVER BASE AND COVER FOR RIGIDITY



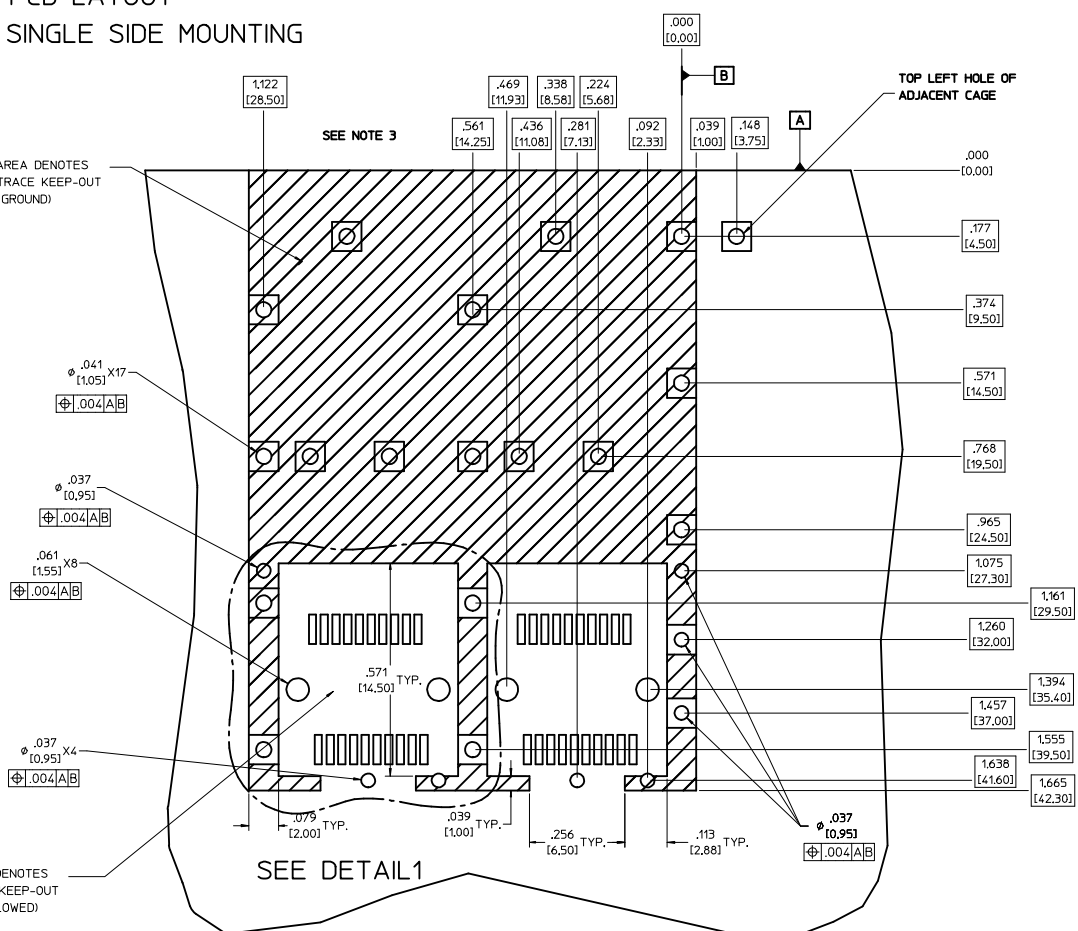
FRAME HAS TABS TO ADD COMPRESSION OF GASKET AGAINST CAGE FOR ENHANCED EMI PERFORMANCE. GASKET SEAM IS LOCATED ON TOP OF CAGE.

DIMENSIONS OF EACH INNER CAGE DESIGNED TO FUNCTION WITH SMALL FORM-FACTOR PLUGGABLE (SFP) TRANSCEIVER

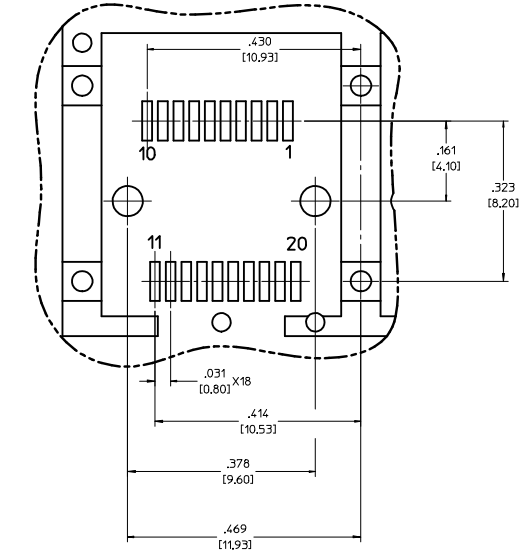
<b>ENTER DESCRIPTION</b> IEC NO: USY2006-0073 DRAWN BY: KSI MONSON 2006/01/17 CHECKED BY: CHYK BRUSSELL 2006/01/20 APPROVED BY: BRUSSELL 2006/01/25 REV:	<b>QUALITY SYMBOLS</b> ▽=0 ▽=0	<b>GENERAL TOLERANCES (UNLESS SPECIFIED)</b> mm: 4 PLACES ± ---, 3 PLACES ± ---, 2 PLACES ± 0.13, 1 PLACE ± 0.25 INCH: ± ---, ± .005, ± .010, ± --- ANGULAR ± 1°	<b>DIMENSION STYLE</b> IN/MM	SCALE: 3:1 DESIGN UNITS: METRIC THIRD ANGLE PROJECTION	
	DRAWN BY: KSI MONSON DATE: 2005/10/06	CHECKED BY: BRUSSELL DATE: 2005/10/06	APPROVED BY: BRUSSELL DATE: 2005/10/06	MATERIAL NO: 747220004 SIZE: D	TITLE: 1X2 SFP GANGED CAGE ASSY, FRAME W/ TABS PRE-PLATED MOLEX INCORPORATED DOCUMENT NO: SD-74722-004 SHEET NO: 1 OF 4
	DRAFT WHERE APPLICABLE MUST REMAIN WITHIN DIMENSIONS				THIS DRAWING CONTAINS INFORMATION THAT IS PROPRIETARY TO MOLEX INCORPORATED AND SHOULD NOT BE USED WITHOUT WRITTEN PERMISSION
	MOLEX INCORPORATED				

# PCB LAYOUT FOR SINGLE SIDE MOUNTING

CROSS-HATCHED AREA DENOTES COMPONENT AND TRACE KEEP-OUT (EXCEPT CHASSIS GROUND)



DETAIL1  
SCALE 8:1



SEE DETAIL1

NOTES:  
1. PADS AND VIAS GO TO CHASSIS GROUND. (19 PLACES).  
RECOMMENDED PADS TO BE 2mm SQUARE.

2. PLATING OPTIONAL FOR THROUGH HOLES (6 PLACES)

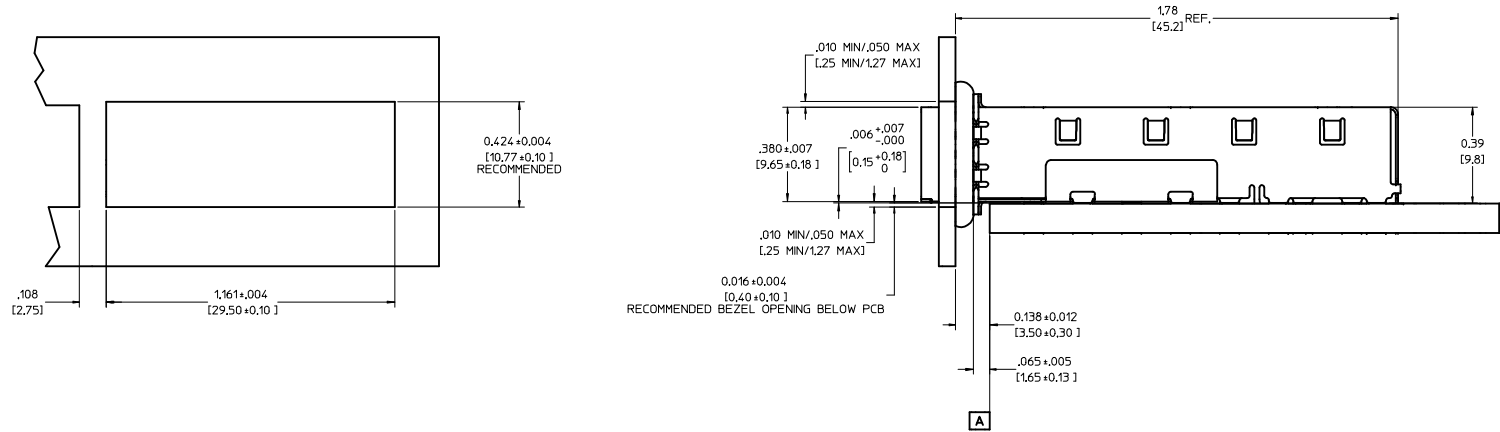
3. RECOMMENDED PLATING INCLUDES HASL, IMMERSION (GOLD, SILVER, OR TIN), AND OSP.

4. HOLE PATTERN REPEATS FOR EACH PORT.  
SPACING BETWEEN PORTS IS 0.561 [14.25]

5. CONNECTOR PAD LAYOUT PER SFP MSA. WILL ACCOMMODATE MOLEX CONNECTOR SERIES 74441 OR EQUIVALENT.

<b>ENTER DESCRIPTION</b> IEC NO: USY2006-0073 DRAWN BY: KSI MONSON 2006/01/17 CHECKED BY: CHYD BRUSSELL 2006/01/20 APPROVED BY: BRUSSELL 2006/01/25	<b>QUALITY SYMBOLS</b> ▽=0 ▽=0	<b>GENERAL TOLERANCES (UNLESS SPECIFIED)</b>		<b>DIMENSION STYLE</b> IN/MM	<b>SCALE</b> 6:1	<b>DESIGN UNITS</b> METRIC	THIRD ANGLE PROJECTION		
		4 PLACES ±.--- ±.--- 3 PLACES ±.--- ±.005 2 PLACES ±0.13 ±.010 1 PLACE ±0.25 ±.---	mm INCH	DRAWN BY: KSI MONSON DATE: 2005/10/06	CHECKED BY: BRUSSELL DATE: 2005/10/06	<b>TITLE</b> 1X2 SFP GANGED CAGE ASSY, FRAME W/ TABS PRE-PLATED			
		ANGULAR ± 1°	DRAFT WHERE APPLICABLE MUST REMAIN WITHIN DIMENSIONS	APPROVED BY: BRUSSELL DATE: 2005/10/06	MATERIAL NO. 747220004	DOCUMENT NO. SD-74722-004	<b>MOLEX INCORPORATED</b>		
		SIZE D	THIS DRAWING CONTAINS INFORMATION THAT IS PROPRIETARY TO MOLEX INCORPORATED AND SHOULD NOT BE USED WITHOUT WRITTEN PERMISSION	SHEET NO. 2 OF 4					

BEZEL AND BOARD POSITION DIMENSIONS FOR SINGLE SIDE MOUNTING



<b>ENTER DESCRIPTION</b> IEC NO: USY2006-0073 DRAWN BY: JIMONSON 2006/01/17 CHYKORUSSELL 2006/01/20 APPR: BRUSSELL 2006/01/25	<b>QUALITY SYMBOLS</b> ▽=0 ▽=0	<b>GENERAL TOLERANCES (UNLESS SPECIFIED)</b>		<b>DIMENSION STYLE</b> IN/MM	SCALE 4:1	DESIGN UNITS METRIC	THIRD ANGLE PROJECTION		
		4 PLACES ± .005 ± .005 3 PLACES ± .010 ± .010 2 PLACES ± 0.13 ± .010 1 PLACE ± 0.25 ± .010	mm INCH	DRAWN BY KS IMONSON 2005/10/06	DATE 2005/10/06	TITLE 1X2 SFP GANGED CAGE ASSY, FRAME W/ TABS PRE-PLATED			
		ANGULAR ± 1°	DRAFT WHERE APPLICABLE MUST REMAIN WITHIN DIMENSIONS	APPROVED BY BRUSSELL 2005/10/06	DATE 2005/10/06	MOLEX INCORPORATED			
		MATERIAL NO. 747220004	DOCUMENT NO. SD-74722-004	SHEET NO. 3 OF 4		THIS DRAWING CONTAINS INFORMATION THAT IS PROPRIETARY TO MOLEX INCORPORATED AND SHOULD NOT BE USED WITHOUT WRITTEN PERMISSION			

20 19 18 17 16 15 14 13 12 11 10 9 8 7 6 5 4 3 2 1

DATE	REV	CHANGES	COMMENTS
2005/10/06	A	INITIAL RELEASE	N/A

<b>ENTER DESCRIPTION</b> IEC NO: USY2006-0073 DRAWN BY: DRANKS IMONSON 2006/01/17 CHECKED BY: CHYK BRUSSELL 2006/01/20 APPR: BRUSSELL 2006/01/25	QUALITY SYMBOLS ▽=0 ▽=0	GENERAL TOLERANCES (UNLESS SPECIFIED) <table border="1"> <tr> <th></th> <th>mm</th> <th>INCH</th> </tr> <tr> <td>4 PLACES</td> <td>±.005</td> <td>±.0005</td> </tr> <tr> <td>3 PLACES</td> <td>±.010</td> <td>±.0010</td> </tr> <tr> <td>2 PLACES</td> <td>±0.13</td> <td>±.010</td> </tr> <tr> <td>1 PLACE</td> <td>±0.25</td> <td>±.010</td> </tr> </table> ANGULAR ± 1°		mm	INCH	4 PLACES	±.005	±.0005	3 PLACES	±.010	±.0010	2 PLACES	±0.13	±.010	1 PLACE	±0.25	±.010	DIMENSION STYLE IN/MM SCALE 1:1 DESIGN UNITS METRIC THIRD ANGLE PROJECTION	DRAWN BY: DATE KS IMONSON 2005/10/06 CHECKED BY: DATE BRUSSELL 2005/10/06 APPROVED BY: DATE BRUSSELL 2005/10/06	TITLE 1X2 SFP GANGED CAGE ASSY. FRAME W/ TABS PRE-PLATED
		mm	INCH																	
	4 PLACES	±.005	±.0005																	
	3 PLACES	±.010	±.0010																	
2 PLACES	±0.13	±.010																		
1 PLACE	±0.25	±.010																		
MATERIAL NO. 747220004	DOCUMENT NO. SD-74722-004	MOLEX INCORPORATED	SHEET NO. 4 OF 4																	
DRAFT WHERE APPLICABLE MUST REMAIN WITHIN DIMENSIONS				THIS DRAWING CONTAINS INFORMATION THAT IS PROPRIETARY TO MOLEX INCORPORATED AND SHOULD NOT BE USED WITHOUT WRITTEN PERMISSION																
SIZE D																				

19 18 17 16 15 14 13 12 11 10 9 8 7 6 5 4 3 2 1