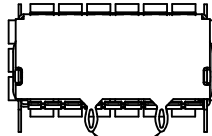
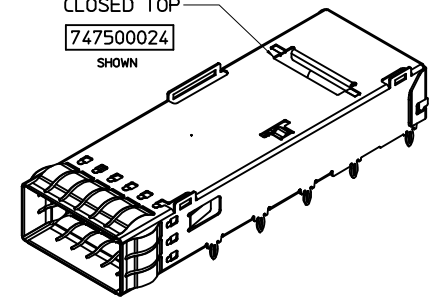


[illegible]

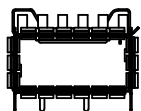
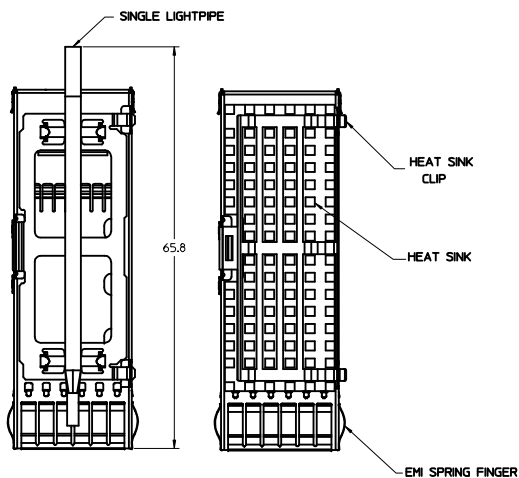
	WEEK/YEAR DATE CODE TABLE
WW	01 THRU 52 EXAMPLE: 01 = FIRST WEEK OF YEAR 52 = LAST WEEK OF YEAR
YY	11, 12, 13 ETC. EXAMPLE: YEAR 2013 = 13



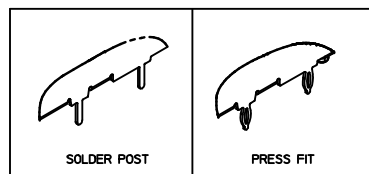
1. PRESS FIT LEGS 2.28 / 3.05 mm LONG
2. SOLDER POST LEGS 1.90 / 2.90 mm LONG
3. SINGLE SIDED BOARD THICKNESS
NOMINAL: 1.60
MINIMUM: 1.44
- BELLY TO BELLY BOARD THICKNESS
NOMINAL: 2.30
MINIMUM: 2.07
4. MATERIAL: COPPER ALLOY (PLATED PRIOR TO CUTTING AND FORMING)
CAGE: 0.25 mm THICK COPPER ALLOY, NICKEL PLATED OR TIN
SPRING FINGER: 0.08 mm THICK COPPER ALLOY, NICKEL PLATED
HEAT SINK CLIP: STAINLESS STEEL
LIGHT PIPES: POLYCARBONATE (UL 94-V0 RATED)
HEATSINKS: ANNOXIDIZED ALUMINUM
5. REFERENCE DOCUMENTS: PRODUCT SPECIFICATION: QSFP MSA
6. CUSTOM HEATSINKS AVAILABLE UPON REQUEST
7. QSFP: ASSEMBLES ALSO AVAILABLE IN 1X2 (74767 SERIES),
1X3 (74768 SERIES), 1X4 (74769 SERIES) AND 1X6 (74771 SERIES).
8. PACKAGED IN TRAY.
9. NO RoHS EXEMPTIONS.

Ib_frame_D_P_AM_T
Rev. G 2012/01/11

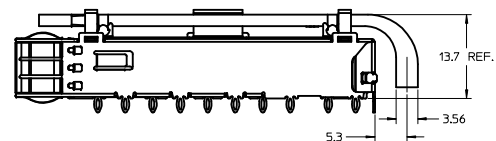
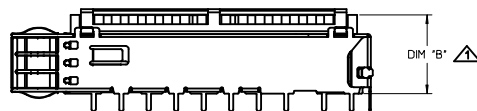
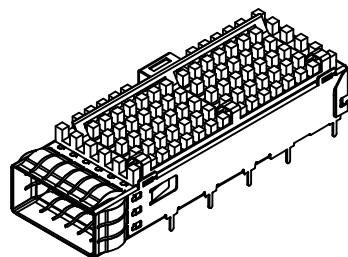
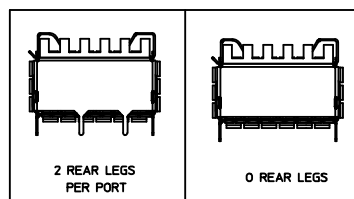
CAGE ASSEMBLY OPTIONS



LEG TYPE OPTIONS



REAR LEG OPTIONS



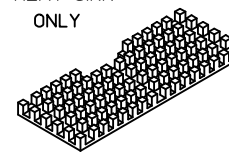
HEATSINK HEIGHT OPTIONS

OVERALL HEATSINK HEIGHT	DIM B	TOL
PCI	13.7	+0.25
SAN	16.0	-0.73
NET	23.0	

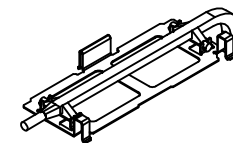
△ HEIGHT OF HEATSINK WITH MODULE INSERTED.
DIMENSION MAY BE LESS DUE TO MODULE AND HEATSINK VARIATIONS.

HEATSHINK AND LIGHT PIPE OPTIONS

HEAT SINK ONLY

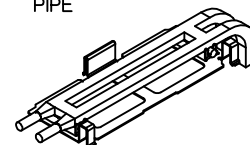


SINGLE LIGHT PIPE



MOLEX P/N: 747500030

DUAL LIGHT PIPE

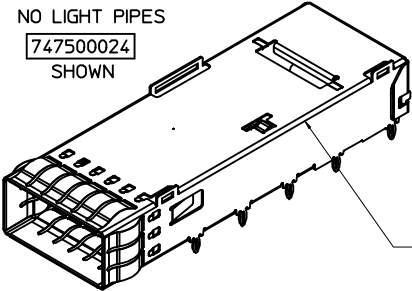


MOLEX P/N: 747500031

ADDED P/N 0062 SHT 3				QUALITY SYMBOLS		GENERAL TOLERANCES (UNLESS SPECIFIED)				DIMENSION STYLE		SCALE		DESIGN UNITS		THIRD ANGLE PROJECTION	
EC NO: CPG2013-3152				▽=0		mm				MM ONLY		2.5:1		METRIC		⊙ □	
DRWN:ERWIN 2013/04/09				▽=0		INCH				DRAWN BY		DATE		TITLE		QSFP+ CAGE ASSEMBLY WITH SPRING FINGERS	
CHKD:PRICE 2013/04/09				▽=0		0 PLACES ± --- ± ---				CHIRSCHY		2007/07/23					
APPR:CHIRSCHY 2013/08/16				▽=0		3 PLACES ± --- ± ---				CHECKED BY		DATE					
						2 PLACES ± 0.13 ± ---				BRUSSELL		2007/07/23					
						1 PLACE ± 0.25 ± ---				APPROVED BY		DATE					
						0 PLACE ± --- ± ---				RMAHMOOD		2010/11/01					
						ANGULAR ± 1 °				MATERIAL NO.		DOCUMENT NO.				SHEET NO.	
						DRAFT WHERE APPLICABLE MUST REMAIN WITHIN DIMENSIONS				SEE SHEET 3		SD-74750-0021				2 OF 8	
K										SIZE		THIS DRAWING CONTAINS INFORMATION THAT IS PROPRIETARY TO MOLEX INCORPORATED AND SHOULD NOT BE USED WITHOUT WRITTEN PERMISSION					

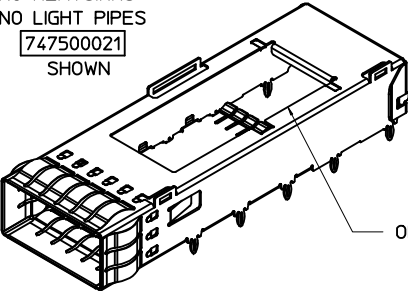
PART NUMBER SELECTION

NO HEATSINKS
NO LIGHT PIPES
747500024
SHOWN



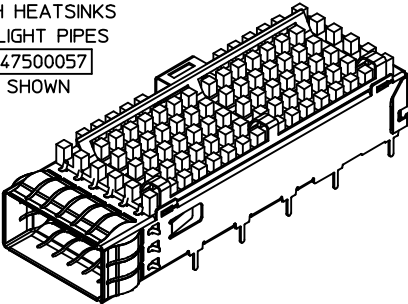
CLOSED TOP

NO HEATSINKS
NO LIGHT PIPES
747500021
SHOWN



OPEN TOP

WITH HEATSINKS
NO LIGHT PIPES
747500057
SHOWN




MOLEX P/N		# OF REAR LEGS PER PORT	DIM A	PLATING
LEG TYPE PRESS FIT	LEG TYPE SOLDER POST			
747500024	---	2	2.28	NICKEL
---	747500051	2	1.9	NICKEL
---	747500053	2	1.9	MATTE TIN
---	747500056	2	1.9	BRIGHT TIN

MOLEX P/N		# OF REAR LEGS PER PORT	DIM A	PLATING
LEG TYPE PRESS FIT	LEG TYPE SOLDER POST			
747500012	---	2	3.05	NICKEL
747500021	---	2	2.28	NICKEL
747500023	---	0	2.28	NICKEL
---	747500058	2	2.90	NICKEL
---	747500062 *	2	2.90	NICKEL

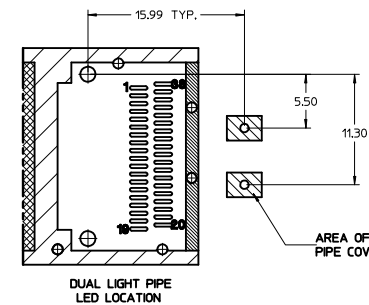
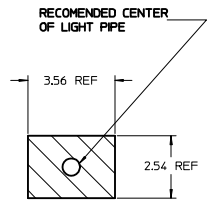
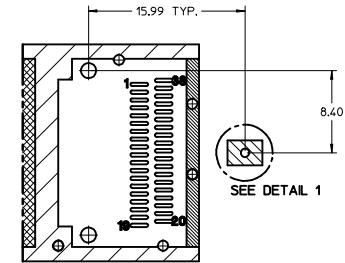
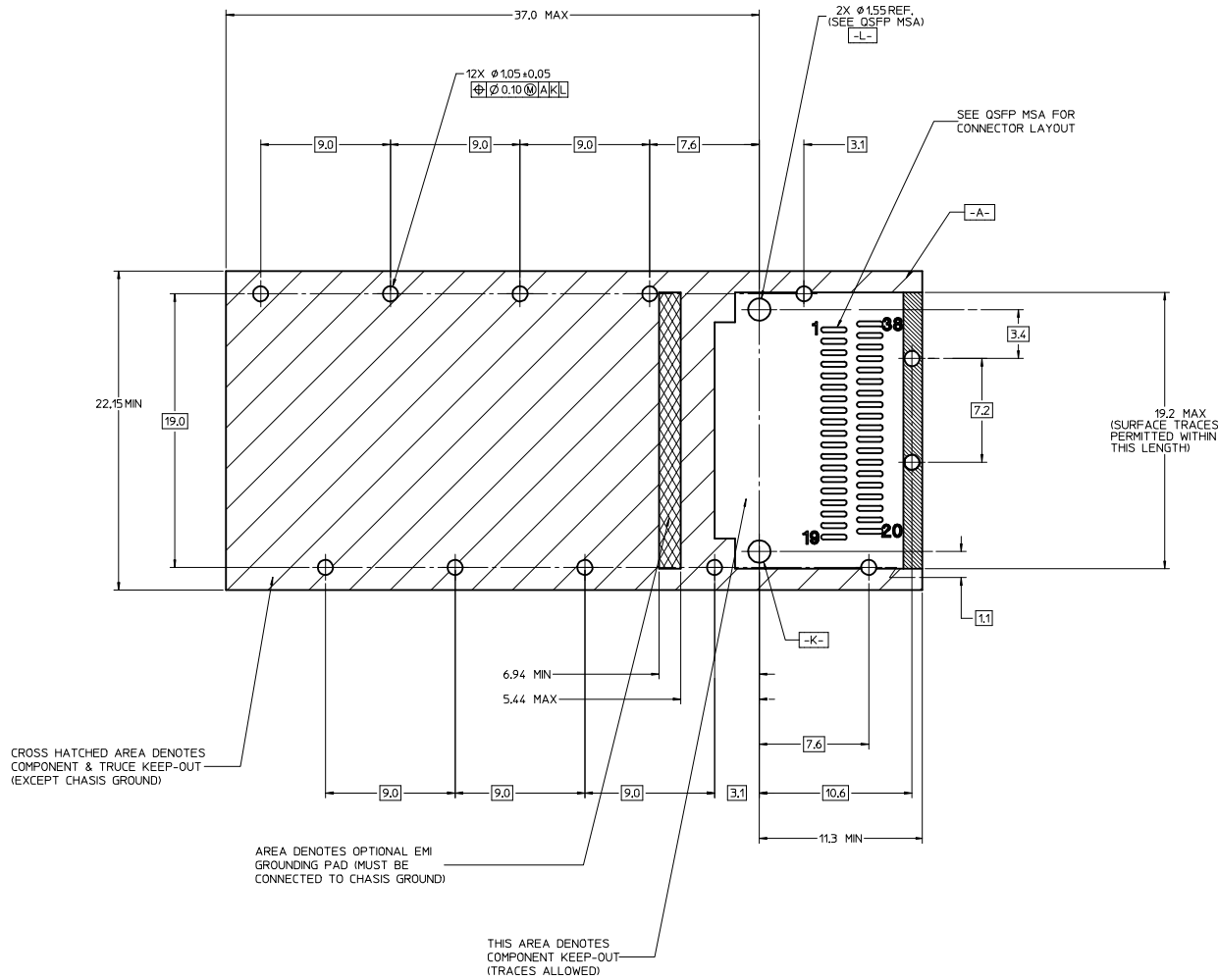
MOLEX P/N		# OF REAR LEGS PER PORT	DIM A	DIM B	PLATING
LEG TYPE PRESS FIT	LEG TYPE SOLDER POST				
---	747500057	2	2.9	13.7	NICKEL
747500040	---	2	2.28	16.0	NICKEL
747500042	---	0	2.28	16.0	NICKEL
747500044	---	2	2.28	13.7	NICKEL
747500046	---	2	2.28	23.0	NICKEL

* HEATSINK/LIGHT PIPE CLIP FEATURE REMOVED.

ADDED P/N 0062 SHT EC NO. CPG2013-3152 DRAWN: LERMIN 2013/04/09 CHKD: PRICE 2013/04/09 APPR: CHIRSCHY 2013/08/16	QUALITY SYMBOLS ▽=0 ▽=0 ▽=0	DESCRIPTION	GENERAL TOLERANCES (UNLESS SPECIFIED)		DIMENSION STYLE MM ONLY		SCALE 2.5:1	DESIGN UNITS METRIC	 THIRD ANGLE PROJECTION	TITLE QSFP+ CAGE ASSEMBLY WITH SPRING FINGERS molex	DOCUMENT NO. SD-74750-0021	SHEET NO. 3 OF 8
			mm INCH		DRAWN BY CHIRSCHY		DATE 2007/07/23					
			4 PLACES ± --- ± ---		CHECKED BY BRUSSELL		DATE 2007/07/23					
			3 PLACES ± --- ± ---		APPROVED BY RMAHMOOD		DATE 2010/11/01					
			2 PLACES ± 0.13 ± ---		MATERIAL NO.		SEE SHEET 3					
			1 PLACE ± 0.25 ± ---		ANGULAR ± 1 °		DRAFT WHERE APPLICABLE MUST REMAIN WITHIN DIMENSIONS					
0 PLACE ± --- ± ---												


PCB LAYOUT FOR SINGLE SIDED APPLICATIONS

FOR CAGE ASSEMBLIES WITH LIGHT PIPES



NOTES:

- DATUM -A- IS TOP SURFACE OF HOST BOARD PER MSA
- FINISHED HOLE SIZE (AFTER PLATING)
- DATUM -K- IS HOST BOARD THRU HOLE #1 TO ACCEPT CONNECTOR GUIDE POST PER MSA
- DATUM -L- IS HOST BOARD THRU HOLE #2 TO ACCEPT CONNECTOR GUIDE POST PER MSA

ADDED P/N 0062 SHT 3 EC NO: CPG2013-3152 DRAWN: LERWIN 2013/04/09 CHECKED: PRICE 2013/04/09 APPROVED: CHIRSCHY 2013/08/16	QUALITY SYMBOLS ▽=0 ▽=0 ▽=0	DESCRIPTION	GENERAL TOLERANCES (UNLESS SPECIFIED)		DIMENSION STYLE		SCALE	DESIGN UNITS	 THIRD ANGLE PROJECTION
					MM ONLY		1:1	METRIC	
							TITLE		
							QSFP+ CAGE ASSEMBLY WITH SPRING FINGERS		
			ANGULAR ± 1 °		MATERIAL NO.		DOCUMENT NO.		SHEET NO.
			DRAFT WHERE APPLICABLE MUST REMAIN WITHIN DIMENSIONS		SEE SHEET 3		SD-74750-0021		4 OF 8
		REV	THIS DRAWING CONTAINS INFORMATION THAT IS PROPRIETARY TO MOLEX INCORPORATED AND SHOULD NOT BE USED WITHOUT WRITTEN PERMISSION						

20	19	18	17	16	15	14	13	12	11	10	9	8	7	6	5	4	3	2	1
----	----	----	----	----	----	----	----	----	----	----	---	---	---	---	---	---	---	---	---



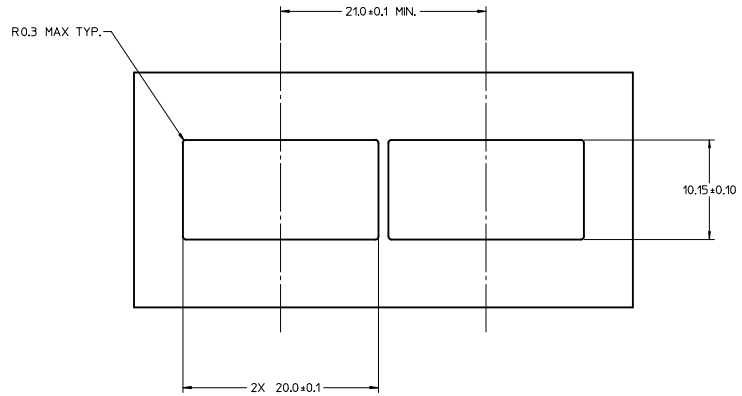
NOTE:
FOR RECOMENDED CENTER
OF LIGHT PIPES,
SEE SHEET 4

NOTES:

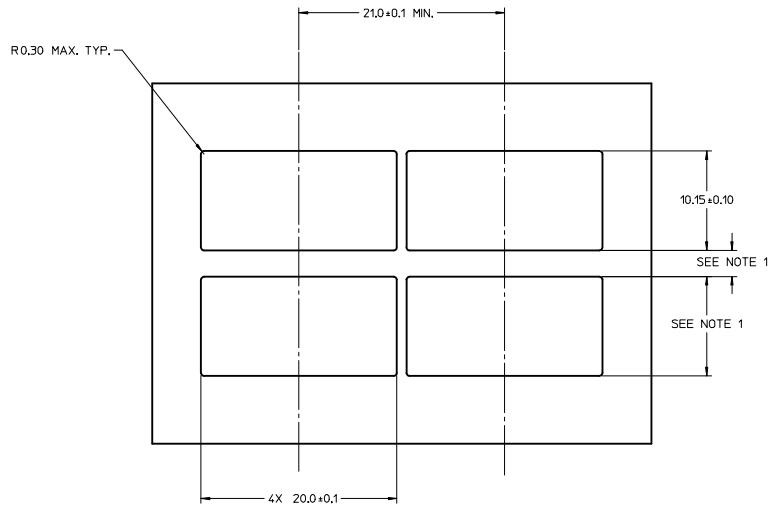
1. DATUM -A- IS TOP SURFACE OF HOST BOARD PER MSA.
2. FINISHED HOLE SIZE (AFTER PLATING).
3. DATUM -K- IS HOST BOARD THRU HOLE #1 TO ACCEPT CONNECTOR GUIDE POST PER MSA.
4. DATUM -L- IS HOST BOARD THRU HOLE #2 TO ACCEPT CONNECTOR GUIDE POST PER MSA.

ADDED P/N 0062 SHT 3 EC NO: JF2013-3752 K DRAWN: JERWIN 2013/04/09 CHCKD: HRLC 2013/04/09 APPR: HRLC 2013/08/16		QUALITY SYMBOLS ▽=0 ▽=0 ▽=0	DESCRIPTION 4 PLACES +---+---+ 3 PLACES +---+---+ 0 PLACES +.13+---+ 1 PLACE +.25+---+ 0 PLACE +---+---+	GENERAL TOLERANCES (UNLESS SPECIFIED) mm INCH +---+---+ +---+---+ +---+---+ +---+---+ +---+---+	DIMENSION STYLE MM ONLY DRAWN BY CHIRSCHY 2007/07/23 CHECKED BY BRUSSELL 2007/07/23 APPROVED BY RMAHMOOD 2010/11/01	SCALE 1:1 DESIGN UNITS METRIC THIRD ANGLE PROJECTION	TITLE QSPF+ CAGE ASSEMBLY WITH SPRING FINGERS molex MATERIAL NO. SEE SHEET 3 DOCUMENT NO. SD-74750-0021	SHEET NO. 5 OF 8
REV DRAFT WHERE APPLICABLE MUST REMAIN WITHIN DIMENSIONS		THIS DRAWING CONTAINS INFORMATION THAT IS PROPRIETARY TO MOLEX INCORPORATED AND SHOULD NOT BE USED WITHOUT WRITTEN PERMISSION						

BEZEL AND BOARD POSITION DIMENSIONS
FOR SINGLE SIDE MOUNTING




BEZEL AND BOARD POSITION DIMENSIONS
FOR BELLY-TO-BELLY MOUNTING

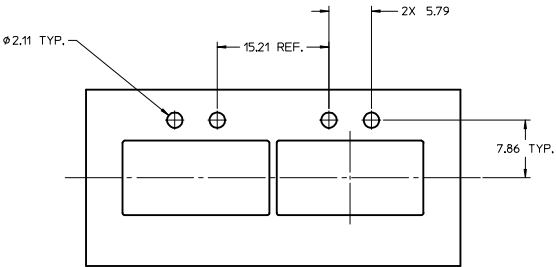
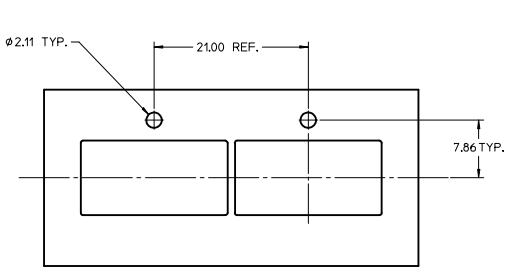


NOTE:

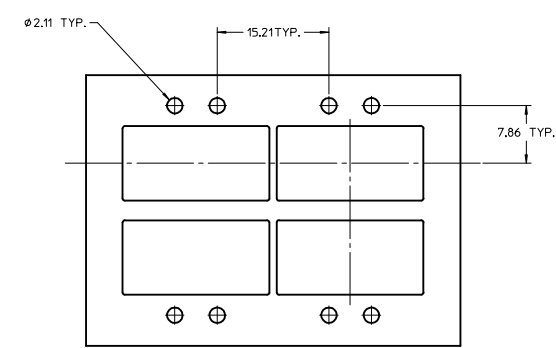
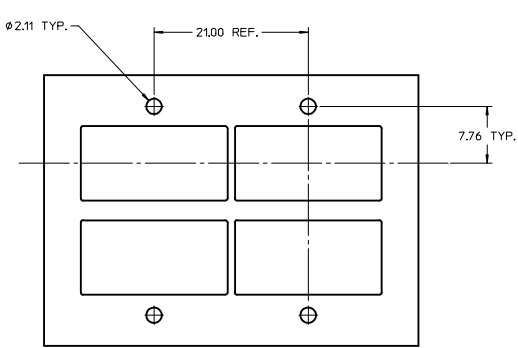
1. SEE QSFP MSA SPECIFICATION FOR BEZEL LOCATION TOLERANCE.
2. PCB THICKNESS VARIATION MUST BE CONSIDERED WHEN DETERMINING BEZEL OPENING, SIZE, AND LOCATION.


ADDED P/N 0062 SHT 3 EC NO. CPG2013-3152 DRAWN: ERWIN 2013/04/09 CHKD: PRICE 2013/04/09 APPROV: CHIRSCHY 2013/08/16	QUALITY SYMBOLS ▽=0 ▽=0 ▽=0	DESCRIPTION	GENERAL TOLERANCES (UNLESS SPECIFIED)		DIMENSION STYLE MM ONLY		SCALE 1:1	DESIGN UNITS METRIC	 THIRD ANGLE PROJECTION	TITLE QSFP+ CAGE ASSEMBLY WITH SPRING FINGERS molex SD-74750-0021		
				mm	INCH	DRAWN BY	DATE					
			4 PLACES	±	---	±	---	CHIRSCHY			2007/07/23	
			3 PLACES	±	---	±	---	CHECKED BY			DATE	
			2 PLACES	±	0.13	±	---	BRUSSELL			2007/07/23	
			1 PLACE	±	0.25	±	---	APPROVED BY			DATE	
			0 PLACE	±	---	±	---	RMAHMOOD			2010/11/01	
			ANGULAR ± 1 °		MATERIAL NO.		DOCUMENT NO.				SHEET NO.	
			DRAFT WHERE APPLICABLE MUST REMAIN WITHIN DIMENSIONS		SEE SHEET 3		SD-74750-0021				6 OF 8	
			SIZE D	THIS DRAWING CONTAINS INFORMATION THAT IS PROPRIETARY TO MOLEX INCORPORATED AND SHOULD NOT BE USED WITHOUT WRITTEN PERMISSION								

BEZEL LIGHT PIPE CUTOUT POSITION DIMENSIONS
FOR SINGLE SIDE MOUNTING



BEZEL LIGHT PIPE CUTOUT POSITION DIMENSIONS
FOR BELLY-TO-BELLY MOUNTING



ADDED P/N 0062 SHT 3 EC NO: CPG2013-3152 DRAWN: ERWIN 2013/04/09 CHKD: PRICE 2013/04/09 APPR: CHIRSCHY 2013/08/16	QUALITY SYMBOLS ▽=0 ▽=0 ▽=0	GENERAL TOLERANCES (UNLESS SPECIFIED)		DIMENSION STYLE MM ONLY		SCALE 3:1	DESIGN UNITS METRIC	 THIRD ANGLE PROJECTION	TITLE QSFP+ CAGE ASSEMBLY WITH SPRING FINGERS	
		4 PLACES	± 0.13	mm	INCH	DRAWN BY CHIRSCHY	DATE 2007/07/23			
		3 PLACES	± 0.25	mm	INCH	CHECKED BY BRUSSELL	DATE 2007/07/23			
		2 PLACES	± 0.50	mm	INCH	APPROVED BY RAHMOOD	DATE 2010/11/01			
		ANGULAR ± 1 °		MATERIAL NO.		DOCUMENT NO.				SHEET NO. 7 OF 8
		DRAFT WHERE APPLICABLE MUST REMAIN WITHIN DIMENSIONS		SEE SHEET 3		SD-74750-0021				
REV		SIZE D		THIS DRAWING CONTAINS INFORMATION THAT IS PROPRIETARY TO MOLEX INCORPORATED AND SHOULD NOT BE USED WITHOUT WRITTEN PERMISSION						

