

PART NO. AND WEEK/YEAR DATE CODE TO BE PRINTED ON BACK OF COMPLETED CAGE ASSEMBLY APPROXIMATELY AS SHOWN. SEE TABLE BELOW FOR DATE CODE INFORMATION.

WEEK/YEAR DATE CODE TABLE	
WEEK	01 THRU 52 EXAMPLE: 01 = FIRST WEEK OF YEAR 52 = LAST WEEK OF YEAR
YEAR	10, 11, 12 ETC. EXAMPLE: YEAR 2010 = 10

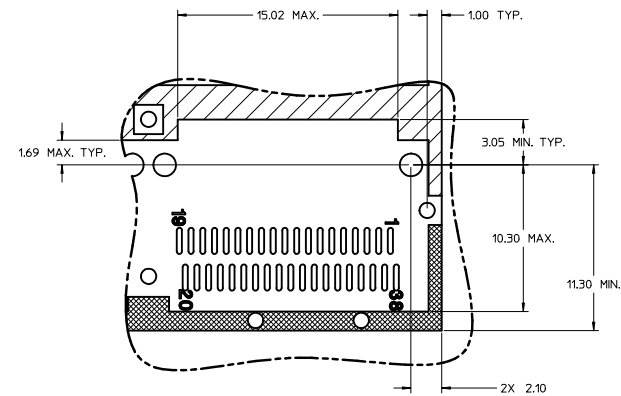
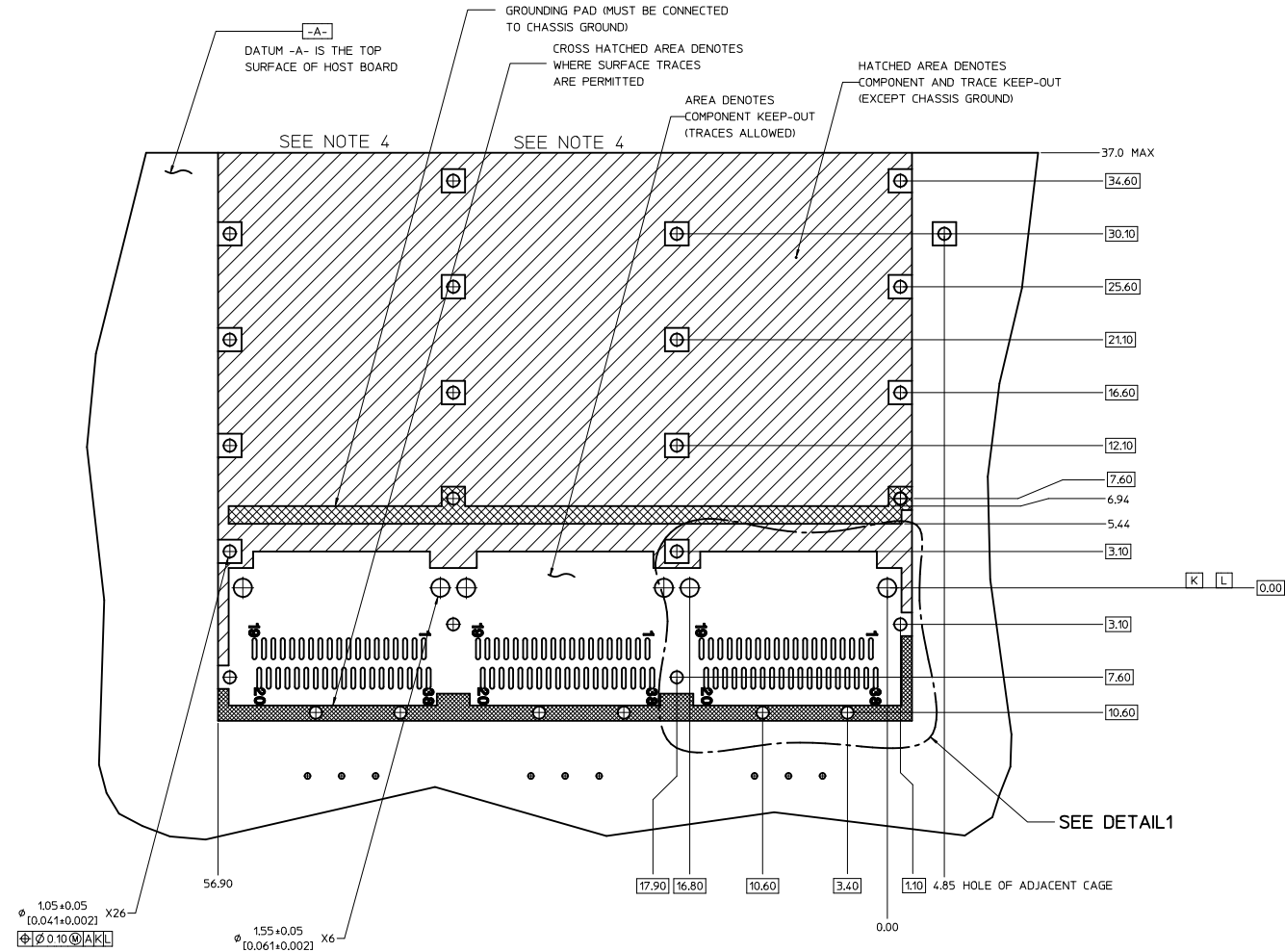
FINISHED ASSEMBLY P/N	DESCRIPTION	# OF REAR LEGS	BEZEL GASKET	HEAT SINK OPENING
747680210	QSFP+ 1X3 CAGE ASSY - PRESS FIT	0	YES	OPEN TOP
747680211	QSFP+ 1X3 CAGE ASSY - PRESS FIT	0	NO	OPEN TOP
747680212	QSFP+ 1X3 CAGE ASSY - PRESS FIT	2	YES	OPEN TOP
747680223	QSFP+ 1X3 CAGE ASSY - PRESS FIT	2	YES	CLOSED TOP

NOTES:

- PRESS-FIT LEGS 2.29 [0.090] LONG -
1.57 [0.062] MINIMUM PCB THICKNESS FOR SINGLE SIDED USE.
2.54 [0.100] MINIMUM PCB THICKNESS FOR BELLY TO BELLY USE
- MATERIAL- COPPER ALLOY
PLATING - PRE-PLATED NICKEL
- LEAD FREE, NO RoHS EXEMPTIONS.

DATE CODE & NOTES EC NO: CPG2012-1285 DRAWN BY: CHIRSCHE CHECKED BY: CHIRSCHE APPROVED BY: CHIRSCHE DATE: 2011/04/05 DATE: 2011/04/05 DATE: 2012/04/17	QUALITY SYMBOLS ▽=0 ▽=0	GENERAL TOLERANCES (UNLESS SPECIFIED) mm INCH 4 PLACES ± --- ± --- 3 PLACES ± --- ± --- 2 PLACES ± 0.13 ± --- 1 PLACE ± 0.25 ± --- ANGULAR ± 1°	DIMENSION STYLE MM ONLY DRAWN BY: CHIRSCHE CHECKED BY: CHIRSCHE APPROVED BY: CHIRSCHE DATE: 2008/12/19 DATE: 2008/12/19 DATE: 2008/12/19	SCALE 3:1 DESIGN UNITS METRIC	THIRD ANGLE PROJECTION	TITLE QSFP+ 1X3 GANGED CAGE W/ ELASTOMER GASKET	MOLEX INCORPORATED	DOCUMENT NO. SD-74768-0212	SHEET NO. 1 OF 5										
										DRAFT WHERE APPLICABLE MUST REMAIN WITHIN DIMENSIONS									
										THIS DRAWING CONTAINS INFORMATION THAT IS PROPRIETARY TO MOLEX INCORPORATED AND SHOULD NOT BE USED WITHOUT WRITTEN PERMISSION									


20 19 18 17 16 15 14 13 12 11 10 9 8 7 6 5 4 3 2 1



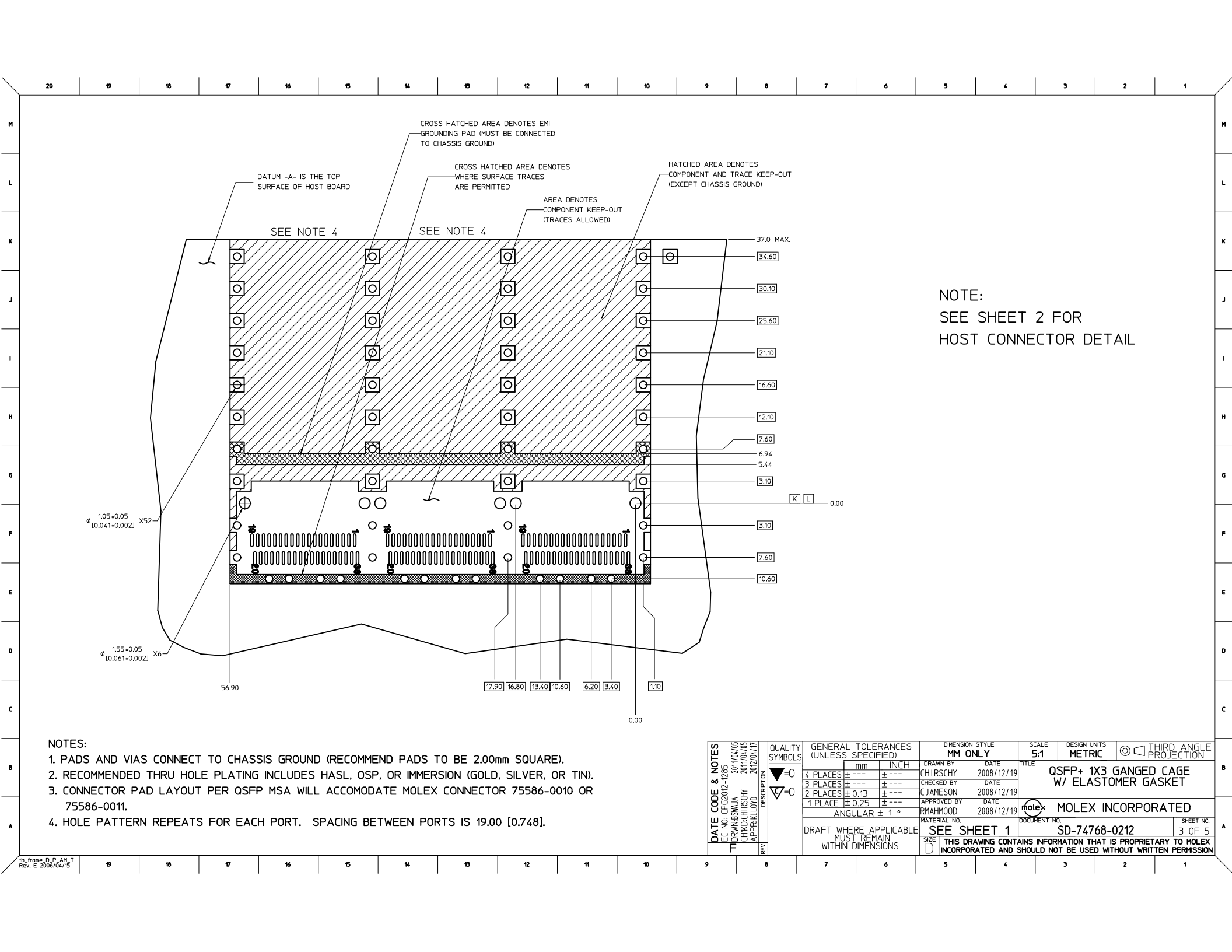
DETAIL 1
SCALE 6:1
HOST CONNECTOR DETAIL

NOTES:

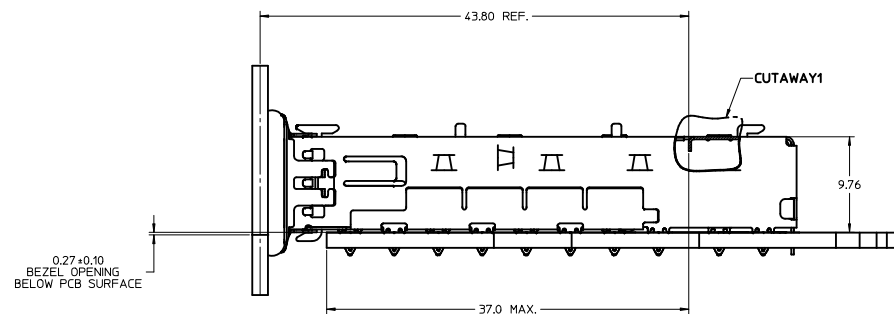
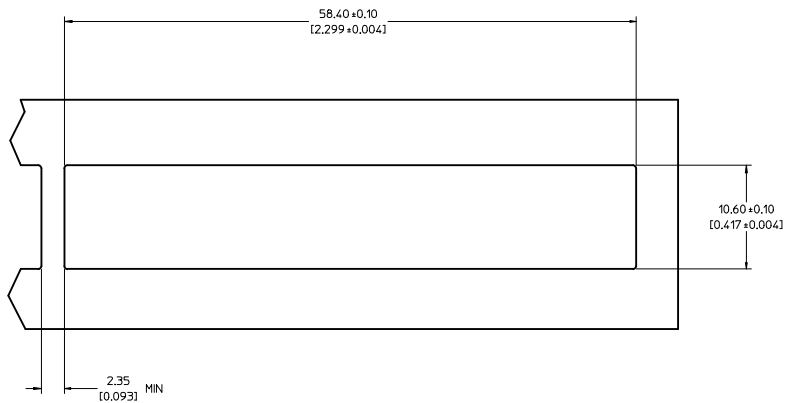
1. PADS AND VIAS CONNECT TO CHASSIS GROUND (RECOMMEND PADS TO BE 2.00mm SQUARE).
2. RECOMMENDED THRU HOLE PLATING INCLUDES HASL, OSP, OR IMMERSION (GOLD, SILVER, OR TIN).
3. CONNECTOR PAD LAYOUT PER QSFP MSA WILL ACCOMODATE MOLEX CONNECTOR 75586-0010 OR 75586-0011.
4. HOLE PATTERN REPEATS FOR EACH PORT. SPACING BETWEEN PORTS IS 19.00 [0.748].

DATE CODE & NOTES EC NO: CPG2012-1285 T1 DRWN:SWAJA 2011/04/05 CHKD:CHRSCHY 2011/04/05 APPR:KLLOYD 2012/04/17	QUALITY SYMBOLS ▽=0 ▽=0	GENERAL TOLERANCES (UNLESS SPECIFIED)				DIMENSION STYLE MM ONLY		SCALE 5:1	DESIGN UNITS METRIC	 THIRD ANGLE PROJECTION	
						DRAWN BY CHIRSCHY	DATE 2008/12/19	TITLE QSFP+ 1X3 GANGED CAGE W/ ELASTOMER GASKET			
						CHECKED BY JAMESON	DATE 2008/12/19				
						APPROVED BY RMAHMOOD	DATE 2008/12/19	MOLEX INCORPORATED			
						MATERIAL NO. SEE SHEET 1		DOCUMENT NO. SD-74768-0212			SHEET NO. 2 OF 5
						SIZE D		THIS DRAWING CONTAINS INFORMATION THAT IS PROPRIETARY TO MOLEX INCORPORATED AND SHOULD NOT BE USED WITHOUT WRITTEN PERMISSION			
		mm		INCH							
4 PLACES ±		---		±		---					
3 PLACES ±		---		±		---					
2 PLACES ±		0.13		±		---					
1 PLACE ±		0.25		±		---					
		ANGULAR ± 1 °									
		DRAFT WHERE APPLICABLE MUST REMAIN WITHIN DIMENSIONS									

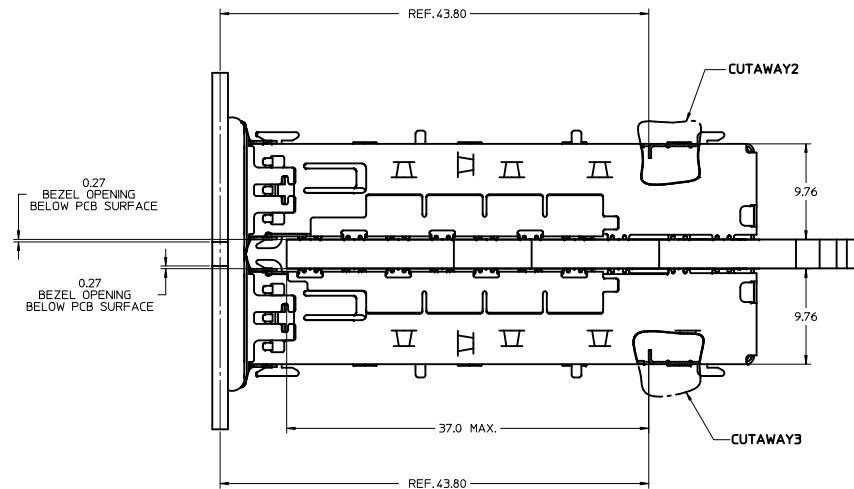
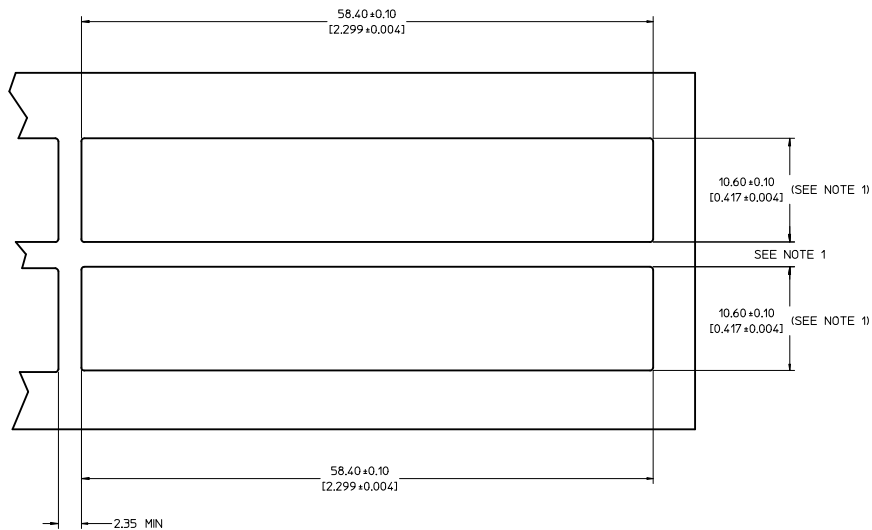
19 18 17 16 15 14 13 12 11 10 9 8 7 6 5 4 3 2 1



BEZEL AND BOARD POSITION DIMENSIONS FOR SINGLE SIDE MOUNTING



BEZEL AND BOARD POSITION DIMENSIONS FOR BELLY TO BELLY MOUNTING



NOTES:
1. PCB THICKNESS VARIATION MUST BE CONSIDERED WHEN DETERMINING
BEZEL OPENING, SIZE AND LOCATION

DATE CODE & NOTES		QUALITY SYMBOLS		GENERAL TOLERANCES (UNLESS SPECIFIED)		DIMENSION STYLE		SCALE		DESIGN UNITS		THIRD ANGLE PROJECTION	
EC NO: CPG2012-1285	2011/04/05	DRWNSWJAJA	2011/04/05	▽=0	mm	MM ONLY	DATE	4:1	METRIC	◎	THIRD ANGLE PROJECTION	OSFP+ 1X3 GANGED CAGE W/ ELASTOMER GASKET	
CHYKCHIRSCY	2011/04/05	CHYKCHIRSCY	2011/04/05	▽=0	INCH	DATE	DATE						
APPR:KLLOYD	2012/04/17	APPR:KLLOYD	2012/04/17		4 PLACES ± ---	CHIRSCY	2008/12/19					MOLEX INCORPORATED	
					3 PLACES ± ---	C JAMESON	2008/12/19						
					2 PLACES ± 0.13	APPROVED BY	DATE					SD-74768-0212	
					1 PLACE ± 0.25	RAHMOOD	2008/12/19						
					ANGULAR ± 1 °							4 OF 5	
												THIS DRAWING CONTAINS INFORMATION THAT IS PROPRIETARY TO MOLEX INCORPORATED AND SHOULD NOT BE USED WITHOUT WRITTEN PERMISSION	

20 19 18 17 16 15 14 13 12 11 10 9 8 7 6 5 4 3 2 1

M M

L L

K K

J J

I I

H H

G G

F F

E E

D D

C C

B B

A A

DATE	REV	DESCRIPTION
2008/12/22	A	INITIAL RELEASE
2009/03/19	B	1. ADDED 747830223 TO P/N LIST
		2. ADDED ISO VIEW OF A CLOSED TOP CAGE
2009/04/02	C	ADD NOTES TO PAGE 1
2009/04/20	D	ADDED 747680211 TO P/N TABLE
2010/01/29	E	UPDATED VIEWS TO SHOW CORRECT COVER ON CLOSED TOP CAGE (HEAT SINK LOCATING FEATURES REMOVED)
2011/04/05	G	1. ADDED BACK VEIW
		2. ADDED DATE CODE AND ASSOCIATED NOTES

DATE CODE & NOTES EC NO. CPG2012-1285 DRAWN:SWAJA 2011/04/05 CHKD:CHRSCHY 2011/04/05 APPR:KLLOYD 2012/04/17	QUALITY SYMBOLS ▽=0 ▽=0	GENERAL TOLERANCES (UNLESS SPECIFIED)		DIMENSION STYLE MM ONLY		SCALE 1:1	DESIGN UNITS METRIC	THIRD ANGLE PROJECTION
				DRAWN BY DATE CHIRSCHY 2008/12/19		TITLE QSFP+ 1X3 GANGED CAGE W/ ELASTOMER GASKET		
		4 PLACES ± --- ± ---		CHECKED BY DATE JAMESON 2008/12/19				
		3 PLACES ± --- ± ---		APPROVED BY DATE RAHMOOD 2008/12/19				
		2 PLACES ± 0.13 ± ---		MOLEX MOLEX INCORPORATED				
		1 PLACE ± 0.25 ± ---						
		ANGULAR ± 1 °		MATERIAL NO. SEE SHEET 1		DOCUMENT NO. SD-74768-0212		SHEET NO. 5 OF 5
		DRAFT WHERE APPLICABLE MUST REMAIN WITHIN DIMENSIONS		THIS DRAWING CONTAINS INFORMATION THAT IS PROPRIETARY TO MOLEX INCORPORATED AND SHOULD NOT BE USED WITHOUT WRITTEN PERMISSION				

19 18 17 16 15 14 13 12 11 10 9 8 7 6 5 4 3 2 1