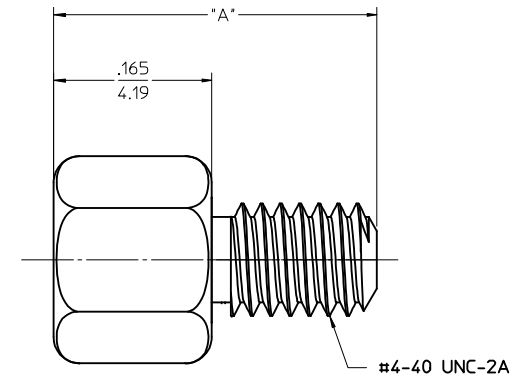


NOTES:

1. PARTS ARE PACKAGED IN POLY BAGS CONSISTING OF 40 PIECES.
2. INTERNAL AND EXTERNAL THREADS TO WITHSTAND A MINIMUM APPLIED TORQUE OF 5 lbf in/5.76 kgf cm.



1b_frame_C-B1 rev. B1 2000/08/01	11	10	9	8	7	6	5	4	3	2	1
-------------------------------------	----	----	---	---	---	---	---	---	---	---	---