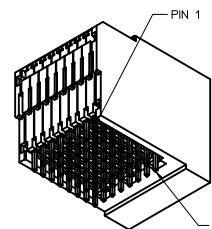
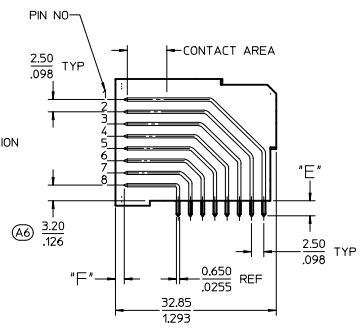
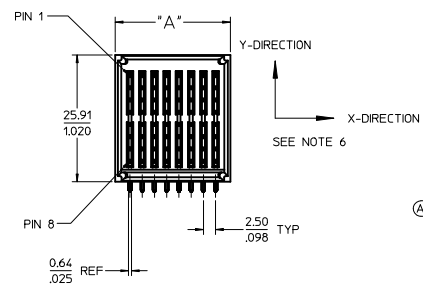
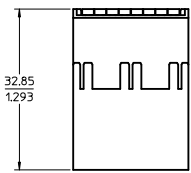
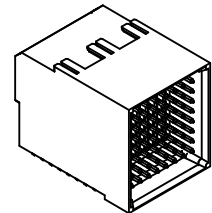
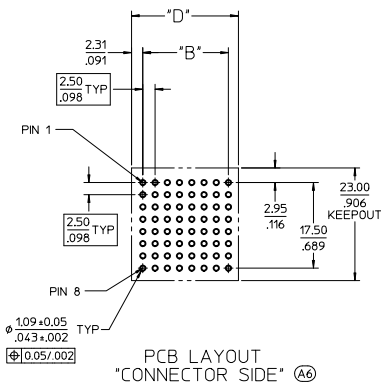


| PART NUMBER | CIRCUIT SIZE | DIM "A" | DIM "B" | DIM "D" | DIM "E" TAIL | DIM "F" PIN | MATING MODULE | PLATING |
|-------------|--------------|------------|------------|------------|-------------------------|--|---------------|---|
| 75568-5000 | 64 | 23.50/.925 | 17.50/.689 | 27.50/1.08 | 3.07+0.10/ .12+0.004 | 2.51/.099 | 75548-2000 | 30µ INCH MIN SELECT HARD GOLD IN CONTACT AREA WITH 100µ INCH MIN SELECT TIN IN TAIL AREA OVER 50µ INCH MIN NICKEL OVERALL |
| 75568-5056 | 56 | 21.00/.827 | 15.00/.591 | 25.00/.984 | | | 75548-2056 | |
| 75568-5048 | 48 | 18.50/.728 | 12.50/.492 | 22.50/.885 | | | 75548-2048 | |
| 75568-5040 | 40 | 16.00/.630 | 10.00/.394 | 20.00/.787 | | | 75548-2040 | |
| 75568-5032 | 32 | 13.50/.531 | 7.50/.295 | 17.50/.689 | | | 75548-2032 | |
| 75568-5024 | 24 | 11.00/.433 | 5.00/.197 | 15.00/.590 | 75548-2024 | | | |
| 75568-5100 | 64 | 23.50/.925 | 17.50/.689 | 27.50/1.08 | 3.07+0.10/ .12+0.004 | 2.80/.110 PIN 8 ----- 1.80/.071 PINS 1-7 | 75548-2000 | |
| 75568-5156 | 56 | 21.00/.827 | 15.00/.591 | 25.00/.984 | | | 75548-2056 | |
| 75568-5148 | 48 | 18.50/.728 | 12.50/.492 | 22.50/.885 | | | 75548-2048 | |
| 75568-5140 | 40 | 16.00/.630 | 10.00/.394 | 20.00/.787 | | | 75548-2040 | |
| 75568-5132 | 32 | 13.50/.531 | 7.50/.295 | 17.50/.689 | | | 75548-2032 | |
| 75568-5124 | 24 | 11.00/.433 | 5.00/.197 | 15.00/.590 | 75548-2024 | | | |
| 75568-5200 | 64 | 23.50/.925 | 17.50/.689 | 27.50/1.08 | 3.84+0.10/ .15+0.004 | 2.51/.099 | 75548-2000 | |
| 75568-5256 | 56 | 21.00/.827 | 15.00/.591 | 25.00/.984 | | | 75548-2056 | |
| 75568-5248 | 48 | 18.50/.728 | 12.50/.492 | 22.50/.885 | | | 75548-2048 | |
| 75568-5240 | 40 | 16.00/.630 | 10.00/.394 | 20.00/.787 | | | 75548-2040 | |
| 75568-5232 | 32 | 13.50/.531 | 7.50/.295 | 17.50/.689 | | | 75548-2032 | |
| 75568-5224 | 24 | 11.00/.433 | 5.00/.197 | 15.00/.590 | 75548-2024 | | | |

- NOTES:
- MATERIALS:
 - HOUSING: 30% GLASS FILLED, LCP 94V-0, COLOR: BLACK
 - TERMINALS: COPPER ALLOY
 - PLATING: PER ES-88 - SEE CHART
 - LUBRICATION: EB1 IN CONTACT AREA
 - SEE CHART FOR REFERENCE DOCUMENTS
 - MODULE IS DESIGNED FOR SOLDERING TO THE PCB
 - MODULE ASSEMBLY IS RoHS COMPLIANT
 - PLUG MATES WITH RECEPTACLE ASSEMBLIES: 75548-6***
 - GATHERABILITY: +0.65/.026 X-DIRECTION
+1.30/.051 Y-DIRECTION



75568-1000
64 CIRCUIT
(SHOWN FOR REFERENCE ONLY)

| REFERENCE DOCUMENTS | |
|---------------------|--|
| PS-75431-999 | PRODUCT SPECIFICATION: PERFORMANCE AND RATINGS |
| SD-75555-*** | MODULE CONFIGURATION DRAWING |

| | | | | | | |
|---|-----------------|--|-----------------|---|--------------|--|
| ADD NOTE & DIM IEC NO: UCP2010-0528 DRAWN: JUILLES CHKO: 2009/09/23 APPROV: APATEL DATE: 2011/01/31 | QUALITY SYMBOLS | GENERAL TOLERANCES (UNLESS SPECIFIED) | DIMENSION STYLE | SCALE | DESIGN UNITS | THIRD ANGLE PROJECTION |
| | ▽=0 | 4 PLACES ±.008 | MM/IN | 2:1 | METRIC | EXTREME POWERMASS SIGNAL MODULE, PLUG |
| | ▽=0 | 3 PLACES ±.013 | | | | MOLEX INCORPORATED DOCUMENT NO. SD-75568-100 |
| | ▽=0 | 2 PLACES ±0.20 | | | SEE CHART | |
| DRAFT WHERE APPLICABLE MUST REMAIN WITHIN DIMENSIONS | | MATERIAL NO. SD-75568-1000 SHEET NO. 1 OF 1 | | THIS DRAWING CONTAINS INFORMATION THAT IS PROPRIETARY TO MOLEX INCORPORATED AND SHOULD NOT BE USED WITHOUT WRITTEN PERMISSION | | |