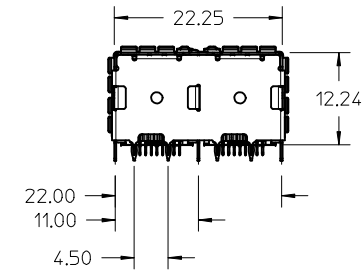
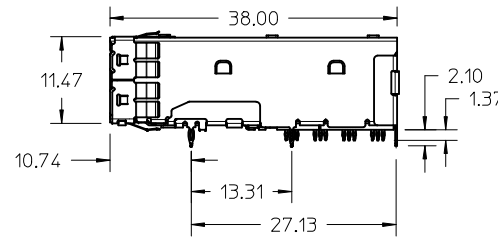
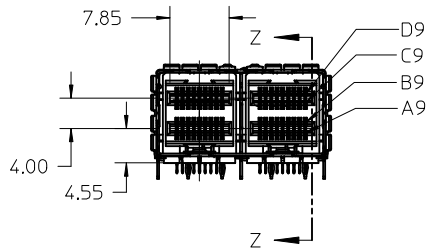


SECTION Z-Z



NOTES:

1. MATERIALS:

CONNECTOR HOUSING: HIGH TEMPERATURE THERMOPLASTIC
GLASS FILLED, UL 94V-0
EMI CAGE: NICKEL SILVER ALLOY
EMI FINGERS: COPPER ALLOY
TERMINALS: COPPER ALLOY

2. FINISHES:

EMI FINGERS: 0.50µM MIN NICKEL
CONTACT AREA: 0.76µM MIN GOLD OVER 2.54µM MIN NICKEL
TAIL AREA:

OPTION 1: 0.76µM - 1.52µM TIN/LEAD (90/10) OVER 2.54µM MIN NICKEL
OPTION 2: 0.76µM - 1.52µM TIN (LEAD FREE) OVER 2.54µM MIN NICKEL

3. PRODUCT SPECIFICATION: PS-76866-001

4. PACKAGING SPECIFICATION: PK-76866-001

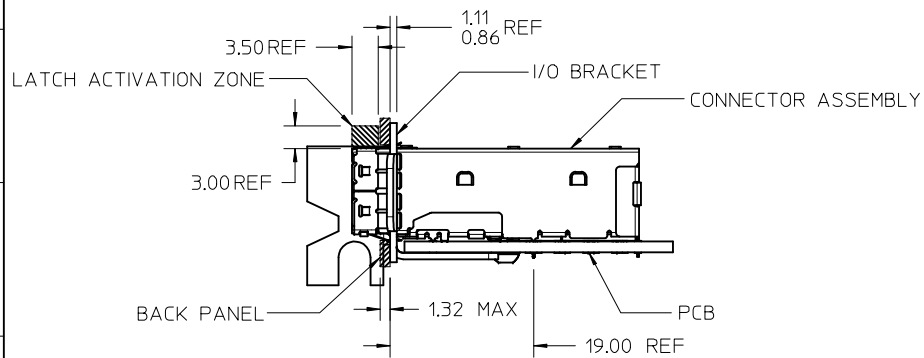
5. MATES WITH: MOLEX CABLE SERIES 111068 & 111073

6. RECOMMENDED MOUNTING HARDWARE: M2X0.4 BUTTON HEAD SCREW
MOUNTING SCREW LENGTH: PCB THICKNESS + 1.4MM MAX (0.9MM MIN)
MOUNTING HARDWARE NOT SUPPLIED

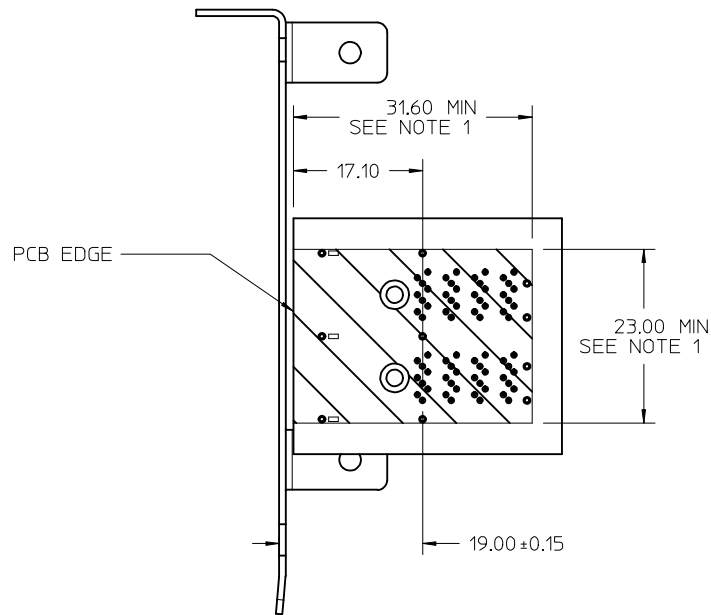
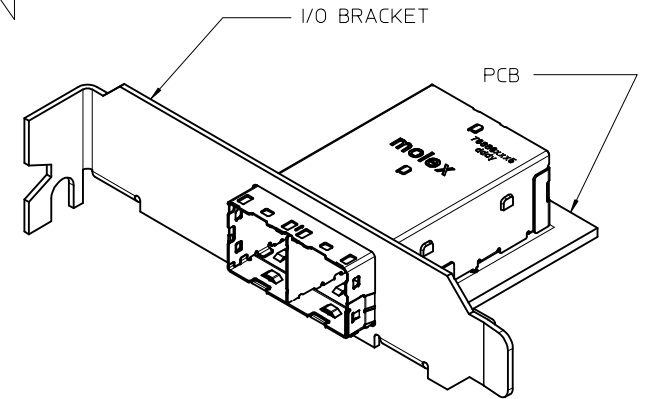
PLATING OPT.	MATERIAL NO.
OPTION 1	76866-0005
OPTION 2	76866-0015

REV NOTE REF SHT4 EC NO: UCP2013-1619 DRAWN BY: DRW:KBI:NGHAM 2012/10/25 CHKD: CHKD: APPR: TMC:LELL 2012/10/29	QUALITY SYMBOLS ▽=0 ▽=0	GENERAL TOLERANCES (UNLESS SPECIFIED)		DIMENSION STYLE MM ONLY	SCALE 2:1	DESIGN UNITS METRIC	THIRD ANGLE PROJECTION															
		<table border="1"> <thead> <tr> <th></th> <th>mm</th> <th>INCH</th> </tr> </thead> <tbody> <tr> <td>4 PLACES ±</td> <td>---</td> <td>---</td> </tr> <tr> <td>3 PLACES ±</td> <td>---</td> <td>---</td> </tr> <tr> <td>2 PLACES ±</td> <td>0.13</td> <td>---</td> </tr> <tr> <td>1 PLACE ±</td> <td>0.25</td> <td>---</td> </tr> </tbody> </table>			mm	INCH	4 PLACES ±	---	---	3 PLACES ±	---	---	2 PLACES ±	0.13	---	1 PLACE ±	0.25	---	DRAWN BY DATE KLANG 2009/04/21		TITLE IPASS PLUS HD 1X2 ASSY	
			mm	INCH																		
		4 PLACES ±	---	---																		
3 PLACES ±	---	---																				
2 PLACES ±	0.13	---																				
1 PLACE ±	0.25	---																				
CHECKED BY DATE		APPROVED BY DATE MBANAK I S 2010/01/14		MATERIAL NO. DOCUMENT NO. SEE CHART SD-76866-005																		
DRAFT WHERE APPLICABLE MUST REMAIN WITHIN DIMENSIONS		SIZE C		THIS DRAWING CONTAINS INFORMATION THAT IS PROPRIETARY TO MOLEX INCORPORATED AND SHOULD NOT BE USED WITHOUT WRITTEN PERMISSION																		

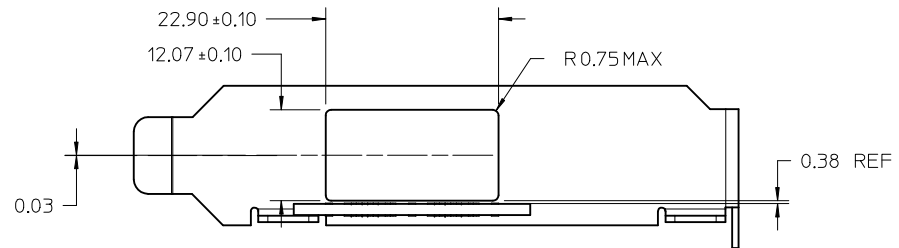
PCI ADD-IN CARD APPLICATION



ASSEMBLED VIEW
PCI ADD-IN CARD APPLICATION



PCI ADD-IN CARD APPLICATIONS



I/O BRACKET CUT OUT
(BRACKET NOT INCLUDED)

NOTES:
1. CONNECTOR KEEPOUT AREA

SEE SHEET 1 EC NO: UCP2013-1619 DRAWN BY: DRWINKBINGHAM 2012/10/25 CHKD: APPR: TMC/LELL 2012/10/29 D4	QUALITY SYMBOLS ▽=0 ▽=0	GENERAL TOLERANCES (UNLESS SPECIFIED) mm INCH 4 PLACES ± --- ± --- 3 PLACES ± --- ± --- 2 PLACES ± 0.13 ± --- 1 PLACE ± 0.25 ± --- ANGULAR ± 1/2°	DIMENSION STYLE MM ONLY DRAWN BY: KLANG DATE: 2009/04/21 CHECKED BY: DATE:	SCALE 2:1 TITLE IPASS PLUS HD 1X2 ASSY	DESIGN UNITS METRIC THIRD ANGLE PROJECTION
	DRAFT WHERE APPLICABLE MUST REMAIN WITHIN DIMENSIONS		APPROVED BY: MBANAK I S DATE: 2010/01/14 MATERIAL NO. SEE CHART DOCUMENT NO. SD-76866-005	SHEET NO. 2 OF 7	
	THIS DRAWING CONTAINS INFORMATION THAT IS PROPRIETARY TO MOLEX INCORPORATED AND SHOULD NOT BE USED WITHOUT WRITTEN PERMISSION				
	MOLEX INCORPORATED				

ALL OTHER (M/B) APPLICATIONS

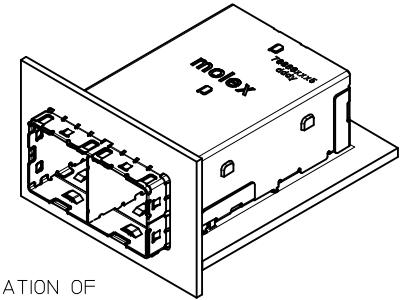
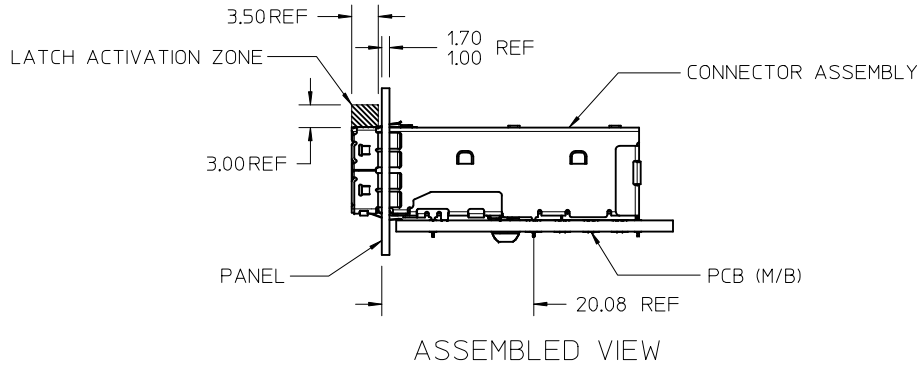
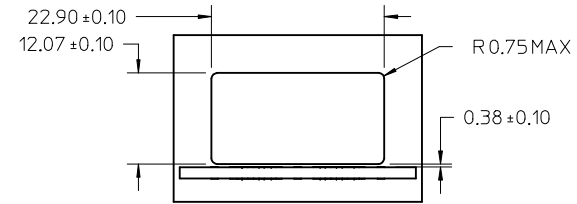
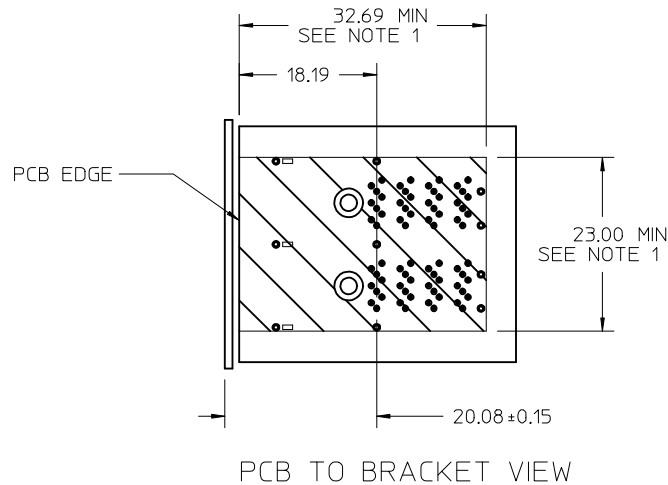


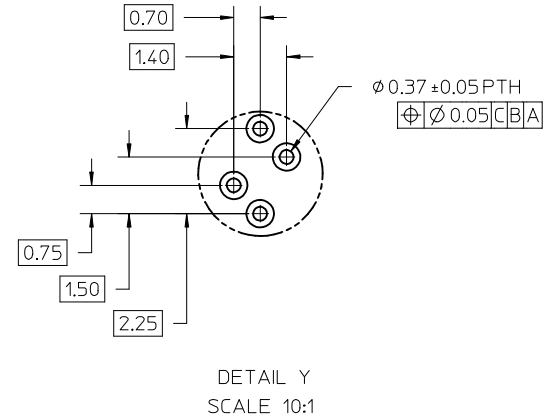
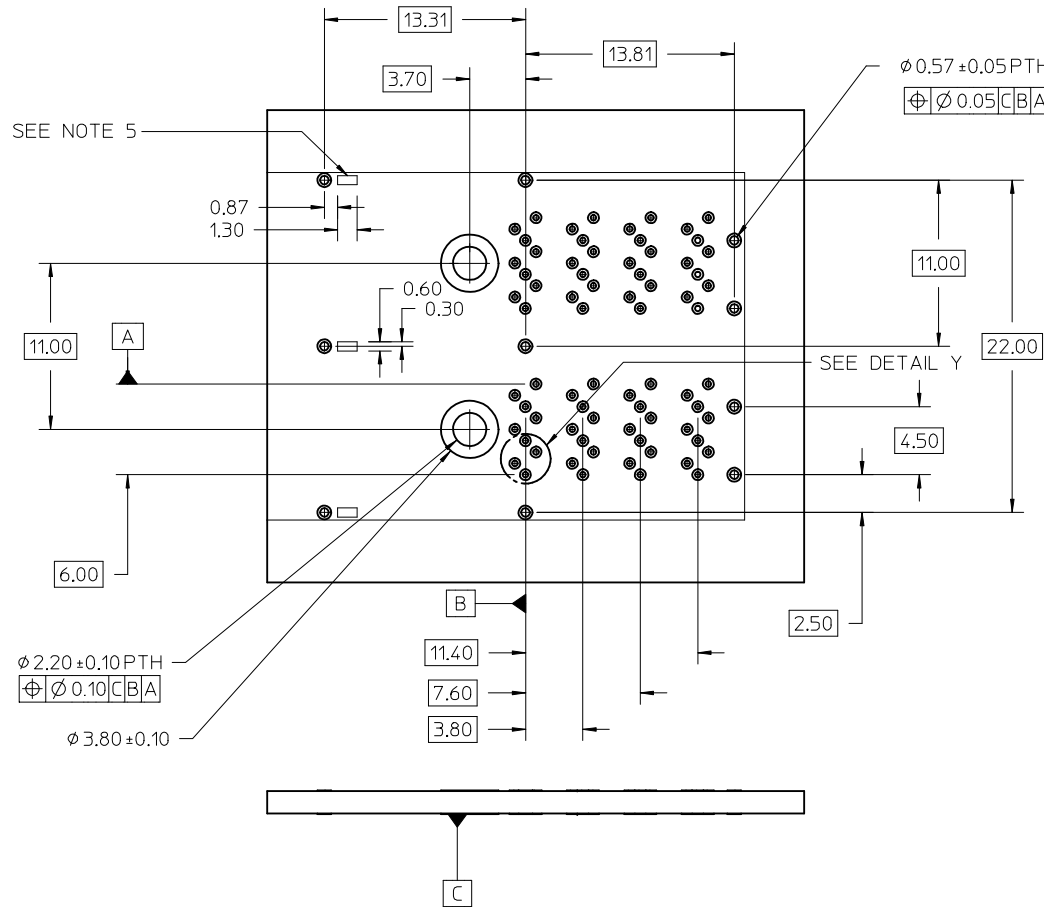
ILLUSTRATION OF ALL OTHER M/B BRACKET APPLICATION



NOTES:
1. CONNECTOR KEEPOUT AREA

SEE SHEET 1 EC NO: UCP2013-1619 DRAWN BY: INGHAM 2012/10/25 CHKD: APPR: TMCCLELL 2012/10/29 REV:	QUALITY SYMBOLS	GENERAL TOLERANCES (UNLESS SPECIFIED)	DIMENSION STYLE MM ONLY	SCALE 2:1	DESIGN UNITS METRIC	THIRD ANGLE PROJECTION
	▽=0	mm INCH	DRAWN BY DATE KLANG 2009/04/21	TITLE IPASS PLUS HD 1X2 ASSY		
	▽=0	4 PLACES ± --- ± ---	CHECKED BY DATE	APPROVED BY DATE MBANAK I S 2010/01/14		
	▽=0	3 PLACES ± --- ± ---	MATERIAL NO. DOCUMENT NO. SEE CHART SD-76866-005			
		2 PLACES ± 0.13 ± ---	SHEET NO. 3 OF 7			
		1 PLACE ± 0.25 ± ---	SIZE C THIS DRAWING CONTAINS INFORMATION THAT IS PROPRIETARY TO MOLEX INCORPORATED AND SHOULD NOT BE USED WITHOUT WRITTEN PERMISSION			
		ANGULAR ± 1/2°				
		DRAFT WHERE APPLICABLE MUST REMAIN WITHIN DIMENSIONS				

RECOMMENDED FOOTPRINT



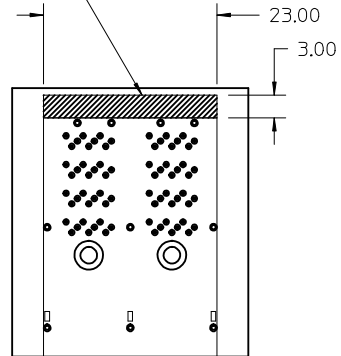
NOTES:

1. RECOMMENDED DRILL SIZE AND ANNULAR RING FOR A 0.37 ϕ FINISHED PTH - REFER TO APPLICATION SPECIFICATION AS-76866-001
2. MINIMUM RECOMMENDED SPACING: 25.00MM
3. MINIMUM PCB THICKNESS: 1.57MM
4. RECOMMENDED DRILL SIZE AND ANNULAR RING FOR A 0.57 ϕ FINISHED PTH - REFER TO APPLICATION SPECIFICATION AS-76866-001
5. CAGE STAND OFF AREA, NO TRACES ON SURFACE OF PCB IN THESE AREAS

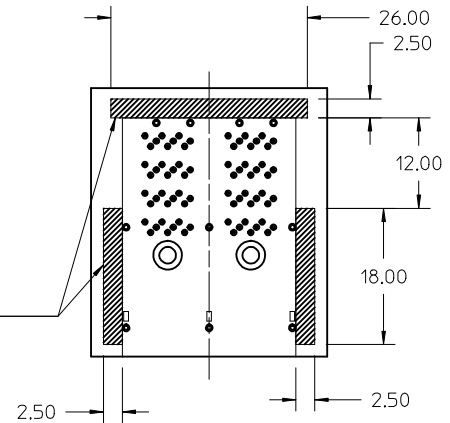
SEE SHEET 1 EC NO: UCP2013-1619 DRAWN BY: DRWINKBINGHAM 2012/10/25 CHKD: APPR: TMC/LELL 2012/10/29 D4	QUALITY SYMBOLS ▽=0 ▽=0	GENERAL TOLERANCES (UNLESS SPECIFIED) <table border="1"> <thead> <tr> <th></th> <th>mm</th> <th>INCH</th> </tr> </thead> <tbody> <tr> <td>4 PLACES</td> <td>± 0.13</td> <td>± 0.005</td> </tr> <tr> <td>3 PLACES</td> <td>± 0.25</td> <td>± 0.010</td> </tr> <tr> <td>2 PLACES</td> <td>± 0.50</td> <td>± 0.020</td> </tr> <tr> <td>1 PLACE</td> <td>± 1.27</td> <td>± 0.050</td> </tr> </tbody> </table> ANGULAR ±1/2°		mm	INCH	4 PLACES	± 0.13	± 0.005	3 PLACES	± 0.25	± 0.010	2 PLACES	± 0.50	± 0.020	1 PLACE	± 1.27	± 0.050	DIMENSION STYLE MM ONLY DRAWN BY: KLANG DATE: 2009/04/21 CHECKED BY: DATE:	SCALE 4:1 DESIGN UNITS METRIC THIRD ANGLE PROJECTION	TITLE IPASS PLUS HD 1X2 ASSY
		mm	INCH																	
	4 PLACES	± 0.13	± 0.005																	
	3 PLACES	± 0.25	± 0.010																	
2 PLACES	± 0.50	± 0.020																		
1 PLACE	± 1.27	± 0.050																		
APPROVED BY: MBANAKIS DATE: 2010/01/14 MATERIAL NO.	MOLEX INCORPORATED DOCUMENT NO.	SHEET NO. 4 OF 7																		
DRAFT WHERE APPLICABLE MUST REMAIN WITHIN DIMENSIONS			SEE CHART	MOLEX INCORPORATED SD-76866-005																
THIS DRAWING CONTAINS INFORMATION THAT IS PROPRIETARY TO MOLEX INCORPORATED AND SHOULD NOT BE USED WITHOUT WRITTEN PERMISSION																				

RECOMMENDED TOOLING KEEP OUT AREAS

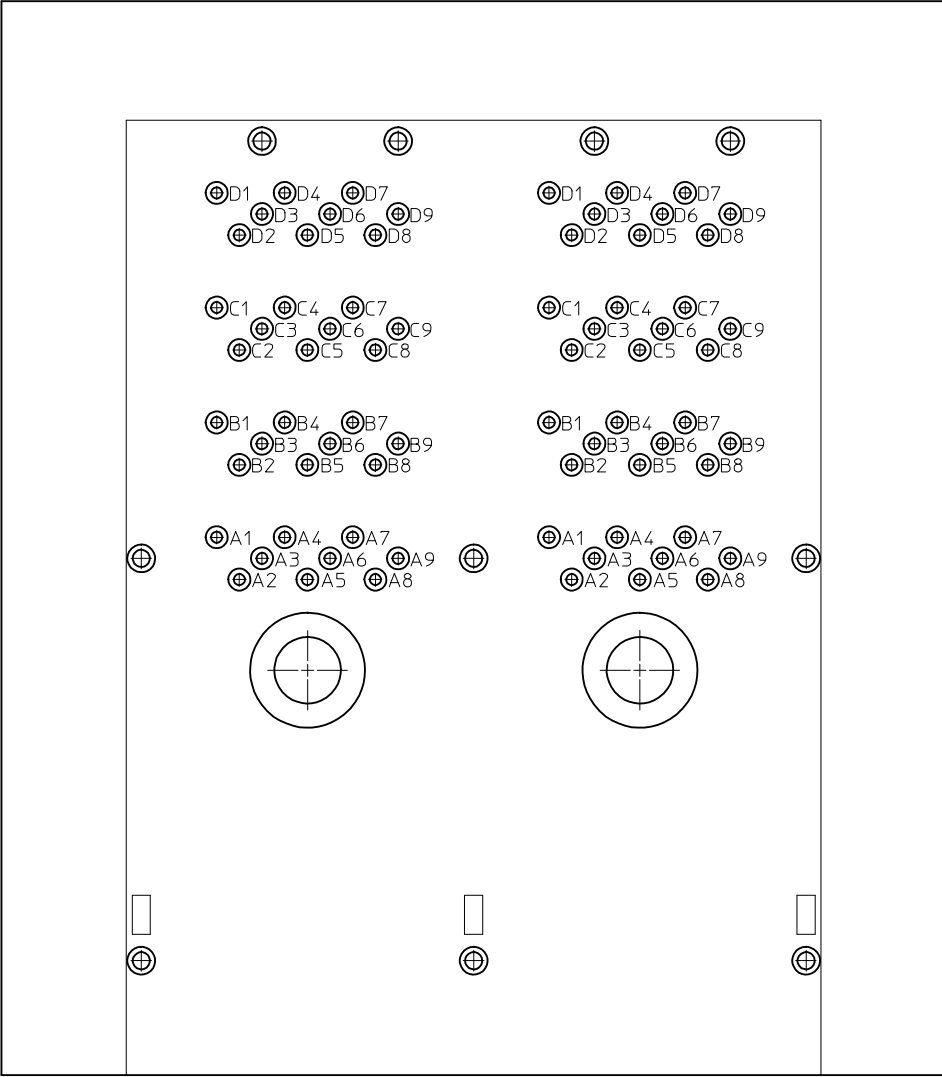
RECOMMENDED INSERTION TOOL
KEEP OUT AREA
NO COMPONENTS IN THIS AREA
MORE THAN 7.50 mm TALL



RECOMMENDED EXTRACTION TOOL
KEEP OUT AREA
NO COMPONENTS IN THESE AREAS

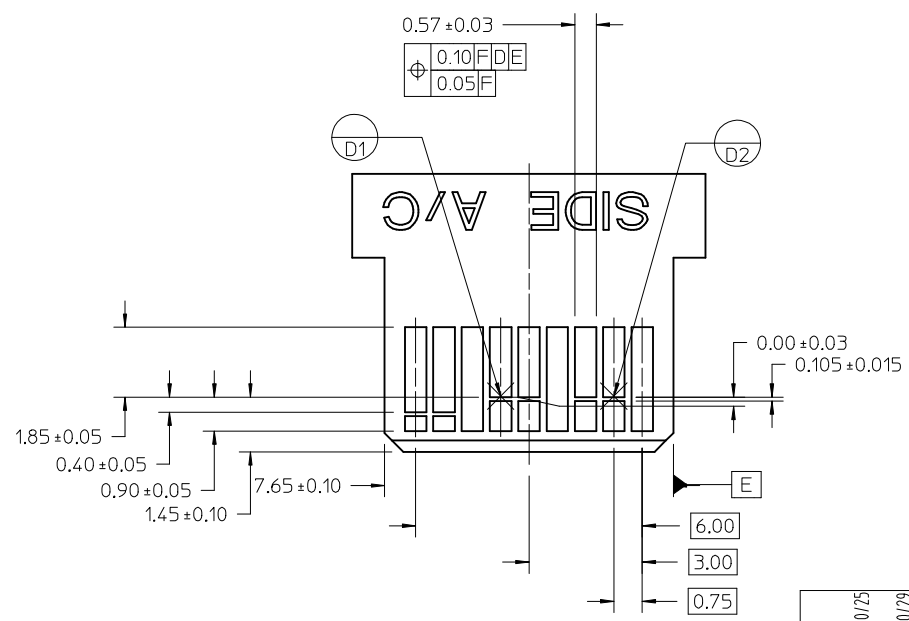
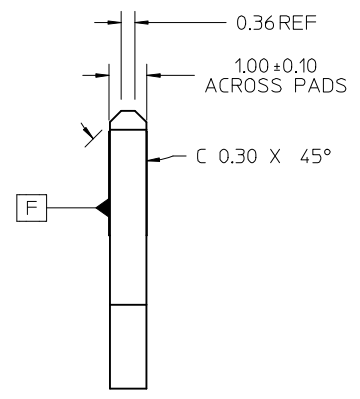
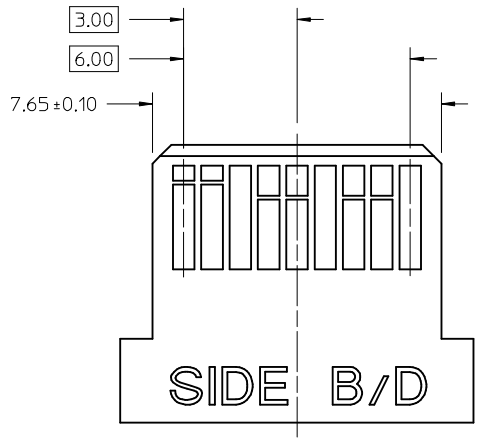


SEE SHEET 1 EC NO: UCP2013-1619 DRAWN BY: DRWINKBINGHAM 2012/10/25 CHKD: APPR: TMCLELL 2012/10/29	QUALITY SYMBOLS	GENERAL TOLERANCES (UNLESS SPECIFIED)		DIMENSION STYLE	SCALE	DESIGN UNITS	THIRD ANGLE PROJECTION
	$\nabla = 0$	mm	INCH	MM ONLY	2:1	METRIC	
	$\nabla = 0$	4 PLACES ± ---	± ---	DRAWN BY	DATE	TITLE	
	$\nabla = 0$	3 PLACES ± ---	± ---	KLANG	2009/04/21	IPASS PLUS HD 1X2 ASSY	
	2 PLACES ± 0.13	± ---	CHECKED BY	DATE	APPROVED BY		
	1 PLACE ± 0.25	± ---			DATE		
	ANGULAR ± 1/2°		APPROVED BY		DATE		
	DRAFT WHERE APPLICABLE MUST REMAIN WITHIN DIMENSIONS		MBANAKIS		2010/01/14		
			MATERIAL NO.		DOCUMENT NO.		
			SEE CHART		MOLEX INCORPORATED		
			SIZE		SD-76866-005		
			THIS DRAWING CONTAINS INFORMATION THAT IS PROPRIETARY TO MOLEX INCORPORATED AND SHOULD NOT BE USED WITHOUT WRITTEN PERMISSION		SHEET NO. 5 OF 7		



SEE SHEET 1 EC NO: UCP2013-1619 DRAWN BY: INGHAM 2012/10/25 CHKD: APPR: TMCLELL 2012/10/29	QUALITY SYMBOLS ▼=0 ▽=0	GENERAL TOLERANCES (UNLESS SPECIFIED) <table border="1"> <thead> <tr> <th></th> <th>mm</th> <th>INCH</th> </tr> </thead> <tbody> <tr> <td>4 PLACES</td> <td>± ---</td> <td>± ---</td> </tr> <tr> <td>3 PLACES</td> <td>± ---</td> <td>± ---</td> </tr> <tr> <td>2 PLACES</td> <td>± 0.13</td> <td>± ---</td> </tr> <tr> <td>1 PLACE</td> <td>± 0.25</td> <td>± ---</td> </tr> </tbody> </table>		mm	INCH	4 PLACES	± ---	± ---	3 PLACES	± ---	± ---	2 PLACES	± 0.13	± ---	1 PLACE	± 0.25	± ---	DIMENSION STYLE MM ONLY	SCALE 8:1	DESIGN UNITS METRIC	THIRD ANGLE PROJECTION
		mm	INCH																		
	4 PLACES	± ---	± ---																		
	3 PLACES	± ---	± ---																		
2 PLACES	± 0.13	± ---																			
1 PLACE	± 0.25	± ---																			
DESCRIPTION D4	DRAFT WHERE APPLICABLE MUST REMAIN WITHIN DIMENSIONS	DRAWN BY KLANG	DATE 2009/04/21	TITLE IPASS PLUS HD 1X2 ASSY																	
		APPROVED BY MBANAKIS	DATE 2010/01/14	MOLEX INCORPORATED																	
		MATERIAL NO. SEE CHART	DOCUMENT NO. SD-76866-005	SHEET NO. 6 OF 7																	

THIS DRAWING CONTAINS INFORMATION THAT IS PROPRIETARY TO MOLEX INCORPORATED AND SHOULD NOT BE USED WITHOUT WRITTEN PERMISSION



- NOTES:
- 0.05 MINIMUM KEEP OUT FOR SOLDER MASK AROUND ALL PADS
 - DATUM D TARGETS ARE DEFINED BY THE RESPECTIVE PAD CENTER LINES AND THE LEADING EDGE OF THE TARGET PADS

SEE SHEET 1 EC NO: UCP2013-1619 DRAWN BY: DRANKINGHAM 2012/10/25 CHKD: APPR: TMCLELL 2012/10/29	QUALITY SYMBOLS	GENERAL TOLERANCES (UNLESS SPECIFIED)	DIMENSION STYLE	SCALE	DESIGN UNITS	THIRD ANGLE PROJECTION
	▽=0	mm INCH	MM ONLY	10:1	METRIC	
	▽=0	4 PLACES ± --- ± --- 3 PLACES ± --- ± --- 2 PLACES ± 0.13 ± --- 1 PLACE ± 0.25 ± ---	DRAWN BY DATE KLANG 2009/04/21	TITLE IPASS PLUS HD 1X2 ASSY		
		ANGULAR ±1/2°	CHECKED BY DATE	APPROVED BY DATE MBANAKIS 2010/01/14	MOLEX INCORPORATED	
D4	DESCRIPTION	DRAFT WHERE APPLICABLE MUST REMAIN WITHIN DIMENSIONS	SIZE C	SEE CHART	DOCUMENT NO. SD-76866-005	THIS DRAWING CONTAINS INFORMATION THAT IS PROPRIETARY TO MOLEX INCORPORATED AND SHOULD NOT BE USED WITHOUT WRITTEN PERMISSION