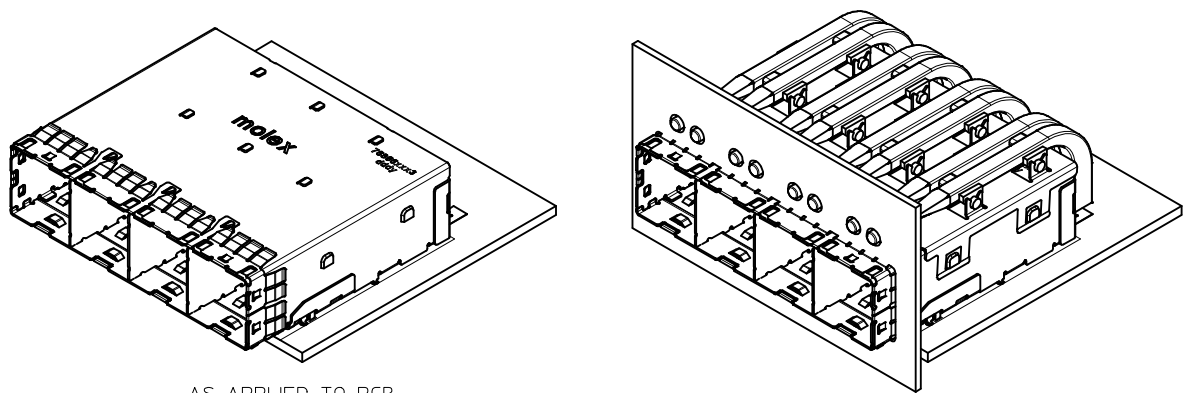


NOTES:

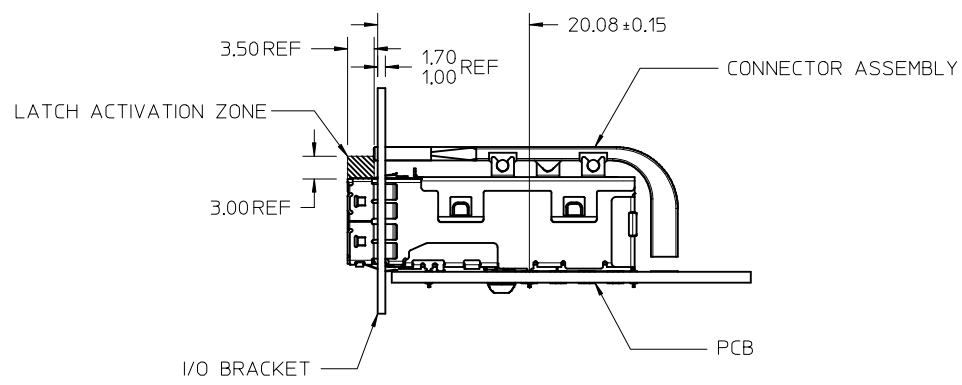
1. MATERIALS:
  - CONNECTOR HOUSING: HIGH TEMPERATURE THERMOPLASTIC GLASS FILLED, UL 94V-0
  - EMI CAGE: NICKEL SILVER ALLOY
  - EMI FINGERS: COPPER ALLOY
  - TERMINALS: COPPER ALLOY
  - LIGHT PIPES: HALOGEN FREE, CLEAR POLYCARBONATE
2. FINISHES:
  - EMI FINGERS: 0.50µM MIN NICKEL
  - CONTACT AREA: 0.76µM MIN GOLD OVER 2.54µM MIN NICKEL
  - TAIL AREA:
    - OPTION 1: 0.76µM-1.52µM TIN/LEAD (90/10) OVER 2.54µM MIN NICKEL
    - OPTION 2: 0.76µM-1.52µM TIN (LEAD FREE) OVER 2.54µM MIN NICKEL
3. PRODUCT SPECIFICATION: PS-76866-001
4. PACKAGING SPECIFICATION: PK-76866-002
  - CONNECTORS WILL BE IN ONE BOX
  - LIGHT PIPE ASSEMBLIES WILL BE IN ONE BOX
  - BOTH BOXES WILL BE IN A MASTER CARTON
5. MATES WITH: MOLEX CABLE SERIES 111068 & 111073
6. RECOMMENDED MOUNTING HARDWARE: M2X0.4 BUTTON HEAD SCREW
  - MOUNTING SCREW LENGTH: PCB THICKNESS + 1.4MM MAX (0.9MM MIN)
  - MOUNTING HARDWARE NOT SUPPLIED
7. LIGHT PIPE ASSEMBLY APPLIED AFTER ASSEMBLY TO PCB

PLATING OPT.	MATERIAL NO.
OPTION 1	76866-0023
OPTION 2	76866-0123

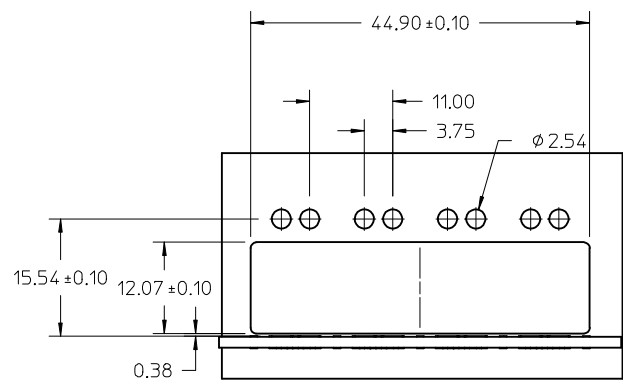
UPDATED MATL SPEC EC NO: UCP2014-1665 DRWN:TMCCLELL 2013/10/15 CHKD:TMCCLELLAND 2013/10/16 APPR:MBANAKIS 2013/10/17	QUALITY SYMBOLS	GENERAL TOLERANCES (UNLESS SPECIFIED)		DIMENSION STYLE	SCALE	DESIGN UNITS	THIRD ANGLE PROJECTION
	▽=0	mm	INCH	MM ONLY	2:1	METRIC	☉
	▽=0	4 PLACES ± ---	± ---	DRAWN BY	DATE	TITLE	
	▽=0	3 PLACES ± ---	± ---	KLANG	2009/05/01	IPASS PLUS HD 1X4 ASSEMBLY LIGHT PIPE	
		2 PLACES ± 0.13	± ---	CHECKED BY	DATE	<b>molex</b> SD-76866-023	
		1 PLACE ± 0.25	± ---	TMCCLELLAND	2013/10/16		
		0 PLACE ±	±	APPROVED BY	DATE	DOCUMENT NO.	
				MBANAKIS	2010/01/14	SD-76866-023	
				MATERIAL NO.		SHEET NO.	
				SEE CHART		1 OF 6	
				DRAFT WHERE APPLICABLE MUST REMAIN WITHIN DIMENSIONS			
				THIS DRAWING CONTAINS INFORMATION THAT IS PROPRIETARY TO MOLEX INCORPORATED AND SHOULD NOT BE USED WITHOUT WRITTEN PERMISSION			



AS APPLIED TO PCB



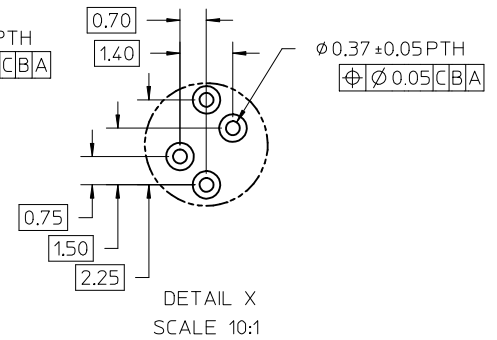
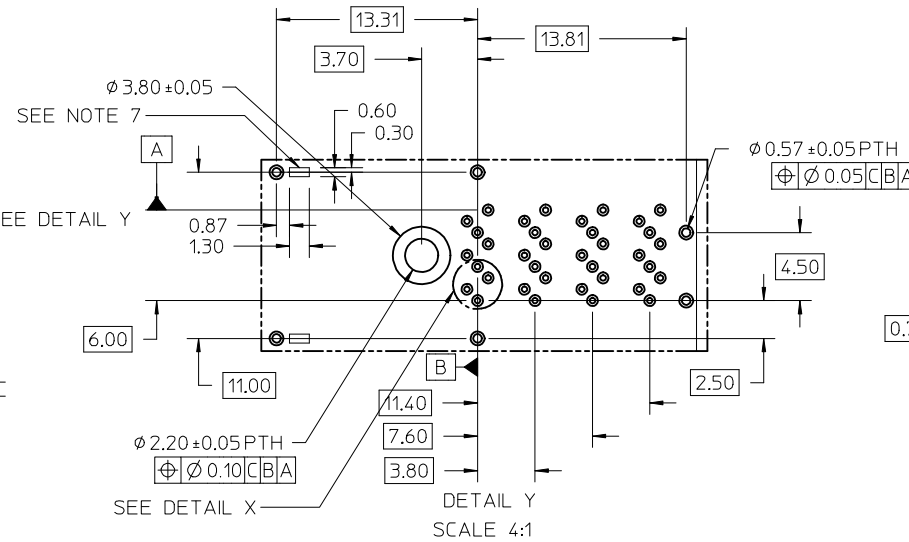
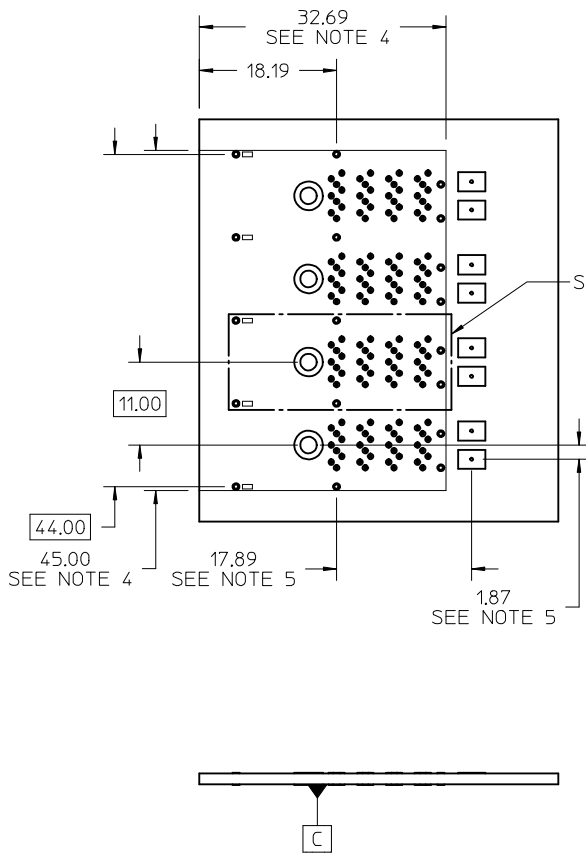
ASSEMBLED VIEW



I/O BRACKET CUT OUT  
(BRACKET NOT SUPPLIED)

SEE SHEET 1 EC NO: UCP2014-1665 DRWN:TMCCLELL 2013/10/15 CHKD:TMCCLELLAND 2013/10/16 APPR:MBANAKIS 2013/10/17	QUALITY SYMBOLS ∇=0 ∇=0 ∇=0	GENERAL TOLERANCES (UNLESS SPECIFIED) mm INCH 4 PLACES ± --- ± --- 3 PLACES ± --- ± --- 2 PLACES ± 0.13 ± --- 1 PLACE ± 0.25 ± --- 0 PLACE ± ±	DIMENSION STYLE MM ONLY DRAWN BY DATE KLANG 2009/05/01 CHECKED BY DATE TMCCLELLAND 2013/10/16 APPROVED BY DATE MBANAKIS 2010/01/14	SCALE 2:1 DESIGN UNITS METRIC THIRD ANGLE PROJECTION	TITLE IPASS PLUS HD 1X4 ASSEMBLY LIGHT PIPE <b>molex</b>	MATERIAL NO. SEE CHART DOCUMENT NO. SD-76866-023	SHEET NO. 2 OF 6
	DRAFT WHERE APPLICABLE MUST REMAIN WITHIN DIMENSIONS	ANGULAR ±1/2°	SIZE C	THIS DRAWING CONTAINS INFORMATION THAT IS PROPRIETARY TO MOLEX INCORPORATED AND SHOULD NOT BE USED WITHOUT WRITTEN PERMISSION			
	REV D5	DESCRIPTION					

# RECOMMENDED FOOTPRINT



**NOTES:**

1. RECOMMENDED DRILL SIZE AND ANNULAR RING FOR 0.37 $\phi$  FINISHED PTH - REFER TO APPLICATION SPECIFICATION AS-76866-001
2. MINIMUM RECOMMENDED SPACING: 47.00MM
3. MINIMUM PCB THICKNESS: 1.57MM
4. CONNECTOR KEEPOUT AREA
5. LOCATION OF LED CENTER LINE
6. RECOMMENDED DRILL SIZE AND ANNULAR RING FOR 0.57 $\phi$  FINISHED PTH - REFER TO APPLICATION SPECIFICATION AS-76866-001
7. CAGE STAND OFF AREA, NO TRACES ON SURFACE OF PCB IN THESE AREAS

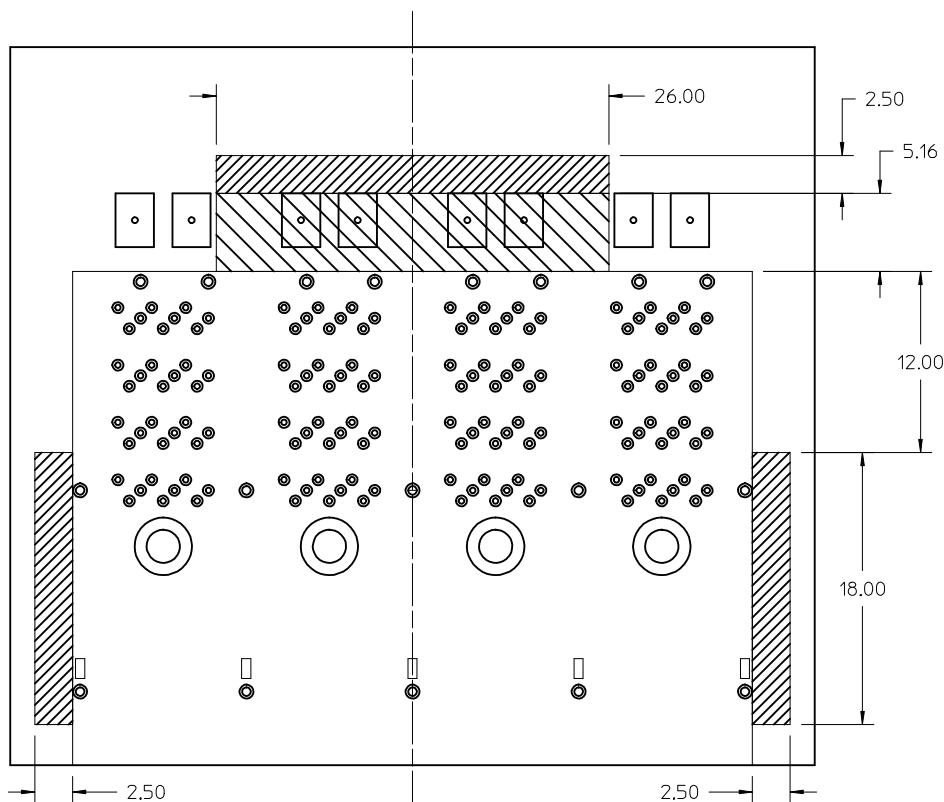
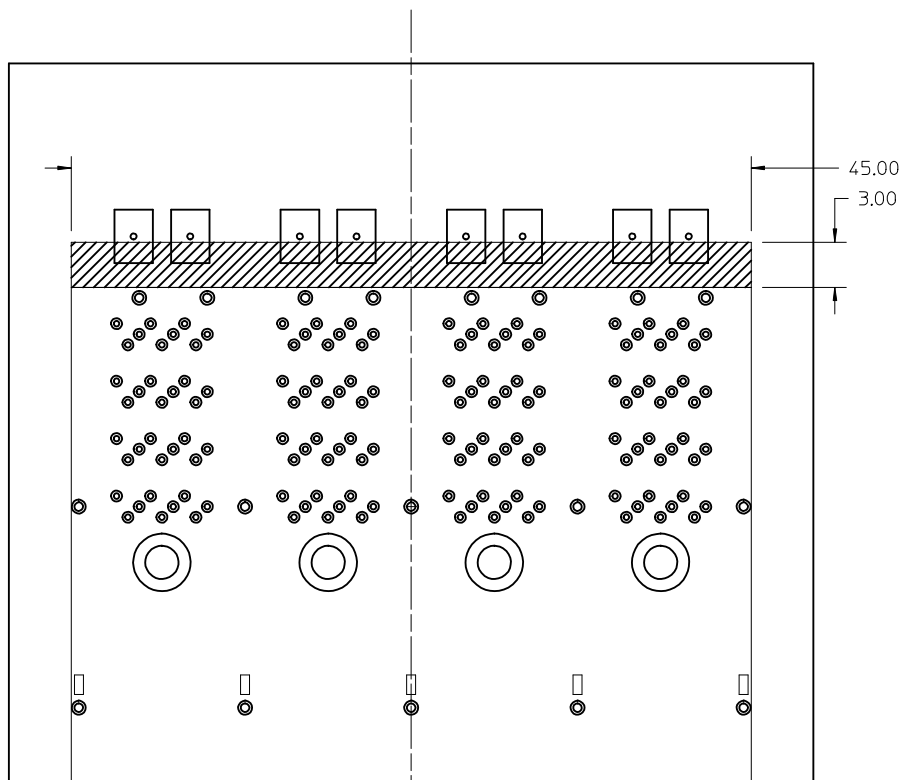
SEE SHEET 1 EC NO: UCP2014-1665 DRWN:TMCCLELL 2013/10/15 CHKD:TMCCLELLAND 2013/10/16 APPR:MBANAKIS 2013/10/17	QUALITY SYMBOLS ▽=0 ▽=0 ▽=0	GENERAL TOLERANCES (UNLESS SPECIFIED)		DIMENSION STYLE <b>MM ONLY</b>	SCALE <b>2:1</b>	DESIGN UNITS <b>METRIC</b>	THIRD ANGLE PROJECTION	
				DRAWN BY KLANG	DATE 2009/05/01	TITLE <b>IPASS PLUS HD 1X4 ASSEMBLY LIGHT PIPE</b> <b>molex</b>		
				CHECKED BY TMCCLELLAND	DATE 2013/10/16			
				APPROVED BY MBANAKIS		DATE 2010/01/14	DOCUMENT NO. <b>SD-76866-023</b>	
		ANGULAR $\pm 1/2^\circ$		MATERIAL NO.		SHEET NO. 3 OF 6		
		DRAFT WHERE APPLICABLE MUST REMAIN WITHIN DIMENSIONS		SEE CHART				
				THIS DRAWING CONTAINS INFORMATION THAT IS PROPRIETARY TO MOLEX INCORPORATED AND SHOULD NOT BE USED WITHOUT WRITTEN PERMISSION				

# RECOMMENDED TOOLING KEEP OUT AREAS

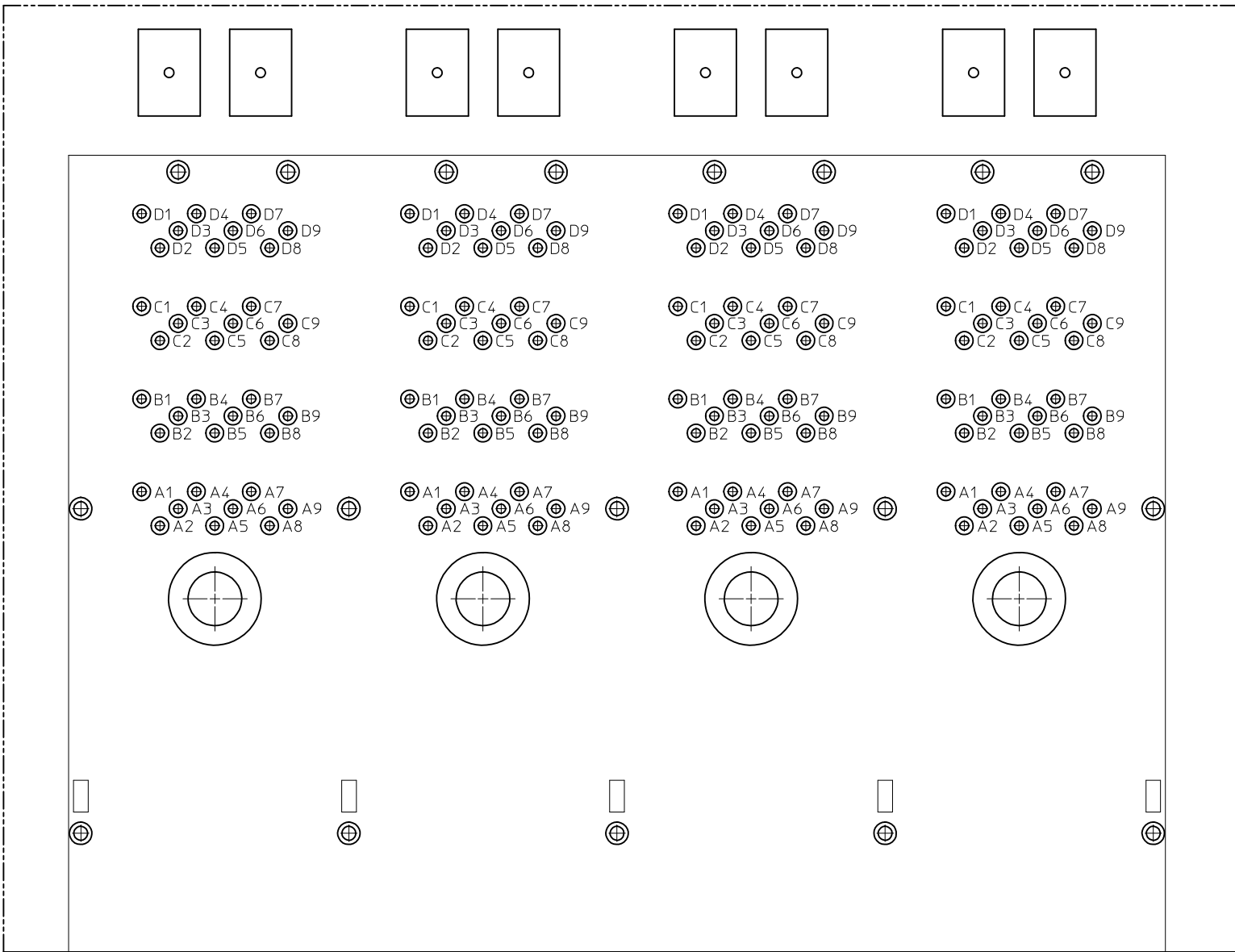
RECOMMENDED INSERTION TOOL  
KEEP OUT AREA  
NO COMPONENTS IN THIS AREA  
MORE THAN 7.50 mm TALL



RECOMMENDED EXTRACTION TOOL  
KEEP OUT AREA  
NO COMPONENTS IN THESE AREAS  
NO COMPONENTS IN THIS AREA  
MORE THAN 5.00 mm TALL

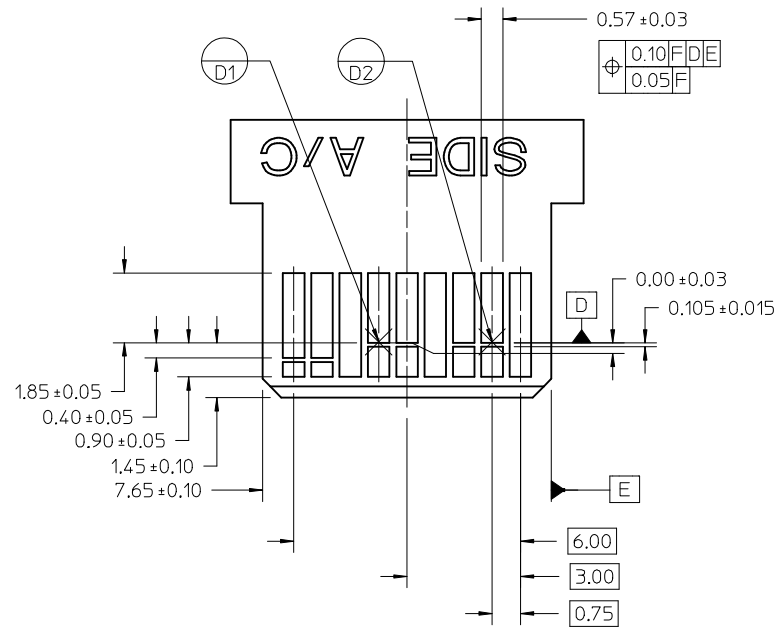
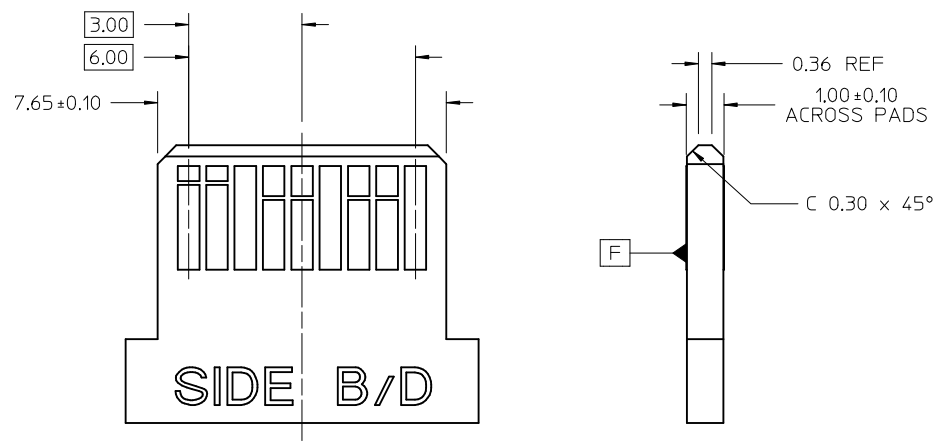


SEE SHEET 1 EEC NO: UCP2014-1665 DRWN:TMCCLELL 2013/10/15 CHKD:TMCCLELLAND 2013/10/16 APPR:MBANAKIS 2013/10/17	QUALITY SYMBOLS	GENERAL TOLERANCES (UNLESS SPECIFIED)	DIMENSION STYLE MM ONLY	SCALE 4:1	DESIGN UNITS METRIC	THIRD ANGLE PROJECTION
	▽=0	mm INCH	DRAWN BY DATE KLANG 2009/05/01	TITLE IPASS PLUS HD 1X4 ASSEMBLY LIGHT PIPE		
	▽=0	4 PLACES ± --- ± ---	CHECKED BY DATE TMCCLELLAND 2013/10/16	<b>molex</b> DOCUMENT NO. SD-76866-023 SHEET NO. 4 OF 6		
	▽=0	3 PLACES ± --- ± ---	APPROVED BY DATE MBANAKIS 2010/01/14			
REV	DESCRIPTION	0 PLACE ± --- ± ---	MATERIAL NO.	THIS DRAWING CONTAINS INFORMATION THAT IS PROPRIETARY TO MOLEX INCORPORATED AND SHOULD NOT BE USED WITHOUT WRITTEN PERMISSION		
D5		ANGULAR ±1/2°	SEE CHART			
		DRAFT WHERE APPLICABLE MUST REMAIN WITHIN DIMENSIONS	SIZE C			



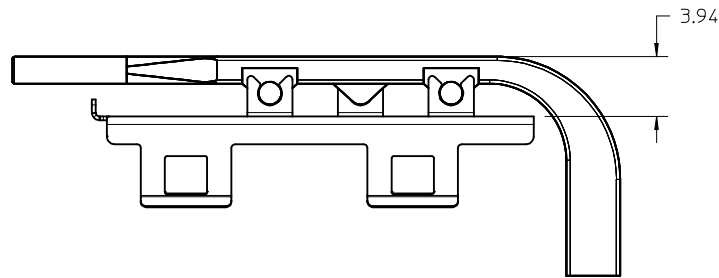
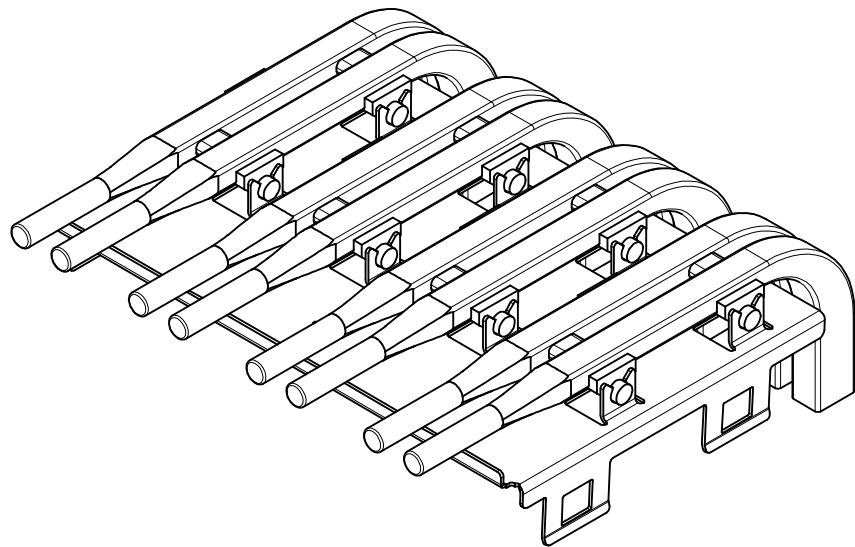
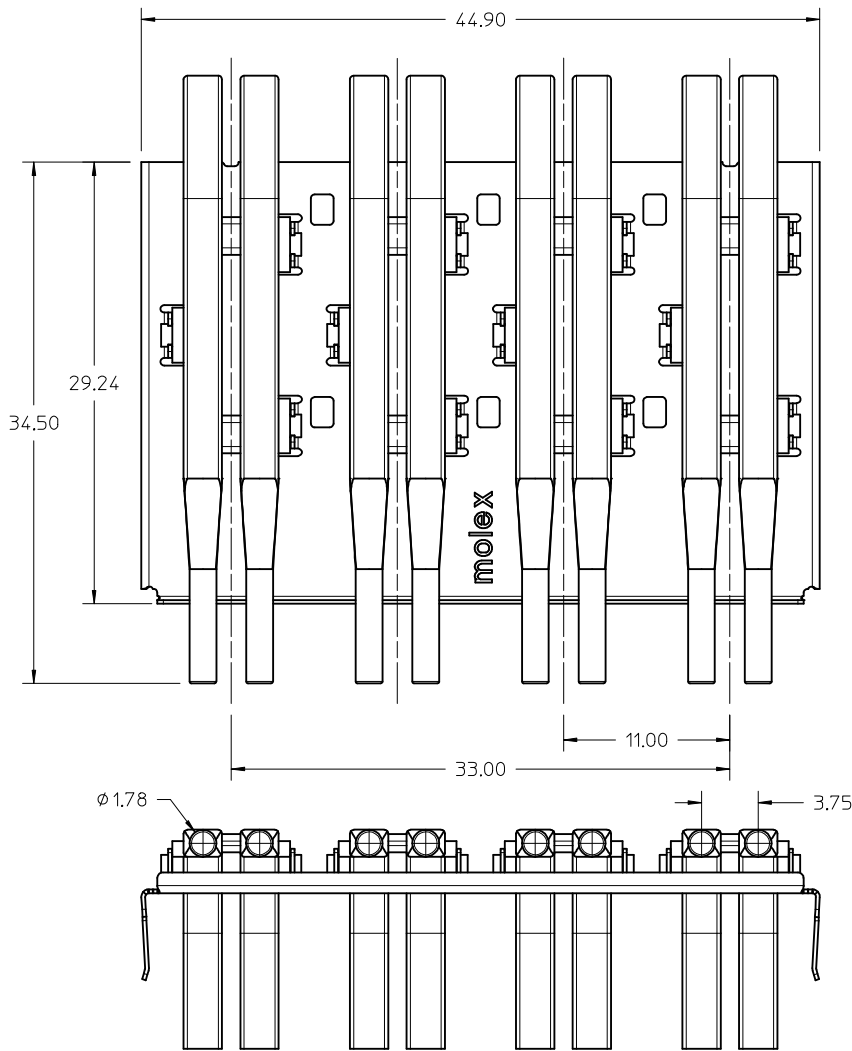
Partial1  
SCALE 8:1

SEE SHEET 1 IEC NO: UCP2014-1665 DRWN:TMCCLELL 2013/10/15 CHKD:TMCCLELLAND 2013/10/16 APPR:MBANAKIS 2013/10/17 REV D5	QUALITY SYMBOLS ▽=0 ▽=0 ▽=0	GENERAL TOLERANCES (UNLESS SPECIFIED) <table border="1"> <tr> <td></td> <td>mm</td> <td>INCH</td> </tr> <tr> <td>4 PLACES</td> <td>± ---</td> <td>± ---</td> </tr> <tr> <td>3 PLACES</td> <td>± ---</td> <td>± ---</td> </tr> <tr> <td>2 PLACES</td> <td>± 0.13</td> <td>± ---</td> </tr> <tr> <td>1 PLACE</td> <td>± 0.25</td> <td>± ---</td> </tr> <tr> <td>0 PLACE</td> <td>±</td> <td>±</td> </tr> </table>		mm	INCH	4 PLACES	± ---	± ---	3 PLACES	± ---	± ---	2 PLACES	± 0.13	± ---	1 PLACE	± 0.25	± ---	0 PLACE	±	±	DIMENSION STYLE <b>MM ONLY</b> DRAWN BY DATE KLANG 2009/05/01 CHECKED BY DATE TMCCLELLAND 2013/10/16 APPROVED BY DATE MBANAKIS 2010/01/14	SCALE <b>8:1</b> DESIGN UNITS METRIC	THIRD ANGLE PROJECTION IPASS PLUS HD 1X4 ASSEMBLY LIGHT PIPE <b>molex</b> DOCUMENT NO. SD-76866-023	SHEET NO. 5 OF 6
		mm	INCH																					
	4 PLACES	± ---	± ---																					
	3 PLACES	± ---	± ---																					
	2 PLACES	± 0.13	± ---																					
1 PLACE	± 0.25	± ---																						
0 PLACE	±	±																						
DRAFT WHERE APPLICABLE MUST REMAIN WITHIN DIMENSIONS		ANGULAR ±1/2°	MATERIAL NO.	SE CHART		THIS DRAWING CONTAINS INFORMATION THAT IS PROPRIETARY TO MOLEX INCORPORATED AND SHOULD NOT BE USED WITHOUT WRITTEN PERMISSION																		
			SIZE C																					



- NOTES:
- 0.05 MINIMUM KEEP OUT FOR SOLDER MASK AROUND ALL PADS
  - DATUM D TARGETS ARE DEFINED BY THE RESPECTIVE PAD CENTER LINES AND THE LEADING EDGE OF THE TARGET PADS

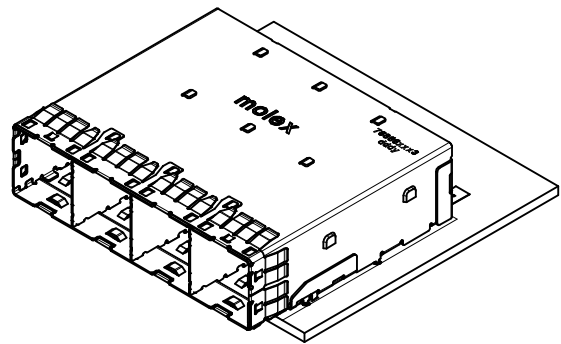
SEE SHEET 1 EC NO: UCP2014-1665 DRWN:TMCCLELL 2013/10/15 CHKD:TMCCLELLAND 2013/10/16 APPR:MBANAKIS 2013/10/17	QUALITY SYMBOLS	GENERAL TOLERANCES (UNLESS SPECIFIED)		DIMENSION STYLE	SCALE	DESIGN UNITS	THIRD ANGLE PROJECTION
	▽=0	mm	INCH	MM ONLY	4:1	METRIC	
	▽=0	4 PLACES ± ---	± ---	DRAWN BY	DATE	TITLE	
	▽=0	3 PLACES ± ---	± ---	KLANG	2009/05/01	IPASS PLUS HD 1X4 ASSEMBLY LIGHT PIPE	
	▽=0	2 PLACES ± 0.13	± ---	CHECKED BY	DATE	molex	
REV	DESCRIPTION	1 PLACE ± 0.25	± ---	APPROVED BY	DATE	DOCUMENT NO.	SHEET NO.
D5		0 PLACE ±	±	MBANAKIS	2010/01/14	SD-76866-023	6 OF 6
		ANGULAR ±1/2°		MATERIAL NO.			
		DRAFT WHERE APPLICABLE MUST REMAIN WITHIN DIMENSIONS		SEE CHART			
				SIZE C		THIS DRAWING CONTAINS INFORMATION THAT IS PROPRIETARY TO MOLEX INCORPORATED AND SHOULD NOT BE USED WITHOUT WRITTEN PERMISSION	



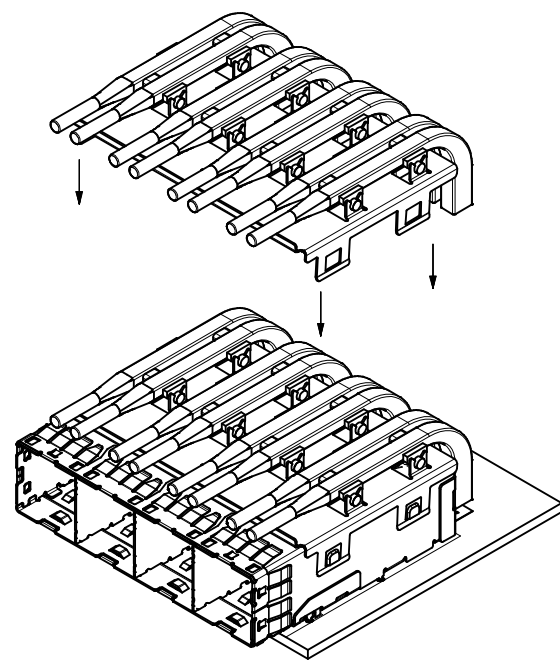
NOTES:

- MATERIALS:  
LIGHT PIPE: HALOGEN FREE, CLEAR POLYCARBONATE  
COVER: STAINLESS STEEL ALLOY
- PACKAGING SPECIFICATION: PK-76994-001
- MATES WITH: 76866-00\*3

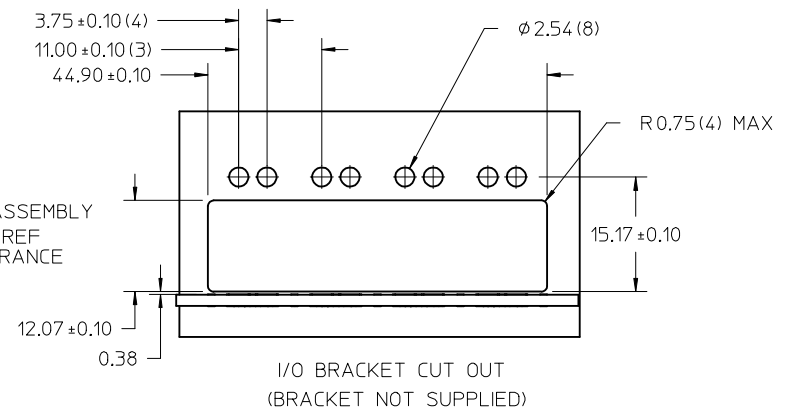
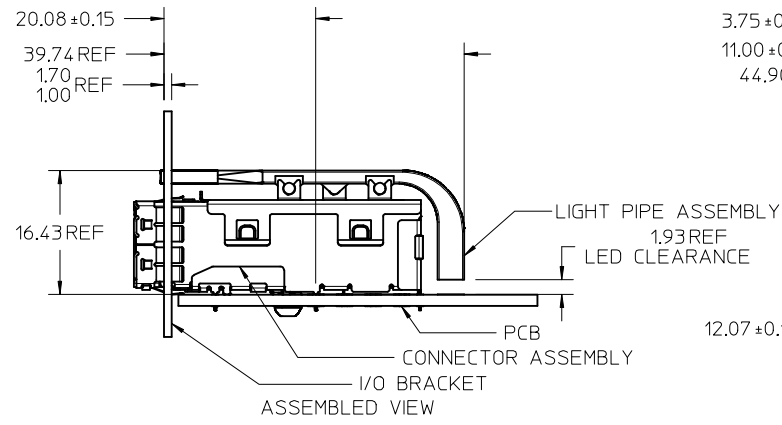
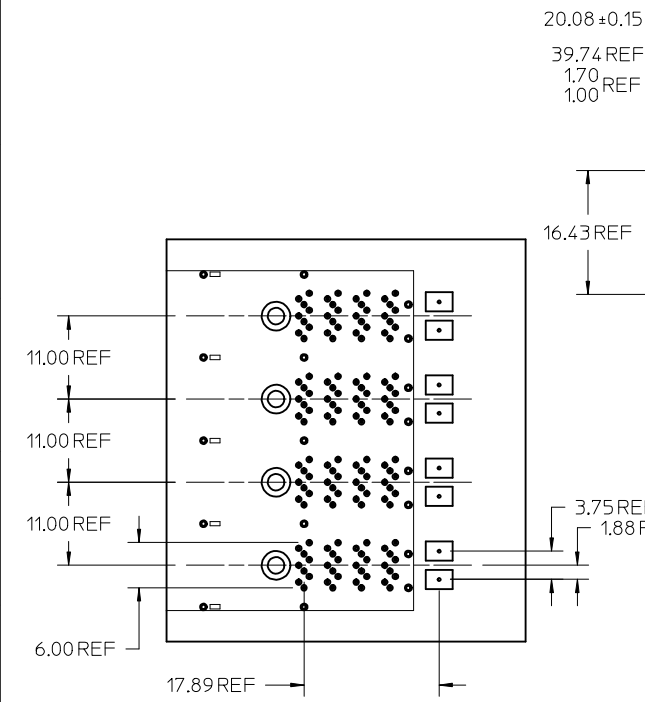
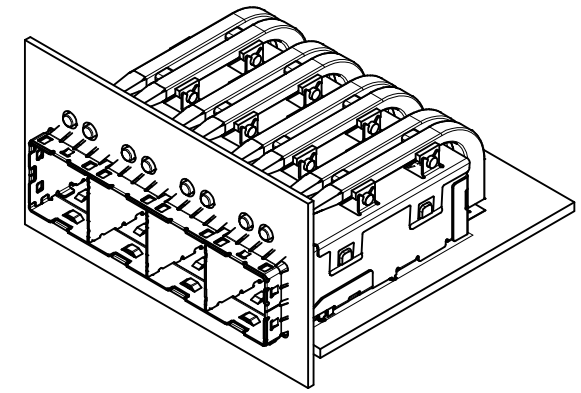
<b>UPDATED MATL SPEC</b> EC NO: UCP2014-1665 IDRW:TMCCLELL 2013/10/15 CHKD:TMCCLELLAND 2013/10/16 APPR:MBANAKIS 2013/10/17	QUALITY SYMBOLS 	GENERAL TOLERANCES (UNLESS SPECIFIED)		DIMENSION STYLE <b>MM ONLY</b>	SCALE <b>4:1</b>	DESIGN UNITS <b>METRIC</b>	THIRD ANGLE PROJECTION																		
		<table border="1"> <thead> <tr> <th></th> <th>mm</th> <th>INCH</th> </tr> </thead> <tbody> <tr> <td>4 PLACES</td> <td>± .13</td> <td>± .005</td> </tr> <tr> <td>3 PLACES</td> <td>± .15</td> <td>± .006</td> </tr> <tr> <td>2 PLACES</td> <td>± 0.13</td> <td>± .005</td> </tr> <tr> <td>1 PLACE</td> <td>± 0.25</td> <td>± .010</td> </tr> <tr> <td>0 PLACE</td> <td>±</td> <td>±</td> </tr> </tbody> </table>		mm	INCH	4 PLACES	± .13	± .005	3 PLACES	± .15	± .006	2 PLACES	± 0.13	± .005	1 PLACE	± 0.25	± .010	0 PLACE	±	±	DRAWN BY KLANG	DATE 2009/05/04	TITLE <b>IPASS PLUS HD 1X4 PIGHT PIPE &amp; CLIP ASSEMBLY</b>		
		mm	INCH																						
	4 PLACES	± .13	± .005																						
3 PLACES	± .15	± .006																							
2 PLACES	± 0.13	± .005																							
1 PLACE	± 0.25	± .010																							
0 PLACE	±	±																							
		CHECKED BY TMCCLELLAND	DATE 2013/10/16	APPROVED BY MBANAKIS			DATE 2010/01/14																		
REV <b>B3</b>	DESCRIPTION DRAFT WHERE APPLICABLE MUST REMAIN WITHIN DIMENSIONS	MATERIAL NO. <b>76994-0004</b>	DOCUMENT NO. <b>SD-76994-004</b>	SHEET NO. <b>1 OF 2</b>	THIS DRAWING CONTAINS INFORMATION THAT IS PROPRIETARY TO MOLEX. INCORPORATED AND SHOULD NOT BE USED WITHOUT WRITTEN PERMISSION																				



CONNECTOR AS APPLIED TO PCB



LIGHT PIPES AS APPLIED TO CONNECTOR



SEE SHEET 1	QUALITY SYMBOLS
EC NO: UCP2014-1665	▽=0
DRWN:TMCCLELL 2013/10/15	▽=0
CHKD:TMCCLELLAND 2013/10/16	▽=0
APPR:MBANAKIS 2013/10/17	
REV	DESCRIPTION
B3	

GENERAL TOLERANCES (UNLESS SPECIFIED)	
	mm
4 PLACES	± 0.13
3 PLACES	± 0.25
2 PLACES	± 0.38
1 PLACE	± 0.51
ANGULAR ± 1/2°	
DRAFT WHERE APPLICABLE MUST REMAIN WITHIN DIMENSIONS	

DIMENSION STYLE	
MM ONLY	
DRAWN BY	DATE
KLANG	2009/05/04
CHECKED BY	DATE
TMCCLELLAND	2013/10/16
APPROVED BY	DATE
MBANAKIS	2010/01/14
MATERIAL NO.	
SEE SHEET 1	

SCALE	DESIGN UNITS	THIRD ANGLE PROJECTION
2:1	METRIC	
TITLE		
IPASS PLUS HD 1X4 PIGHT PIPE & CLIP ASSEMBLY		
MOLEX INCORPORATED		
DOCUMENT NO.	SHEET NO.	
SD-76994-004	2 OF 2	
THIS DRAWING CONTAINS INFORMATION THAT IS PROPRIETARY TO MOLEX INCORPORATED AND SHOULD NOT BE USED WITHOUT WRITTEN PERMISSION		