

## NOTES:

## 1. MATERIAL:

CAGE: NICKEL SILVER, 0.25mm THICK

EMI STRAPS: PHOS-BRONZE

AIR-VENT/LIGHT PIPE HOUSINGS: DIECAST ALLOY

LIGHT PIPES: POLYCARBONATE (OPTIONAL)

CONNECTOR HOUSING: HIGH TEMPERATURE THERMOPLASTIC

TERMINALS: COPPER ALLOY

## 2. FINISH:

CAGE: UNPLATED

EMI STRAPS: 100 MICROINCHES NICKEL OVERALL

AIR-VENT/LIGHT PIPE HOUSINGS: NICKEL OVER COPPER

TERMINALS: CONTACT AREA: 0.76  $\mu$ m MIN. GOLD OVER2.54  $\mu$ m MIN. NICKEL.

COMPLIANT TAIL:

TIN: 0.76-1.52  $\mu$ m MATTE TIN OVER 1.27  $\mu$ m MIN NICKEL.TIN/LEAD: 0.76-1.52  $\mu$ m TIN/LEAD (90/10) OVER 1.27  $\mu$ m NICKEL.

## 3. PACKAGING: PRODUCT PACKAGED IN TRAYS AND CARTONS

## 4. ALL VISIBLE EXTERIOR SURFACES TO BE CLASS "B" OR BETTER, EXCEPT FOR THE UNDERSIDE OF THE CAGE AND SHOULD CONFORM TO THE MOLEX COSMETIC STANDARD PS-45499-002

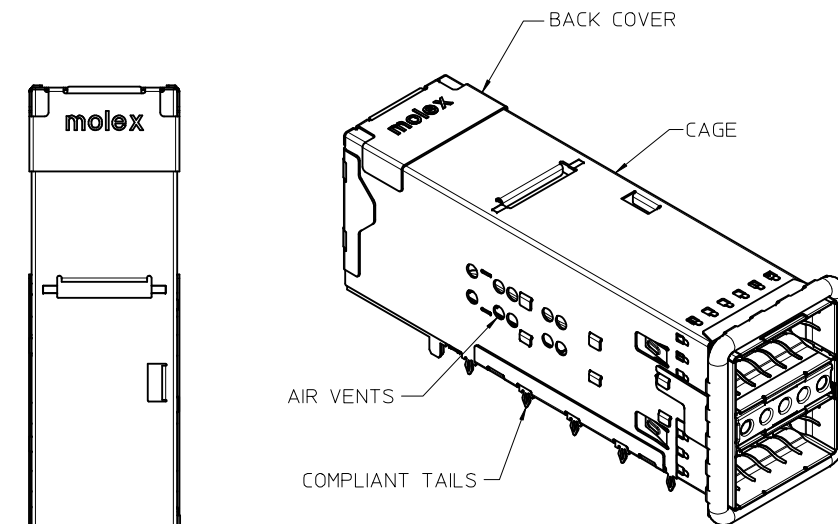
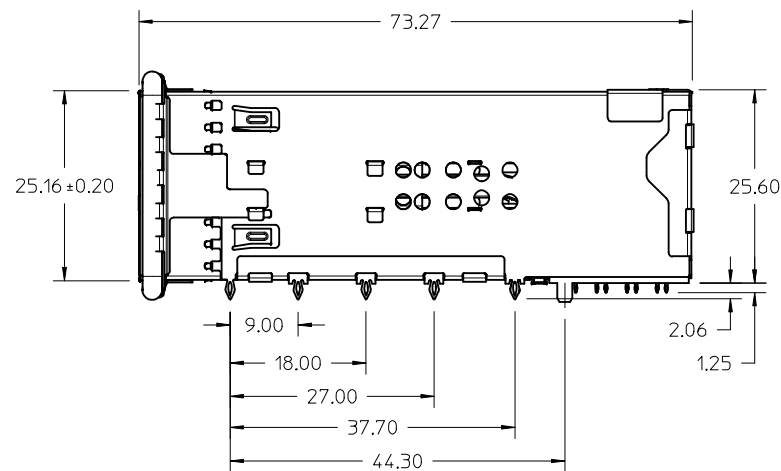
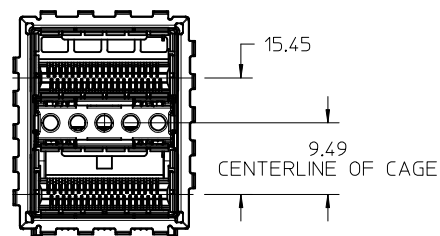
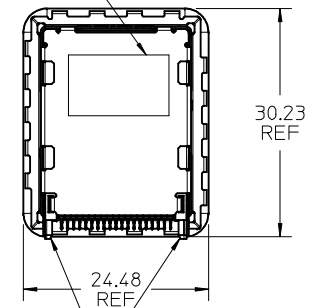
## 5. CONNECTOR MATES WITH PLUG CABLE SERIES 74757 AND 74758

## 6. DATE CODE LOCATION SHOWN

DATE CODE FORMAT:DDD

DDD= DAY OF THE YEAR

Y= YEAR

19.50  
24.04 ±0.25DATE CODE  
LOCATION  
SEE NOTE 6

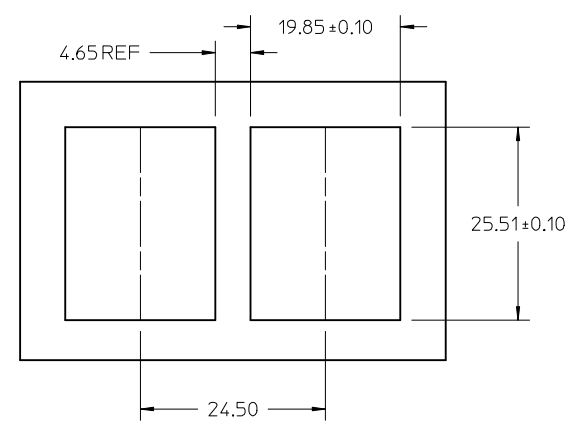
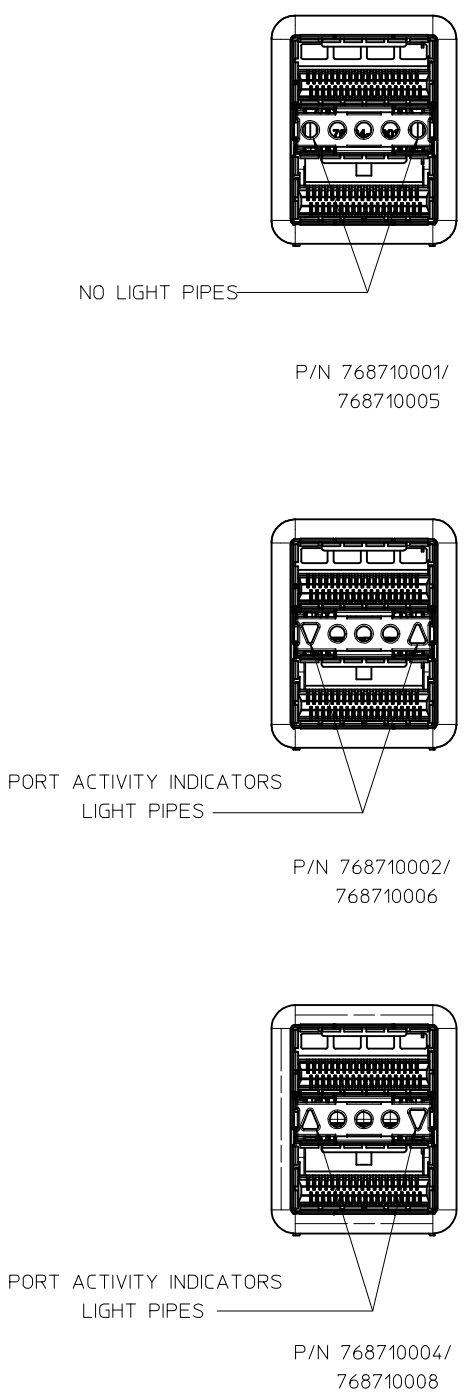
PART NUMBER	DESCRIPTION	SHOWN ON SHEET	PLATING
76871-0005	NO LIGHT PIPES	2	TIN
76871-0006	OUTER LIGHT PIPES	2	TIN
76871-0008	OUTER LIGHT PIPES	2	TIN

REMOVED TIN/LEAD PART NUMBERS EC NO: UCP2013-2368 DRWN:HAVERY 2012/12/13 CHKD: APPR:MBANAKIS 2013/08/16	QUALITY SYMBOLS ▽=0 ▽=0 ▽=0
---------------------------------------------------------------------------------------------------------------------	--------------------------------------

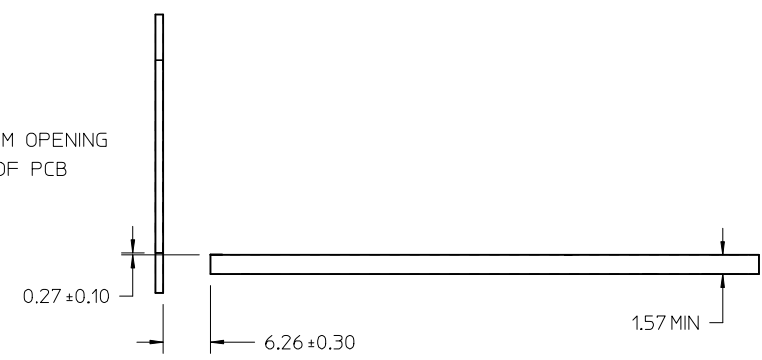
GENERAL TOLERANCES (UNLESS SPECIFIED)	
mm	INCH
4 PLACES ±---	±---
3 PLACES ±---	±---
2 PLACES ±0.13	±---
1 PLACE ±0.25	±---
ANGULAR ±1/2°	
DRAFT WHERE APPLICABLE MUST REMAIN WITHIN DIMENSIONS	

DIMENSION STYLE MM ONLY	
DRAWN BY	DATE
JJANTELEZ10	2010/04/30
CHECKED BY	DATE
JJANTELEZ10	2010/04/30
APPROVED BY	DATE
MBANAKIS	2010/10/22
MATERIAL NO.	
SEE CHART	
SIZE	C

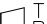

SCALE 2:1	DESIGN UNITS METRIC	THIRD ANGLE PROJECTION
TITLE QSFP PLUS ASSEMBLY STACKED 2X1		
MOLEX INCORPORATED		
DOCUMENT NO. SD-76871-001		SHEET NO. 1 OF 3
THIS DRAWING CONTAINS INFORMATION THAT IS PROPRIETARY TO MOLEX INCORPORATED AND SHOULD NOT BE USED WITHOUT WRITTEN PERMISSION		

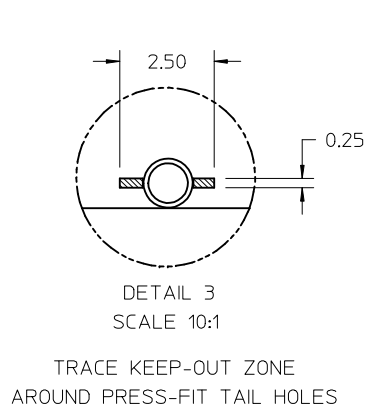


PANEL FROM OPENING TO TOP OF PCB



RECOMMENDED PANEL CUT-OUT

SEE SHEET 1 EC NO: UCP2013-2368 2012/12/13 DRWN:HAVERY CHKD: APPR:MBANAKIS 2013/08/16	REV	DESCRIPTION	QUALITY SYMBOLS	GENERAL TOLERANCES (UNLESS SPECIFIED)		DIMENSION STYLE MM ONLY		SCALE 2:1	DESIGN UNITS METRIC	 THIRD ANGLE PROJECTION	TITLE QSPF PLUS ASSEMBLY STACKED 2X1	
					mm	INCH	DRAWN BY JJANTELEZIO	DATE 2010/04/30				
				4 PLACES	± ---	± ---	CHECKED BY	DATE				
				3 PLACES	± ---	± ---	JJANTELEZIO	2010/04/30				
				2 PLACES	± 0.13	± ---	APPROVED BY MBANAKIS		DATE 2010/10/22			 MOLEX INCORPORATED
				1 PLACE	± 0.25	± ---	MATERIAL NO.		DOCUMENT NO.			
				ANGULAR		± 1/2°	SEE SHEET 1		SD-76871-001			2 OF 3
DRAFT WHERE APPLICABLE MUST REMAIN WITHIN DIMENSIONS		SIZE C		THIS DRAWING CONTAINS INFORMATION THAT IS PROPRIETARY TO MOLEX INCORPORATED AND SHOULD NOT BE USED WITHOUT WRITTEN PERMISSION								

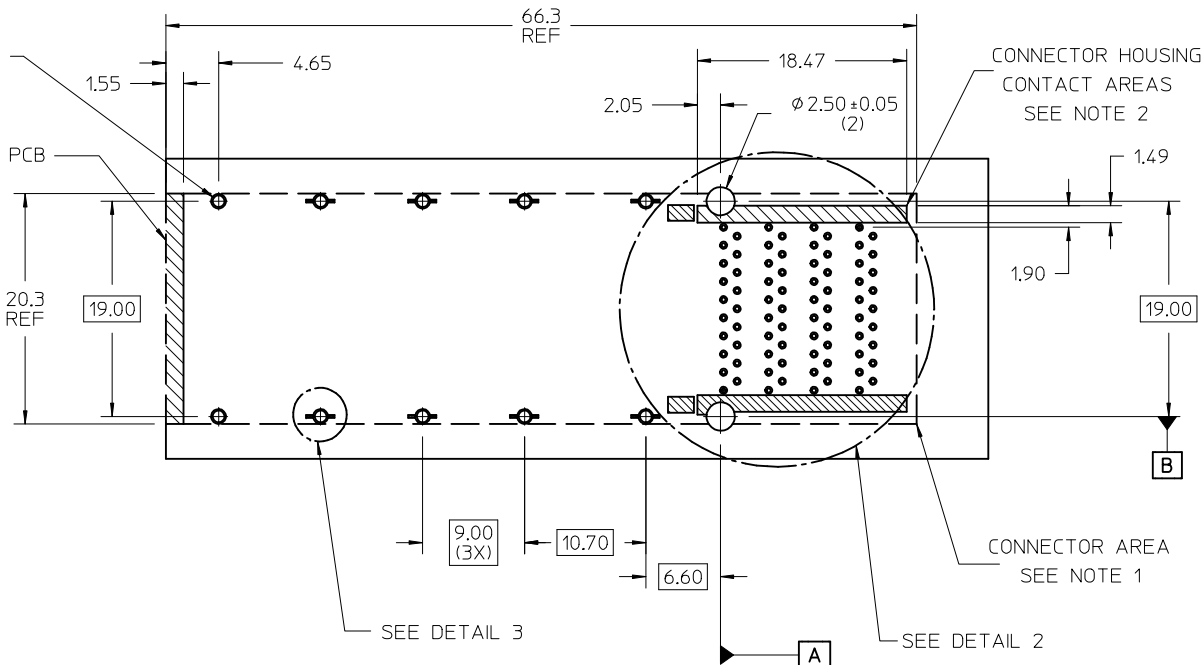


$\phi 1.05 \pm 0.05$  (10X)  
PTH  
 $\phi 0.10$  (M) A B

FRONT OF PCB

20.3  
REF

19.00



# NOTES:

1. THE ENTIRE AREA UNDER THE CONNECTOR (DASHED LINES) IS TO BE CONSIDERED A KEEP-OUT AREA FOR COMPONENTS.
2. HATCHED AREAS REPRESENT ZONES ON THE PCB THAT COME IN CONTACT WITH OR BE IN CLOSE PROXIMITY TO THE PLASTIC HOUSING OR THE CONNECTOR CAGE. INDICATED AREAS TO BE CONSIDERED TRACE FREE.
3. PIN NUMBERS ARE PER THE STANDARD. BOTH PORTS ARE IN THE SAME (UP-UP) MODULE ORIENTATION.
4. LED KEEP-IN ZONE DEFINES THE PHYSICAL SPACE ALLOWED FOR PLACEMENT OF SMD CHIP STYLE LED PACKAGES. KEEP-IN ZONE EXTENDS VERTICALLY TO 0.8mm ABOVE THE TOP SIDE OF BOARD.
5. SEE APPLICATION SPEC AS-76870-001 FOR RECOMMENDED DRILL HOLE SIZE.

DETAIL 2  
SCALE 5:1  
PCB PORT LAYOUT  
(COMPONENT SIDE)

SEE SHEET 1  
EC NO: UCP2013-2368  
DRAWN BY: 2012/12/13  
CHKD: MBANAKIS  
APPR: MBANAKIS  
2013/08/16

QUALITY  
SYMBOLS  
 $\nabla = 0$   
 $\nabla = 0$   
 $\nabla = 0$

GENERAL TOLERANCES  
(UNLESS SPECIFIED)

	mm	INCH
4 PLACES	$\pm 0.13$	$\pm 0.005$
3 PLACES	$\pm 0.25$	$\pm 0.010$
2 PLACES	$\pm 0.51$	$\pm 0.020$
1 PLACE	$\pm 1.27$	$\pm 0.050$

ANGULAR  $\pm 1/2^\circ$

DRAFT WHERE APPLICABLE  
MUST REMAIN  
WITHIN DIMENSIONS

DIMENSION STYLE  
MM ONLY

DRAWN BY	DATE
JJANTELEZIO	2010/04/30

CHECKED BY	DATE
JJANTELEZIO	2010/04/30

APPROVED BY	DATE
MBANAKIS	2010/10/22

MATERIAL NO.

SEE SHEET 1

SCALE	DESIGN UNITS	THIRD ANGLE PROJECTION
3:1	METRIC	

TITLE

QSFP PLUS ASSEMBLY  
STACKED 2X1

MOLEX INCORPORATED

DOCUMENT NO.

SD-76871-001

SHEET NO.

3 OF 3

THIS DRAWING CONTAINS INFORMATION THAT IS PROPRIETARY TO MOLEX INCORPORATED AND SHOULD NOT BE USED WITHOUT WRITTEN PERMISSION