

10 9 8 7 6 5 4 3 2 1

F

E

D

C

B

A

F

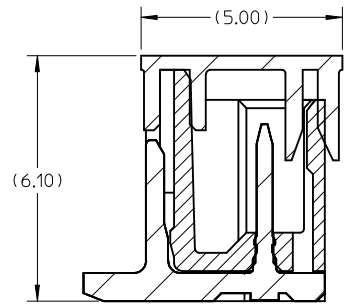
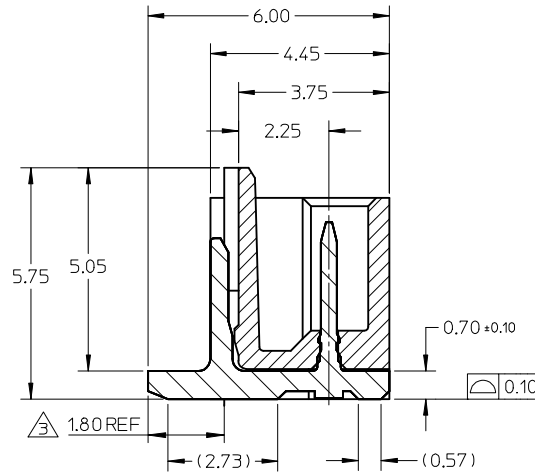
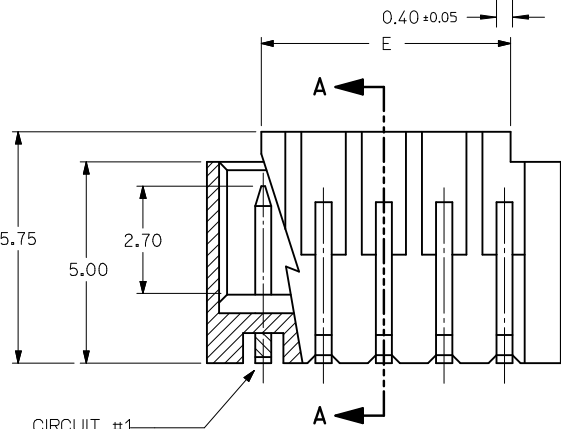
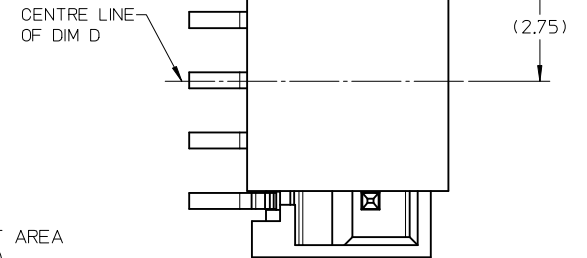
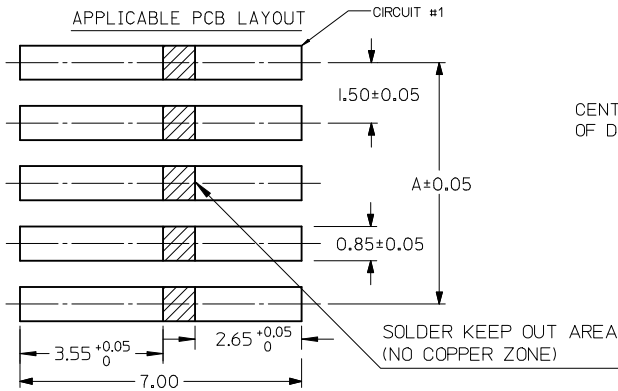
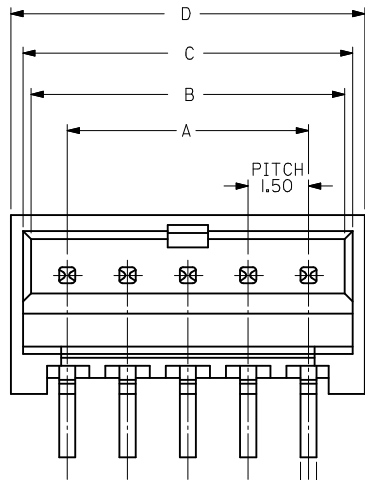
E

D

C

B

A



SECTION A-A (WITH CAP)

SECTION A-A (WITHOUT CAP)

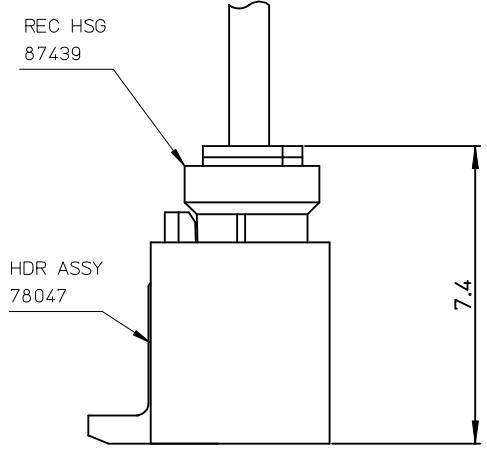
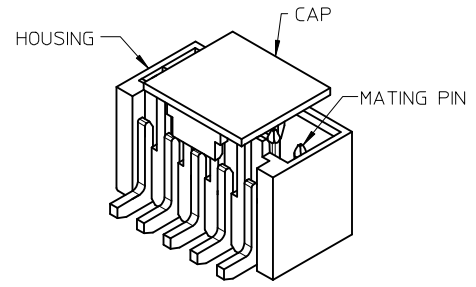
- NOTES:
- MATERIAL:  
HOUSING: GLASS FILLED LIQUID CRYSTAL POLYMER, UL94 V-0, COLOR - SEE TABLE.  
CAP: NYLON, GLASS FILLED, UL94V-0 COLOR: BEIGE.  
PINS: BRASS ALLOY, C26000.
  - PLATING: 2.54µM, MIN. MATTE TIN OVER 1.27µM MIN. NICKEL, EXCEPT AT CUT-EDGE WHERE THICKNESS CAN BE 1.90µM MIN.
  - CUT EDGE TIN MEASUREMENT POINTS.
  - DRAWING SHOWS PLUG WITH 5 CIRCUITS.
  - HEADER TO BE USED WITH CRIMP HOUSING, P/N 87439 AND CRIMP TERMINAL, P/N 87421.

REVISED	EC NO: J2014-0799	2013/11/06	GENERAL TOLERANCES (UNLESS SPECIFIED)		DIMENSION STYLE MM ONLY		SCALE 1:1	DESIGN UNITS METRIC	THIRD ANGLE PROJECTION		
	DRW: NHORI	2013/11/07	10 UNDER	±0.20	DRAWN BY	DATE	TITLE				
	CHKD: KASAKAWA	2013/11/07	10 OVER 30 UNDER	±0.20	CHECKED BY	DATE	150MM PITCH, W-T-B HEADER, VERTICAL, SMT				
	APPR: NUKITA	2013/11/08	30 OVER	±0.20	ATSEE	2007/07/25					
DESCRIPTION	ANGULAR ±3 °		DRAFT WHERE APPLICABLE MUST REMAIN WITHIN DIMENSIONS		APPROVED BY	DATE	DOCUMENT NO.		SHEET NO.		
REV	SEE TABLE				NUKITA	2010/10/14	SD-78047-001		1 OF 4		
					SIZE	THIS DRAWING CONTAINS INFORMATION THAT IS PROPRIETARY TO MOLEX INCORPORATED AND SHOULD NOT BE USED WITHOUT WRITTEN PERMISSION					
					A3						

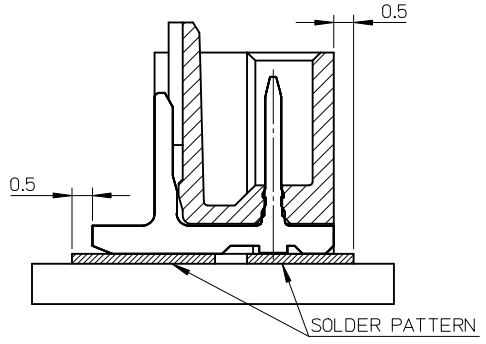
9 8 7 6 5 4 3 2

10 9 8 7 6 5 4 3 2 1

HOUSING COLOR	LEAD FREE TERMINAL P/N	CAP	HEADER IN TUBE PACKING	HEADER IN TAPE & REEL	HEADER IN TAPE & REEL (WITH HOLE)	CIRCUIT SIZE	A	B	C	D	E
BIEGE	TIN PLATING	N/A	78047-0242	78047-0243	---	2	1.50	3.30	3.70	4.30	1.70
			78047-0342	78047-0343	---	3	3.00	4.80	5.20	5.80	3.20
			78047-0442	78047-0443	---	4	4.50	6.30	6.70	7.30	4.70
			78047-0542	78047-0543	---	5	6.00	7.80	8.20	8.80	6.20
			78047-0642	78047-0643	---	6	7.50	9.30	9.70	10.30	7.70
			78047-0742	78047-0743	---	7	9.00	10.80	11.20	11.80	9.20
			78047-0842	78047-0843	---	8	10.50	12.30	12.70	13.30	10.70
			78047-0942	78047-0943	---	9	12.00	13.80	14.20	14.80	12.20
			78047-1042	78047-1043	---	10	13.50	15.30	15.70	16.30	13.70
			78047-1142	78047-1143	---	11	15.00	16.80	17.20	17.80	15.20
			78047-1242	78047-1243	---	12	16.50	18.30	18.70	19.30	16.70
			78047-1342	78047-1343	---	13	18.00	19.80	20.20	20.80	18.20
			78047-1442	78047-1443	---	14	19.50	21.30	21.70	22.30	19.70
			78047-1542	78047-1543	---	15	21.00	22.80	23.20	23.80	21.20
					YES	---	---	78047-0574	5	6.00	7.80
		YES	---	---	78047-0774	7	9.00	10.80	11.20	11.80	9.20



**嵌合状態図**  
**MATED CONNECTORS**



**MOUNTING POSITION OF THE CONNECTOR**

**PART NUMBER ASSIGNMENT**

- 78047-XXXX
- 2- TUBE PACKAGING
  - 3- TAPE AND REEL PACKAGING
  - 4- TAPE AND REEL PACKAGING WITH SPOCKET HOLE
  - 4- BEIGE COLOR HSG } WITHOUT CAP
  - 5- BLACK COLOR HSG }
  - 6- BLACK COLOR HSG } WITH CAP
  - 7- BEIGE COLOR HSG }
- 02 TO 15 CIRCUIT SIZE

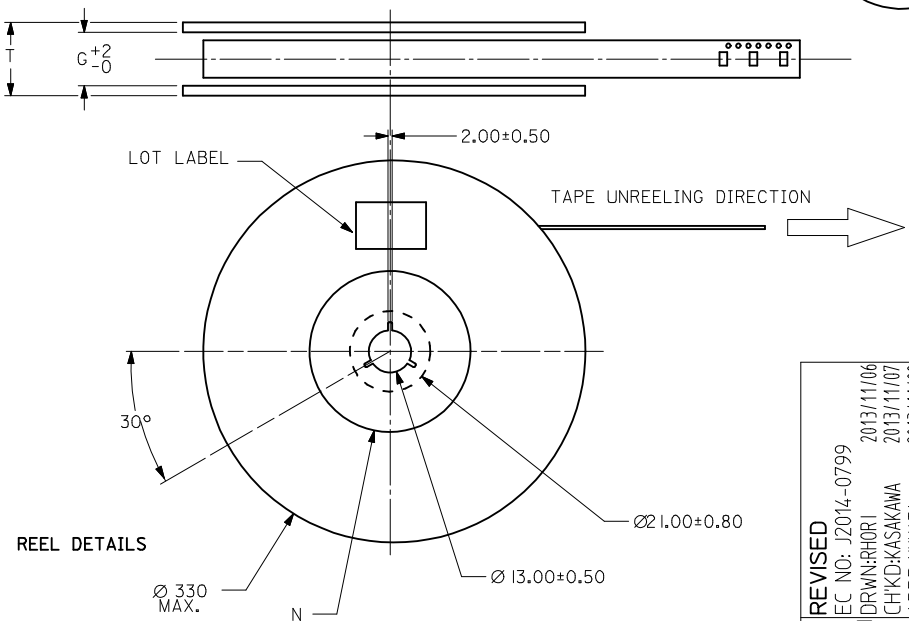
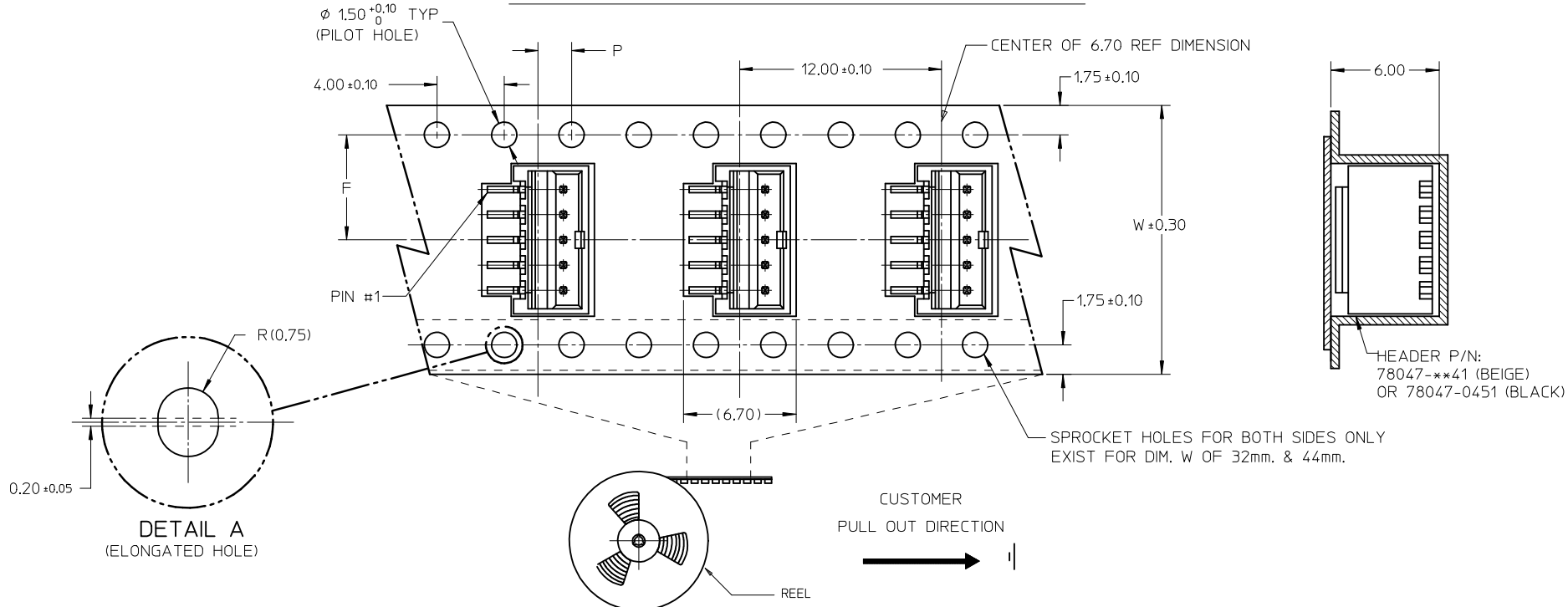
(PLEASE CONTACT MOLEX FOR OTHER PART NUMBER REQUEST)

REVISED EC NO: J2014-0799 DRW: NPHORI CHK: KASAKAWA APPR: NUKITA	2013/11/06 2013/11/07 2013/11/08	GENERAL TOLERANCES (UNLESS SPECIFIED)		DIMENSION STYLE	SCALE	DESIGN UNITS	THIRD ANGLE PROJECTION	
				MM ONLY	1:1	METRIC		
		10 UNDER	±0.20	DRAWN BY	DATE	TITLE		
		10 OVER 30 UNDER	±0.20	SKANG	2007/07/18	150MM PITCH, W-T-B HEADER, VERTICAL, SMT		
30 OVER	±0.20	CHECKED BY	DATE	<b>molex</b>			SHEET NO. 2 OF 4	
ANGULAR ±3 °		ATSEE	2007/07/25					
DRAFT WHERE APPLICABLE MUST REMAIN WITHIN DIMENSIONS		APPROVED BY	DATE	DOCUMENT NO.				
		NUKITA	2010/10/14	SD-78047-001				
		MATERIAL NO.		SEE TABLE				
		SIZE		THIS DRAWING CONTAINS INFORMATION THAT IS PROPRIETARY TO MOLEX INCORPORATED AND SHOULD NOT BE USED WITHOUT WRITTEN PERMISSION				
		A3						

9 8 7 6 5 4 3 2

10 9 8 7 6 5 4 3 2 1

EMBOSSED CARRIER TAPE PACKING DETAILS FOR PARTS WITHOUT CAP

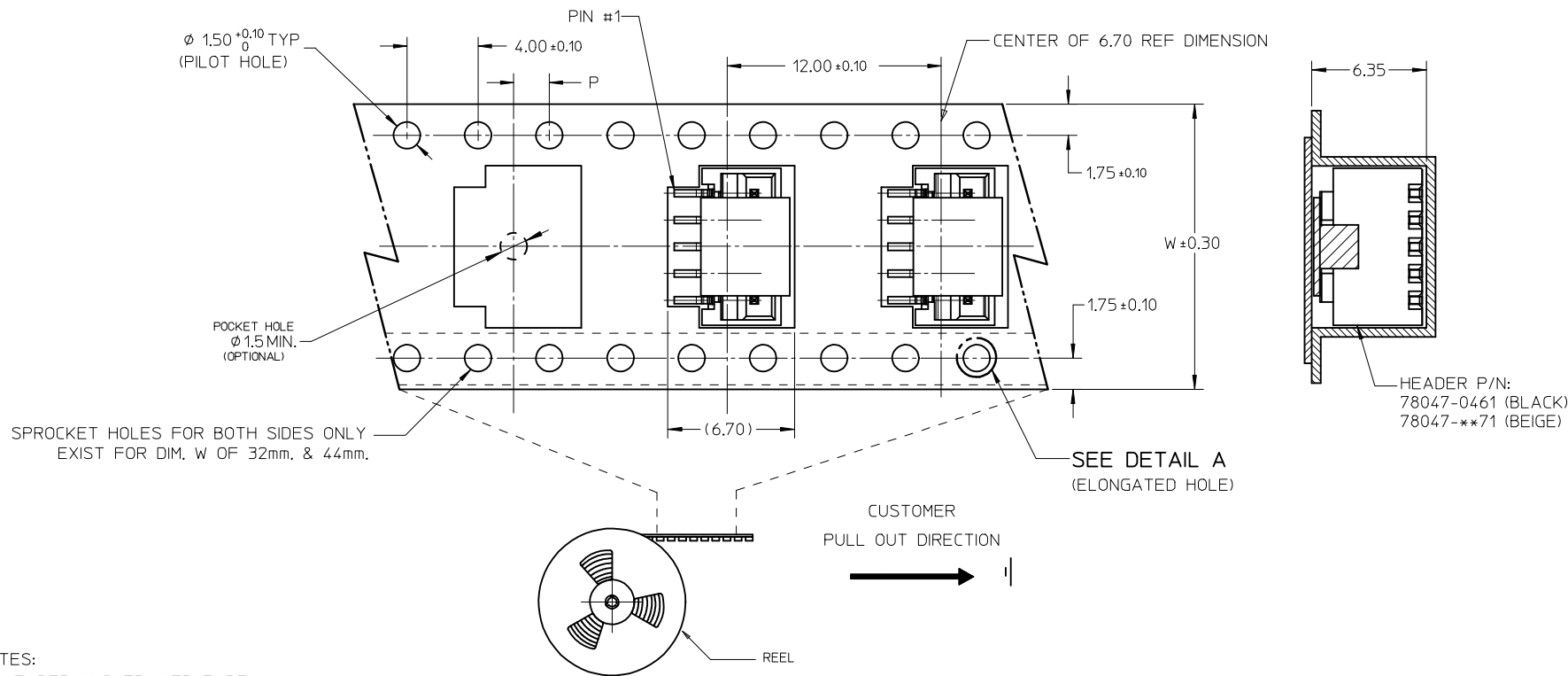


REVISED EC NO: J2014-0799 DRW:RHORI 2013/11/06 CHKD:KASAKAWA 2013/11/07 APPR:NUKITA 2013/11/08	DESCRIPTION GENERAL TOLERANCES (UNLESS SPECIFIED) 10 UNDER ± 0.20 10 OVER 30 UNDER ± 0.20 30 OVER ± 0.20 ANGULAR ± 3 ° DRAFT WHERE APPLICABLE MUST REMAIN WITHIN DIMENSIONS	DIMENSION STYLE MM ONLY	SCALE 1:1	DESIGN UNITS METRIC	THIRD ANGLE PROJECTION
		DRAWN BY SKANG	DATE 2007/07/18	TITLE 1.50MM PITCH, W-T-B HEADER, VERTICAL, SMT	
		CHECKED BY ATSEE	DATE 2007/07/25	MATERIAL NO. SEE TABLE	
		APPROVED BY NUKITA	DATE 2010/10/14	DOCUMENT NO. SD-78047-001	SHEET NO. 3 OF 4



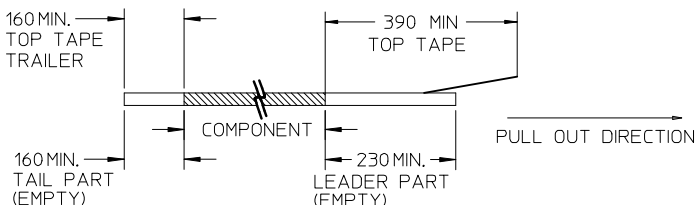
9 8 7 6 5 4 3 2 1

EMBOSSED CARRIER TAPE PACKING DETAILS FOR PARTS WITH CAP (A)

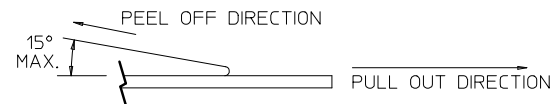


SPROCKET HOLES FOR BOTH SIDES ONLY EXIST FOR DIM. W OF 32mm, & 44mm.

NOTES:  
1. LEADER AND TRAILER TAPE



2. PEELING OFF FORCE OF THE TOP TAPE: 20-80gf.  
(PEELING DIRECTION AS SHOWN IN FOLLOWING FIGURE)



- 3. THE TAPE IS TREATED FOR ANTI-STATIC.
- 4. PACKAGING STANDARD IS AS PER EIA-481.
- 5. TAPE & REEL QUANTITY = 1000PCS/REEL (WITHOUT CAP)  
TAPE & REEL QUANTITY = 900PCS/REEL (WITH CAP)

15	44	20.20±0.15	100	44.40	50.40	2.00±0.15
11, 12, 13, 14	32	14.20±0.10	100	32.40	38.40	2.00±0.10
7, 8, 9, 10	24	11.50±0.10	100	24.40	30.40	2.00±0.10
2, 3, 4, 5, 6	16	7.50±0.10	100	16.40	22.40	2.00±0.10
CIRCUIT SIZE	W	F	N	G	T MAX	P

REVISED EC NO: J2014-0799 DRWNR:HORI 2013/11/06 CHKD:KASAKAWA 2013/11/07 APPR:NUKITA 2013/11/08	DESCRIPTION GENERAL TOLERANCES (UNLESS SPECIFIED) 10 UNDER ±0.20 10 OVER 30 UNDER ±0.20 30 OVER ±0.20 ANGULAR ±3 ° DRAFT WHERE APPLICABLE MUST REMAIN WITHIN DIMENSIONS	DIMENSION STYLE MM ONLY	SCALE 1:1	DESIGN UNITS METRIC	THIRD ANGLE PROJECTION		
		DRAWN BY SKANG	DATE 2007/07/18	TITLE 1.50MM PITCH, W-T-B HEADER, VERTICAL, SMT			
		CHECKED BY ATSEE	DATE 2007/07/25	MATERIAL NO. SEE TABLE			
		APPROVED BY NUKITA	DATE 2010/10/14	DOCUMENT NO. SD-78047-001	SHEET NO. 4 OF 4		
SIZE A3 THIS DRAWING CONTAINS INFORMATION THAT IS PROPRIETARY TO MOLEX INCORPORATED AND SHOULD NOT BE USED WITHOUT WRITTEN PERMISSION							