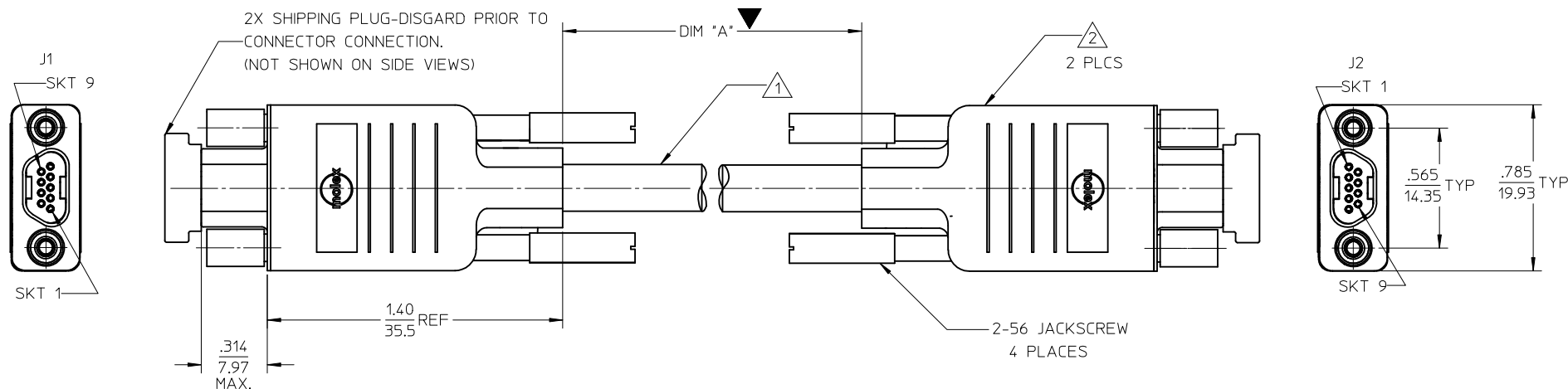


10	9	8	7	6	5	4	3	2	1
MATERIAL NO.	ENGINEERING NO.	DIM "A" INCH	DIM "A" (MM)						
834219049	83421-9049	18.00 +.39/- .39	457.0 +10.0/-10.0						



NOTES UNLESS OTHERWISE SPECIFIED

- 1 CABLE, 28 AWG, 9 CONDUCTOR
TINNED COPPER
SHIELD: AL-FOIL/MYLAR, INCLUDING DRAIN WIRE & BRAID
WIRE INSULATION: PVC
OUTER CABLE JACKET: BLACK PVC
- 2 MOLEX COMMERCIAL MICRO-D:
EXTERNAL INSULATOR: MOLDED PVC, COLOR: BLACK
INTERNAL BACK SHELL: NICKEL PLATED STEEL
CONTACTS: COPPER ALLOY, GOLD PLATED OVER NICKEL
INTERNAL INSULATOR: THERMOPLASTIC UL 94V-0
- 3 IN & OUT LABELS ARE PERMANENT
4. REFER TO PS-83421-9000 FOR PRODUCT SPEC.
5. REFER TO PK-83421-011 FOR PACKAGING SPEC.
6. ALL DIMS ARE FOR REFERENCE ONLY UNLESS NOTED OTHERWISE.
7. RoHS COMPLIANT

SALES DRAWING

J1									J2
1									1
2									2
3									3
4									4
5									5
6									6
7									7
8									8
9									9
SHELL									SHELL

UPDATE NOTES		QUALITY SYMBOLS		GENERAL TOLERANCES (UNLESS SPECIFIED)		DIMENSION STYLE		SCALE		DESIGN UNITS		THIRD ANGLE PROJECTION	
EC NO: IPG2012-0080		DRAWN: BRUPERT		mm		IN/MM		2:1		INCH			
2012/02/29		2012/05/18		4 PLACES ± --- ± ---		DRAWN BY		DATE		TITLE			
CHKD: JFURPHY		APPR: JFURPHY		3 PLACES ± --- ± ---		JAL		02/03/26		COMMERCIAL MICRO-D			
				2 PLACES ± --- ± ---		CHECKED BY		DATE		9 SOCKET CABLE ASS'Y			
				1 PLACE ± --- ± ---		HEB		02/03/27		MOLEX INCORPORATED			
				ANGULAR ± 1/2°		APPROVED BY		DATE		SD-83421-9049			
				DRAFT WHERE APPLICABLE MUST REMAIN WITHIN DIMENSIONS		RWD		02/03/28		DOCUMENT NO.		SHEET NO.	
						MATERIAL NO.		SEE CHART		SD-83421-9049		1 OF 1	
						SIZE		THIS DRAWING CONTAINS INFORMATION THAT IS PROPRIETARY TO MOLEX INCORPORATED AND SHOULD NOT BE USED WITHOUT WRITTEN PERMISSION					