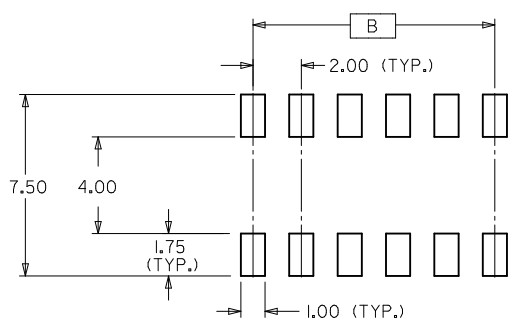
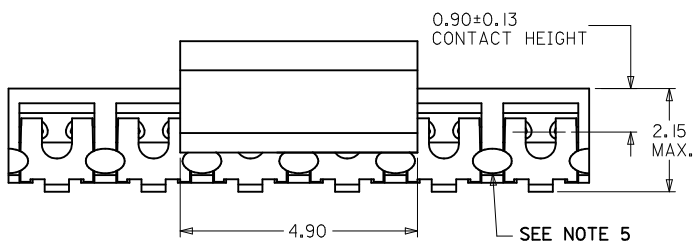
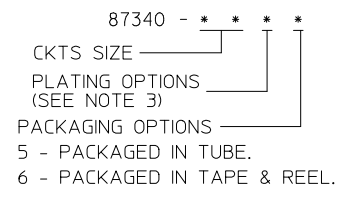


| PART NUMBER (WITH CAP IN TUBE) | PART NUMBER (WITH CAP IN TAPE & REEL) | CKT. SIZE | DIM. A | DIM. B |
|--------------------------------|---------------------------------------|-----------|--------|--------|
| 87340-04*5 | 87340-04*6 | 04 | 4.00 | 2.00 |
| 87340-06*5 | 87340-06*6 | 06 | 6.00 | 4.00 |
| 87340-08*5 | 87340-08*6 | 08 | 8.00 | 6.00 |
| 87340-10*5 | 87340-10*6 | 10 | 10.00 | 8.00 |
| 87340-12*5 | 87340-12*6 | 12 | 12.00 | 10.00 |
| 87340-16*5 | 87340-16*6 | 16 | 16.00 | 14.00 |

- NOTES :
- FOR ILLUSTRATION PURPOSES, DRAWING SHOWS PART 12 CIRCUIT SIZE.
 - MATERIAL :
HOUSING :
LCP GLASS FILLED, UL 94V-0
SUITABLE FOR SURFACE-MOUNT SOLDERING PROCESS.
COLOR : BLACK
TERMINAL :
PHOSPHOR BRONZE ALLOY
 - PLATING FINISH:
- **6*
0.05-0.25um GOLD AT TERMINAL CONTACT AREA.
1.90um MIN TIN IN SOLDER TAIL AREA BOTH OVER
1.27um MIN NICKEL OVERALL.
- **7*
0.38um MIN GOLD AT TERMINAL CONTACT AREA.
1.90um MIN TIN IN SOLDER TAIL AREA BOTH OVER
1.27um MIN NICKEL OVERALL.
- **8*
0.76um MIN GOLD AT TERMINAL CONTACT AREA.
1.90um MIN TIN IN SOLDER TAIL AREA BOTH OVER
1.27um MIN NICKEL OVERALL.
 - COPLANARITY OF P.C TAIL TO BE MEASURED BY RESTING THE PART ON A FLAT GAGE SURFACE.
 - THIS AREA OF PART TO BE HEAT-STAKED TO RETAIN CONTACTS.
 - POSITION OF CAP TO BE LOCATED AT CENTRE OF DIMENSION 'A' REGARDLESS OF CIRCUIT SIZE.
 - PRODUCT SPECIFICATION PS-87340 APPLIES.
 - PART TO BE PACKED IN TUBE OR TAPE & REEL. SEE SHEET 2 FOR PACKAGING DETAILS.
 - CONTACT FACTORY FOR PARTS AVAILABILITY.

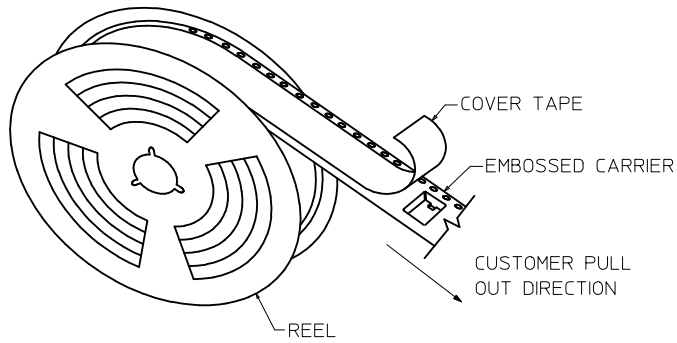
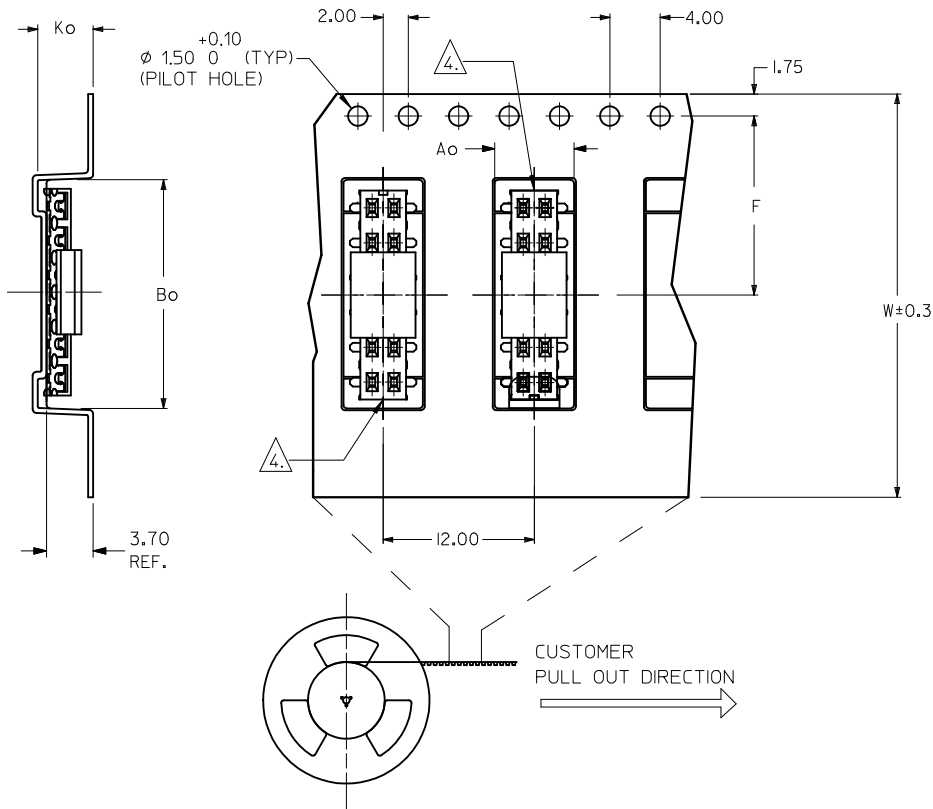
PART NO. LEGEND



RECOMMENDED SOLDER PAD DESIGN (NTS)

| | | | | | | |
|---|-----------------------------------|---|---|--------------|---|------------------------|
| ADD AU FLASH OPTION EC NO: S2011-1004 DRWN:SKANG 2011/06/03 CHKD:ATSEE 2011/06/14 APPR:MLONG 2011/06/14 | QUALITY SYMBOLS | GENERAL TOLERANCES (UNLESS SPECIFIED) | DIMENSION STYLE | SCALE | DESIGN UNITS | THIRD ANGLE PROJECTION |
| | $\nabla=0$ $\sphericalangle=0$ | mm INCH 4 PLACES ± --- ± --- 3 PLACES ± --- ± --- 2 PLACES ± 0.20 ± --- 1 PLACE ± --- ± --- ANGULAR ± 3 ° | MM ONLY | NTS | METRIC | |
| | REV | DRAFT WHERE APPLICABLE MUST REMAIN WITHIN DIMENSIONS | DRAWN BY | DATE | TITLE | |
| | D3 | | PTLIM | 1996/04/03 | MGRID, VLPR II TOP ENTRY RECEPTACLE W/O LOC PEGS, SMT | |
| | | | CHECKED BY | DATE | | |
| | | | SKTOH | 1996/04/08 | | |
| | | | APPROVED BY | DATE | | |
| | | | RWONG | 1996/04/19 | | |
| | | | MATERIAL NO. | DOCUMENT NO. | | |
| | | | SEE TABLE | | | |
| | | | SIZE | | | |
| | | | A3 | | | |
| | | | THIS DRAWING CONTAINS INFORMATION THAT IS PROPRIETARY TO MOLEX INCORPORATED AND SHOULD NOT BE USED WITHOUT WRITTEN PERMISSION | | | |

EMBOSSED CARRIER TAPE WITH DIMENSIONS
(12 CKT IS SHOWN FOR ILLUSTRATION ONLY)

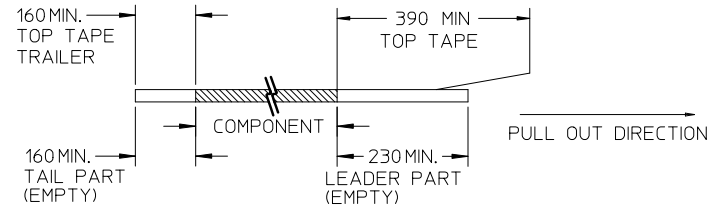


TAPE AND REEL ASSEMBLY SHOWN IS FOR ILLUSTRATION ONLY

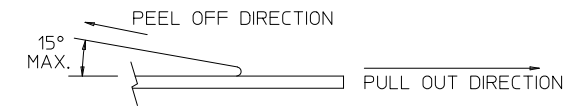
| PART NO (WITH CAP IN TAPE & REEL) | CKT SIZE | Ao | Bo | F | W | Ko |
|---|-------------|------|-------|-------|-------|------|
| 87340-0476 | 04 | 6.70 | 5.30 | 11.50 | 24.00 | 5.30 |
| 87340-0676 | 06 | 6.70 | 6.40 | 11.50 | 24.00 | 5.30 |
| 87340-0686 | 06 | 6.70 | 6.40 | 11.50 | 24.00 | 5.30 |
| 87340-0876 | 08 | 6.70 | 8.50 | 11.50 | 24.00 | 5.30 |
| 87340-1076 | 10 | 6.70 | 10.40 | 11.50 | 24.00 | 5.30 |
| 87340-1276 | 12 | 6.70 | 12.40 | 11.50 | 24.00 | 5.30 |
| 87340-1686 | 16 | 6.70 | 16.30 | 11.50 | 24.00 | 5.30 |

NOTES:

1. LEADER AND TRAILER TAPE



2. PEELING OFF FORCE OF THE TOP TAPE: 20-80gf.
(PEELING DIRECTION AS SHOWN IN FOLLOWING FIGURE)



3. PACKAGING STANDARD IS AS PER EIA-481.
4. TAPE & REEL QUANTITY = 1000 PCS/REEL

△ NO FIX ORIENTATION OF ASSEMBLY PART IN T&R.

| REV | DESCRIPTION | QUALITY SYMBOLS | | GENERAL TOLERANCES (UNLESS SPECIFIED) | | DIMENSION STYLE | | SCALE | DESIGN UNITS | THIRD ANGLE PROJECTION | |
|-----|---|-----------------|------|---------------------------------------|---------------|---|--------------|--------|---|------------------------|--|
| | | mm | INCH | mm | INCH | MM ONLY | NTS | METRIC | | | |
| D3 | ADD AU FLASH OPTION EC NO: S2011-1004 DRWN:SKANG 2011/06/03 CHKD:ATSEE 2011/06/14 APPR:MLONG 2011/06/14 | ▽=0 | ▽=0 | 4 PLACES | ± --- ± --- | DRAWN BY | DATE | TITLE | MGRID, VLPR II TOP ENTRY RECEPTACLE W/O LOC PEGS, SMT MOLEX INCORPORATED | | |
| | | | | 3 PLACES | ± --- ± --- | PTLIM | 1996/04/03 | | | | |
| | | | | 2 PLACES | ± 0.20 ± --- | CHECKED BY | DATE | | | | |
| | | | | 1 PLACE | ± --- ± --- | SKTOH | 1996/04/08 | | | | |
| | | | | | ANGULAR ± 3 ° | APPROVED BY | DATE | | | | |
| | | | | | | RWONG | 1996/04/19 | | | | |
| | | | | | | MATERIAL NO. | DOCUMENT NO. | | | | |
| | | | | | | SEE TABLE | | | | | |
| | | | | | | SIZE | | | | | |
| | | | | | | A3 | | | | | |
| | | | | | | THIS DRAWING CONTAINS INFORMATION THAT IS PROPRIETARY TO MOLEX INCORPORATED AND SHOULD NOT BE USED WITHOUT WRITTEN PERMISSION | | | | | |