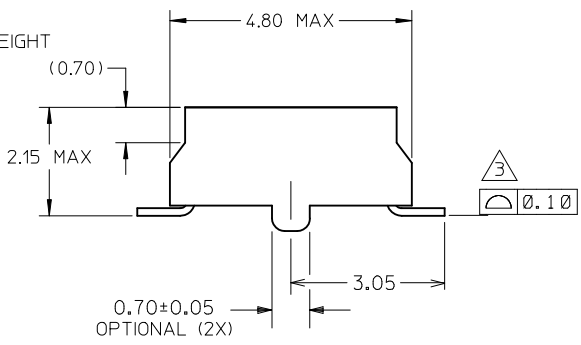
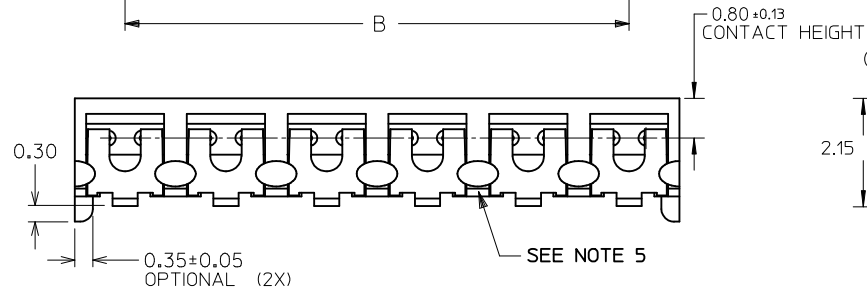
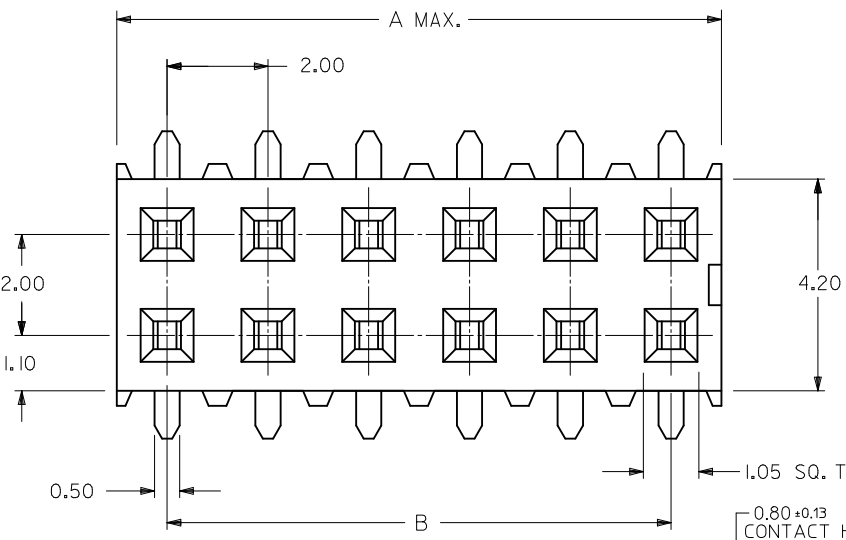


10 9 8 7 6 5 4 3 2 1

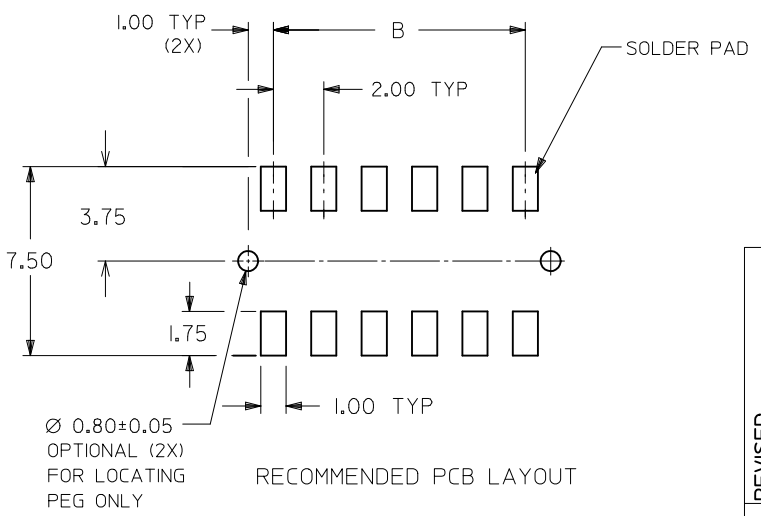
PART NO. IN TUBE	CKT. SIZE	DIM. B	DIM. A
87340-04**	4	2.00	4.00
87340-06**	6	4.00	6.00
87340-08**	8	6.00	8.00
87340-10**	10	8.00	10.00
87340-12**	12	10.00	12.00
87340-14**	14	12.00	14.00
87340-16**	16	14.00	16.00
87340-18**	18	16.00	18.00
87340-20**	20	18.00	20.00

- NOTES:
- 12 CIRCUIT SIZE SHOWN FOR ILLUSTRATION ONLY. SEE CHART FOR AVAILABLE PART SIZES.
 - PLATING FINISH:
 - 5 & 7 - 0.05um-0.25um GOLD IN CONTACT AREA 1.90um/75uin MIN. TIN IN SOLDER TAIL AREA BOTH OVER 1.30um/50uin MIN. NICKEL OVERALL
 - 3 & 8 - 0.76um/30uin MIN. GOLD IN CONTACT AREA 1.90um/75uin MIN. TIN IN SOLDER TAIL AREA BOTH OVER 1.30um/50uin MIN. NICKEL OVERALL
 - 4 & 9 - 0.38um/15uin MIN. GOLD IN CONTACT AREA 1.90um/75uin MIN. TIN IN SOLDER TAIL AREA BOTH OVER 1.30um/50uin MIN. NICKEL OVERALL
 - COPLANARITY OF SOLDER TAIL IS TO BE MEASURED BY RESTING THE PART ON A FLAT GAUGE SURFACE.
 - PRODUCT SPECIFICATION PS-87340 APPLIES.
 - THIS AREA OF PART TO BE HEAT STAKED TO RETAIN CONTACTS.
 - PART IS MATEABLE TO ALL MILLI-GRID HEADERS WITH MINIMUM PIN LENGTHS OF 1.90mm FOR TOP ENTRY.



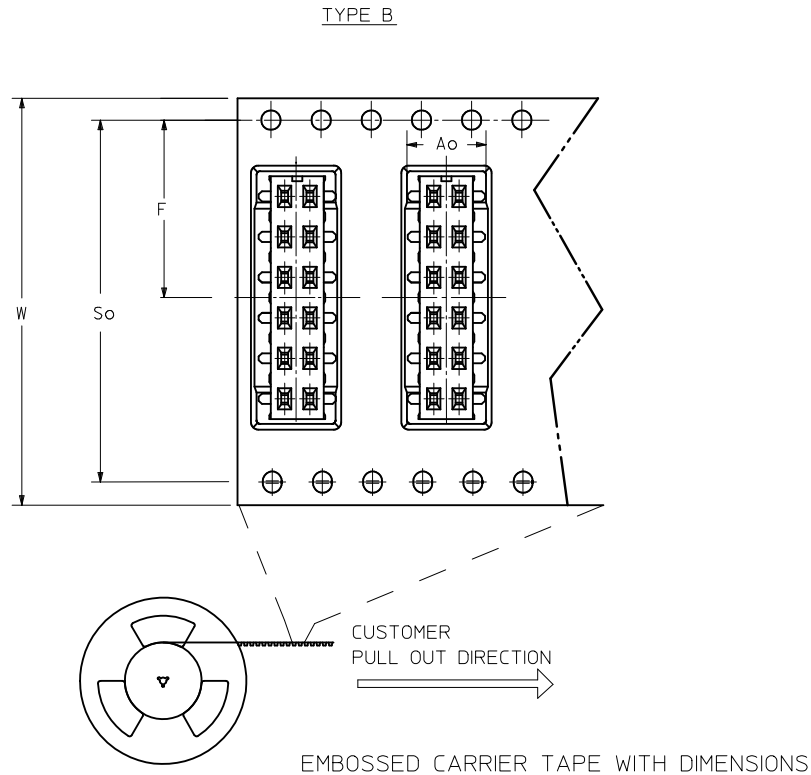
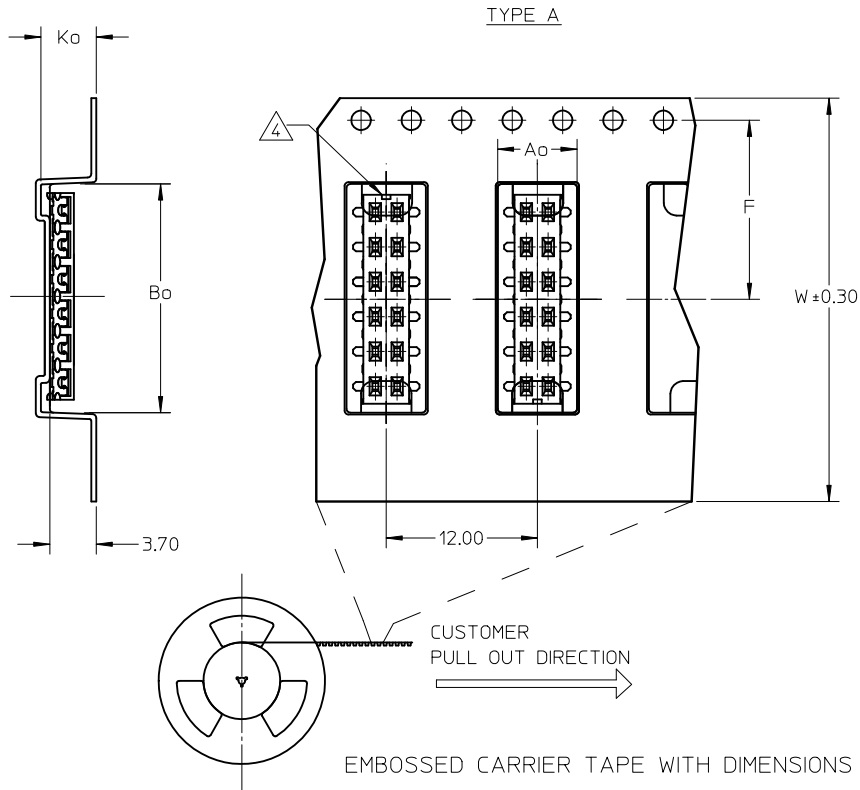
PART NO. LEGEND

- 87340 - * * * * *
- CIRCUIT SIZE
- PACKAGING & PLATING
- 3 - (TUBE WITH 0.76um MIN GOLD)
 - 4 - (TUBE WITH 0.38um MIN GOLD)
 - 5 - (TUBE WITH 0.05-0.25um GOLD)
 - 7 - (T&R WITH 0.05-0.25um GOLD)
 - 8 - (T&R WITH 0.76um MIN GOLD)
 - 9 - (T&R WITH 0.38um MIN GOLD)
- 1 - WITHOUT LOCATING PEGS (HOUSING - BLACK)
 - 2 - WITH LOCATING PEGS (HOUSING - BLACK)
 - 5 - WITHOUT LOCATING PEGS (HOUSING - NATURAL)
 - 6 - WITH LOCATING PEGS (HOUSING - NATURAL)



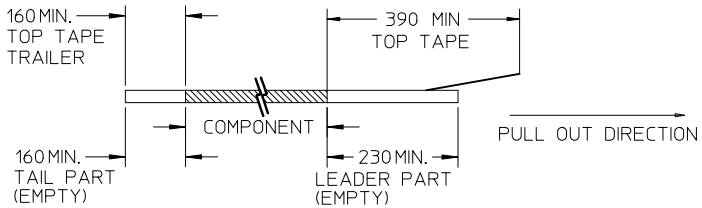
REVISED EC NO: S2012-0405 DRWN:SKANG CHKD:ATSEE APPR:MLONG	DESCRIPTION 2011/11/16 2011/12/19 2011/12/19	QUALITY SYMBOLS	GENERAL TOLERANCES (UNLESS SPECIFIED)	DIMENSION STYLE	SCALE	DESIGN UNITS	THIRD ANGLE PROJECTION	
		$F_A=0$	mm INCH	MM ONLY	NTS	METRIC		
		$F_G=0$	4 PLACES ± --- ± ---	DRAWN BY	DATE	TITLE	MGRID	
		$F_P=0$	3 PLACES ± --- ± ---	JKACHL I	1991/07/02	VLPR II, 2MM DUAL ROW TOP ENTRY RECEPT., SMT		
		2 PLACES ± 0.20 ± ---	CHECKED BY	DATE	MOLEX INCORPORATED			
		1 PLACE ± --- ± ---	JNG	1991/07/09	SD-87340-**-01			
		ANGULAR ± 3 °	APPROVED BY	DATE	SHEET NO.			
			MLONG	2009/11/24	1 OF 3			
			MATERIAL NO.	SEE TABLE	DOCUMENT NO.			
					THIS DRAWING CONTAINS INFORMATION THAT IS PROPRIETARY TO MOLEX INCORPORATED AND SHOULD NOT BE USED WITHOUT WRITTEN PERMISSION			

9 8 7 6 5 4 3 2 1



NOTES:

1. LEADER AND TRAILER TAPE



2. PEELING OFF FORCE OF THE TOP TAPE: 20-80gf. (PEELING DIRECTION AS SHOWN IN FOLLOWING FIGURE)



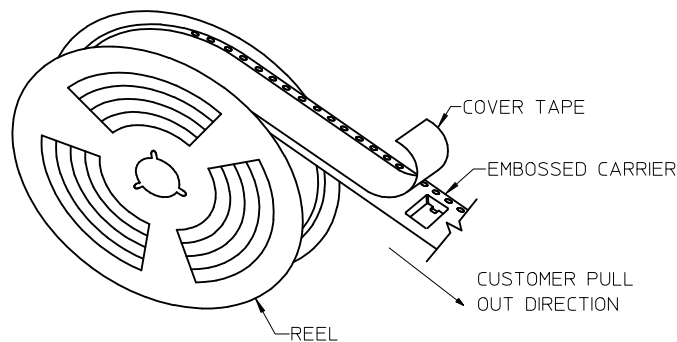
3. PACKAGING STANDARD IS AS PER EIA-481.

4. NO FIX ORIENTATION OF ASSEMBLY PART IN T&R.

5. TAPE & REEL QUANTITY : TBA

REVISED EC NO: S2012-0405 DRWN:SKANG CHKD:ATSEE APPR:MLONG	DESCRIPTION 2011/11/16 2011/12/19 2011/12/19	QUALITY SYMBOLS	GENERAL TOLERANCES (UNLESS SPECIFIED)		DIMENSION STYLE	SCALE	DESIGN UNITS	THIRD ANGLE PROJECTION		
		$F_{\Delta} = 0$	mm	INCH	MM ONLY	NTS	METRIC			
		$F_{\square} = 0$	4 PLACES	± ---	± ---	DRAWN BY	DATE	TITLE		
		$F_{\circ} = 0$	3 PLACES	± ---	± ---	JKACHL I	1991/07/02	MGRID		
		2 PLACES	± 0.20	± ---	CHECKED BY	DATE	VLPR II, 2MM DUAL ROW			
		1 PLACE	± ---	± ---	JNG	1991/07/09	TOP ENTRY RECEPT., SMT			
		ANGULAR ± 3 °		APPROVED BY	DATE	MOLEX INCORPORATED				
		DRAFT WHERE APPLICABLE MUST REMAIN WITHIN DIMENSIONS		MLONG	2009/11/24	DOCUMENT NO.		SD-87340-**-01		
		SIZE	THIS DRAWING CONTAINS INFORMATION THAT IS PROPRIETARY TO MOLEX INCORPORATED AND SHOULD NOT BE USED WITHOUT WRITTEN PERMISSION							
		A3								

PART NO. IN TUBE	PART NO. TAPE/REEL	CKT SIZE	Ao	Bo	F	W	Ko	So
87340-1014	87340-1019	10	6.70	10.40	11.50	24.00	5.30	-
87340-1613	87340-1618	16	6.60	16.30	11.50	24.00	4.40	-
87340-1424	87340-1429	14	6.60	14.40	11.50	24.00	4.40	-
87340-1813	87340-1818	18	6.60	18.40	14.20	32.00	4.40	28.40
87340-1814	87340-1819	18	6.60	18.40	14.20	32.00	4.40	28.40
87340-2024	87340-2029	20	6.60	20.30	20.20	44.00	5.40	40.40



TAPE AND REEL ASSEMBLY SHOWN IS FOR ILLUSTRATION ONLY.

REVISED EC NO: S2012-0405 DRWN:SKANG 2011/11/16 CHKD:ATSEE 2011/12/19 APPR:MLONG 2011/12/19	QUALITY SYMBOLS	GENERAL TOLERANCES (UNLESS SPECIFIED)	DIMENSION STYLE	SCALE	DESIGN UNITS	THIRD ANGLE PROJECTION
	$F_A=0$	mm INCH	MM ONLY	NTS	METRIC	
	$F_G=0$	4 PLACES ± --- ± ---	DRAWN BY DATE	TITLE		
	$F_P=0$	3 PLACES ± --- ± ---	JKACHL I 1991/07/02	MGRID		
	2 PLACES ± 0.20 ± ---	CHECKED BY DATE	VLPR II, 2MM DUAL ROW			
	1 PLACE ± --- ± ---	JNG 1991/07/09	TOP ENTRY RECEPT., SMT			
	ANGULAR ± 3 °	APPROVED BY DATE	MOLEX INCORPORATED			
		MLONG 2009/11/24	MATERIAL NO. DOCUMENT NO. SHEET NO.			
			SEE TABLE SD-87340-**01 3 OF 3			
			THIS DRAWING CONTAINS INFORMATION THAT IS PROPRIETARY TO MOLEX INCORPORATED AND SHOULD NOT BE USED WITHOUT WRITTEN PERMISSION			