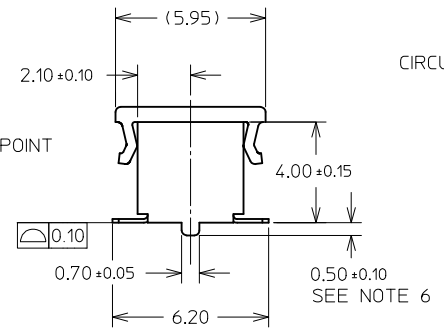
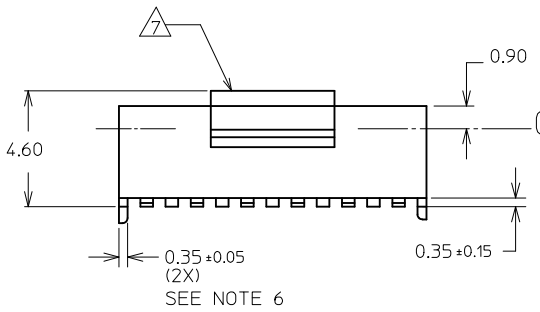


CONNECTOR ORIENTATION IN TUBE



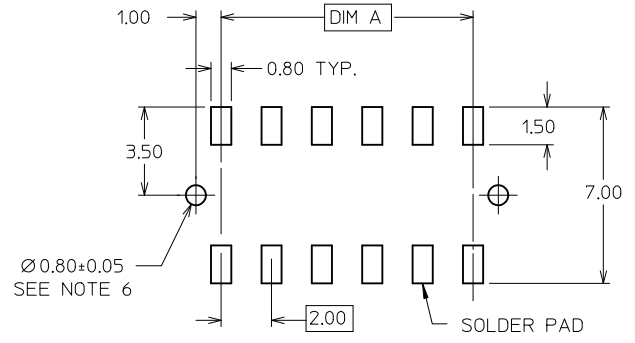
PART NO. LEGEND

87381 - \* \* \* \*  
 CIRCUIT SIZE  
 PLATING  
 5  
 9 (SEE NOTE 1)  
 PEG OPTION  
 0 WITHOUT PEG  
 1 WITH PEG

| PART NUMBER<br>W/ CAP IN TUBE | CKT.<br>SIZE | DIM A | DIM B |
|-------------------------------|--------------|-------|-------|
| 87381-04**                    | 4            | 2.00  | 4.00  |
| 87381-06**                    | 6            | 4.00  | 6.00  |
| 87381-08**                    | 8            | 6.00  | 8.00  |
| 87381-10**                    | 10           | 8.00  | 10.00 |
| 87381-12**                    | 12           | 10.00 | 12.00 |
| 87381-141*                    | 14           | 12.00 | 14.00 |
| 87381-16**                    | 16           | 14.00 | 16.00 |
| 87381-18**                    | 18           | 16.00 | 18.00 |
| 87381-20**                    | 20           | 18.00 | 20.00 |
| 87381-22**                    | 22           | 20.00 | 22.00 |
| 87381-24**                    | 24           | 22.00 | 24.00 |
| 87381-26**                    | 26           | 24.00 | 26.00 |
| 87381-28**                    | 28           | 26.00 | 28.00 |
| 87381-30**                    | 30           | 28.00 | 30.00 |
| 87381-32**                    | 32           | 30.00 | 32.00 |
| 87381-34**                    | 34           | 32.00 | 34.00 |
| 87381-36**                    | 36           | 34.00 | 36.00 |
| 87381-38**                    | 38           | 36.00 | 38.00 |
| 87381-40**                    | 40           | 38.00 | 40.00 |
| 87381-42**                    | 42           | 40.00 | 42.00 |
| 87381-44**                    | 44           | 42.00 | 44.00 |
| 87381-46**                    | 46           | 44.00 | 46.00 |
| 87381-48**                    | 48           | 46.00 | 48.00 |
| 87381-50**                    | 50           | 48.00 | 50.00 |

NOTES:

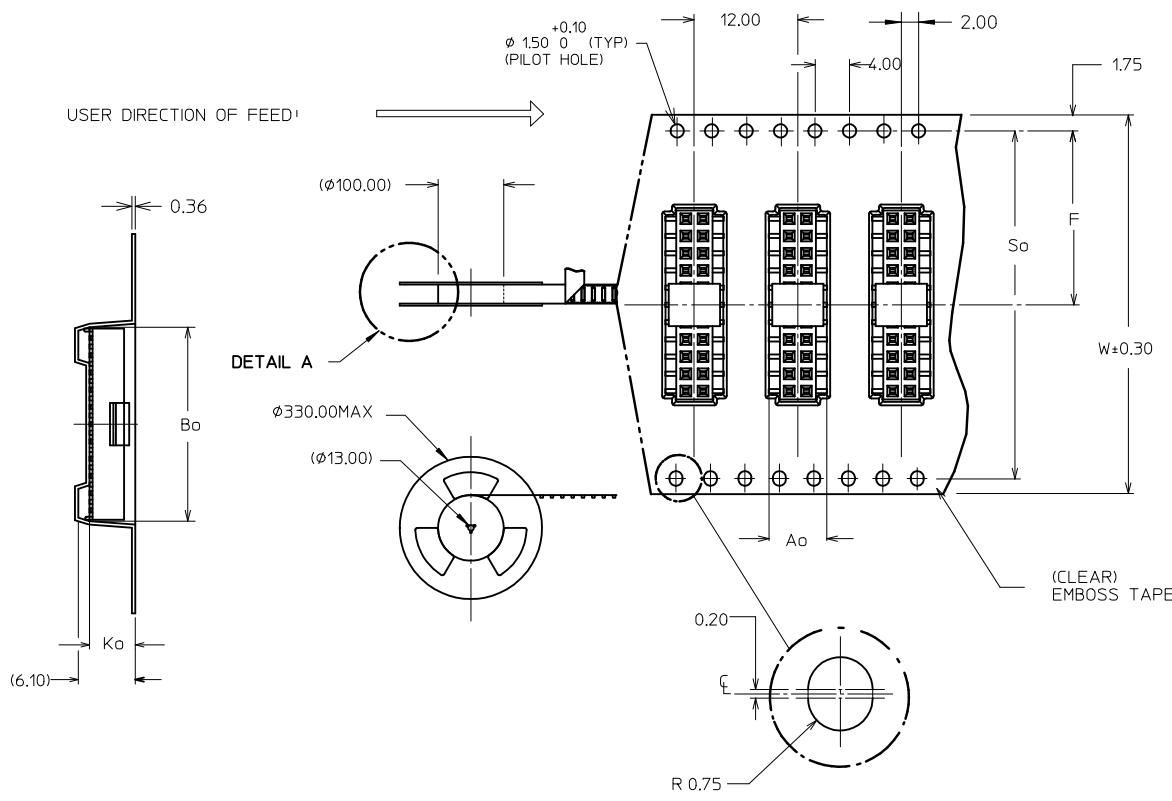
- PLATING FINISH :
  - 5 - 0.76µm MIN. GOLD IN CONTACT AREA  
1.27µm MIN TIN IN SOLDER TAIL AREA  
BOTH OVER 1.27µm MIN NICKEL OVERALL
  - 9 - 0.38µm MIN GOLD IN CONTACT AREA  
1.27µm MIN TIN IN SOLDER TAIL AREA  
BOTH OVER 1.27µm MIN NI OVERALL
- MATERIAL:
  - HOUSING : NYLON 4/6, 94V-0, COLOUR BLACK
  - CAP : NYLON, GLASS FILLED, COLOUR BLACK
  - TERMINAL : COPPER ALLOY
  - EMBOSS TAPE : CLEAR POLYSTYRENE
  - COVER TAPE : CLEAR POLYESTER
- PRODUCT SPECIFICATION PS-87380 APPLIES
- COPLANARITY OF SOLDER TAILS ARE TO BE MEASURED BY RESTING THE PART ON A FLAT GAUGE SURFACE
- OTHER PLATING OPTIONS AVAILABLE. PLEASE CONTACT FACTORY
- PEG AND PCB HOLE OPTIONAL. SEE PART LEGEND FOR PART CONFIGURATON
- △ POSITION OF CAP TO BE LOCATED AT CENTER OF DIM A REGARDLESS OF CKT SIZES.
- 12 CKT SIZE SHOWN FOR ILLUSTRATION ONLY. SEE CHART FOR ALL AVAILABLE PART SIZES. 22 CKT ILLUSTRATED FOR TAPE/REEL VERSION ON SHT 2.
- PACKING QTY PER REEL IS APPROX. 800PCS.
- PARTS SHALL BE PACKED IN MOISTURE BARRIER BAG.



RECOMMENDED PCB LAYOUT

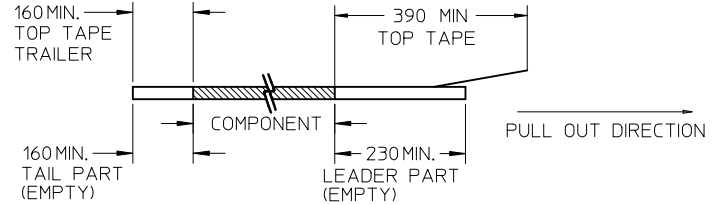
|  |                 |   |                                      |   |              |                        |  |
|--|-----------------|---|--------------------------------------|---|--------------|------------------------|--|
| CHANGE CAP MAT'L<br>EC NO: S2011-0761<br>DRWN:SKANG 2011/03/18<br>CHKD:ATSEE 2011/03/30<br>APPR:MLONG 2011/03/30 | QUALITY SYMBOLS | GENERAL TOLERANCES (UNLESS SPECIFIED)   | DIMENSION STYLE                      | SCALE   | DESIGN UNITS | THIRD ANGLE PROJECTION |  |
|  | ▽=0<br>◻=0      | mm INCH   | MM ONLY                              | NTS   | METRIC       |                        |  |
|  |                 | 4 PLACES ± --- ± ---<br>3 PLACES ± --- ± ---<br>2 PLACES ± 0.2 ± ---<br>1 PLACE ± --- ± --- | DRAWN BY DATE<br>KSEE 1999/01/06     | TITLE<br>MGRID, TOP ENTRY RECEPT.<br>4MM HT., W/PEGS/CAP<br>IN TUBE AND T&R, SMT  |              |                        |  |
|  |                 | ANGULAR ± 3 °   | CHECKED BY DATE<br>KCLING 1999/01/11 | MOLEX INCORPORATED  |              |                        |  |
|  |                 | DRAFT WHERE APPLICABLE MUST REMAIN WITHIN DIMENSIONS  | APPROVED BY DATE<br>SKTOH 1999/01/11 | DOCUMENT NO.<br>SD-87381-***3   |              | SHEET NO.<br>1 OF 2    |  |
|  |                 |   | MATERIAL NO.<br>SEE TABLE            | THIS DRAWING CONTAINS INFORMATION THAT IS PROPRIETARY TO MOLEX INCORPORATED AND SHOULD NOT BE USED WITHOUT WRITTEN PERMISSION |              |                        |  |

| CKT SIZE | PLATING FINISH<br>(SEE NOTE #1) | PART NO WITH CAP IN TAPE / REEL | PART NO WITH CAP IN TUBE |       |       |      |       |       |      |
|----------|---------------------------------|---------------------------------|--------------------------|-------|-------|------|-------|-------|------|
|          |                                 |                                 |                          | W     | So    | Ao   | F     | Bo    | Ko   |
| 08       | 9                               | 87381-9016                      | 87381-0819               | 24.00 | -     | 7.00 | 11.50 | 8.50  | 4.80 |
| 10       | 5                               | 87381-9030                      | 87381-1015               | 24.00 | -     | 7.00 | 11.50 | 10.50 | 4.80 |
| 30       | 9                               | 87381-9015                      | 87381-3019               | 56.00 | 52.40 | 7.00 | 26.20 | 30.50 | 4.80 |
| 50       | 9                               | 87381-9027                      | 87381-5019               | 72.00 | 68.40 | 7.00 | 34.20 | 50.50 | 4.80 |
| 50       | 5                               | 87381-9028                      | 87381-5015               | 72.00 | 68.40 | 7.00 | 34.20 | 50.50 | 4.80 |

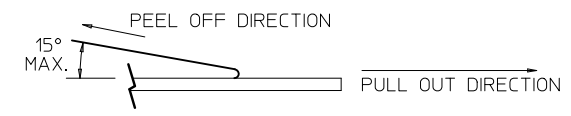


NOTES:

1. LEADER AND TRAILER TAPE



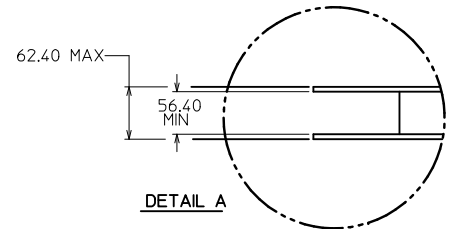
2. PEELING OFF FORCE OF THE TOP TAPE: 20-80gf.  
(PEELING DIRECTION AS SHOWN IN FOLLOWING FIGURE)



3. PACKAGING STANDARD IS AS PER EIA-481.

4. TAPE & REEL QUANTITY = 800 PCS/REEL

TAPE & REEL ORIENTATION (22 CKT SHOWN FOR REF)  
(NTS)



|                  |                   |            |                 |
|------------------|-------------------|------------|-----------------|
| CHANGE CAP MAT'L | EC NO: S2011-0761 | 2011/03/18 | QUALITY SYMBOLS |
|                  | DRWN:SKANG        | 2011/03/30 |                 |
|                  | CHKD:ATSEE        | 2011/03/30 |                 |
|                  | APPR:MLONG        | 2011/03/30 |                 |
| REV              | DESCRIPTION       |            |                 |

|  |               |       |       |
|--|---------------|-------|-------|
| GENERAL TOLERANCES<br>(UNLESS SPECIFIED)                   | mm            | INCH  |       |
|  | 4 PLACES      | ± --- | ± --- |
|  | 3 PLACES      | ± --- | ± --- |
|  | 2 PLACES      | ± 0.2 | ± --- |
|  | 1 PLACE       | ± --- | ± --- |
|  | ANGULAR ± 3 ° |       |       |
| DRAFT WHERE APPLICABLE<br>MUST REMAIN<br>WITHIN DIMENSIONS |               |       |       |

|                            |   |
|----------------------------|---|
| DIMENSION STYLE<br>MM ONLY |   |
| DRAWN BY                   | DATE  |
| KSEE                       | 1999/01/06  |
| CHECKED BY                 | DATE  |
| KCLING                     | 1999/01/11  |
| APPROVED BY                | DATE  |
| SKTOH                      | 1999/01/11  |
| MATERIAL NO.               | DOCUMENT NO.  |
| SEE TABLE                  | SD-87381-***3   |
| SIZE<br>A3                 | THIS DRAWING CONTAINS INFORMATION THAT IS PROPRIETARY TO MOLEX INCORPORATED AND SHOULD NOT BE USED WITHOUT WRITTEN PERMISSION |

|  |                        |                           |
|--|------------------------|---------------------------|
| SCALE<br>NTS   | DESIGN UNITS<br>METRIC | THIRD ANGLE<br>PROJECTION |
| TITLE<br>MGRID, TOP ENTRY RECEPT.<br>4MM HT., W/PEGS/CAP<br>IN TUBE AND T&R, SMT |                        |                           |
| MOLEX INCORPORATED   |                        |                           |
| DOCUMENT NO.<br>SD-87381-***3  |                        | SHEET NO.<br>2 OF 2       |