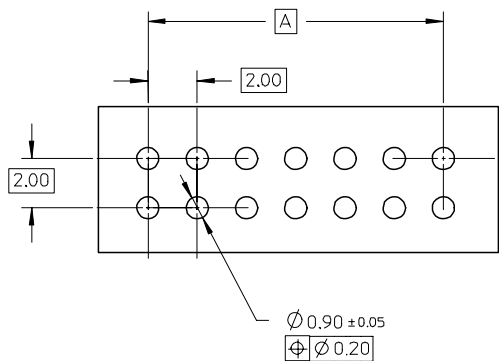
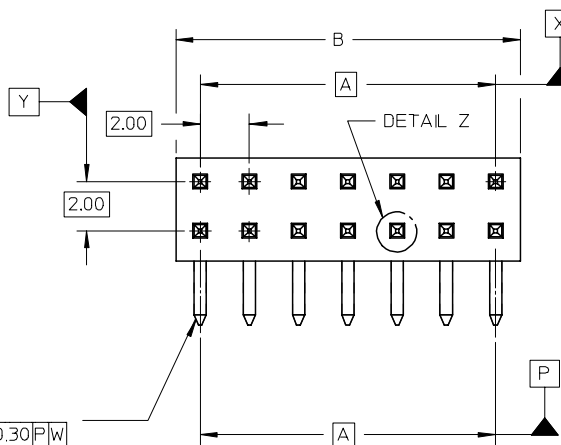
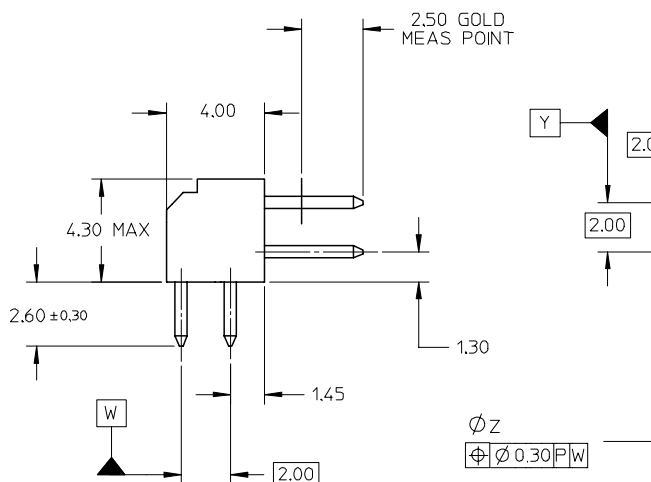
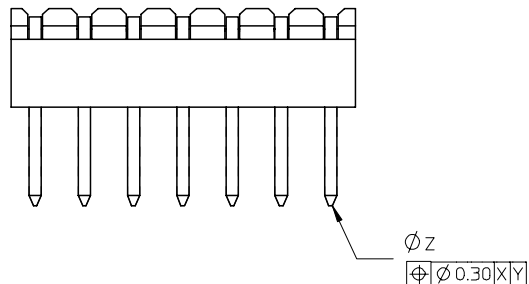
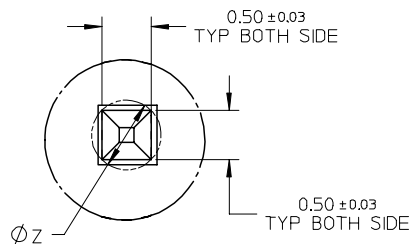


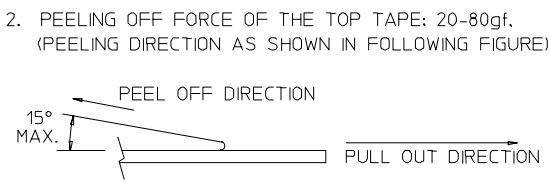
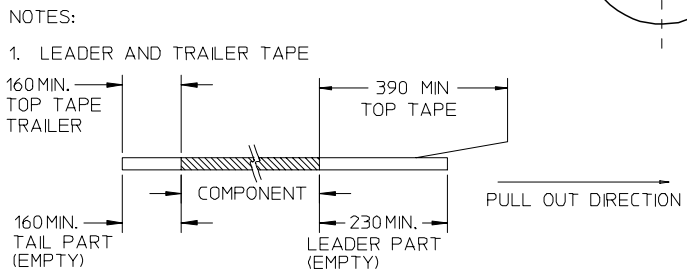
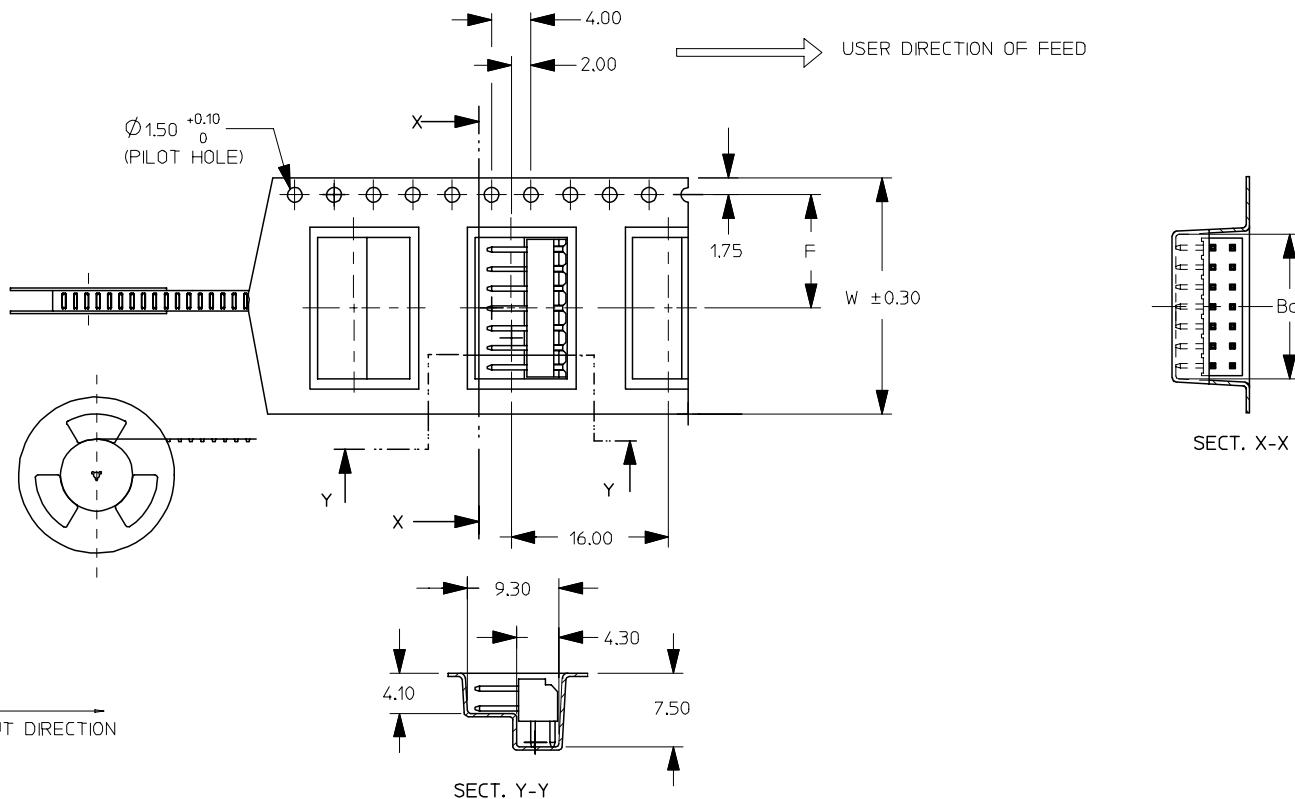
**NOTES:**

1. MATERIAL:  
HSG: PCT. GLASS FILLED,UL 94V-0,  
COLOUR BLACK.  
PIN: 0.50MM SQ PHOSPHOR BRONZE 510
2. PLATING:  
0.38um MIN GOLD IN CONTACT AREA,  
TIN IN SOLDERTAIL AREA, BOTH OVER  
NICKEL OVERALL
3. 14 CKT USED FOR ILLUSTRATION ONLY
4. PART TO BE PACKED IN TAPE & REEL (SEE SHT 2).
5. PRODUCT SPEC PS-87761-100 APPLIES.
6. RECOMMENDED PCB BOARD THK 1.60±0.10 MM.



ADD OPTION EC NO: S2006-0432 DRWN: LO/IAO CHKD: BOKOK APPR: PTL/IM 2005/10/27 2005/10/27 2005/10/28	QUALITY SYMBOLS	GENERAL TOLERANCES (UNLESS SPECIFIED)		DIMENSION STYLE	SCALE	DESIGN UNITS	THIRD ANGLE PROJECTION	
	$\nabla = 0$ $\sphericalangle = 0$	mm	INCH	MM ONLY	NTS	METRIC		
		4 PLACES ± ---	± ---	DRAWN BY	DATE	TITLE		
		3 PLACES ± ---	± ---	KSEE	2003/10/17	SALES DRAWING		
	2 PLACES ± 0.2	± ---	CHECKED BY	DATE	MGRID, 2MM DUAL ROW HDR.			
	1 PLACE ± ---	± ---	KCLING	2003/12/02	IN TAPE & REEL, R/A			
		ANGULAR ± 1 °	APPROVED BY	DATE	MOLEX INCORPORATED			
			SKTOH	2003/12/11	MATERIAL NO.	DOCUMENT NO.	SHEET NO.	
					SEE TABLE	SD-87760-147	1 OF 2	
A1	REV	DRAFT WHERE APPLICABLE MUST REMAIN WITHIN DIMENSIONS		THIS DRAWING CONTAINS INFORMATION THAT IS PROPRIETARY TO MOLEX INCORPORATED AND SHOULD NOT BE USED WITHOUT WRITTEN PERMISSION				

	10	9	8	7	6	5	4	3	2	1
F	PART NUMBER (IN TAPE/REEL)	PART NUMBER (IN TRAY)	CKT SIZE	A	B	Bo	F	So	W	
	87760-8010	87760-1416	14	12.00	14.00	14.40	11.50	-	24.00	
	87760-8112	87760-1216	12	10.00	12.00	12.40	11.50	-	24.00	



3. PACKAGING STANDARD IS AS PER EIA-481.
4. TAPE & REEL QUANTITY = 500 PCS/REEL

<b>ADD OPTION</b> EC NO: S2006-0432 DRWN: LO/IAO CHKD: BOKOK APPR: PTL/IM	2005/10/27 2005/10/27 2005/10/28	<b>DESCRIPTION</b> ADD OPTION	<b>QUALITY SYMBOLS</b> $\nabla=0$ $\sphericalangle=0$	<b>GENERAL TOLERANCES (UNLESS SPECIFIED)</b>		<b>DIMENSION STYLE</b> MM ONLY		<b>SCALE</b> NTS	<b>DESIGN UNITS</b> METRIC	THIRD ANGLE PROJECTION			
				4 PLACES ± --- ± ---	3 PLACES ± --- ± ---	2 PLACES ± 0.2 ± ---	1 PLACE ± --- ± ---	ANGULAR ± 1 °	DRAWN BY KSEE	DATE 2003/10/17	<b>TITLE</b> SALES DRAWING MGRID, 2MM DUAL ROW HDR. IN TAPE & REEL, R/A		
				DRAFT WHERE APPLICABLE MUST REMAIN WITHIN DIMENSIONS		SEE TABLE	MATERIAL NO. SKTOH	APPROVED BY DATE 2003/12/11	<b>MOLEX INCORPORATED</b>			DOCUMENT NO. SD-87760-147	SHEET NO. 2 OF 2
				THIS DRAWING CONTAINS INFORMATION THAT IS PROPRIETARY TO MOLEX INCORPORATED AND SHOULD NOT BE USED WITHOUT WRITTEN PERMISSION									