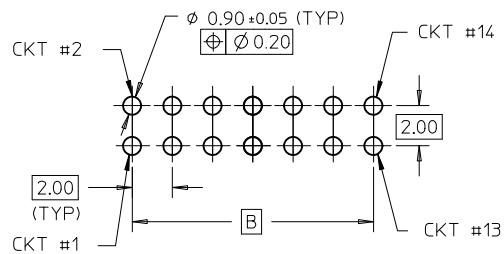


REF : ORIENTATION OF PART WITHOUT CAP IN TUBE  
(FOR THE REFERENCE OF PART/TUBE ASSEMBLY)

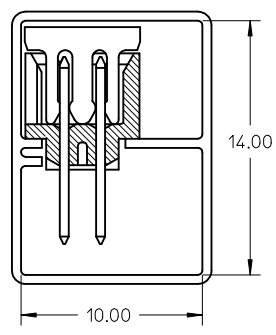
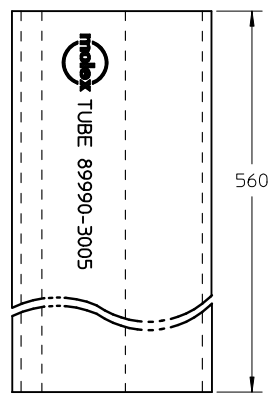


RECOMMENDED PCB PATTERN

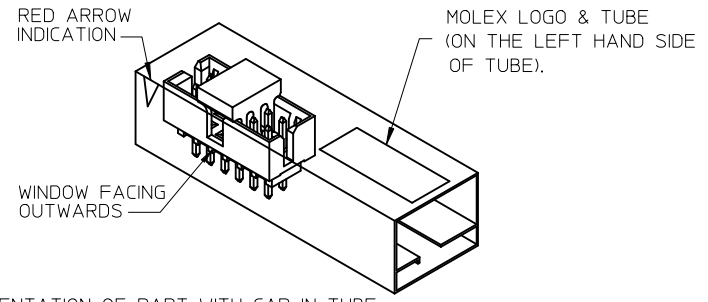
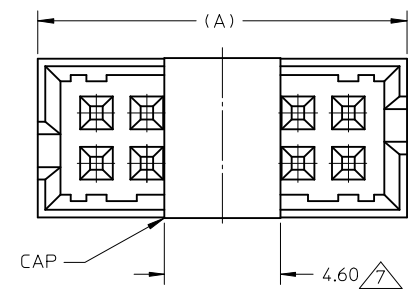
ADD 87831-1411 EC NO: S2010-0927 DRW:ATSEE 2010/10/19 CHKD:SKANG 2010/10/28 APPR:MLONG 2010/10/28	QUALITY SYMBOLS F <sub>A</sub> =0 F <sub>C</sub> =0 F <sub>P</sub> =0	GENERAL TOLERANCES (UNLESS SPECIFIED)		DIMENSION STYLE	SCALE	DESIGN UNITS	THIRD ANGLE PROJECTION
		mm	INCH	MM ONLY	NTS	METRIC	
A11	REV	4 PLACES	± ---	± ---	DRAWN BY	DATE	TITLE
		3 PLACES	± ---	± ---	ATSEE	2004/01/07	
		2 PLACES	± 0.2	± ---	CHECKED BY	DATE	MOLEX INCORPORATED
		1 PLACE	± ---	± ---	KCLING	2004/01/14	
		ANGULAR ± 3 °		APPROVED BY	DATE		SHEET NO. 1 OF 3
		DRAFT WHERE APPLICABLE MUST REMAIN WITHIN DIMENSIONS		MLONG	2010/10/28		
		SEE TABLE		MATERIAL NO.	DOCUMENT NO.		
		THIS DRAWING CONTAINS INFORMATION THAT IS PROPRIETARY TO MOLEX INCORPORATED AND SHOULD NOT BE USED WITHOUT WRITTEN PERMISSION					

10 9 8 7 6 5 4 3 2 1

TUBE PACKAGING WITH CAP



ASSY P/N WITHOUT CAP IN TUBE	ASSY P/N WITH CAP IN TUBE	ASSY P/N WITH CAP IN T&R	CKT SIZE	VOID PIN LOCATION	DIMENSION					PLATING OPTIONS
					A	B	C	D	E	
87831-1010	-	-	10	-	12.65	8.00	11.00	10.85	----	1
87831-1410	-	-	14	-	16.65	12.00	15.00	14.85	8.00	1
87831-1411	-	-	14	-	16.65	12.00	15.00	14.85	8.00	3
87831-2010	-	-	20	-	22.65	18.00	21.00	20.85	14.00	1
87831-2011	-	-	20	-	22.65	18.00	21.00	20.85	14.00	3
87831-2610	-	-	26	-	28.65	24.00	27.00	26.85	20.00	1
87831-3010	87831-3030	87831-3050	30	-	32.65	28.00	31.00	30.85	24.00	1
87831-7101	-	-	34	21	36.65	32.00	35.00	34.85	28.00	1
87831-7102	-	-	34	21	36.65	32.00	35.00	34.85	28.00	2
87831-4010	-	-	40	-	42.65	38.00	41.00	40.85	34.00	1



ORIENTATION OF PART WITH CAP IN TUBE.  
(FOR THE REFERENCE OF PART/TUBE ASSEMBLY)

NOTES:

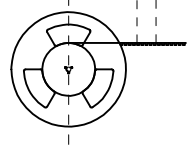
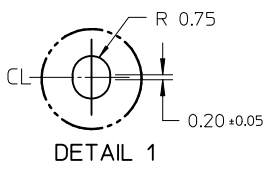
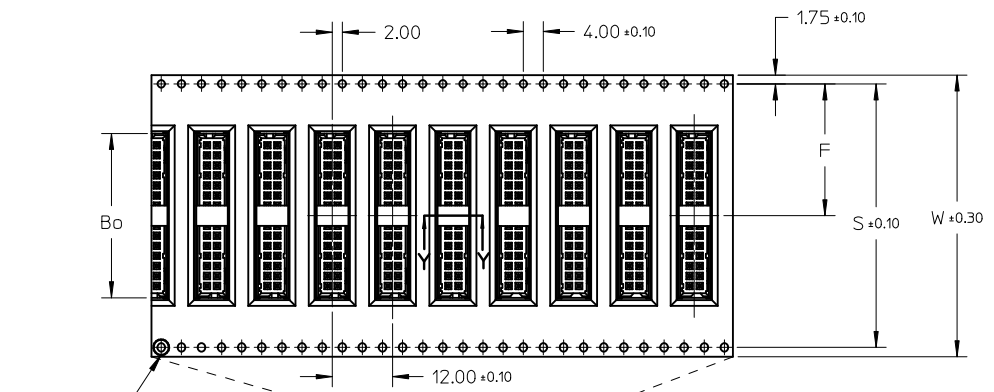
- MATERIAL :  
HOUSING : NYLON 46 GLASS FILLED, UL94V-0, COLOR BLACK.  
PIN : 0.50MM SQ. PHOSPHOR BRONZE.
- PLATING OPTIONS :  
1 - 0.38um/15uin MIN. GOLD IN CONTACT AREA AND 1.88um/75uin MIN.TIN  
IN SOLDER TAIL AREA OVER 1.27um/50uin MIN. NICKEL OVERALL.  
2 - GOLD FLASH IN CONTACT AREA AND 1.88um/75uin MIN.TIN  
IN SOLDER TAIL AREA OVER 1.27um/50uin MIN. NICKEL OVERALL.  
3 - 0.76um/30uin MIN. GOLD IN CONTACT AREA AND 1.88um/75uin MIN.TIN  
IN SOLDER TAIL AREA OVER 1.27um/50uin MIN. NICKEL OVERALL.
- PRODUCT SPECIFICATION PS-87831-027 APPLIES.
- THIS HEADER MATES WITH MOLEX :  
a) CRIMP RECEPTACLE HOUSING, 51110 SERIES WITH CRIMP TERMINAL,  
50394 SERIES.  
b) 2MM MILLIGRID DUAL ROW IDT, 87568 SERIES.
- NO SIDE LOCKING SLOT FROM 4 TO 12 CKT SIZE.
- PARTS TO BE PACKED IN TAPE & REEL OR TUBE WITH  
MOISTURE BARRIER BAG.
- POSITION OF CAP SHOULD BE LOCATED AT CENTER OF DIM A  
REGARDLESS OF CIRCUIT SIZE.

ADD 87831-1411 EC NO: S2010-0927 DR:WATSEE 2010/10/19 CHKD:SKANG 2010/10/28 APPR:MLONG 2010/10/28	QUALITY SYMBOLS F <sub>A</sub> =0 F <sub>C</sub> =0 F <sub>P</sub> =0	GENERAL TOLERANCES (UNLESS SPECIFIED)		DIMENSION STYLE MM ONLY		SCALE NTS	DESIGN UNITS METRIC	THIRD ANGLE PROJECTION		
		mm	INCH	DRAWN BY ATSEE	DATE 2004/01/07	TITLE MGRID, SHROUDED HEADER VERTICAL WITH 3.50MM TAIL LENGTH				
		4 PLACES ± --- ± ---	3 PLACES ± --- ± ---	CHECKED BY KCL ING	DATE 2004/01/14	MOLEX INCORPORATED				
		2 PLACES ± 0.2 ± ---	1 PLACE ± --- ± ---	APPROVED BY MLONG	DATE 2010/10/28	MATERIAL NO. SEE TABLE		DOCUMENT NO. SD-87831-026	SHEET NO. 2 OF 3	
DRAFT WHERE APPLICABLE MUST REMAIN WITHIN DIMENSIONS		THIS DRAWING CONTAINS INFORMATION THAT IS PROPRIETARY TO MOLEX INCORPORATED AND SHOULD NOT BE USED WITHOUT WRITTEN PERMISSION								

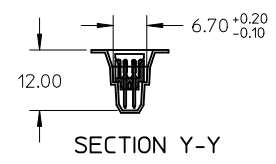
9 8 7 6 5 4 3 2 1

10 9 8 7 6 5 4 3 2 1

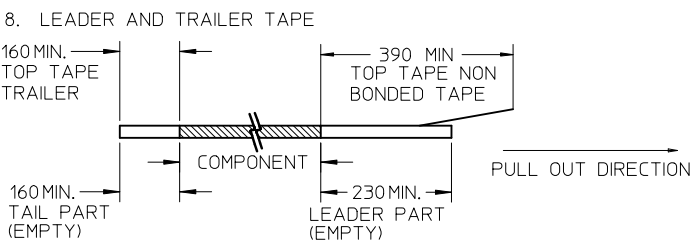
ASSY P/N WITH CAP IN T&R	CKT SIZE	(F)	(Bo)	(W)	(S)
87831-3050	30	26.20	33.05	56.00	52.40



CUSTOMER PULL OUT DIRECTION



NOTES:



9. PEELING OFF FORCE OF THE TOP TAPE: 20-80gf.  
(PEELING DIRECTION AS SHOWN IN FOLLOWING FIGURE)



10. PACKAGING STANDARD IS AS PER EIA-481.

11. TAPE & REEL QUANTITY : 400PCS/REEL

ADD 87831-1411 EC NO: S2010-0927 DRW:ATSEE 2010/10/19 CHKD:SKANG 2010/10/28 APPR:MLONG 2010/10/28	QUALITY SYMBOLS $F_A=0$ $F_G=0$ $F_P=0$	GENERAL TOLERANCES (UNLESS SPECIFIED)		DIMENSION STYLE MM ONLY		SCALE NTS	DESIGN UNITS METRIC	THIRD ANGLE PROJECTION		
			mm	INCH	DRAWN BY	DATE	TITLE			
		4 PLACES	± ---	± ---	ATSEE	2004/01/07	MGRID, SHROUDED HEADER VERTICAL WITH 3.50MM TAIL LENGTH			
		3 PLACES	± ---	± ---	CHECKED BY	DATE				
2 PLACES	± 0.2	± ---	KCL ING	2004/01/14	MOLEX INCORPORATED					
1 PLACE	± ---	± ---	APPROVED BY	DATE						
ANGULAR ± 3 °		DRAFT WHERE APPLICABLE MUST REMAIN WITHIN DIMENSIONS		MLONG	2010/10/28	MATERIAL NO. SEE TABLE		DOCUMENT NO. SD-87831-026		
SIZE A3		THIS DRAWING CONTAINS INFORMATION THAT IS PROPRIETARY TO MOLEX INCORPORATED AND SHOULD NOT BE USED WITHOUT WRITTEN PERMISSION								

9 8 7 6 5 4 3 2 1