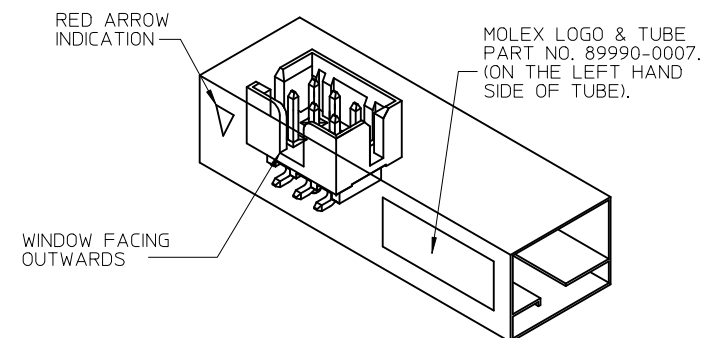
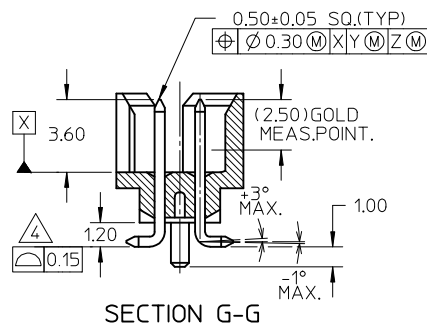
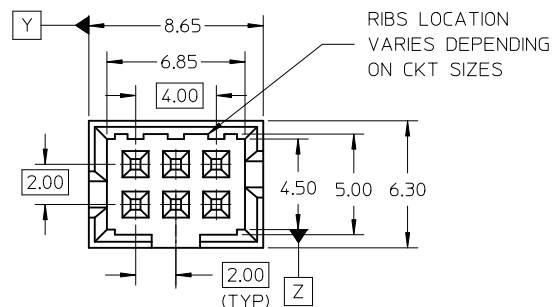
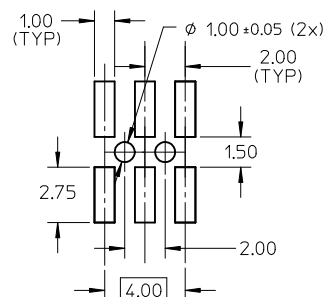
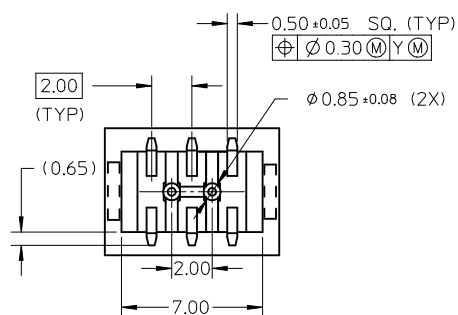
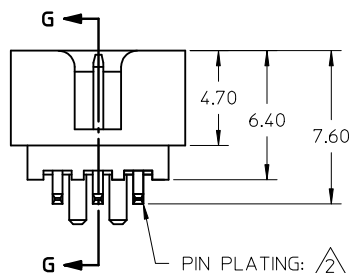


P/N IN TUBE	PEG OPTION	CKT SIZE
87832-063*	YES	6



REF : ORIENTATION OF PART IN TUBE.
(FOR THE REFERENCE OF PART/TUBE ASSEMBLY.)



RECOMMENDED PCB PATTERN

NOTES:

- MATERIAL :
HOUSING : 30% G.F., NYLON 46, UL94V-0, COLOR BLACK.
PIN : 0.50MM SQ.PHOSPHOR BRONZE.
- PLATING :
33 - 0.38um/15uin GOLD IN CONTACT AREA AND 1.88um/75uin MIN. TIN IN SOLDER TAIL AREA OVER 1.27um/50uin MIN. NICKEL OVERALL.
34 - 0.76um/30uin GOLD IN CONTACT AREA AND 1.88um/75uin MIN. TIN IN SOLDER TAIL AREA OVER 1.27um/50uin MIN. NICKEL OVERALL.
- PRODUCT SPECIFICATION PS-87831-027 APPLIES.
- COPLANARITY IS TO BE MEASURED BY RESTING THE SOLDER TAIL ON A GAUGE SURFACE.
- BEND DEPRESSION ON SMT TAIL IS ACCEPTABLE SO LONG AS IT DOES NOT AFFECT THE OVERALL COPLANARITY OF THE TAIL.

PART NUMBER LEGEND

87832 - 06 * *
PLATING OPTIONS

REVISED	EC NO: S2012-0647	2012/02/29	2012/04/30	2012/05/03	DESCRIPTION	QUALITY SYMBOLS	<div>▽=0</div> <div>▽=0</div>	GENERAL TOLERANCES (UNLESS SPECIFIED)			DIMENSION STYLE		SCALE	DESIGN UNITS	<div>THIRD ANGLE PROJECTION</div>	TITLE	MATERIAL NO.	DOCUMENT NO.	SHEET NO.	
								MM ONLY			DATE		NTS	METRIC						MGRID, SHROUDED HEADER WITH LOCATING PEGS, SMT
								mm	INCH		DRAWN BY	2004/10/20								
								4 PLACES ± ---	± ---		CHECKED BY	DATE								
								3 PLACES ± ---	± ---		SHONG	2004/11/19								
2 PLACES ± 0.20	± ---		APPROVED BY	DATE	MOLEX INCORPORATED			SD-87832-022	1 OF 1											
1 PLACE ± ---	± ---		KCL ING	2004/11/19																
ANGULAR ± 3 °			MATERIAL NO.																	
A3	REV	DRAFT WHERE APPLICABLE MUST REMAIN WITHIN DIMENSIONS							SIZE		SEE TABLE		THIS DRAWING CONTAINS INFORMATION THAT IS PROPRIETARY TO MOLEX INCORPORATED AND SHOULD NOT BE USED WITHOUT WRITTEN PERMISSION							
		A3																		