

# MICRO SWITCH

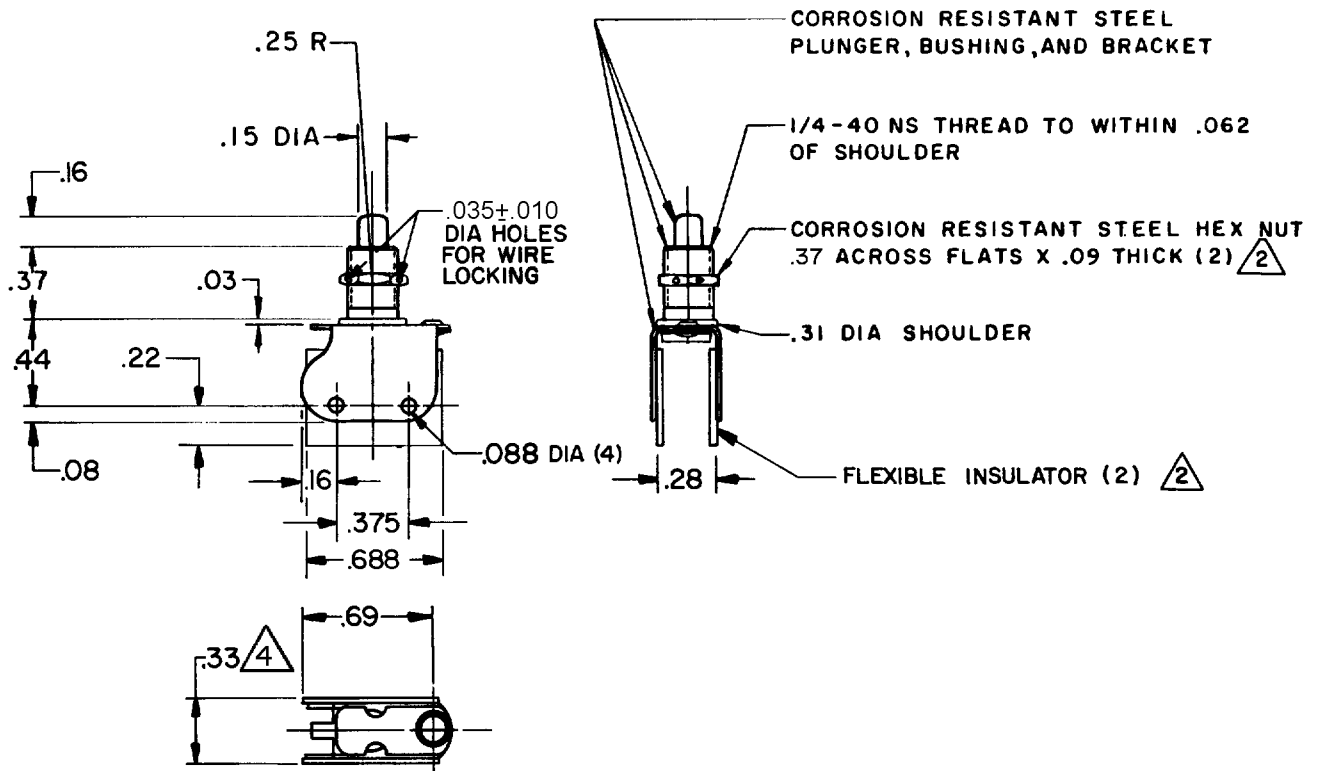
FREEPORT ILLINOIS, U.S.A  
A DIVISION OF HONEYWELL

FED. MFG. CODE 91929

## ASSEMBLY- PUSHBUTTON

CATALOG LISTING

8PA62



### NOTE-

- 1- RECOMMENDED FOR MANUAL OPERATION ONLY
- 2 FURNISHED UNASSEMBLED
- 3- UNIT WILL PERFORM SATISFACTORILY IN TEMPERATURES UP TO 400°
- 4 MEASURED AT THE SHOULDER

THIS DRAWING COVERS A PROPRIETARY ITEM AND IS THE PROPERTY OF MICRO SWITCH, A DIVISION OF HONEYWELL. THIS DRAWING IS NOT TO BE COPIED OR USED WITHOUT THE APPROVAL OF MICRO SWITCH.

### CHARACTERISTICS

TOTAL FORCE TO MOVE PLUNGER FROM FREE  
POSITION TO FLUSH WITH BUSHING TOP --  
2 LBS MAX

TOTAL TRAVEL OF PLUNGER FROM FREE  
POSITION TO FLUSH WITH BUSHING TOP --  
.235 MAX

### ELECTRICAL DATA

#### CONTACT ARRANGEMENT

### SCALE FULL

DO NOT SCALE PRINT

UNLESS OTHERWISE  
NOTED

DIMENSIONS ARE IN INCHES

### TOLERANCES ARE:

ONE PLACE	(.0)	±.030
TWO PLACE	(.00)	±.015
THREE PLACE	(.000)	±.005
ANGLES		±

WEIGHT

CATALOG LISTING  
**8PA62**  
PAGE 1 OF 1

**M**  
DRAWING  
NUMBER

7

ISSUE

REPLACES X 45499-PB

RELEASE NO. PR-2755

CHECK

REVISIONS

A	C O R R
R	C R
22	APR 71
B	PR 2755
J A H	26 JUN 72
C	CO 53488
W J M	15 JUL 83
D	CO59730
3	C J H JUL 86
E	CO95769
J A H	2 JAN 00
F	201411
CSL	2 OCT 00

RASTER

DRAWN

MBS

9 FEB 71

CHECK

4 S D

10 FEB 71