

MICRO SWITCH

A DIVISION OF MINNEAPOLIS-HONEYWELL REGULATOR COMPANY
FREDERICK, ILLINOIS

FED. MFR. CODE 91929

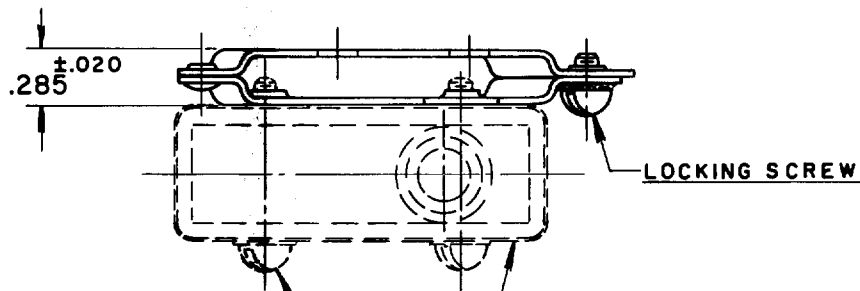
BRACKET — MOUNTING

CATALOG LISTING

8MA2

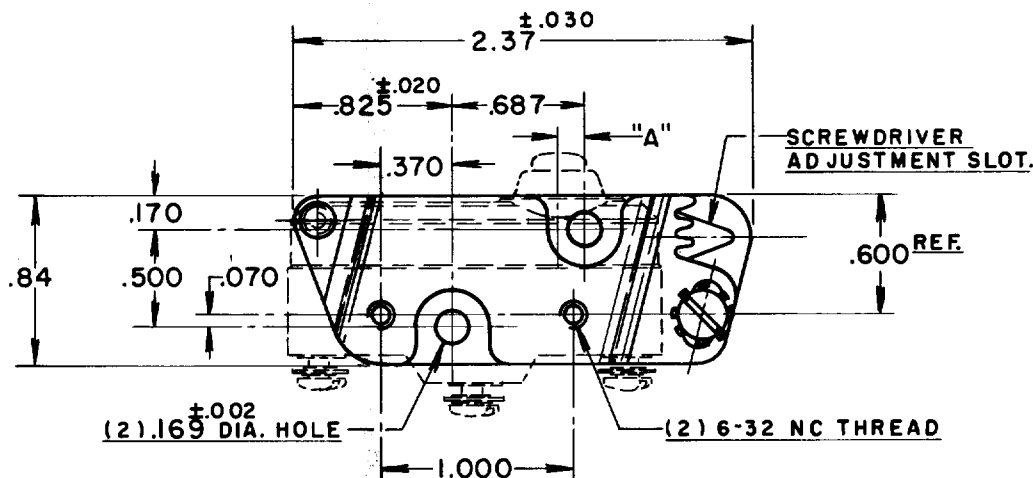
PLUNGER LOCATION

BASIC SWITCH TYPE	DIM. "A"
STANDARD	.057
TYPE Z	.140
TYPE A	.307



(2) 6-32 NC x .875^{REF} ROUND HEAD MACHINE SCREW AND LOCKWASHER (NOT FURNISHED)

DOTTED LINES INDICATE BASIC SWITCH IN PLACE.



NOTE -

- 1- BRACKET IS SHOWN AT APPROX. MIDPOINT OF TOTAL .080 ADJUSTMENT OF OPERATING POSITION.
- 2- TO ADJUST OPERATING POSITION.
 - (a) LOOSEN LOCKING SCREW SLIGHTLY.
 - (b) INSERT SCREWDRIVER WITH .188 TO .250 WIDE TIP IN ADJUSTMENT SLOT AND ROTATE IN DESIRED DIRECTION.
 - (c) TIGHTEN LOCKING SCREW

THIS DRAWING COVERS A PROPRIETARY ITEM AND IS THE PROPERTY OF MICRO SWITCH, A DIVISION OF HONEYWELL. THIS DRAWING IS NOT TO BE COPIED OR USED WITHOUT THE APPROVAL OF MICRO SWITCH.

CHARACTERISTICS

ELECTRICAL DATA

SCALE — FULL

CONTACT ARRANGEMENT

BREAK DISTANCE

DO NOT SCALE PRINT

UNLESS OTHERWISE SPECIFIED

DIMENSIONS ARE IN INCHES

TOLERANCES ARE:

ONE PLACE	(.0)	±.030
TWO PLACE	(.00)	±.018
THREE PLACE	(.000)	±.008
ANGLES		±

WEIGHT

8MA2

M

DRAWING NUMBER

ISSUE

REPLACES

RELEASE NO. SR 6518

CHECK

REVISIONS

4 JUNE '57

CHECK

13 JUNE '57

CHECK

1 JUNE '57

CHECK

1 JUNE '57

CHECK

1 JUNE '57

CHECK

1 JUNE '57

CHECK

FO-50378

DRAWN

R.L.Z.