

MICRO SWITCH

FREEPORT ILLINOIS, U.S.A
A DIVISION OF HONEYWELL INC.
FED. MFG. CODE 91929

SMALL PRECISION LIMIT SWITCH

CATALOG LISTING

914CE16-6A

914CE16-6A

M

DRAWING
NUMBER

ISSUE

REPLACES

RELEASE NO. PR-17675

CHECK

REVISIONS

CHECK

CHECK

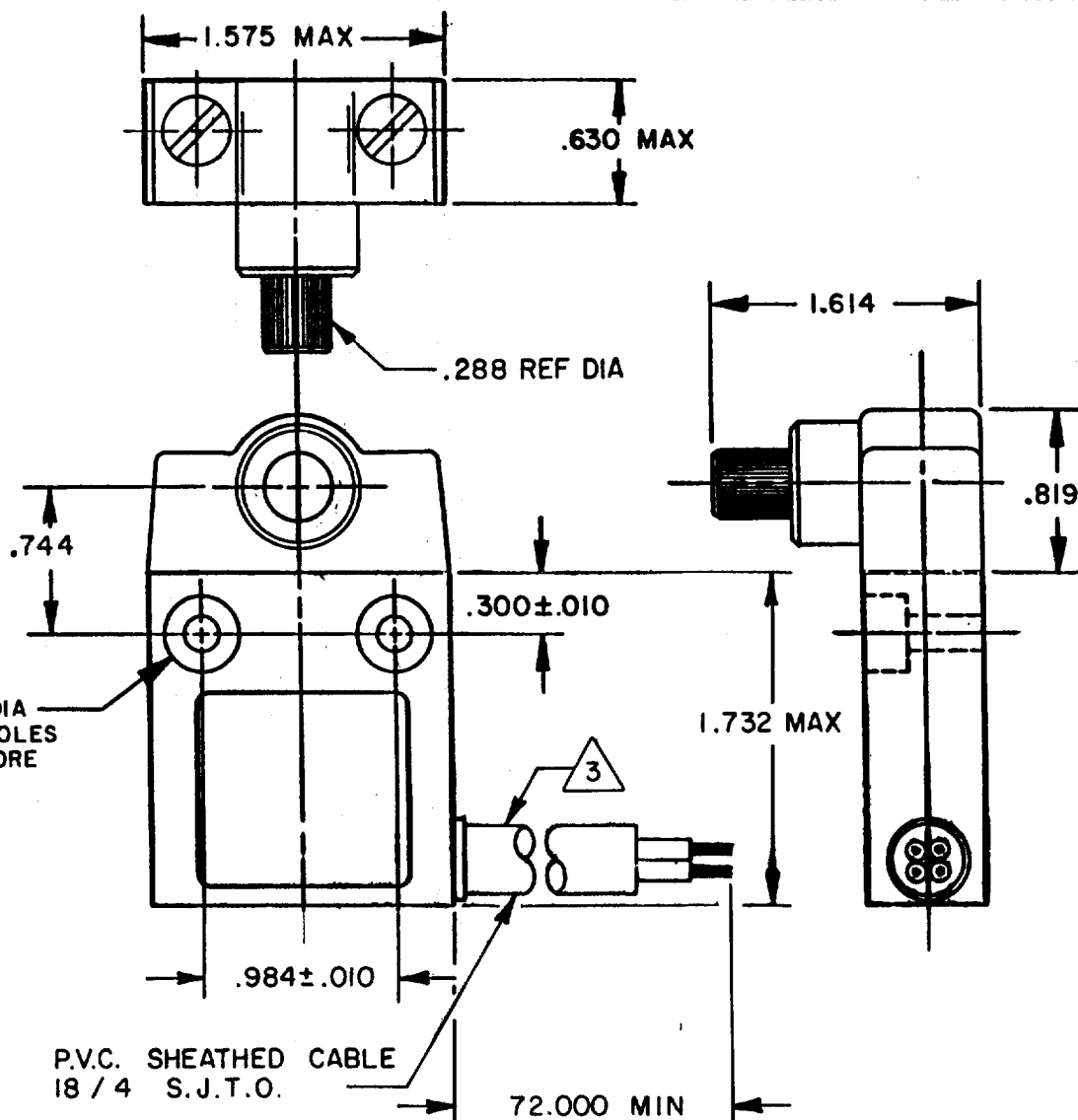
SEP 89

SEP 89

SEP 89

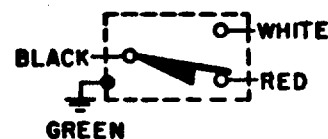
SEP 89

SEP 89



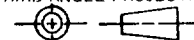
NOTES

- 1 - ZINC HOUSING FINISHED WITH GRAY PAINT
- 2 - SWITCH WILL ACTUATE IN BOTH DIRECTIONS
- 3 - SIDE EXIT CABLE



CIRCUIT DIAGRAM

THIRD ANGLE PROJECTION



THIS DRAWING COVERS A PROPRIETARY ITEM AND IS THE PROPERTY OF MICRO SWITCH, A DIVISION OF HONEYWELL. THIS DRAWING IS NOT TO BE COPIED OR USED WITHOUT THE APPROVAL OF MICRO SWITCH.

CHARACTERISTICS

OPERATING FORCE — — — — 3 IN. LB MAX
RELEASE FORCE — — — — 10 IN. OZ MAX
PRETRAVEL — — — — 30° MAX
DIFFERENTIAL TRAVEL — — — 3° MAX
OVERTRAVEL — — — — 40° MIN

ELECTRICAL DATA

CONTACT ARRANGEMENT
S P D T

5A 1/10 HP 125 OR 250 VAC



SCALE FULL

DO NOT SCALE PRINT

UNLESS OTHERWISE SPECIFIED
TOLERANCES ARE

ONE PLACE (.0) ± .030
TWO PLACE (.00) ± .015
THREE PLACE (.000) ± .005
ANGLES ±

WEIGHT

FO-52848-B

DRAWN

T J O 8