

CATALOG LISTING

BFR1-BW4

1

OF 1

RELEASE NO. 203802

REPLACES

CHECK

CHECK

7 SEP 01

SAV

CHECK

7 SEP 01

DRAWN

PTC/CAD

MICRO SWITCH  
a Honeywell Division

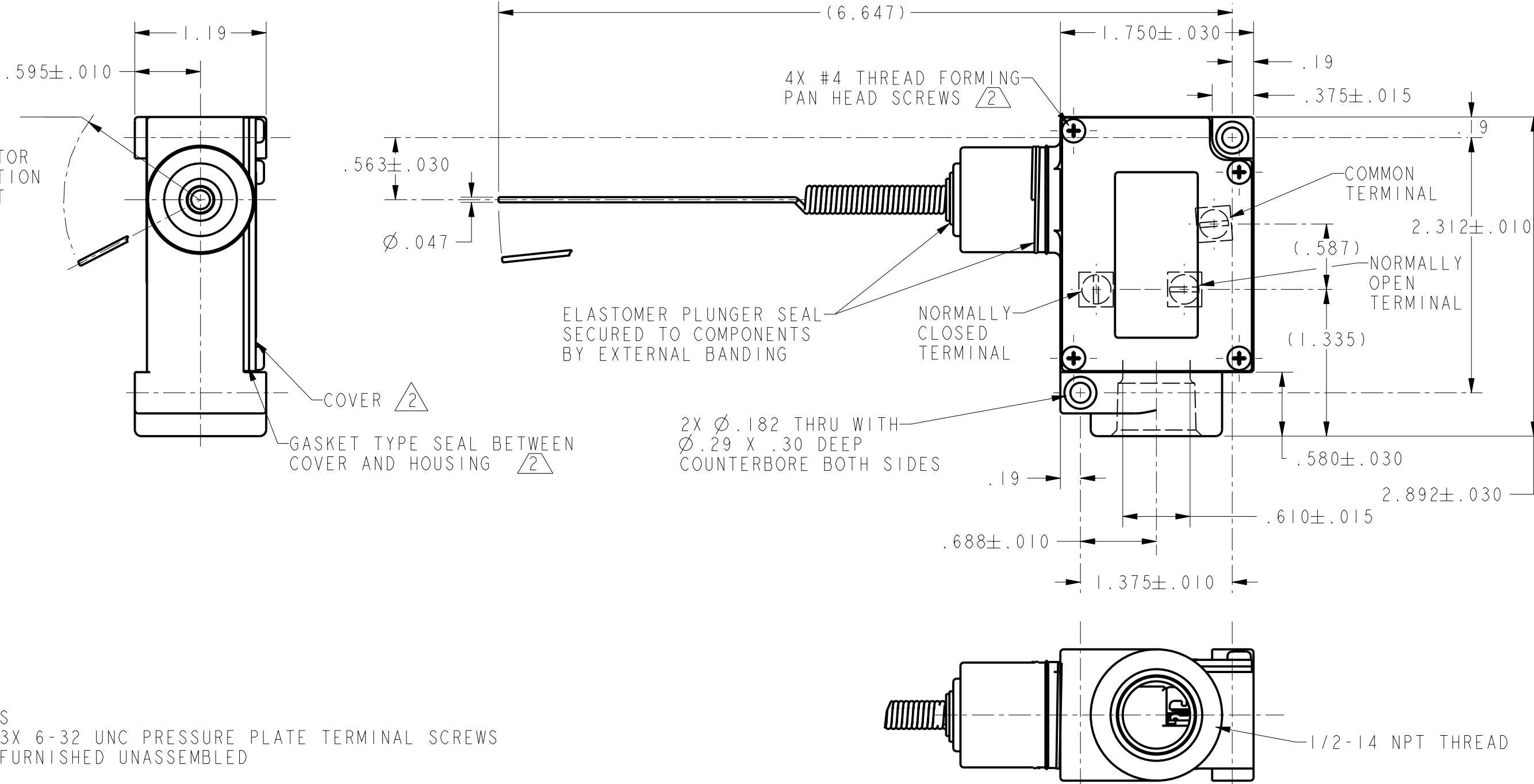
FED. MFG. CODE 91929

SWITCH-ENCLOSED

CATALOG LISTING

BFR1-BW4

SWITCH WILL  
OPERATE BY  
MOVING ACTUATOR  
IN ANY DIRECTION  
EXCEPT DIRECT  
PULL



NOTES  
1 - 3X 6-32 UNC PRESSURE PLATE TERMINAL SCREWS  
FURNISHED UNASSEMBLED

THIS DRAWING COVERS A PROPRIETARY ITEM AND IS THE PROPERTY OF MICRO SWITCH, A DIVISION OF HONEYWELL. THIS DRAWING IS NOT TO BE COPIED OR USED WITHOUT THE APPROVAL OF MICRO SWITCH

CHARACTERISTICS

ELECTRICAL DATA

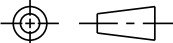
OPERATING FORCE: ..... 7 OZ MAX

CONTACT ARRANGEMENT  
S P D T

L156  
11A 1/3HP 125, 250, 277 VAC  
1/2A 125 VDC, 1/4A 250 VDC  
4A 125 VAC "L"



THIRD ANGLE PROJECTION



SCALE FULL

DO NOT SCALE PRINT

UNLESS OTHERWISE SPECIFIED  
TOLERANCES ARE

ONE PLACE (.0)  $\pm .030$   
TWO PLACE (.00)  $\pm .015$   
THREE PLACE (.000)  $\pm .005$   
ANGLES  $\pm$

WEIGHT

ANSI Y14.5M-1982 APPLIES