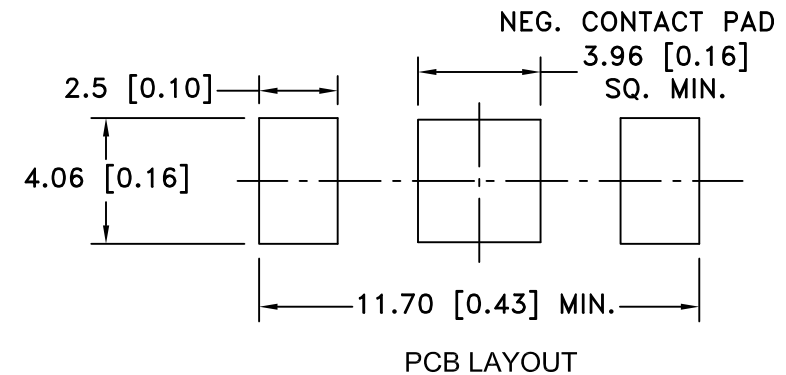
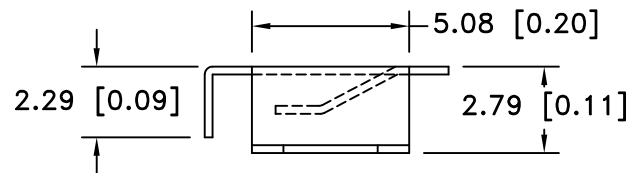
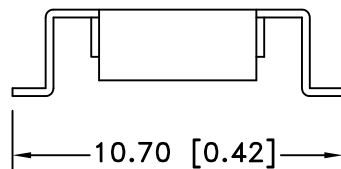
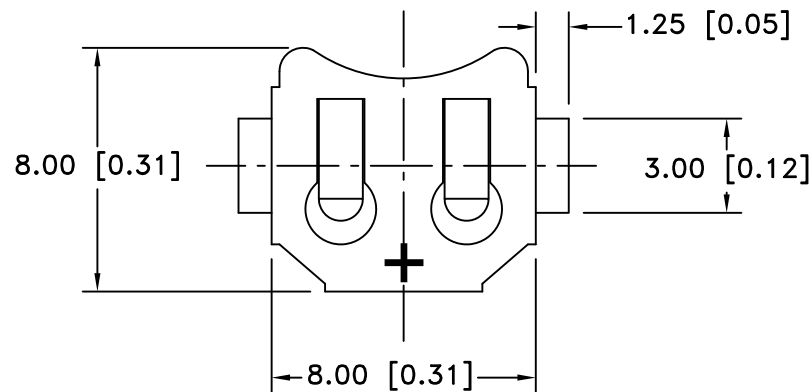



| Date     | SYM | REVISION RECORD                | AUTH | DR. | CK. |
|----------|-----|--------------------------------|------|-----|-----|
| 7/08/06  | A   | Added "ROHS COMPLIANT"         | T B  | B S |     |
| 11/11/06 | B   | REDRAWN                        | T B  | B S |     |
| 2/20/09  | C   | ADDED PCB PAD DIM.             | T B  | B S |     |
| 1/14/11  | D   | DIM. 11.70 WAS 10.67           | T B  | B S |     |
| 1/25/13  | E   | REMOVED THE HOLE Ø.76 FROM PAD | T B  | B S |     |



# NOTES:

1. MATERIAL:  
0.25mm PHOSPHOR BRONZE, NICKLE PLTD.
2. ROHS COMPLIANT

|                                |   |                          |               |
|--------------------------------|---|--------------------------|---------------|
| Tolerance<br>(Except as noted) |  <b>Memory Protection Devices, Inc</b><br>200 Broad Hollow Road, Farmingdale, New York 11735 |                          |               |
|                                |   |                          |               |
| decimal<br>±.5 (.020)          | Title<br>COIN CELL RETAINER FOR 6.8mm DIA. BATTERIES  | Scale                    | Drawn By B.S. |
| Fractional<br>± .8 (.030)      |   | Approved By T.B.         |               |
| Angular<br>± 3°                | Date<br>1/25/13   | Drawing Number<br>BK-879 |               |

| CELL SIZE | RETAINS BATTERY NUMBERS |
|-----------|-------------------------|
| 6.8mm     | MC621, V364, SC621      |