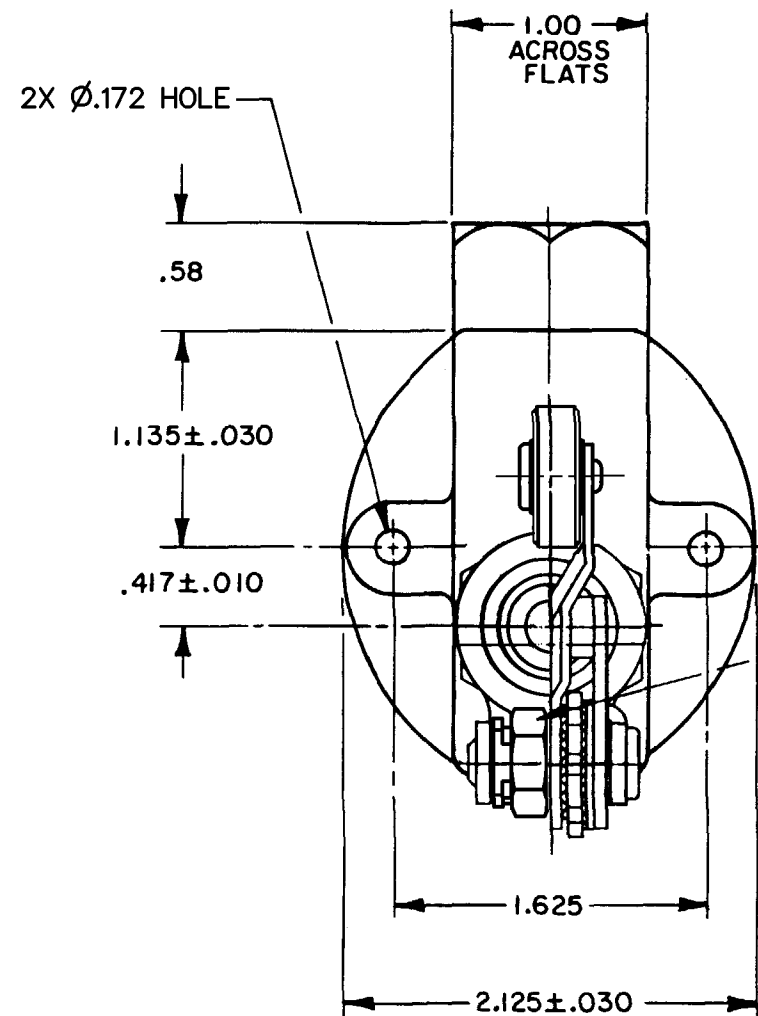


HONEYWELL
PART NUMBER
BZV6-7RN2T

REV	DOCUMENT	CHANGED BY	CHECK
10	0081896	NMN 21SEP11	CMH



HEX SEAL NUT (.938)
ACROSS FLATS

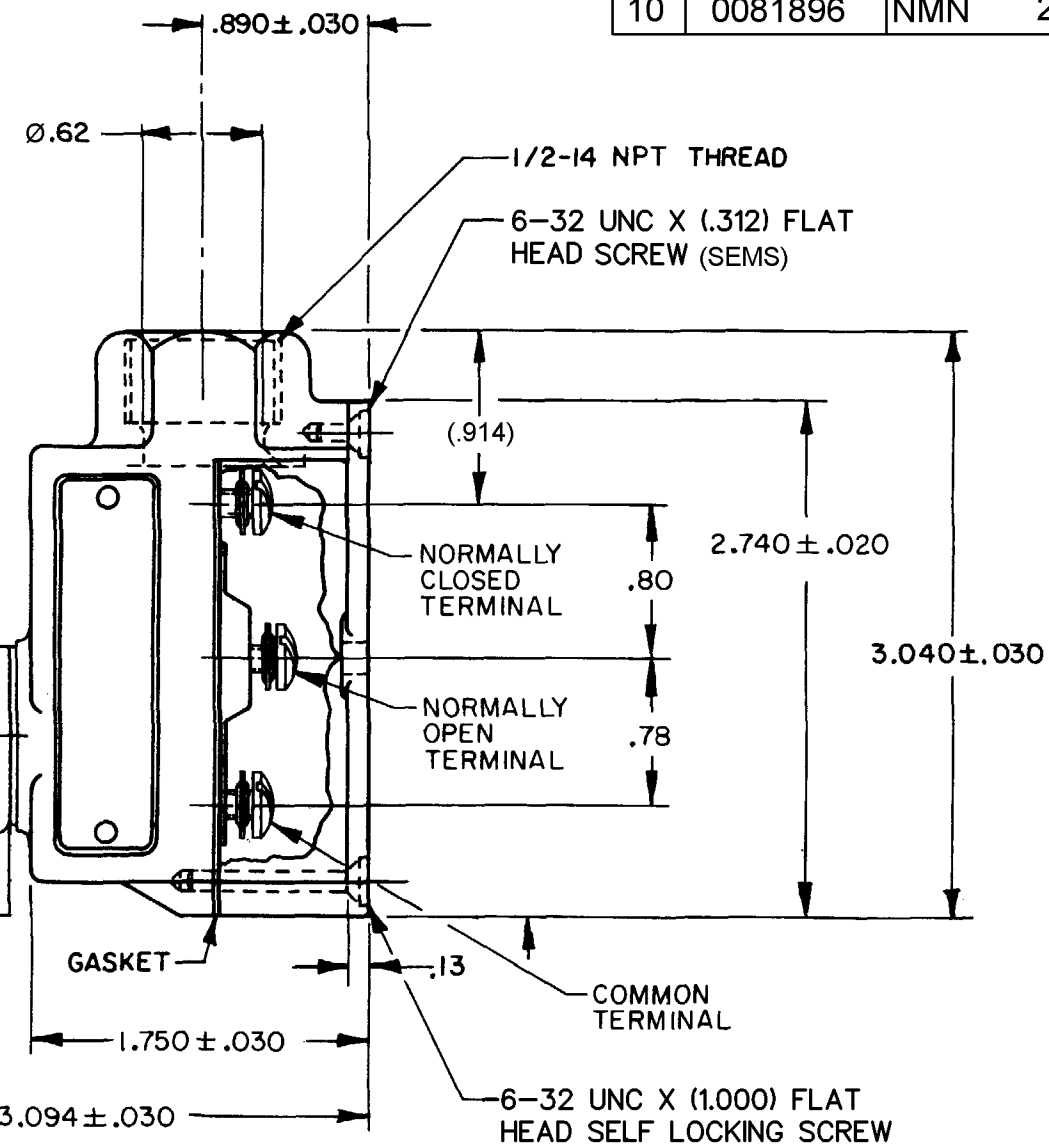
ELASTOMER PLUNGER SEAL SECURED TO
COMPONENTS BY EXTERNAL BANDING

ROLLER LEVER IS SHOWN IN ITS FREE
POSITION AT ONE EXTREME OF ITS
ADJUSTABLE RANGE

Ø.750 ± .030 X .250 ± .030 WIDE
HARDENED STEEL ROLLER

LIGHT HEX NUT
(.500) ACROSS FLATS

ROLLER LEVER MAY BE POSITIVELY
LOCKED AT INTERVALS OF APPROX
0.2° WITHIN A RANGE OF 225°
(1238 POSITIONS)



NOTES

- 1 - ZINC ENCLOSURE
- 2 - ROLLER LEVER BRACKET ASSEMBLY MAY BE SET AT ANY POSITION AROUND AXIS OF PLUNGER
- 3 - 3X 6-32 UNC X (.219) TERMINAL SCREWS AND WASHERS (SEMS)
- 4 - SEALED FOR NEMA 1, 3, 4 AND IP 66 RATING

RELEASE NO: PR-11560

CHARACTERISTICS OPERATING FORCE----- 12-26 OZ RELEASE FORCE----- 4 OZ MIN PRETRAVEL ----- .188 MAX DIFFERENTIAL TRAVEL----- .015 MAX OVERTRAVEL----- .219 MIN SWITCH-BASIC REPLACEMENT----- BZ-7RN702T	ELECTRICAL DATA CONTACT ARRANGEMENT S P D T 15A-125, 250 OR 480 VAC, 2A-600 VAC -L74- 1/8 HP - 125 VAC; 1/4 HP - 250 VAC 1/2A - 125 VDC; 1/4A-250 VDC CE 1.5A, 240VAC	DESIGN UNITS: INCH TOLERANCES UNLESS NOTED: NO PLACES x ± .030 ONE PLACE .x ± .015 TWO PLACE .xx ± .005 THREE PLACE .xxx ± 0° ANGLES x ± THIRD ANGLE PROJECTION	DRAWN JAP 29SEP82 CHECK DJW 4OCT82	Honeywell TITLE SWITCH - ENCLOSED SIZE TYPE CAGE CODE DRAWING NAME REV B I . BZV6-7RN2T 10 SCALE NONE WEIGHT .76 LB SHEET 1 OF 1				
			THIS DRAWING COVERS A PROPRIETARY ITEM AND IS THE PROPERTY OF HONEYWELL. THIS DRAWING IS NOT TO BE COPIED OR USED WITHOUT THE PERMISSION OF HONEYWELL. INTERPRET PER ANSI Y14.5M-1982 OTHER HONEYWELL ENGINEERING STANDARDS MAY APPLY RASTER					