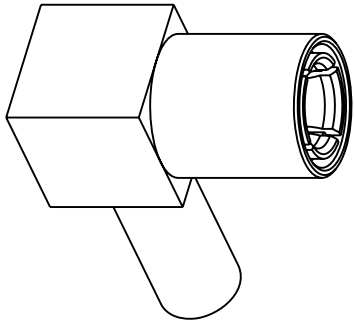


- NOTES:
- 1. MATERIALS AND FINISHES:
 - BODY - BRASS, GOLD PLATING
 - CONTACT PIN - BERYLLIUM COPPER, GOLD PLATING
 - INSULATOR - PTFE, NATURAL
 - 2. ELECTRICAL:
 - A. IMPEDANCE: 50 OHM
 - B. DIELECTRIC WITHSTANDING VOLTAGE: 1000 VRMS, MIN.
 - 3. MECHANICAL:
 - A. DURABILITY: 500 CYCLES MIN.
 - B. TEMPERATURE RANGE: -65° C TO +165° C
 - 4. CRIMPED FERRULE
 - HEX CRIMP SIZE .128"
 - 5. CONTACT PIN TO SOLDER
 - 6. PACKAGING:
 - A. PACKAGE CONNECTOR AS PER ROUTING INSTRUCTIONS.
 - B. MARK BAG OR TAG "903-289P-51A AND DATE CODE"

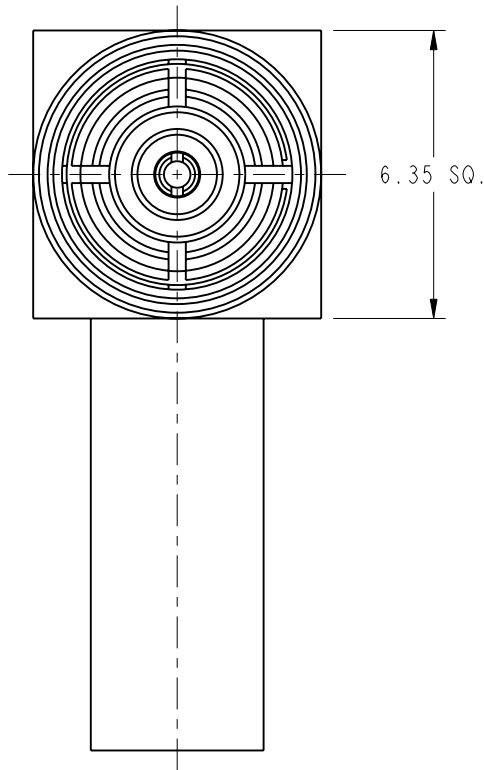
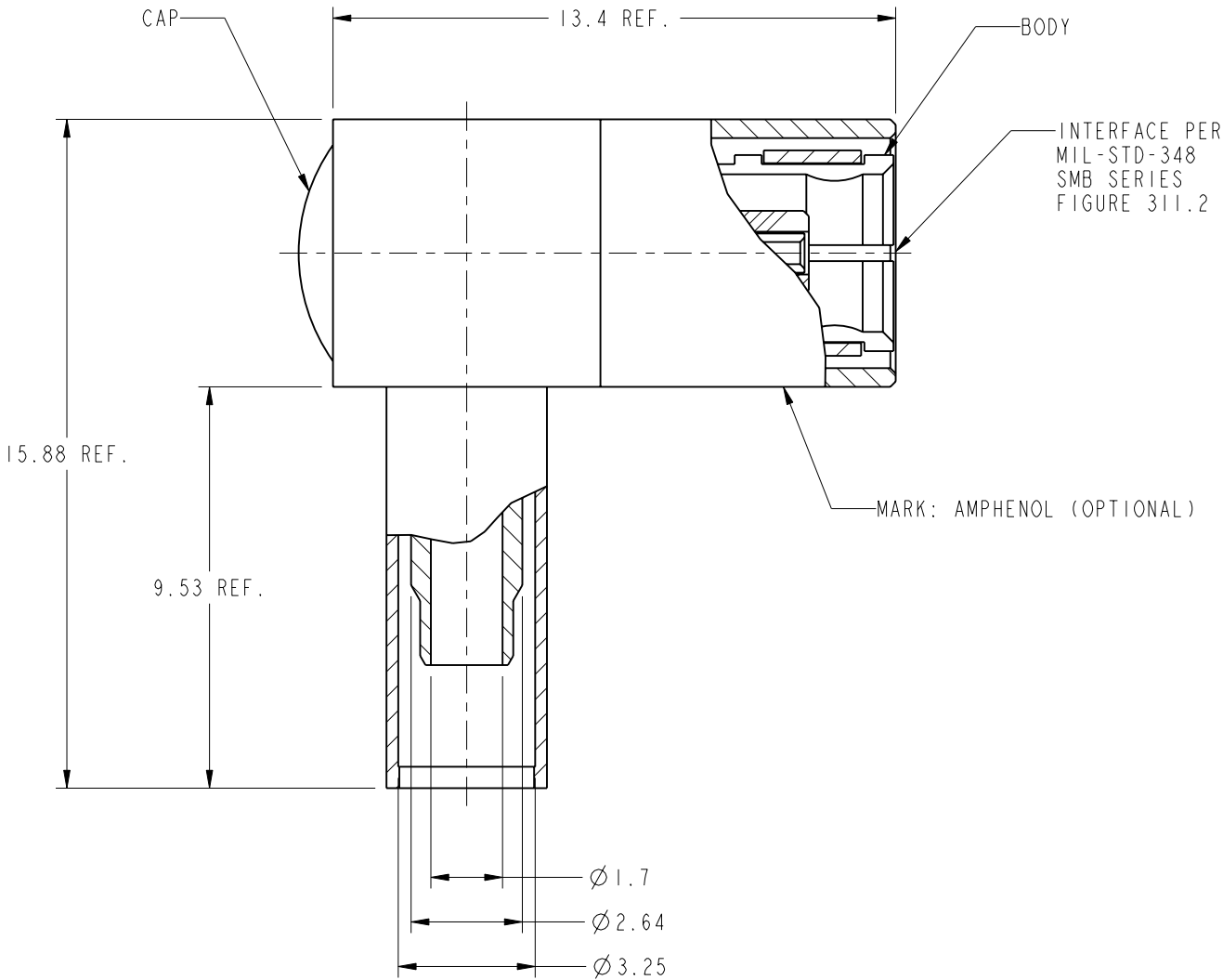
THIRD ANGLE PROJ.



SCALE 3.000

REVISIONS

REV	DESCRIPTION	DATE	ECO	APPR
A	RELEASE TO MFG.	6/20/84	30168	MM/SP
H	SEE SHEET I	3/22/95	40549	PB
J	SEE SHEET I	2/12/04	44801	CPM/KC
K	SEE SHEET I	28-Nov-07	44820	SH
L	INSULATOR WAS CHANGED\RD-DM08060401SI	13-Jun-08	--	SH
M	CAP WAS CHANGED, BODY WAS CHANGED\RD-DM11030101TI	15-Mar-11	48113	SH



CUSTOMER OUTLINE DRAWING
ALL OTHER SHEETS ARE FOR INTERNAL USE ONLY

<p>UNLESS OTHERWISE SPECIFIED, DIMENSIONS ARE IN METRIC AND TOLERANCES ARE: <0.5mm ± 0.05mm 0.5 - 6mm ± 0.1mm 6 - 30mm ± 0.2mm 30 - 120mm ± 0.3mm ANGLES ± 1°</p> <p>NOTICE - These drawings, specifications, or other data (1) are, and remain the property of Amphenol corp. (2) must be returned upon request; and (3) are confidential and not to be disclosed to any person other than those to whom they are given by Amphenol Corp. the furnishing of these drawings, specifications, or other data by Amphenol Corp., or to any other person to anyone for any purpose is not to be regarded by implication or otherwise in any manner licensing, granting rights to permitting such holder or any other person to manufacture, use or sell any product, process or design, patented or otherwise, that may in any way be related to or disclosed by said drawings, specifications, or other data.</p>	MATERIAL -	DRAWN T.DENG	DATE 10-Mar-11	TITLE SMB RIGHT ANGLE PLUG FOR RG-316/U		Amphenol RF Danbury CT USA, Tainan, Taiwan, Shenzhen, China www.amphenolrf.com	
	-	ENGINEER K. CAPOZZI	DATE 08-Mar-02				
	REFERENCE	APPROVED S.HSIEH	DATE 15-Mar-11	SCALE: 6.0:1.0 SHEET 2 OF 2		DRAWING NO. 903-289P-51A	
	CONFIGURATION LEVEL:	CAD FILE		DWG SIZE B		ITEM NO. 903-289P-51A	
	FINISH	Root Folder/SMB/903-289P-51A		REV M		PART NO. 903-289P-51A	