

NOTES:

1. MATERIALS AND FINISHES:  
BODY: BRASS, GOLD PLATING

THIRD ANGLE PROJ.

REVISIONS

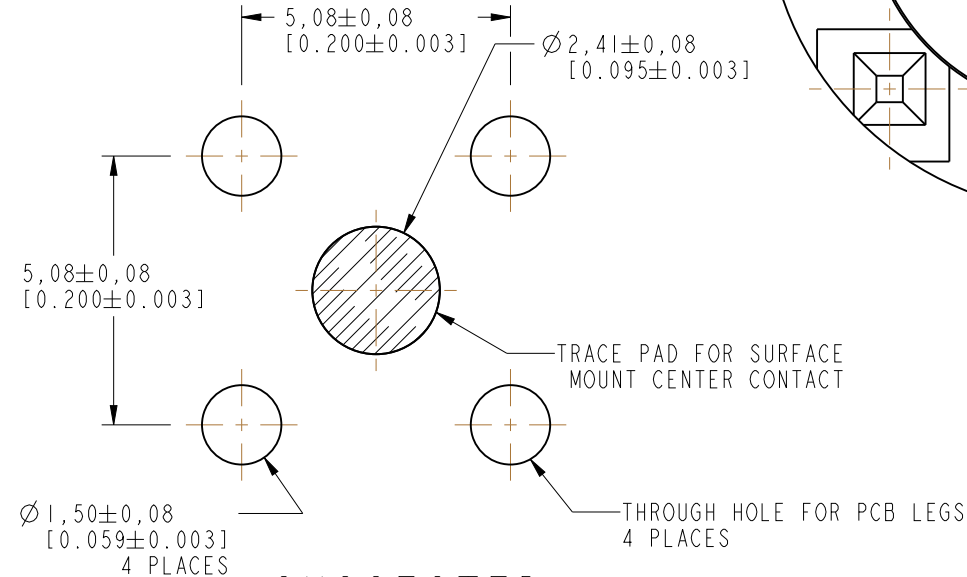
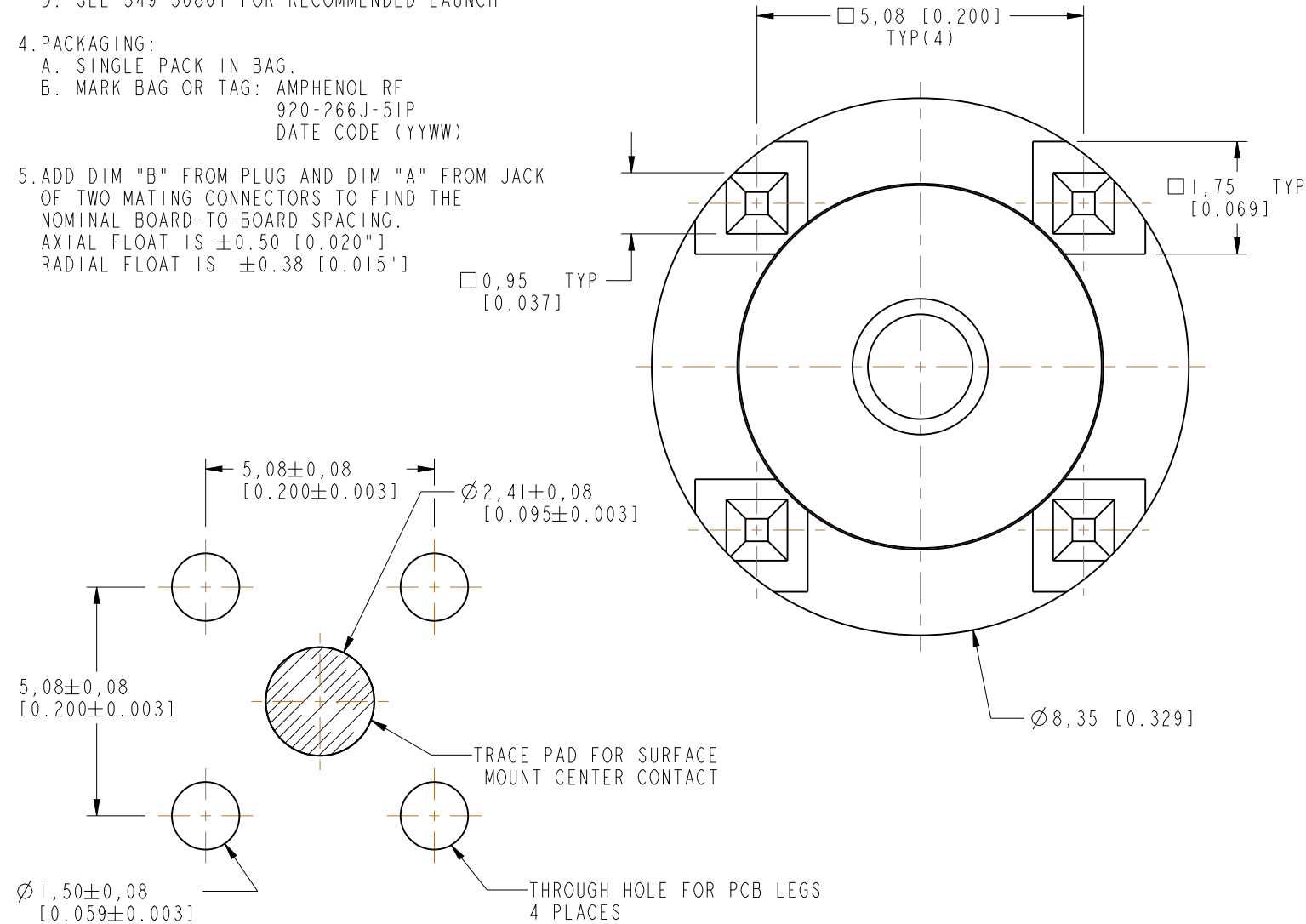
REV	DESCRIPTION	DATE	ECO	APPR
A	RELEASE TO MFG.	--	49535	CL

2. PHYSICAL:
- A. OPERATING TEMPERATURE: -65°C to +165°C
  - B. DURABILITY: 100 MATING CYCLES MINIMUM
  - C. INTERFACE: PROPRIETARY AFI INTERFACE

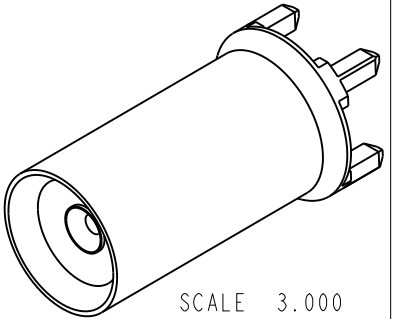
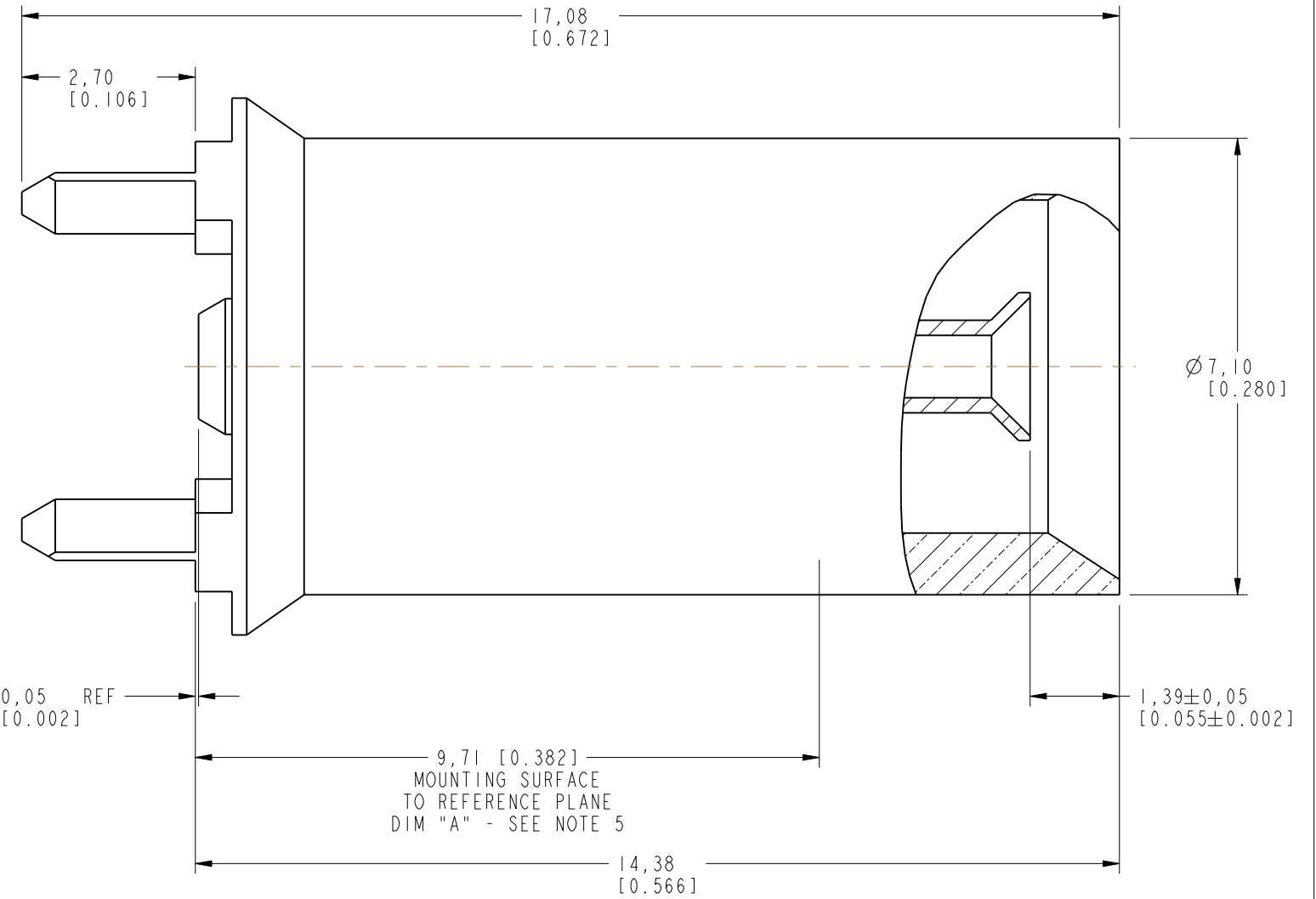
3. ELECTRICAL:
- A. IMPEDANCE: 50 OHMS, NOMINAL
  - B. FREQUENCY RANGE: 0 TO 6 GHz
  - C. VSWR: 1.10 + 0.06 x F (GHz) MAX, FROM 0 TO 3 GHz  
0.56 + 0.24 x F (GHz) MAX, FROM 3 TO 6 GHz
  - D. SEE 349-50861 FOR RECOMMENDED LAUNCH

4. PACKAGING:
- A. SINGLE PACK IN BAG.
  - B. MARK BAG OR TAG: AMPHENOL RF  
920-266J-51P  
DATE CODE (YYWW)

5. ADD DIM "B" FROM PLUG AND DIM "A" FROM JACK  
OF TWO MATING CONNECTORS TO FIND THE  
NOMINAL BOARD-TO-BOARD SPACING.  
AXIAL FLOAT IS ±0.50 [0.020"]  
RADIAL FLOAT IS ±0.38 [0.015"]



SUGGESTED  
PCB FOOTPRINT



## CUSTOMER OUTLINE DRAWING

ALL OTHER SHEETS ARE FOR INTERNAL USE ONLY

UNLESS OTHERWISE SPECIFIED, DIMENSIONS ARE IN METRIC AND TOLERANCES ARE: <0.5mm ± 0.05mm 0.5 - 6mm ± 0.1mm 6 - 30mm ± 0.2mm 30 - 120mm ± 0.3mm ANGLES ±1°	MATERIAL SEE NOTES	DRAWN ABHAYA KISHORE	DATE 07-Feb-13	TITLE AFI STR JACK PCB MOUNT		Amphenol RF www.amphenolrf.com	
		ENGINEER T. SMITH	DATE 07-Feb-13				
NOTICE - These drawings, specifications, or other data (1) are, and remain the property of Amphenol corp. (2) must be returned upon request; and (3) are confidential and not to be disclosed to any person other than those to whom they are given by Amphenol Corp. the furnishing of these drawings, specifications, or other data by Amphenol Corp., or to any other person to anyone for any purpose is not to be regarded by implication or otherwise in any manner licensing, granting rights to permitting such holder or any other person to manufacture, use or sell any product, process or design, patented or otherwise, that may in any way be related to or disclosed by said drawings, specifications, or other data.	REFERENCE EAR # 3289	APPROVED	DATE	SCALE: 10.0:1.0 SHEET 2 OF 2		DRAWING NO. 920-266J-51P	
	CONFIGURATION LEVEL: In Work	CAD FILE		DWG SIZE B		REV A	ITEM NO. 920-266J-51P
	FINISH						PART NO. 920-266J-51P