

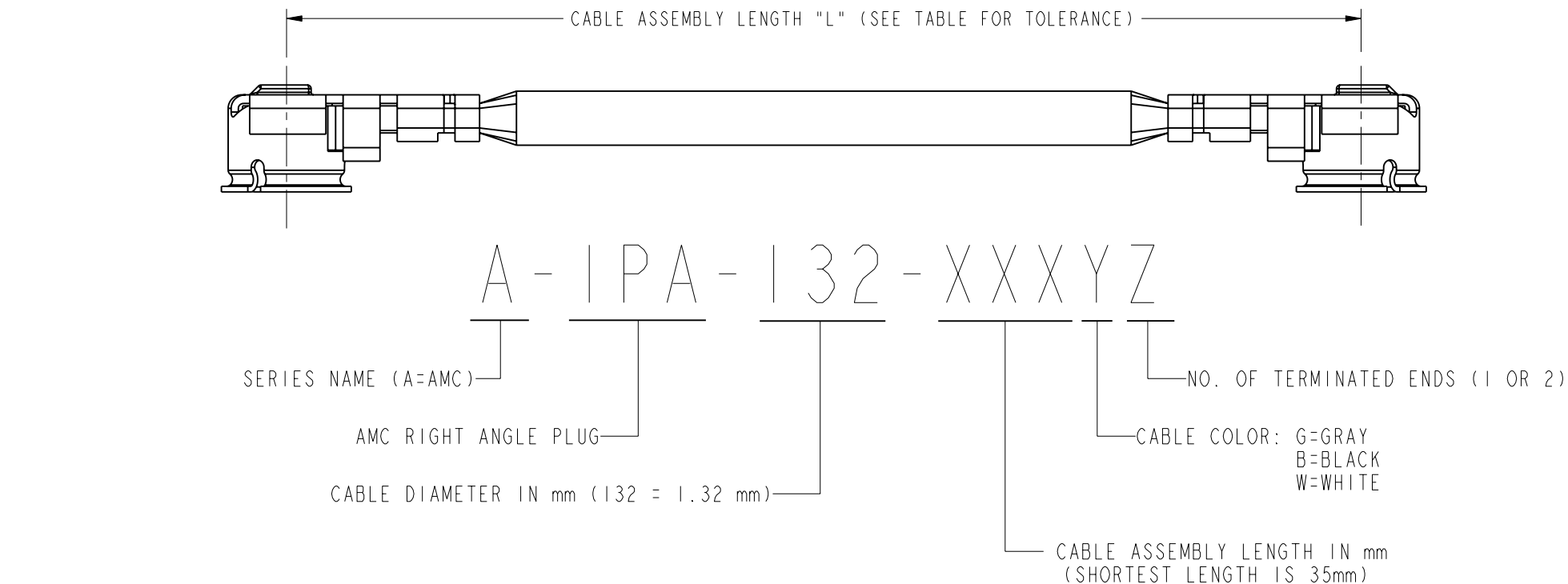
NOTES:

I. ELECTRICAL:

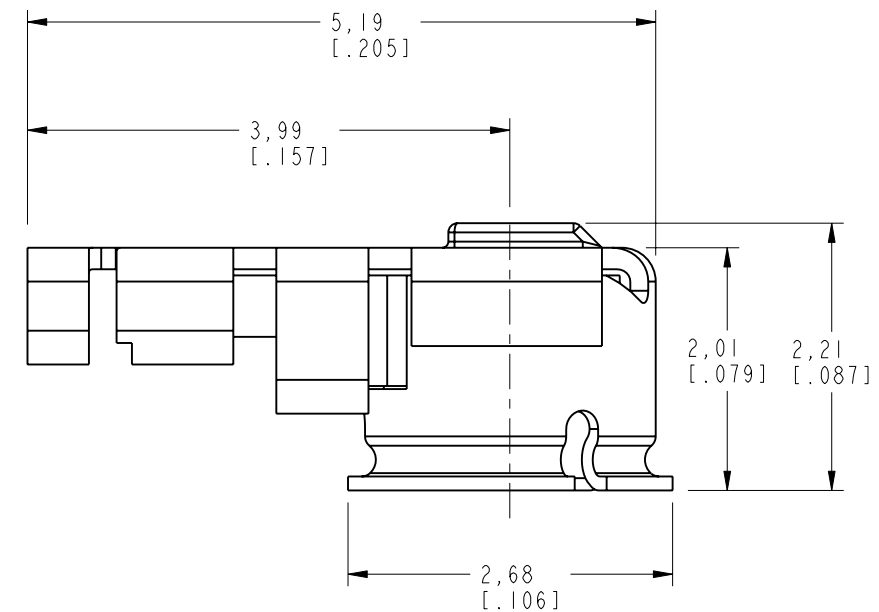
A. IMPEDANCE: 50Ω (NOMINAL)
B. FREQUENCY RANGE: 0-6 GHz
C. CONTACT RESISTANCE: CENTER: $20m\Omega$ MAX.: MEASURED AT 10mA MAX. $25 m\Omega$ MAX AFTER CYCLING
OUTSIDE: $10m\Omega$ MAX. $15 m\Omega$ MAX AFTER CYCLING
D. INSULATION RESISTANCE: $500m\Omega$ MIN.: MEASURED AT 100 VDC.
E. WITHSTANDIN VOLTAGE: NO LINE OR INSULATION BREAKDOWN: 200 VAC FOR 1 MIN.
F. V.S.W.R. : 1.3 MAX. AT DC TO 3GHz, 1.4 MAX. AT 3 TO 6GHz

A. FEMALE CONTACT HOLDING FORCE: .15N MIN. : MEASURED WITH A Ø.475MM PIN GAUGE.
B. DURABILITY: 30 CYCLES
C. TEMPERATURE RANGE: -40°C TO +90°C.
D. AMC CONNECTOR MATING FORCE: 15N TYPICAL
E. AMC CONNECTOR DEMATING FORCE: 10N TYPICAL
F. AMC INTERFACE IS FULLY COMPATIBLE WITH "U.FL" SERIES PRODUCT.

CONNECTOR BODY: PHOSPHOR BRONZE, SILVER PLATED (0.08u MIN.) OVER COPPER (1-2u)
CONNECTOR CENTER CONTACT: PHOSPHOR BRONZE, GOLD PLATED (0.2u MIN.) OVER NICKEL (2-3u)
CONNECTOR INSULATOR: PBT
CABLE JACKET: FEP
CABLE DIELECTRIC: FEP
CABLE CENTER CONDUCTOR: 32AWG ANNEALED COPPER WIRE STRANDED, SILVER PLATED
CABLE OUTER CONDUCTOR: ANNEALED COPPER WIRE BRAID, SILVER PLATED



| CABLE ASSEMBLY OVERALL LENGTH TOLERANCE | |
|---|-------------------------|
| OVERALL LENGTH L (mm) | STANDARD TOLERANCE (mm) |
| 35<L<200 | ± 4 |
| 200 < L 500 | ± 8 |
| 500 < L 1000 | ± 12 |
| 1000 < L | ±1.5 % |



AMC RIGHT ANGLE PLUG

| | | | | | | | | | |
|---|-------------------------------|------------------------------------|------------------|--------------------------------------|--------------------------------|----------|--|--|--|
| UNLESS OTHERWISE SPECIFIED, DIMENSIONS ARE IN INCHES AND TOLERANCES ARE: 2 PLACE DECIMAL 3 PLACE DECIMAL ANGLES ±.015 (0,381 mm) ±.005 (0,127 mm) ± 1° NOTICE - These drawings, specifications, or other data (1) are, and remain the property of Amphenol Corp. (2) must be returned upon request; and (3) are confidential and not to be disclosed to any person other than those to whom they are given by Amphenol Corp. The furnishing of these drawings, specifications, or other data by Amphenol Corp., or to any other person to anyone for any purpose is not to be regarded by implication or otherwise in any manner licensing, granting rights or permitting such holder or any other person to manufacture, use or sell any product, process or design, patented or otherwise, that may in any way be related to or disclosed by said drawings, specifications, or other data. | MATERIAL | DRAWN C. McGRATH | DATE 2/11/05 | TITLE RIGHT ANGLE PLUG JUMPER | | | Amphenol RF Danbury, CT, USA Tainan, Taiwan Shenzhen, China www.amphenolrf.com | | |
| | REFERENCE GEN# CASSY68 | ENGINEER O. BARTHELMES | DATE 2/11/05 | | | | | | |
| | | APPROVED O. BARTHELMES | DATE 2/16/05 | | | | | | |
| | | CAD FILE I:\AMC\A-IPA-132-XXXYZ | CODE ID 74868 | DWG SIZE B | DRAWING NO. A-IPA-132-XXXYZ | REV A | | | |
| | | SCALE: 8.0:1 SHEET 1 OF 1 | | | | | | | |