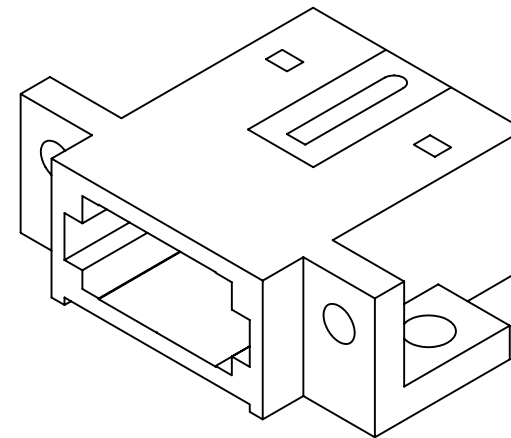
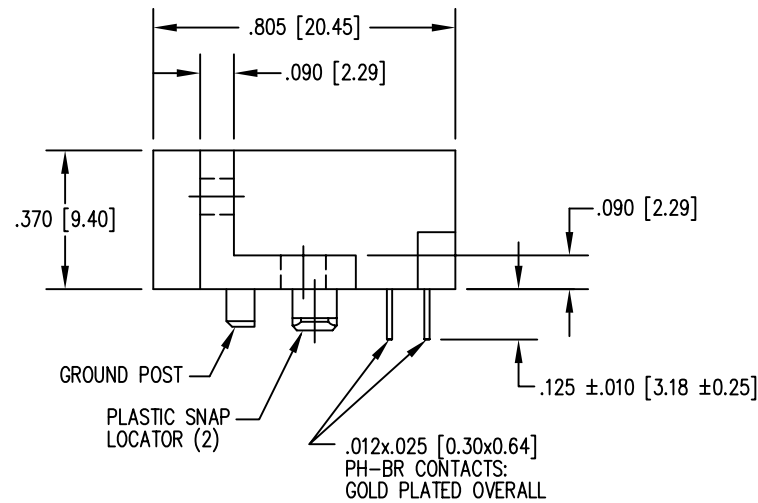
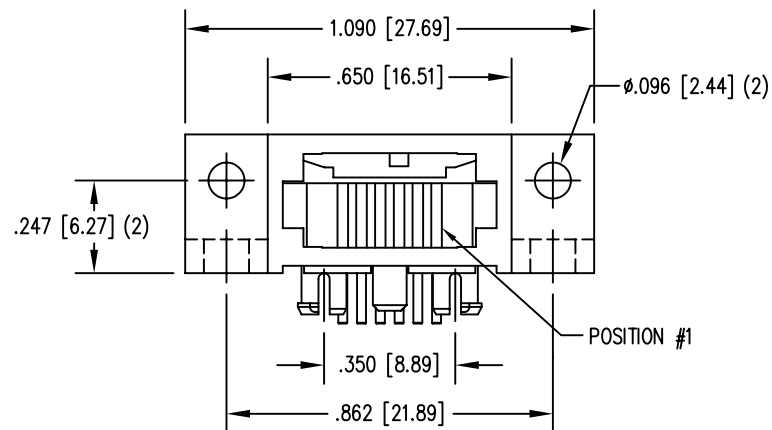
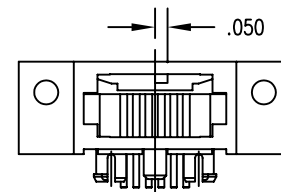


B



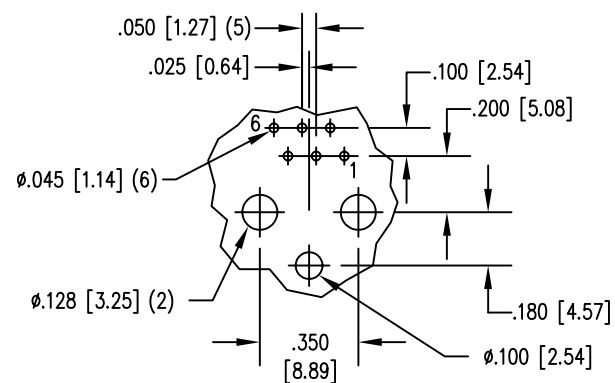
NOTES:

- CONNECTOR MATERIALS:
HOUSING: THERMOPLASTIC UL94 V-0
SHIELD: DIE CAST ALLOY
CONTACTS: COPPER ALLOY
SHIELD PLATING: TIN
CONTACT PLATING: SELECTIVE GOLD IN CONTACT AREA
SEE CHART FOR PART NUMBER
- FOR PRODUCT SPECIFICATIONS SEE PR026-01.
- TOLERANCES ARE ±006 [0.15] UNLESS OTHERWISE NOTED .

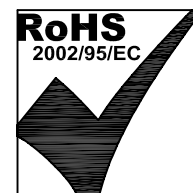
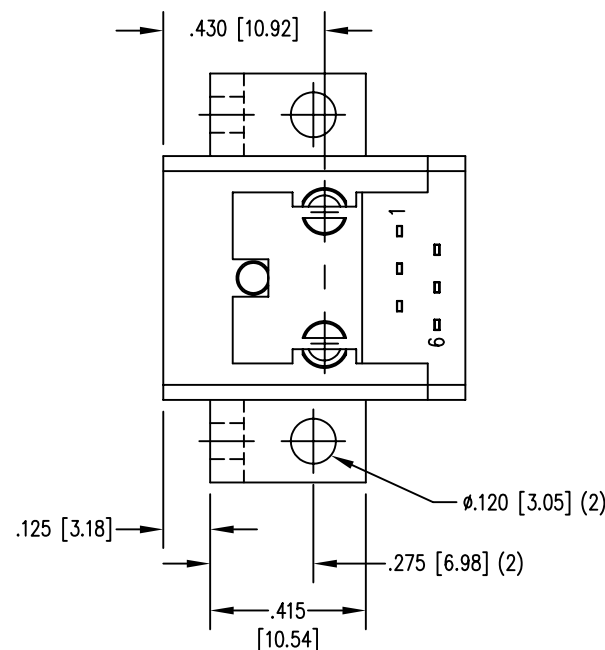


DIMENSIONS FOR KEY-5

A



PC BOARD TOP VIEW



THIRD ANGLE PROJECTION	
DO NOT SCALE DRAWING DRAWING IS SUBJECT TO CHANGE WITHOUT NOTICE	
DIMENSIONS: INCHES [METRIC]	
UNLESS OTHERWISE SPECIFIED TOLERANCES ARE ±.005 [0.13] ANGLES ARE ± 1°	
SHEET NO. 1 OF 1	

50 MICRO-INCHES [1.27um]	SS-610606-LF-P-5-A58
30 MICRO-INCHES [0.76um]	SS-610606-LF-P-5-4/6
CONTACT PLATING IN MATING AREA	PART NUMBER

Bel Stewart Connector			
11118 Susquehanna Trail South Glen Rock, PA 17327-9199 (717) 235-7512 Fax: (717) 235-7954 http://www.stewartconnector.com			
TITLE: 6 CONTACT COMPU-SHIELD JACK #4-40 TAP ON Ø.096 HOLES AND #6-32 TAP ON Ø.120 HOLES			
THIS DRAWING AND THE SUBJECT MATTER SHOWN THEREON ARE CONFIDENTIAL AND THE PROPRIETARY PROPERTY OF BEL STEWART CONNECTOR AND SHALL NOT BE REPRODUCED, COPIED, OR USED IN ANY MANNER WITHOUT PRIOR WRITTEN CONSENT OF BEL STEWART CONNECTOR. THE SUBJECT MATTER MAY BE PATENTED OR A PATENT MAY BE PENDING.		DRN BY: BK DATE: 2-14-95	DATE: 2-14-95
		APPD BY: JW DATE: 2-14-95	DATE: 2-14-95
		DWG NO. CT610013	REV. A6

B

A